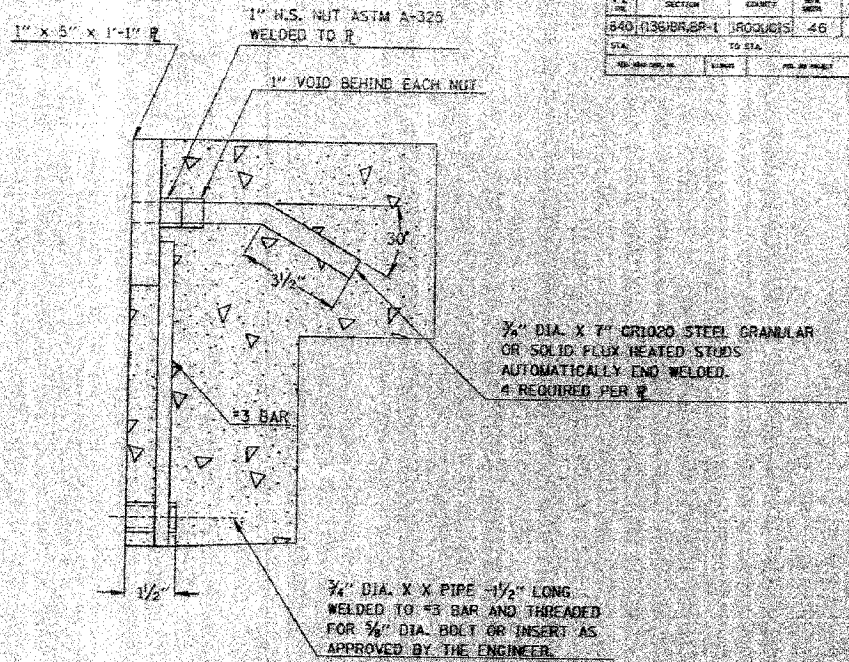
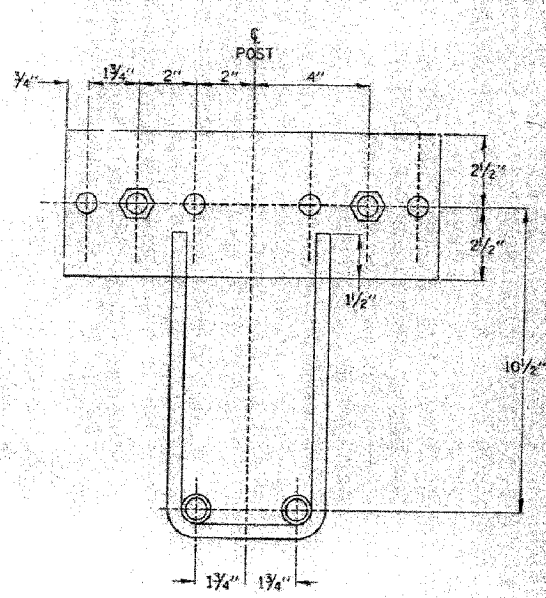
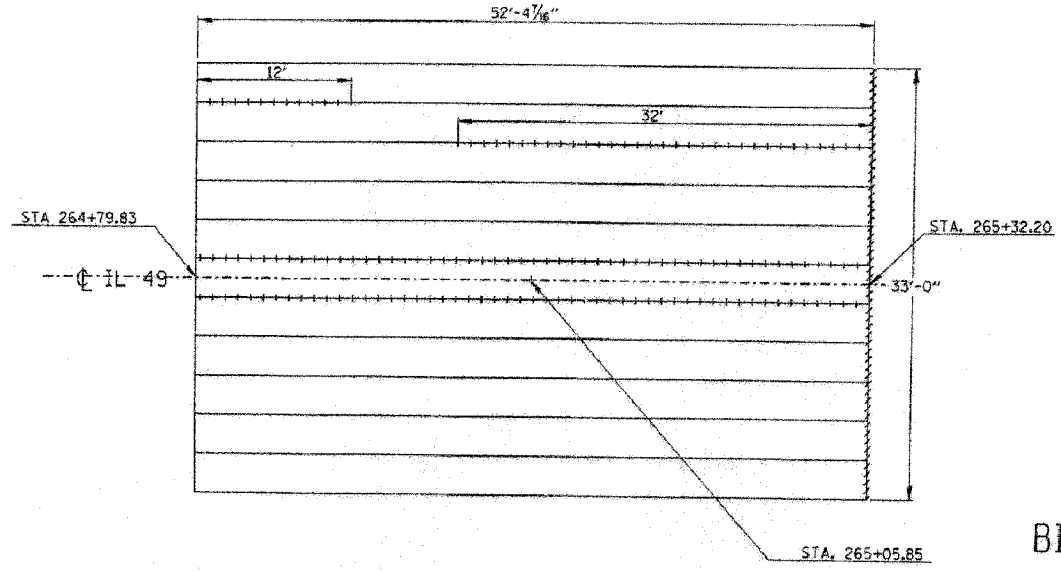
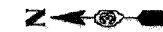


F.A.S. RTE.	SECTION	COUNTY	TOTAL SHEETS	SHEET NO.
840	136 BR-1	IROQUOIS	45	34
STA.		TO STA.		
FED. ROAD DIST. NO.		ILLINOIS	FED. AID PROJECT	



LINE	SECTION	QUANTITY	UNIT	PRICE	TOTAL
1	840 (136 BR-1) IROQUOIS	46	EA		
TOTAL					



EXISTING GUARDRAIL ANCHOR DEVICE

NOTE: IT IS THE CONTRACTOR'S RESPONSIBILITY TO VERIFY THE DIMENSIONS OF THE EXISTING ANCHOR DEVICE, AND TO MAKE ANY NECESSARY ADJUSTMENTS TO PROPOSED GUARDRAIL DIMENSIONS, PRIOR TO ORDERING ANY GUARDRAIL MATERIAL.

ILLINOIS DEPARTMENT OF TRANSPORTATION
BILL OF MATERIALS
TOP OF DECK

ITEM	UNIT	QUANTITIES
KEYWAY REPAIR	FOOT	149.0
GROUT REPAIR	FOOT	33.0

REVISIONS	
NAME	DATE

ILLINOIS DEPARTMENT OF TRANSPORTATION
STRUCTURE REMEDIATION
FAP 840 (IL 49)
SECTION 136 BR
STRUCTURE NO. 840-003
IROQUOIS COUNTY
DRAWN BY: GJM
CHECKED BY: GJM

LEGEND

	KEYWAY REPAIR
	GROUT REPAIR

TOP OF DECK

FOR INFORMATION ONLY

PLOT DATE = 12/21/2005
FILE NAME = I:\03236\03236.W012.EPLN.dgn
PLOT SCALE = 1/8" = 1'-0"
REFERENCE = .REF-1
OPERATOR = michelle

ILLINOIS DEPARTMENT OF TRANSPORTATION
EXISTING BRIDGE PLANS
FAP RTE 840 (IL RTE 49)
SECTION 136 BR-1
IROQUOIS COUNTY

SCALE: VERT. / HORIZ. / DATE: 12/7/05

DRAWN BY: LANDREY
CHECKED BY: BOIT

COMPUTER FILE NO. 03236.W012.EPLN
PROJECT 03236 W012
12/7/05 - MML

GREENE & BRADFORD, INC.
OF SPRINGFIELD
CONSULTING ENGINEERS
INCORPORATED
1001 W. WASHINGTON ST., SUITE 100
SPRINGFIELD, ILLINOIS 62760
TEL: 217-223-8844 FAX: 217-223-8844
WWW.GREENE-AND-BRADFORD.COM