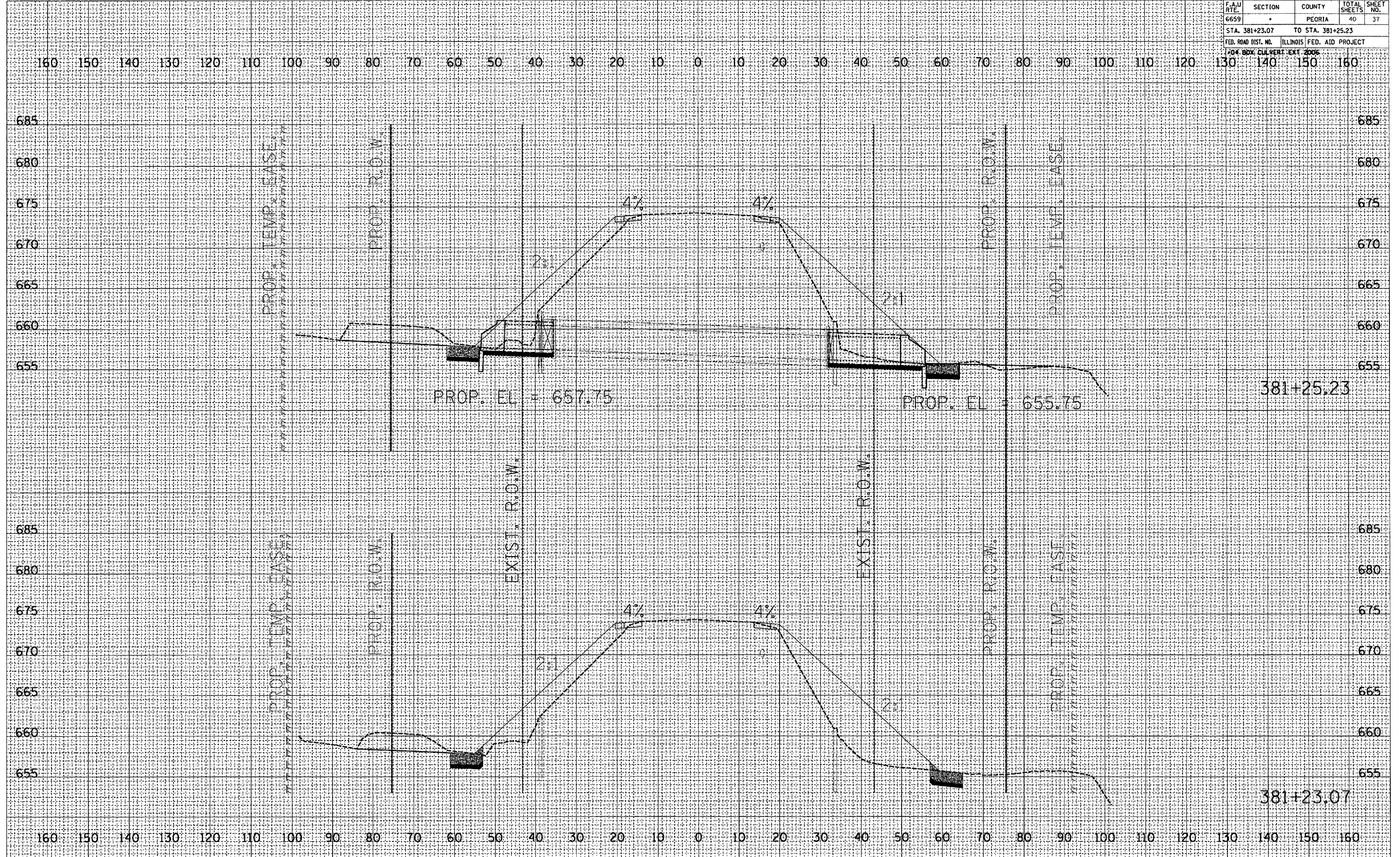


F.A.U. RTE.	SECTION	COUNTY	TOTAL SHEETS	SHEET NO.
6659	*	PEORIA	40	37
STA. 381+23.07 TO STA. 381+25.23				
FED. ROAD DIST. NO. ILLINOIS FED. AID PROJECT				
104 BOX CULVERT EXT 2006				

FINAL SURVEY	DATE
NO.	

ORIGINAL SURVEY	DATE
NO.	

PLOT DATE = 12/19/2006
 FILE NAME = c:\projects\1\form\sheet\sheet.dwg
 PLOT SCALE = 2:6322 / IN.
 REFERENCE = 8898



PARALLEL TO CULVERT