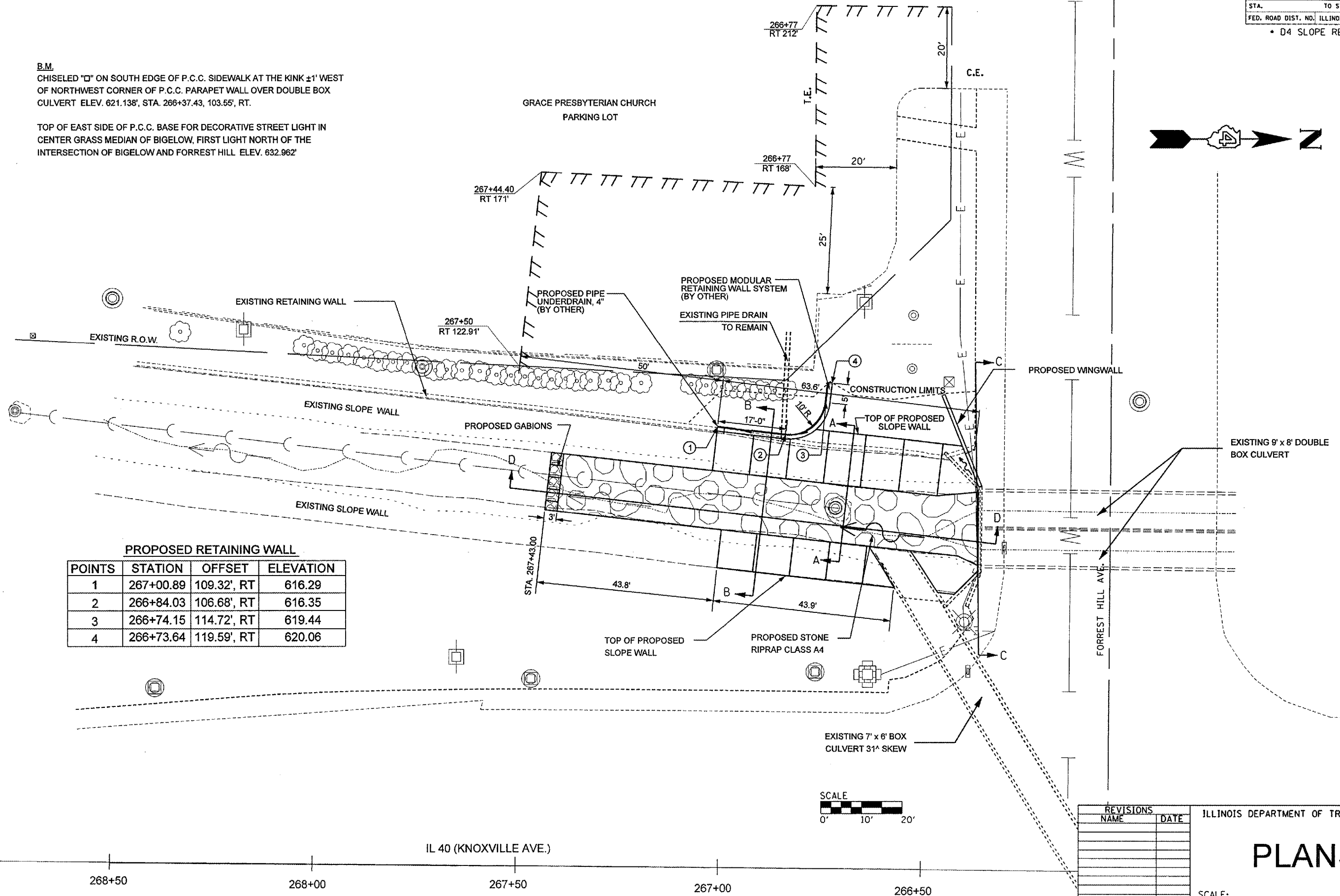


F.A.P. RTE.	SECTION	COUNTY	TOTAL SHEETS	SHEET NO.
646	*	PEORIA	30	8
STA.	TO STA.			
FED. ROAD DIST. NO.	ILLINOIS	FED. AID PROJECT		
* D4 SLOPE REPAIR 2006				

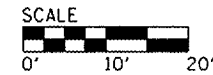
B.M.
CHISELED "D" ON SOUTH EDGE OF P.C.C. SIDEWALK AT THE KINK ±1' WEST OF NORTHWEST CORNER OF P.C.C. PARAPET WALL OVER DOUBLE BOX CULVERT ELEV. 621.138', STA. 266+37.43, 103.55', RT.

TOP OF EAST SIDE OF P.C.C. BASE FOR DECORATIVE STREET LIGHT IN CENTER GRASS MEDIAN OF BIGELOW, FIRST LIGHT NORTH OF THE INTERSECTION OF BIGELOW AND FORREST HILL ELEV. 632.962'



PROPOSED RETAINING WALL

POINTS	STATION	OFFSET	ELEVATION
1	267+00.89	109.32', RT	616.29
2	266+84.03	106.68', RT	616.35
3	266+74.15	114.72', RT	619.44
4	266+73.64	119.59', RT	620.06



REVISIONS	
NAME	DATE

ILLINOIS DEPARTMENT OF TRANSPORTATION
PLANS
SCALE: _____ DATE _____
DRAWN BY _____ CHECKED BY _____

PLOT DATE = 12/1/2005
 FILE NAME = c:\projects\1140fhil\plansheet3.dgn
 PLOT SCALE = 23.2941" = 1'
 USER NAME = crespole

268+50 268+00 267+50 267+00 266+50