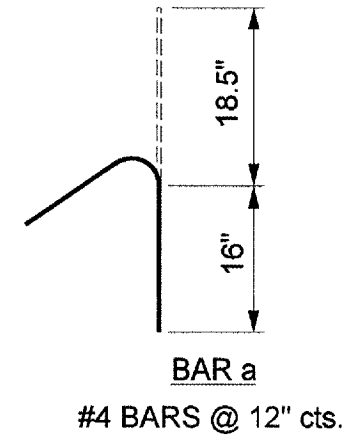


**SECTION B-B**  
**FROM STA. 266+84.13 TO STA. 267+00.89**

**NOTES:**

PIPE UNDERDRAIN 4" (SPECIAL) TO BE OUTLET THROUGH BLOCK RETAINING WALL AT DOWNSTREAM END OF PROJECT, STA 267+00

CUTOFF WALL AND ITS REINFORCEMENT WILL BE INCLUDED IN THE UNIT PRICE OF SLOPE WALL, 6 INCH.



REVISIONS	
NAME	DATE

ILLINOIS DEPARTMENT OF TRANSPORTATION  
**SLOPE WALL  
 DETAIL**