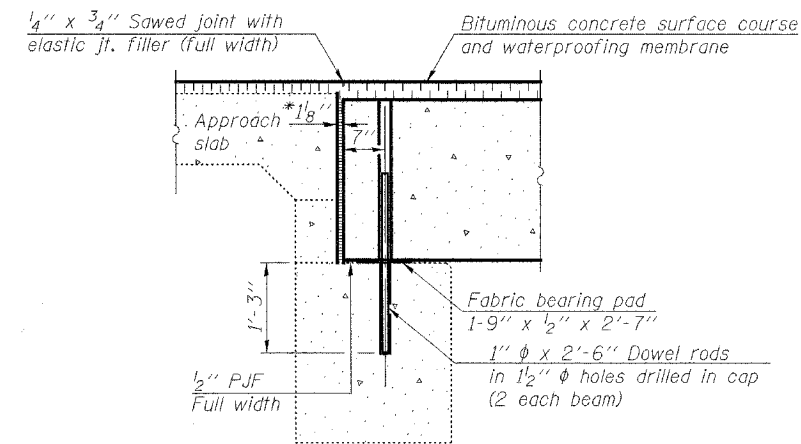


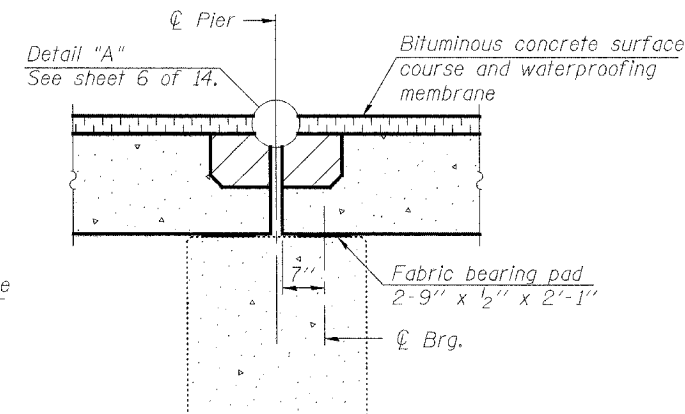
Note:  
Rail spacing the same on both sides of the bridge.

**HALF PLAN**

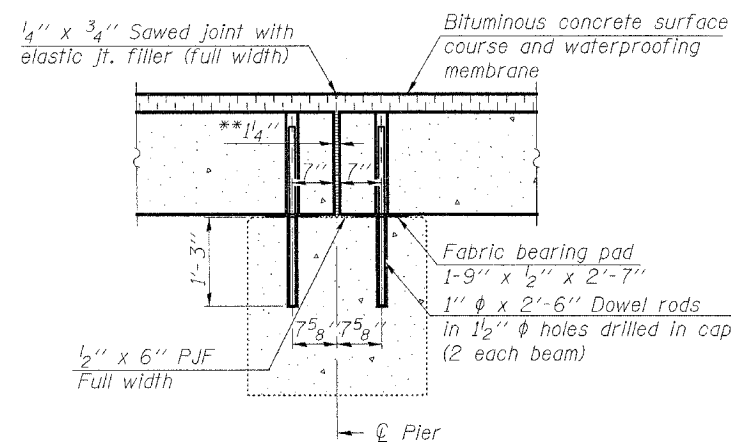


**SECTION THRU ABUTMENT**

\*1/8" Jt. shall be filled with non-shrink grout. 1/8" dimension may vary to accommodate tolerance in beam lengths.

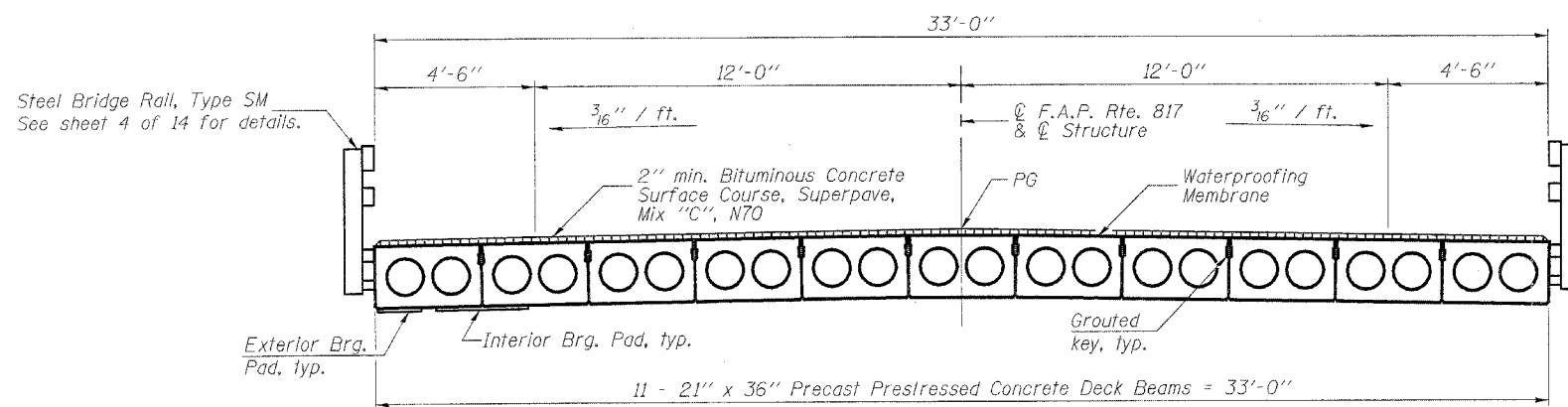


**SECTION THRU EXPANSION PIER**



**SECTION THRU FIXED PIER**

\*\*1/4" Jt. shall be filled with non-shrink grout. 1/4" dimension may vary to accommodate tolerance in beam lengths.



**CROSS SECTION**

**BILL OF MATERIAL**

Bar	No.	Size	Length	Shape	
a(E)	12	#5	14'-9"	—	
a1(E)	12	#5	17'-9"	—	
Reinforcement Bars, Epoxy Coated				Pound	410

**Notes:**

After beams have been erected, holes shall be drilled into substructure and anchor dowels placed. Dowel holes shall be filled with non-shrink grout to top of beam and allowed to cure min. 24 hrs. prior to grouting the shear keys.

All horizontal dimensions are at right angles to beam ends.

Hatched area to be poured after beams are in place.

See sheets 7 & 8 of 14 for bearing pad details.

See "End of Beam (Exp. End)" detail on sheets 7 & 8 of 14 for placement of a(E) and a1(E) bars.

See sheet 14 of 14 for Bar Splicer Detail.

DESIGNED	EML
CHECKED	NJM
DRAWN	EML
CHECKED	NJM

**HORNER & SHIFRIN, INC.**  
ENGINEERS ■ ARCHITECTS ■ PLANNERS

**SUPERSTRUCTURE DETAILS**  
**F.A.P. ROUTE 817 - SECTION 106BR-1**  
**WASHINGTON COUNTY**  
**STATION 690+00.00**  
**STRUCTURE NO. 095-0028**