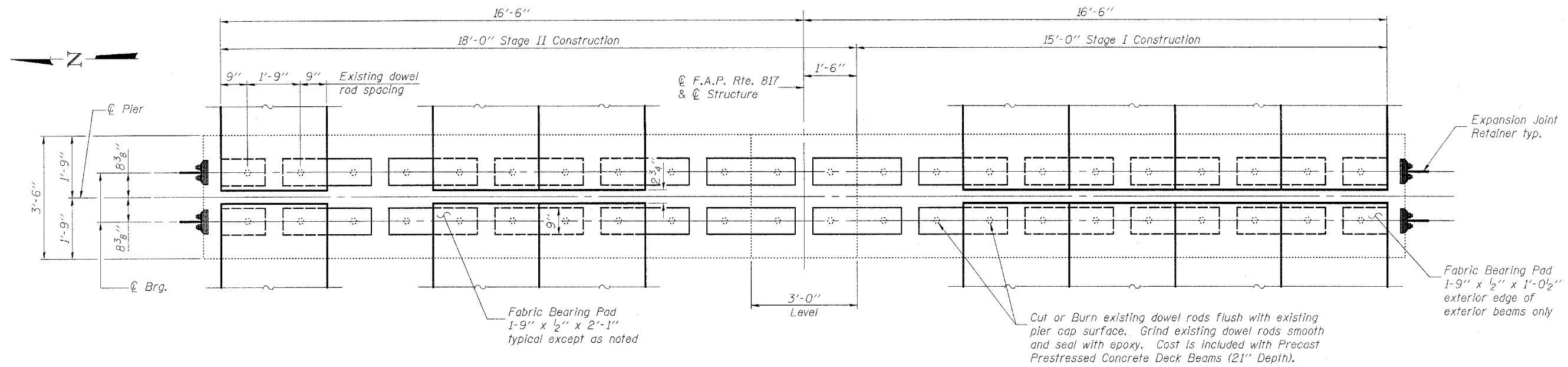


STATE OF ILLINOIS
DEPARTMENT OF TRANSPORTATION

ROUTE NO.	SECTION	COUNTY	TOTAL SHEETS	SHEET NO.
F.A.P. 817	106BR-1	WASHINGTON	21	2
FED. ROAD DIST. NO. 7	ILLINOIS	FED. AID PROJECT		

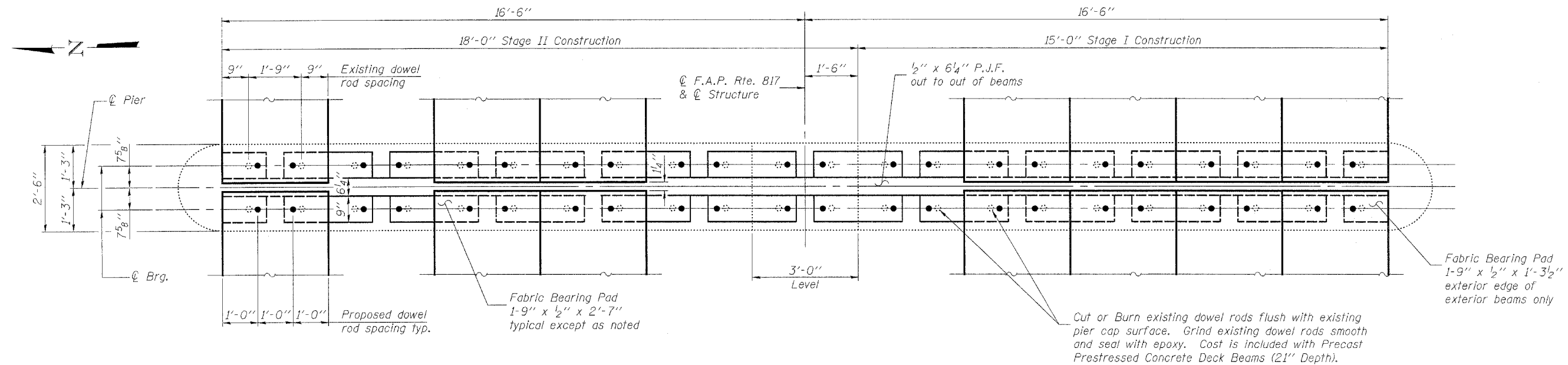
SHEET NO. 12
14 SHEETS

Notes:
See sheet 6 of 14 for details of Expansion Joint Retainer located at Piers 1 & 3.
See sheet 13 of 14 for Formed Concrete Repair details.



PLAN - PIERS 1 & 3

(Not all deck beams are shown)
(Bituminous concrete surface course and expansion joint not shown)



PLAN - PIER 2

(Not all deck beams are shown)
(Bituminous concrete surface course not shown)

DESIGNED	EML
CHECKED	NJM
DRAWN	EML
CHECKED	NJM

HORNER & SHIFRIN, INC.
ENGINEERS ■ ARCHITECTS ■ PLANNERS

PIERS
F.A.P. ROUTE 817 - SECTION 106BR-1
WASHINGTON COUNTY
STATION 690+00.00
STRUCTURE NO. 095-0028