

STATE OF ILLINOIS  
DEPARTMENT OF TRANSPORTATION  
DIVISION OF HIGHWAYS  
**PLANS FOR PROPOSED**  
**LOCAL AGENCY PAVEMENT PRESERVATION PROJECT**  
**FAU 1375 (LIES ROAD) RESURFACING**  
SECTION: 04-00047-00-RS  
**GARY AVENUE TO SCHMALE ROAD (FAP 2561 TO FAU 2566)**  
PROJECT NO.: M-8003 (552)  
**VILLAGE OF CAROL STREAM**  
**DUPAGE COUNTY**  
JOB NO.: C-91-113-06



LOCATION OF INDICATED SECTION THUS: →



*William M. Chelambak* 1215105  
PROJECT MANAGER  
LICENSE EXPIRES 11-30-07

INDEX OF SHEETS

SHEET NO.	TITLE
1	COVER SHEET
2	SUMMARY & SCHEDULE OF QUANTITIES, LEGEND, DETAILS AND GENERAL NOTES
3	INLET DETAIL, TYPICAL CROSS SECTION, MIXTURE REQUIREMENTS
4	LIES ROAD - STA 100+00 TO STA 123+85
5	LIES ROAD - STA 123+85 TO STA 153+60
6	LIES ROAD STRIPING PLAN
7	IDOT TYPICAL PAVEMENT MARKINGS
8	IDOT TRAFFIC CONTROL AND PROTECTION AT TURN BAYS AND OTHER PROTECTION STANDARDS
9	IDOT BUTT JOINT AND BITUMINOUS TAPER DETAILS
10	IDOT PAVEMENT MARKING LETTERS & SYMBOLS FOR TRAFFIC STAGING

STANDARD NO.

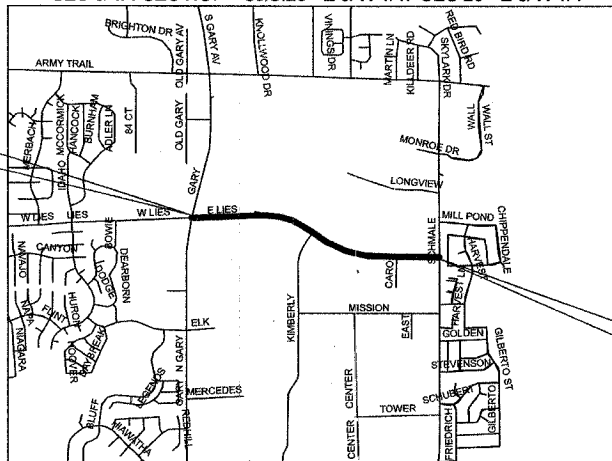
000001-04	STANDARD SYMBOLS, ABBREVIATIONS AND PATTERNS
442201-01	CLASS C AND D PATCHES
606001-02	CONCRETE CURB TYPE B AND COMBINATION CONCRETE CURB AND GUTTER
701301-02	LANE CLOSURE, 2L, 2W, SHORT TIME OPERATIONS
701606-04	URBAN LANE CLOSURE MULTILANE, 2W WITH MOUNTABLE MEDIAN
701701-04	URBAN LANE CLOSURE, MULTILANE INTERSECTION
780001-01	TYPICAL PAVEMENT MARKINGS
886001	DETECTOR LOOP INSTALLATIONS

PROJECT LOCATION  
LIES ROAD  
BEGIN RESURFACING: STA. 100+42

DESIGN DESIGNATION  
LIES ROAD  
LOCAL COLLECTOR

TRAFFIC DATA  
LIES ROAD  
POSTED OR DESIGN SPEED = 35 MPH  
2005 ADT = 12,500

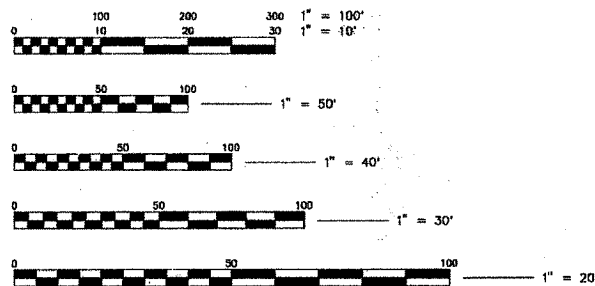
CITY & TOWNSHIP = CAROL STREAM - BLOOMINGDALE TOWNSHIP  
SEC & 1/4 SEC NO. = SEC. 28 - E & W 1/4. SEC 29 - E & W 1/4



LOCATION MAP

GROSS LENGTH OF PROJECT = 5318 LIN. FT. OR 1.01 MILES

NET LENGTH OF PROJECT = 5417 LIN. FT. OR 1.03 MILES



FULL SIZE PLANS HAVE BEEN PREPARED USING STANDARD ENGINEERING SCALES. REDUCED SIZED PLANS WILL NOT CONFORM TO STANDARD SCALES. IN MAKING MEASUREMENTS ON REDUCED SIZE PLANS, THE ABOVE SCALES SHALL BE USED.

CALL JULIE 1-800-892-0123  
WITH THE FOLLOWING  
COUNTY = DUPAGE  
CITY & TOWNSHIP = CAROL STREAM - BLOOMINGDALE TOWNSHIP  
SEC & 1/4 SEC NO. = SEC. 28 - E & W 1/4. SEC 29 - E & W 1/4  
48 HOURS BEFORE YOU DIG  
EXCLUDING SAT., SUN., & HOLIDAYS



ENGINEERING SERVICES  
500 N. GARY AVENUE  
60188  
(630) 871 - 6220

STATE OF ILLINOIS  
DEPARTMENT OF TRANSPORTATION  
DIVISION OF HIGHWAYS

APPROVED December 5, 2005  
*William M. Chelambak*  
LOCAL AGENCY REPRESENTATIVE

APPROVED DECEMBER 21  
2005  
*[Signature]*  
LOCAL ROADS ENGINEER

APPROVED DEC 21  
2005  
*Brian M. O'Leary*  
DEPUTY DIRECTOR OF ENGINEERING, REGION ENGINEER

FEDERAL AID DESIGN ENGINEER - ABIGAIL BRINKS 847-705-4233

CONTRACT NO. 83832