

F.A.U. RTE.	SECTION	COUNTY	TOTAL SHEETS	SHEET NO.
3778/1609	04-00027-02-LS	COOK	6	1
ILLINOIS PROJECT: HPD-897 (005)				
CONTRACT NO. 83833				

STATE OF ILLINOIS  
DEPARTMENT OF TRANSPORTATION  
DIVISION OF HIGHWAYS

**PLANS FOR PROPOSED  
FEDERAL AID PROJECT**

**F.A.U. ROUTE 3778 CRAWFORD AVENUE AND  
F.A.U. ROUTE 1609 167th STREET FENCE INSTALLATION**

SECTION: 04-00027-02-LS

PROJECT NO.: HPD-897 (005)

PROJECT LIMITS: 169th STREET TO BRIARGATE DRIVE

COOK COUNTY

JOB NO.: C-91-003-05

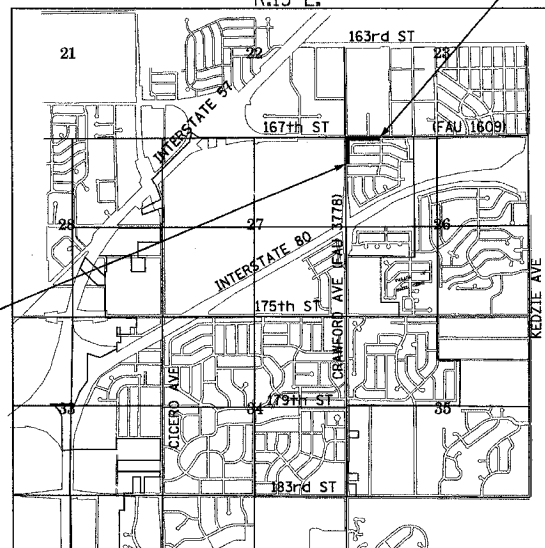
FOR INDEX OF SHEETS, SEE SHEET NO. 2

PROJECT IS LOCATED IN THE  
CITY OF COUNTRY CLUB HILLS

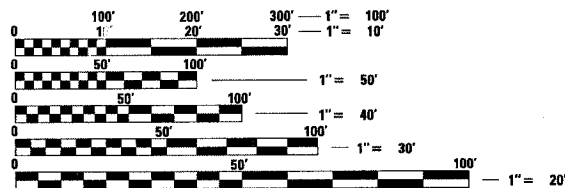
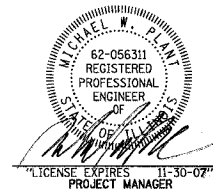
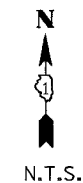


PROJECT: HPD-897 (005)  
LOCATION: F.A.U. 1609 167th STREET  
ENDS STA. 19+99

LOCATION MAP (NOT TO SCALE)  
R.13 E.



PROJECT: HPD-897 (005)  
LOCATION: F.A.U. 3778 CRAWFORD AVENUE  
BEGINS STA. 58+27



FULL SIZE PLANS HAVE BEEN PREPARED USING STANDARD ENGINEERING SCALES. REDUCED SIZED PLANS WILL NOT CONFORM TO STANDARD SCALES. IN MAKING MEASUREMENTS ON REDUCED PLANS, THE ABOVE SCALES MAY BE USED.

J.U.L.I.E.  
JOINT UTILITY LOCATION INFORMATION FOR EXCAVATION  
1-800-892-0123

GROSS LENGTH OF IMPROVEMENT = 1,773 LIN. FT. OR 0.336 MILES  
NET LENGTH OF IMPROVEMENTS = 1,773 LIN. FT. OR 0.336 MILES



Baxter & Woodman

TRAFFIC DATA

POSTED OR DESIGN SPEED = 45 MPH  
2030 ADT = 48,000

STATE OF ILLINOIS  
DEPARTMENT OF TRANSPORTATION  
DIVISION OF HIGHWAYS

APPROVED: *D. W. Wells* 11-29-2005  
LOCAL AGENCY REPRESENTATIVE

DECEMBER 21, 2005  
*[Signature]*  
LOCAL ROADS ENGINEER

Dec. 21, 2005  
*Diane M. O'Keefe*  
DEPUTY DIRECTOR OF HIGHWAYS, REGION ENGINEER

**PRINTED BY THE AUTHORITY  
OF THE STATE OF ILLINOIS**

CONTRACT NO. 83833

Burlington, Wisconsin  
262.763.7834

Crystal Lake, Illinois  
815.459.1260  
(OFFICE WHICH PREPARED PLANS)

DeKalb, Illinois  
815.787.3111

Mokena, Illinois  
708.560.7070

Grayslake, Illinois  
847.223.5088

Rockford, Illinois  
815.489.1551

PROJECT NO.: 041179

DATE: 9-30-05

I.D.O.T. FEDERAL AID DESIGN ENGINEER: ABIGAIL BRINKS (847) 705-4233 SCHALMURBURG, IL