

FAU RTE	SECTION	COUNTY	TOTAL SHEETS	SHEET NO.
1447	03-00159-00-RS	COOK	24	15
F. HW. A. REG.	ILLINOIS	PROJECT STPM-8003(581)		

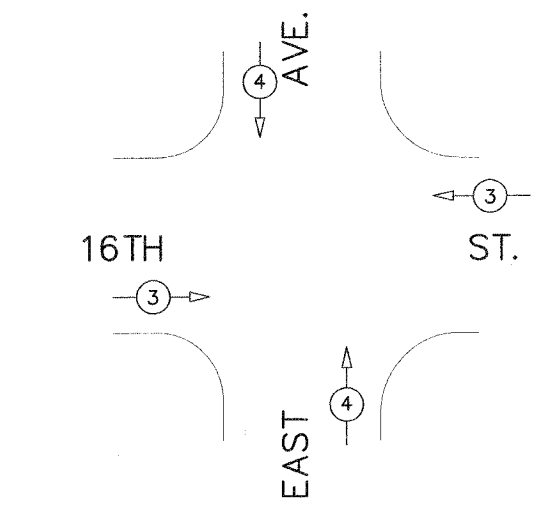
CONTRACT NO. 83835

**SCHEDULE OF QUANTITIES**

Description	Unit	QUANTITY
Light Detector	EACH	2
Light Detector Amplifier	EACH	1
Electric Cable in Conduit, No. 20, 3/C, Twisted, Shielded	FOOT	260

CABLE SLACK	(FT.)	VERTICAL	(FT.)
HANDHOLE	6.5	ALL FOUNDATIONS	3.5
DOUBLE HANDHOLE	13	MAST ARM (L) POLE	20'+L-2
SIGNAL POST	2	BRACKET MOUNTED	2
CONTROLLER CABINET	1	PED. PUSH BUTTON	1
FIBER OPTIC	13	ELECTRIC SERVICE	13
ELECTRIC SERVICE	1	SERVICE TO GROUND	1
GROUND CABLE	1	POST MOUNTED	1

ALL EVDS EQUIPMENT SHALL BE MANUFACTURED BY OPTICOM



NOT TO SCALE

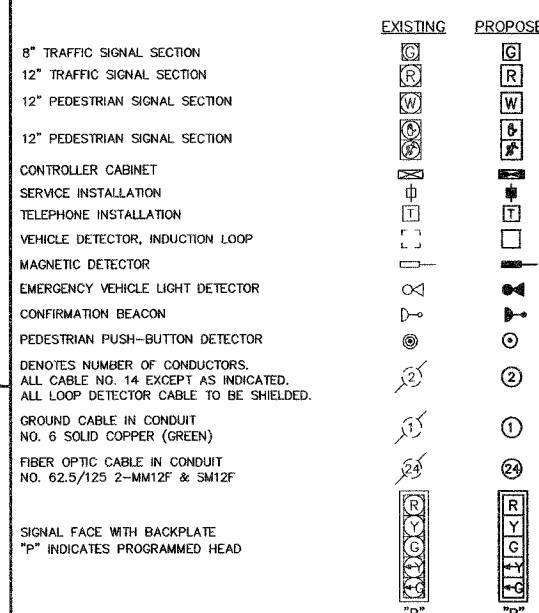
**PROPOSED PREEMPTOR LANES**

PREEMPTOR LANE INTERVAL	3	4
MOVEMENT	← →	← →

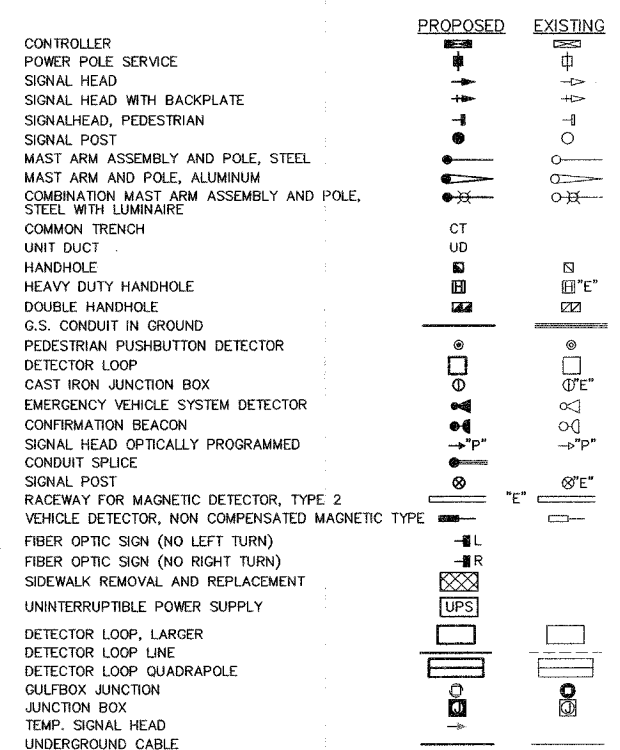
**PREEMPTOR PHASING DIAGRAM**

EMERGENCY VEHICLE PREEMPTION SEQUENCE NOTES FOR DUAL ENTRY OPERATION - ALL LEGS

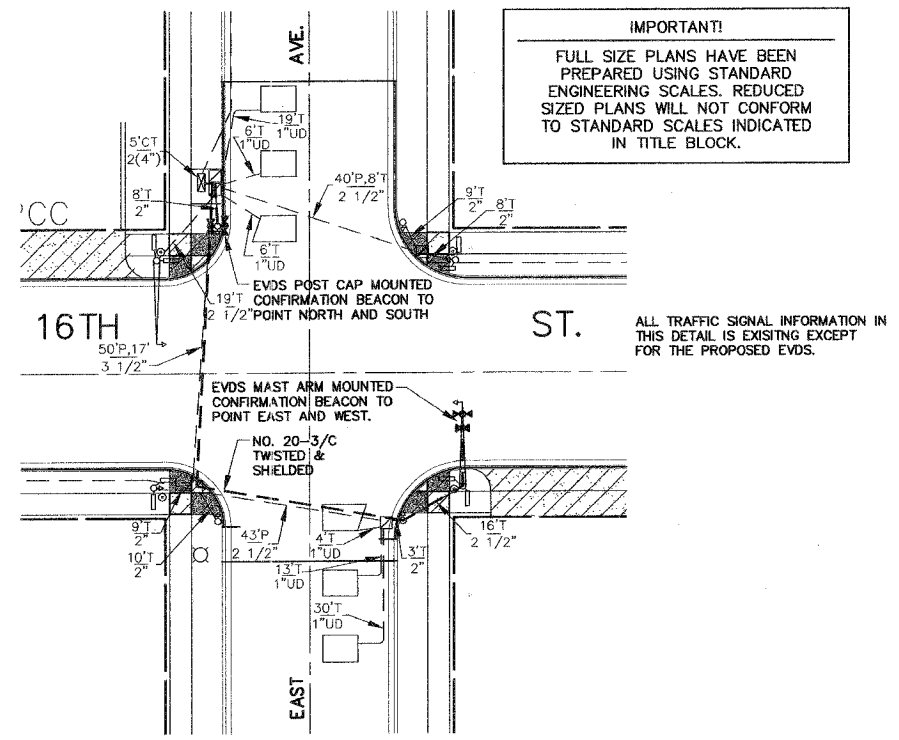
**CABLE PLAN LEGEND**



**TRAFFIC SIGNAL LEGEND**



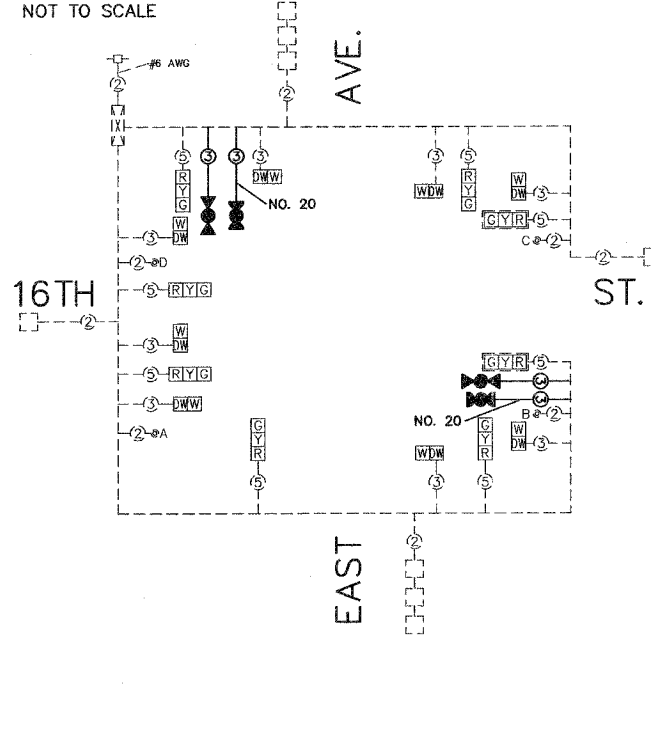
NOT TO SCALE



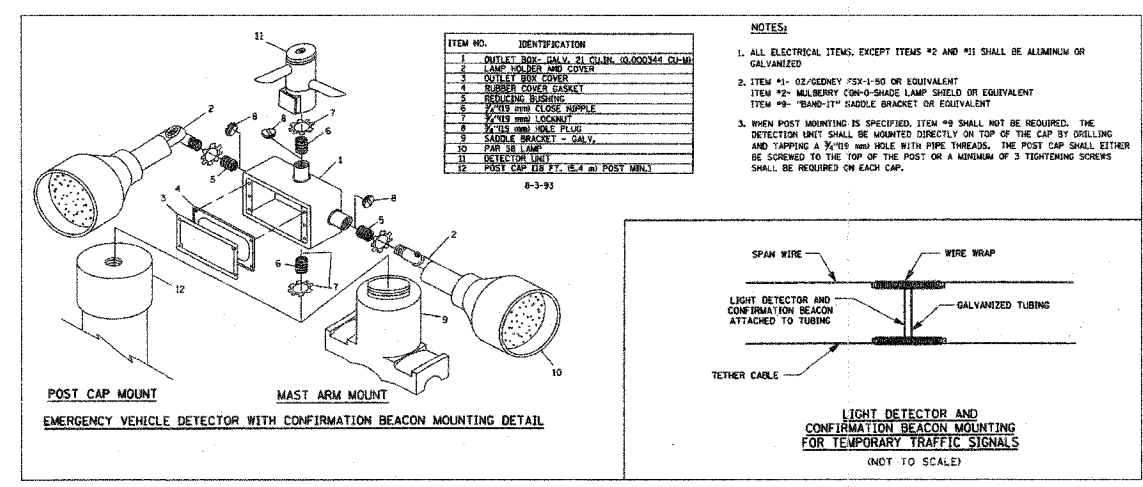
EXISTING TRAFFIC SIGNAL PLAN AND PROPOSED EVDS PLACEMENT



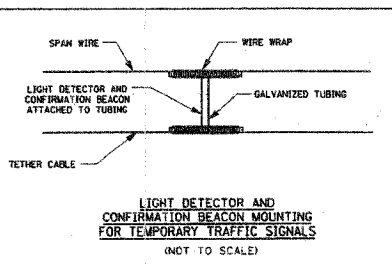
NOT TO SCALE



CABLE PLAN



EMERGENCY VEHICLE DETECTOR WITH CONFIRMATION BEACON MOUNTING DETAIL



LIGHT DETECTOR AND CONFIRMATION BEACON MOUNTING FOR TEMPORARY TRAFFIC SIGNALS (NOT TO SCALE)

**REVISIONS**

NO.	BY	DATE	DESCRIPTION
1	THK	11/30/05	PER IDOT DIST. 1 B.L.R. COMMENTS
2	THK	12/14/05	PER IDOT DIST. 1 B.L.R. COMMENTS
3	THK	12/16/05	PER IDOT DIST. 1 B.L.R. COMMENTS

**EMERGENCY VEHICLE DETECTION SYSTEM**

PROJECT NO. 02260	SCALE VARIES	SHEET 15
DRAWN/DESIGNED JEP-RAW/THK	DATE OCT., 2005	OF 24
CHECKED/APPROVED JEF	FIELD BOOK NO. FILE	SHEETS

M:\Berwyn\2005\02260-SHT\05-09\_PavePlan-14\_Drawing-15\_Opticom-16\_Prefab-17-18\_Signage.dwg, 12/20/2005 11:20:38 PM