

PROJECT	SECTION	COUNTY	SHEET	TOTAL SHEETS
245	98-20101-00-BR	BUREAU	65	55
FED. ROAD DIST. NO. 7	ILLINOIS	FED. AID PROJECT-BROS-OII(G2)		

**STRUCTURAL SHEET 22 OF 25**  
**BILL OF MATERIAL - E. ABUT.**

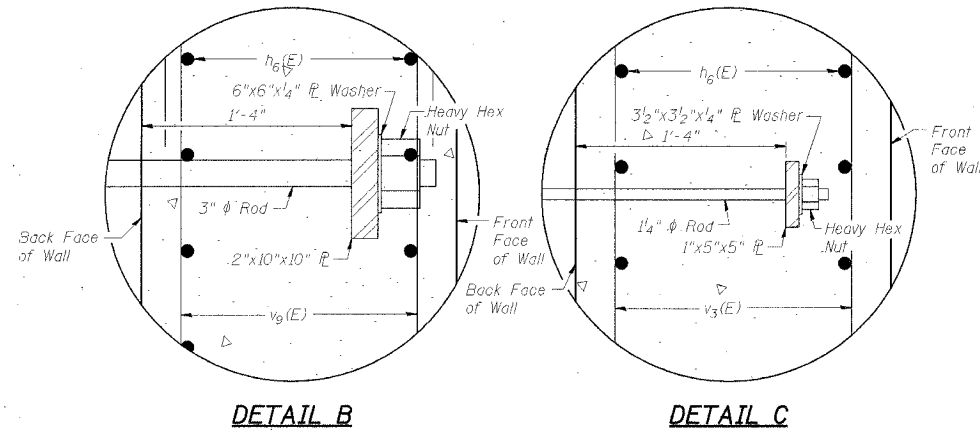
Bar	No.	Size	Length	Shape
h(E)	14	#9	37'-6"	↔
h1(E)	14	#7	36'-8"	↔
h2(E)	28	#9	11'-6"	↔
h3(E)	28	#7	6'-10"	↔
h4(E)	16	#6	35'-0"	↔
h5(E)	15	#5	35'-0"	↔
h6(E)	116	#5	39'-2"	↔
h7(E)	21	#5	26'-4"	↔
h8(E)	8	#9	33'-6"	↔
h9(E)	9	#6	31'-0"	↔
n(E)	334	#5	4'-10"	↔
s(E)	34	#5	21'-9"	↔
s1(E)	2	#6	19'-3"	↔
s2(E)	6	#5	16'-9"	↔
s3(E)	30	#4	11'-5"	↔
t	80	#5	3'-8"	↔
t1	104	#5	5'-8"	↔
t2	50	#6	12'-3"	↔
u(E)	74	#4	3'-5"	↔
u1(E)	28	#5	4'-0"	↔
u2(E)	12	#6	8'-6"	↔
v3(E)	212	#4	14'-5"	↔
v6(E)	20	#6	4'-0"	↔
v8(E)	32	#5	5'-0"	↔
v9(E)	212	#5	13'-7"	↔
v10(E)	25	#5	23'-0"	↔
v11(E)	72	#5	20'-5"	↔
v12(E)	22	#5	20'-5"	↔
v13(E)	10	#5	15'-11"	↔
v14(E)	6	#5	27'-1"	↔
w	22	#5	46'-8"	↔
w1	8	#5	27'-2"	↔
w2	10	#5	37'-0"	↔

Item	Quantity	Unit	Sum
Porous Granular Backfill		Cu. Yd.	1077
Concrete Structures		Cu. Yd.	313.4
Furnishing & Erecting Structural Steel		L. Sum	1
Reinforcement Bars		Pound	3250
Reinforcement Bars, Epoxy Coated		Pound	23890
Cofferdams		Each	1
Hardware		Pound	5477
Furnishing Metal Pile Sheets-14"		Foot	1225
Driving & Filling Shells		Foot	1225
Test Pile-14" Metal Shell		Each	1
Form Liner Textured Surface		Sq. Yd.	345
Cofferdam Excavation		Cu. Yd.	1262

**NOTES:**

- All Exposed Edges shall have 3/4" Chamfer.
- Reinforcement Bars Designated (E) shall be Epoxy Coated.
- Space Reinforcing to miss Anchor Bolts.
- All Hardware shall be Hot Dipped Galvanized in accordance with AASHTO M-232.
- Concrete Form Liner shall be placed on Front Face of All Abutment and Wingwall Regions except Approach Pavement Cross Beam. Concrete Form Liner shall also be Placed on Exposed Portions of the Back Face of All Wingwalls with Vertical Joint Locations Set to Match Front Face Form Liner. The Top of the Wingwalls shall have a Tooled Joint Across Their Width to Create the Look of a Limestone Block Wall.
- Contractor shall pour the Approach Pavement Cross Beam after Timber Structure has been Erected to ensure 1/2" Gap is maintained between Timber Bridge Deck and Concrete Cross Beam.
- Abutment shall be Backfilled with Porous Granular Backfill. Pay Limits for Porous Granular Backfill shall be the Area Enclosed From the Top of Footing & End of Wingwall.
- Steel Plates in Substructure Shall be Hot Dipped Galvanized in Accordance with AASHTO M-232 and Paid for at the Lump Sum Price for "Furnishing and Erecting Structural Steel"
- \* See Special Provisions.

**EAST ABUTMENT DETAILS**  
**SECTION 98-20101-00-BR**  
**STA. 13+70, S.N. 006-4288**  
**T.R. 245 OVER BIG BUREAU CREEK**  
**BUREAU COUNTY**  
WHA # 1104D04



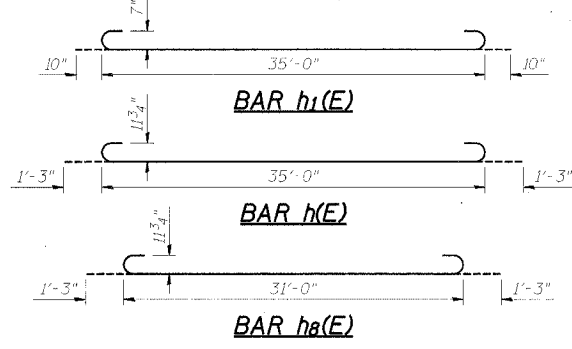
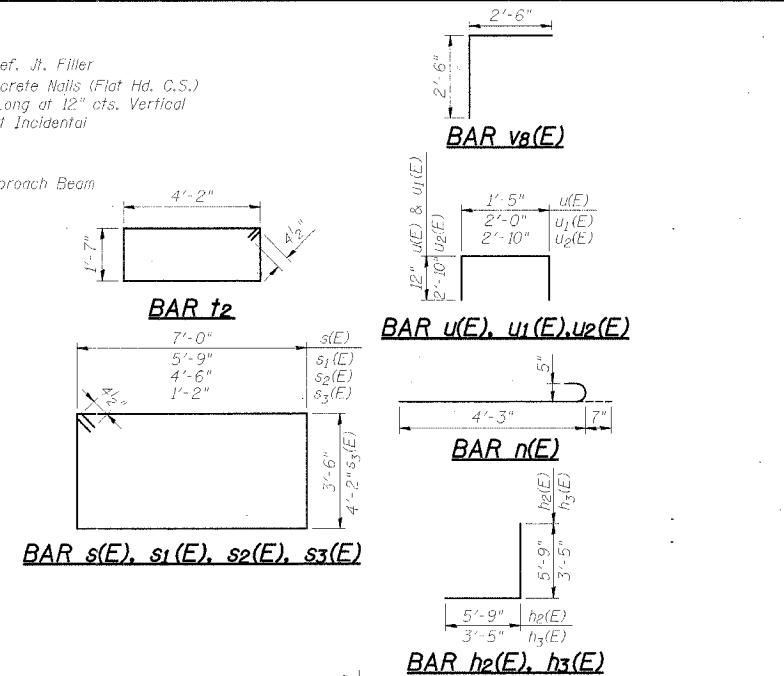
**P.J.F. DETAIL**

1/2" Pref. Jt. Filler  
Concrete Nails (Flat Hd. C.S.)  
1" Long at 12" cts. Vertical  
Cost Incidental

Approach Beam

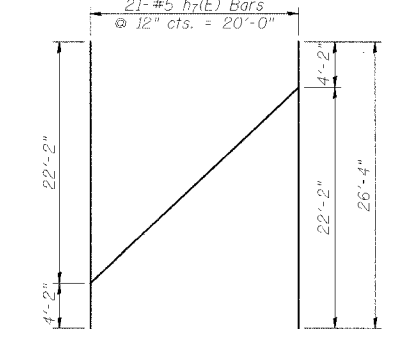
MINIMUM BAR LAPS	SIZE	LENGTH
#4	1'-8"	
#5	2'-2"	
#6	2'-7"	
#7	3'-5"	
#8	4'-6"	
#9	5'-9"	

**NOTATIONS**  
E.F. = Each Face  
B.F. = Back Face  
F.F. = Front Face  
W.W. = Wingwall



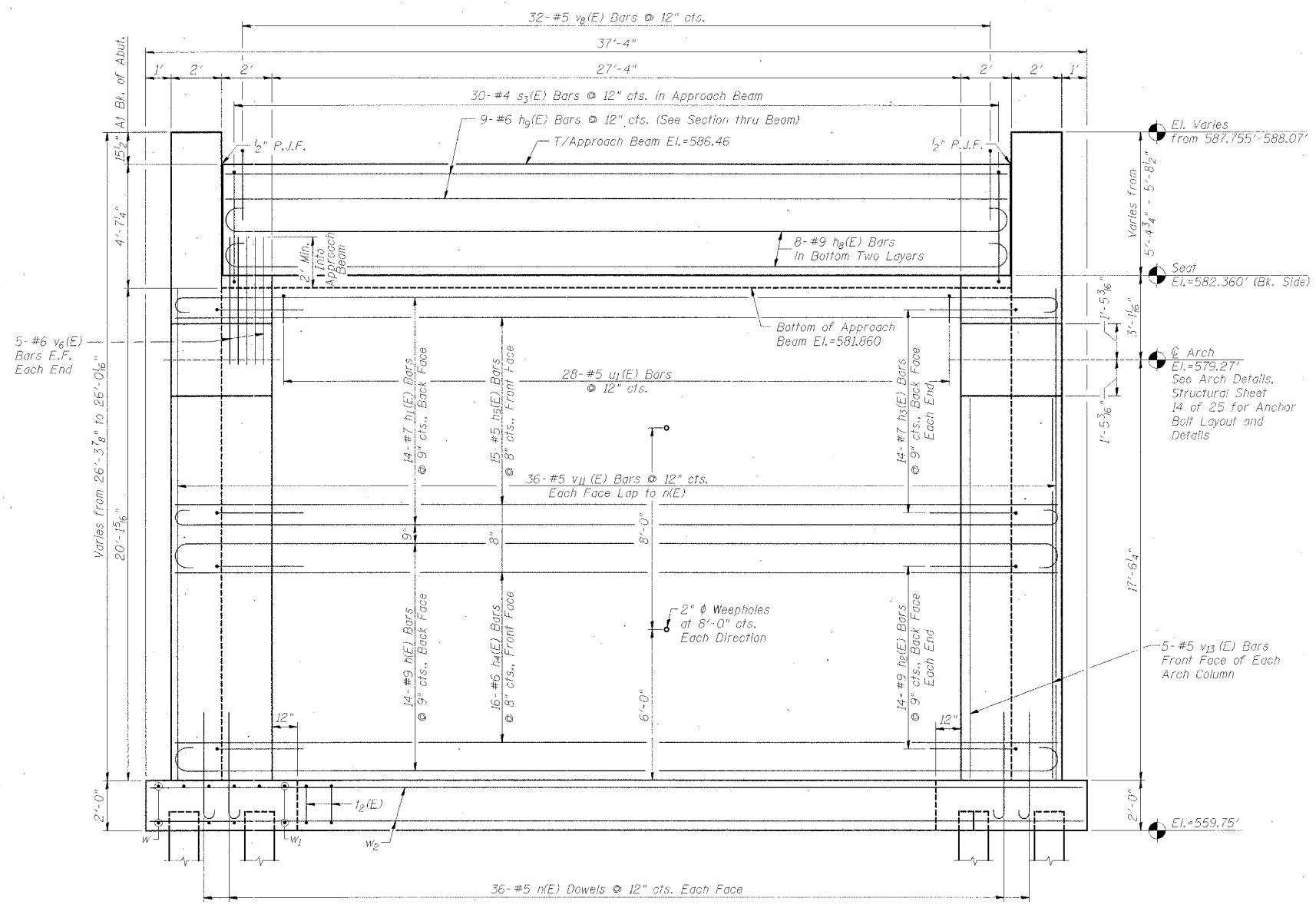
**v10(E) FIELD CUTTING DIAGRAM**

Cut Bars in Field & Use Remainder of Bars in Other Buttress



**h7(E) FIELD CUTTING DIAGRAM**

Cut Bars in Field & Use Remainder of Bars in Other Buttress



**ABUTMENT ELEVATION - SECTION 5-5**