

P.O.T. STA. 10+01.33  
P.K. NAIL - (FLUSH)  
N. 1234310.6640  
E. 847342.1343

P.O.T. STA. 7+00.0000  
N. 1234009.8681  
E. 847324.1906

RT. STA 10+03 S.R.  
EXIST. 18" C.M.P. TO REMAIN  
U.S.F.L. 24' RT. STA. 10+28 = 697.64  
D.S.F.L. 25' RT. STA. 9+81 = 697.21

AR. STA 10+45  
EXIST. 24" ELLIP. EQ. R.S.(R.C.C.P.)  
W/CONC. END SECTIONS  
U.S.F.L. 697.21 AT 17'0" LT.  
D.S.F.L. 697.15 AT 18.9' RT.  
TO BE EXTENDED  
LEFT:  
REMOVE AND RE-INSTALL END SECTIONS,  
PIPE CULVERT = 1 EACH  
P. CUL. 1 RC-E  
EQRS 24" = 5 FOOT  
U.S.F.L. AT END OF END SECTION 697.30  
RIGHT:  
REMOVE AND RE-INSTALL END SECTIONS,  
PIPE CULVERT = 1 EACH  
P. CUL. 1 RC-E  
EQRS 24" = 3 FOOT  
D.S.F.L. AT END OF END SECTION 697.10  
CLEANING CULVERTS = 1 L. SUM  
C.L.S.M. = 0.90 CU YD  
CLASS D PATCHES, TYPE I 6" = 1.9 SQ YD

SE 1/4, SEC 35, T.19N, R. 3E, 3rd PM  
**MARK JORSTAD**

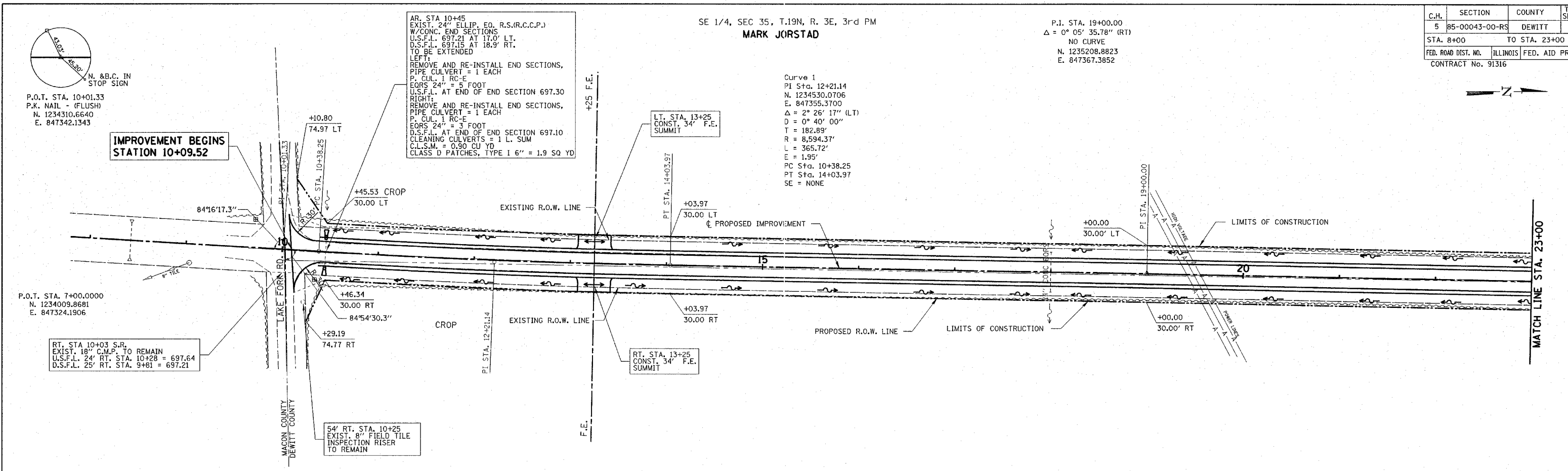
P.I. STA. 19+00.00  
 $\Delta = 0^\circ 05' 35.78''$  (RT)  
NO CURVE  
N. 1235208.8823  
E. 847367.3852

Curve 1  
PI Sta. 12+21.14  
N. 1234530.0706  
E. 847355.3700  
 $\Delta = 2^\circ 26' 17''$  (LT)  
D =  $0^\circ 40' 00''$   
T = 182.89'  
R = 8,594.37'  
L = 365.72'  
E = 1.95'  
PC Sta. 10+38.25  
PT Sta. 14+03.97  
SE = NONE

C.H.	SECTION	COUNTY	TOTAL SHEETS
5	85-00043-00-RS	DEWITT	79
STA. 8+00		TO STA. 23+00	
FED. ROAD DIST. NO.		ILLINOIS	FED. AID PROJECT
CONTRACT No. 91316			

DATE	BY	REVISION

DATE	BY	REVISION



**MARK JORSTAD**  
SW 1/4, SEC 36, T.19N, R. 3E, 3rd PM

