

C.H.	SECTION	COUNTY	TOTAL SHEETS
5	85-00043-00-RS	DEWITT	79
STA. 53+00		TO STA. 68+00	
FED. ROAD DIST. NO.		ILLINOIS	FED. AID PROJECT
CONTRACT No. 91316			

P.I. STA. 55+00.00
 $\Delta = 0^\circ 15' 42.38''$ (LT)
 NO CURVE
 N. 1238808.3798
 E. 847426.9390

A.R. STA. 53+40
 EXIST. 48" ELLIP. EQ. R.S. (R.C.C.P.)
 W/CONCRETE END SECTIONS
 U.S.F.L. 649.52 AT 16.7' LT.
 D.S.F.L. 694.51 AT 19.8' RT.
 TO BE EXTENDED
 LEFT:
 REMOVE AND RE-INSTALL END SECTIONS,
 PIPE CULVERT = 1 EACH
 P. CUL. 1 RC-E
 EORS 48" = 6 FOOT
 U.S.F.L. AT END OF END SECTION 694.60
 RIGHT:
 REMOVE AND RE-INSTALL END SECTIONS,
 PIPE CULVERT = 1 EACH
 P. CUL. 1 RC-E
 EORS 48" = 6 FOOT
 U.S.F.L. AT END OF END SECTION 694.45
 D.S.F.L. = 3.7 CU. YD.
 CLASS D PATCHES, TYPE II, 6" = 5.7 SQ. YD.

BETTY ANN KIZER
 NE 1/4, NE 1/4, SEC 35, T.19N, R.3E, 3rd PM

P.I. STA. 63+09.46
 $\Delta = 0^\circ 02' 20.66''$ (LT)
 NO CURVE
 N. 1239617.7833
 E. 847436.6395

ALICE G. SPENCER
 S 1/2, SE 1/4, SEC 26, T.19N, R.3E, 3rd PM

P.I. STA. 67+00.01
 $\Delta = 0^\circ 34' 47.61''$ (RT)
 NO CURVE
 N. 1240008.3025
 E. 847441.0534

22' LT. STA. 53+36
 EXIST. INLET TO REMAIN
 TOP OF GRATE ELEV. 696.24

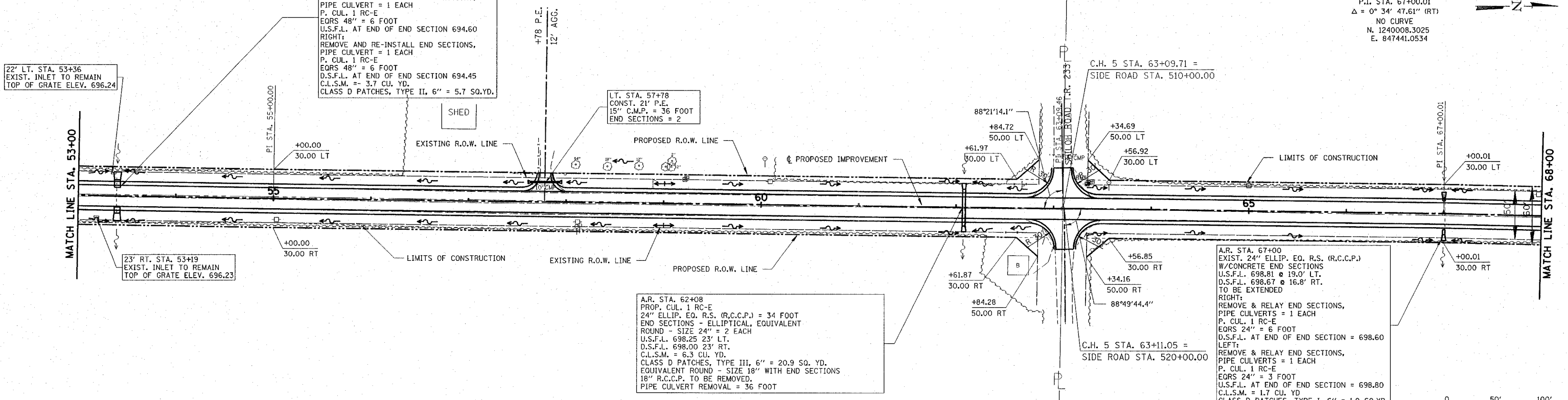
23' RT. STA. 53+19
 EXIST. INLET TO REMAIN
 TOP OF GRATE ELEV. 696.23

LT. STA. 57+78
 CONST. 21' P.E.
 15" C.M.P. = 36 FOOT
 END SECTIONS = 2

C.H. 5 STA. 63+09.71 =
 SIDE ROAD STA. 510+00.00

C.H. 5 STA. 63+11.05 =
 SIDE ROAD STA. 520+00.00

A.R. STA. 67+00
 EXIST. 24" ELLIP. EQ. R.S. (R.C.C.P.)
 W/CONCRETE END SECTIONS
 U.S.F.L. 698.81 @ 19.0' LT.
 D.S.F.L. 698.67 @ 16.8' RT.
 TO BE EXTENDED
 RIGHT:
 REMOVE & RELAY END SECTIONS,
 PIPE CULVERTS = 1 EACH
 P. CUL. 1 RC-E
 EORS 24" = 6 FOOT
 D.S.F.L. AT END OF END SECTION = 698.60
 LEFT:
 REMOVE & RELAY END SECTIONS,
 PIPE CULVERTS = 1 EACH
 P. CUL. 1 RC-E
 EORS 24" = 3 FOOT
 U.S.F.L. AT END OF END SECTION = 698.80
 C.L.S.M. = 1.7 CU. YD.
 CLASS D PATCHES, TYPE I, 6" = 1.9 SQ. YD.



CITY OF DECATUR
 NW 1/4, NW 1/4, SEC 36, T.19N, R.3E, 3rd PM

ARTHUR E. VOORHEES FAMILY TRUST
 SW 1/4, SEC 25, T.19N, R.3E, 3rd PM

