

DATE	
BY	
SURVEYED	
GRADES CHECKED	
ALLOMANY CHECKED	
RT. OF WAY CHECKED	
NOTE BOOK	
NO.	
SAID FILE NAME	

DATE	
BY	
SURVEYED	
GRADES CHECKED	
B.M. NOTED	
STRUCTURE INDENTUS CHECKED	
NOTE BOOK	
NO.	

C.H.	SECTION	COUNTY	TOTAL SHEETS
5	85-00043-00-RS	DEWITT	79
STA. 158+00		TO STA. 173+00	
FED. ROAD DIST. NO.		ILLINOIS	FED. AID PROJECT
CONTRACT No. 91316			

GORDON & WILMA GOBLE
NE 1/4, SEC 23, T.19N, R. 3E, 3rd PM

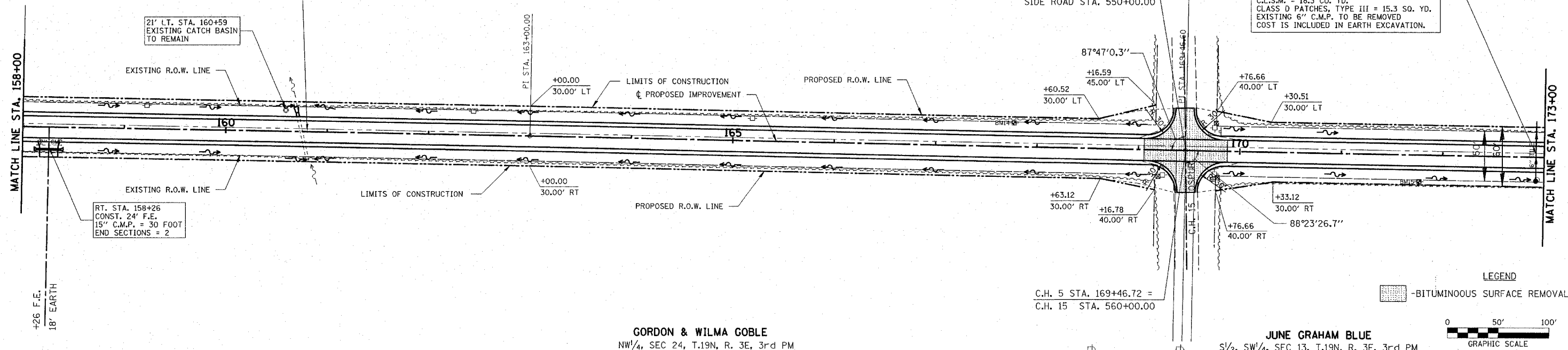
DARRELL B. & FONTAINE WANTLAND
SE 1/4, SEC 14, T.19N, R. 3E, 3rd PM

A.R. STA. 160+77 SKEW = 13° RT. FORWARD
EXISTING 24" EQ.R.S. (RCCP) WITH CONCRETE END SECTIONS
18.8' LT. STA. 160+72.76 D.S.F.L. 708.6
TO BE EXTENDED
LT. REMOVE AND RE-INSTALL END SECTIONS,
PIPE CULVERT = 1 EACH
P. CUL. 1 RC-E
EQ.R.S. 24" = 4 FOOT
D.S.F.L. AT END OF END SECTION 708.50
C.L.S.M. = 0.4 CU. YD.
CLASS D PATCHES, TYPE I, 6" = 3.8 SQ. YD.

P.I. STA. 163+00.00
Δ = 0° 09' 45.24" (RT)
NO CURVE
N. 1249606.9277
E. 847599.8918

P.I. STA. 169+46.60
Δ = 0° 09' 52.22" (LT)
NO CURVE
N. 1250253.3861
E. 847613.3363

A.R. STA. 172+92
STORM SEWERS, CLASS A, TYPE 1
6" = 60 FOOT
RIGHT STA. 172+92
REMOVE EXISTING CATCH BASIN = 1 EACH
CATCH BASINS, TYPE C, TYPE 8
GRATE = 1 EACH
24" RT. TOP OF GRATE ELEV. 709.40
C.L.S.M. = 18.3 CU. YD.
CLASS D PATCHES, TYPE III = 15.3 SQ. YD.
EXISTING 6" C.M.P. TO BE REMOVED
COST IS INCLUDED IN EARTH EXCAVATION.



GORDON & WILMA GOBLE
NW 1/4, SEC 24, T.19N, R. 3E, 3rd PM

JUNE GRAHAM BLUE
S 1/2, SW 1/4, SEC 13, T.19N, R. 3E, 3rd PM

