

DATE: _____
 BY: _____
 SURVEYED: _____
 ALIGNED: _____
 CHECKED: _____
 RT. OF WAY: _____
 ROAD FILE NAME: _____

DATE: _____
 BY: _____
 SURVEYED: _____
 GRADES: _____
 CHECKED: _____
 B.M. NOTES: _____
 STRUCTURE NOTATIONS: _____
 NO. _____

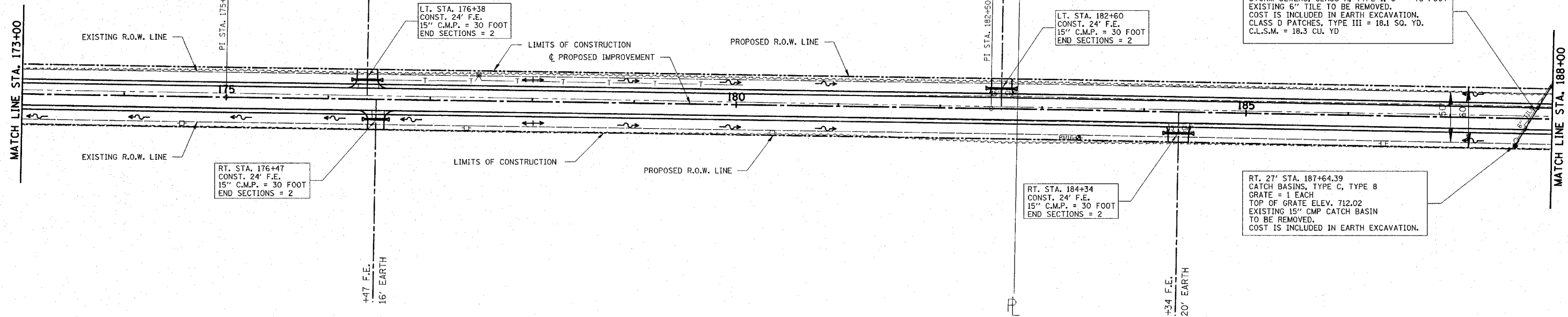
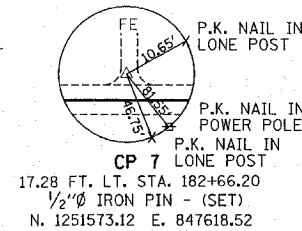
DARRELL B. & FONTAINE WANTLAND
 SE 1/4, SEC 14, T.19N, R. 3E, 3rd PM

P.I. STA. 182+50.02
 $\Delta = 0^\circ 13' 40.27''$ (RT)
 NO CURVE
 N. 1251556.6366
 E. 847634.5188

WESLEY ANDERSON TRUST
 SE 1/4, SEC 14, T.19N, R. 3E, 3rd PM

C.H.	SECTION	COUNTY	TOTAL SHEETS	SH. NO.
5	85-00043-00-RS	DEWITT	79	
STA. 173+00		TO STA. 188+00		
FED. ROAD DIST. NO.		ILLINOIS	FED. AID PROJECT	
CONTRACT No. 91316				

P.I. STA. 175+00.02
 $\Delta = 0^\circ 09' 58.88''$ (LT)
 NO CURVE
 N. 1250806.7197
 E. 847623.2546



LT. STA. 176+38
 CONST. 24' F.E.
 15" C.M.P. = 30 FOOT
 END SECTIONS = 2

RT. STA. 176+47
 CONST. 24' F.E.
 15" C.M.P. = 30 FOOT
 END SECTIONS = 2

LT. STA. 182+60
 CONST. 24' F.E.
 15" C.M.P. = 30 FOOT
 END SECTIONS = 2

RT. STA. 184+34
 CONST. 24' F.E.
 15" C.M.P. = 30 FOOT
 END SECTIONS = 2

A.R. STA. 187+80
 STORM SEWERS, CLASS A, TYPE 1, 6" = 78 FOOT
 EXISTING 6" TILE TO BE REMOVED.
 COST IS INCLUDED IN EARTH EXCAVATION.
 CLASS D PATCHES, TYPE III = 18.1 SQ. YD.
 C.L.S.M. = 18.3 CU. YD

RT. 27' STA. 187+64.39
 CATCH BASINS, TYPE C, TYPE 8
 GRATE = 1 EACH
 TOP OF GRATE ELEV. 712.02
 EXISTING 15" CMP CATCH BASIN
 TO BE REMOVED.
 COST IS INCLUDED IN EARTH EXCAVATION.

JUNE GRAHAM BLUE
 SE 1/4, SEC 13, T.19N, R. 3E, 3rd PM

WINIFRED JUNE BLUE, et. al.
 SW 1/4, SEC 13, T.19N, R. 3E, 3rd PM

