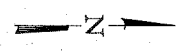
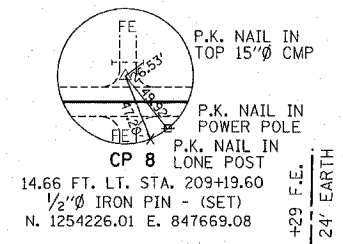


C.H.	SECTION	COUNTY	TOTAL SHEETS	SH
5	85-00043-00-RS	DEWITT	79	N
STA. 203+00		TO STA. 218+00		
FED. ROAD DIST. NO.		ILLINOIS	FED. AID PROJECT	
CONTRACT No. 91316				

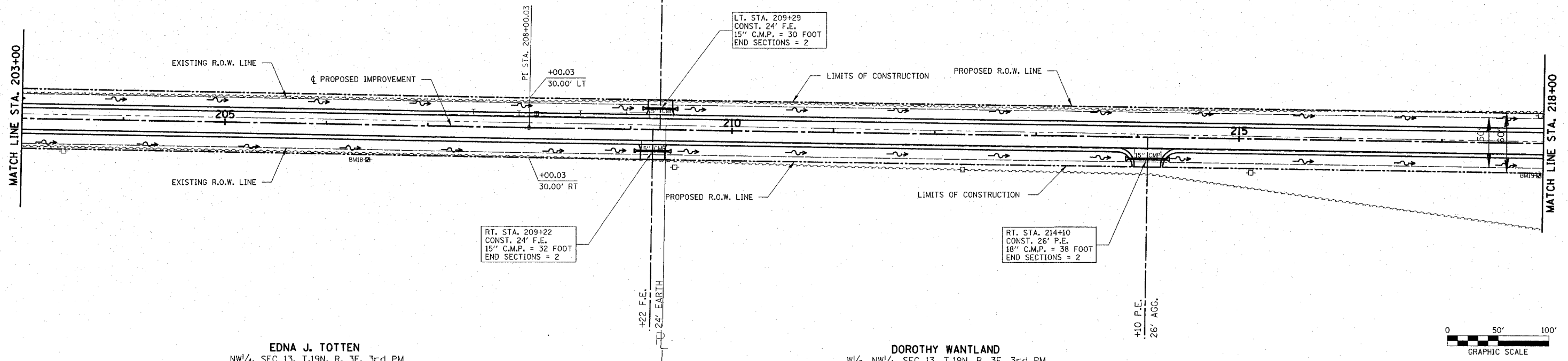
OPAL SHOEMAKER & GLADYS KAUFMAN
NE 1/4, SEC 14, T.19N, R. 3E, 3rd PM

P.I. STA. 208+00.03
Δ = 0° 12' 50.81" (LT)
NO CURVE
N. 1254106.1790
E. 847682.9335



DATE	BY

DATE	BY



EDNA J. TOTTE
NW 1/4, SEC 13, T.19N, R. 3E, 3rd PM

DOROTHY WANTLAND
W 1/2, NW 1/4, SEC 13, T.19N, R. 3E, 3rd PM

