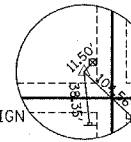


P.I. STA. 269+00.00  
 $\Delta = 0^\circ 16' 32.32''$  (RT)  
 NO CURVE  
 N. 1260205.5755  
 E. 847766.1175

WINIFRED JUNE BLUE, et. al.  
 NE 1/4, SEC 11, T.19N, R. 3E, 3rd PM



CP 12  
 20.14 FT. LT. STA. 275+80.35  
 1/2" Ø IRON PIN - (SET)  
 N. 1260886.16 E. 847755.94

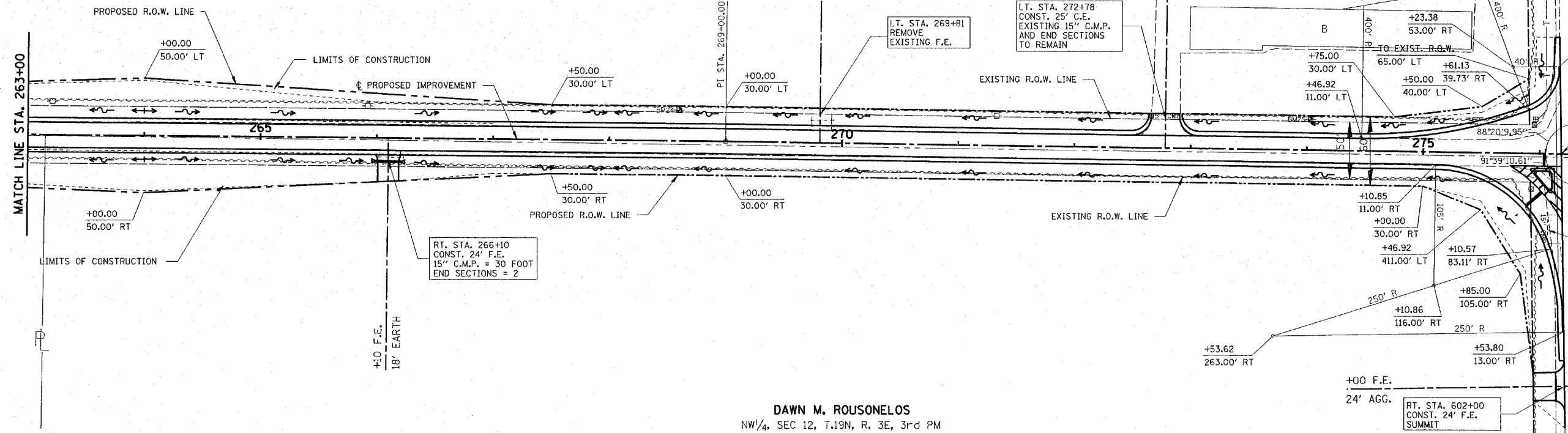
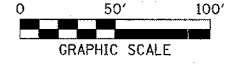
C.H.	SECTION	COUNTY	TOTAL SHEETS
5	85-00043-00-RS	DEWITT	79
STA. 263+00		TO STA. END	
FED. ROAD DIST. NO.		ILLINOIS	FED. AID PROJECT
CONTRACT No. 91316			
P.O.T. STA. 597+03.50			
N. 1260932.3454			
E. 847480.3019			

**IMPROVEMENT ENDS STATION 276+18.67**

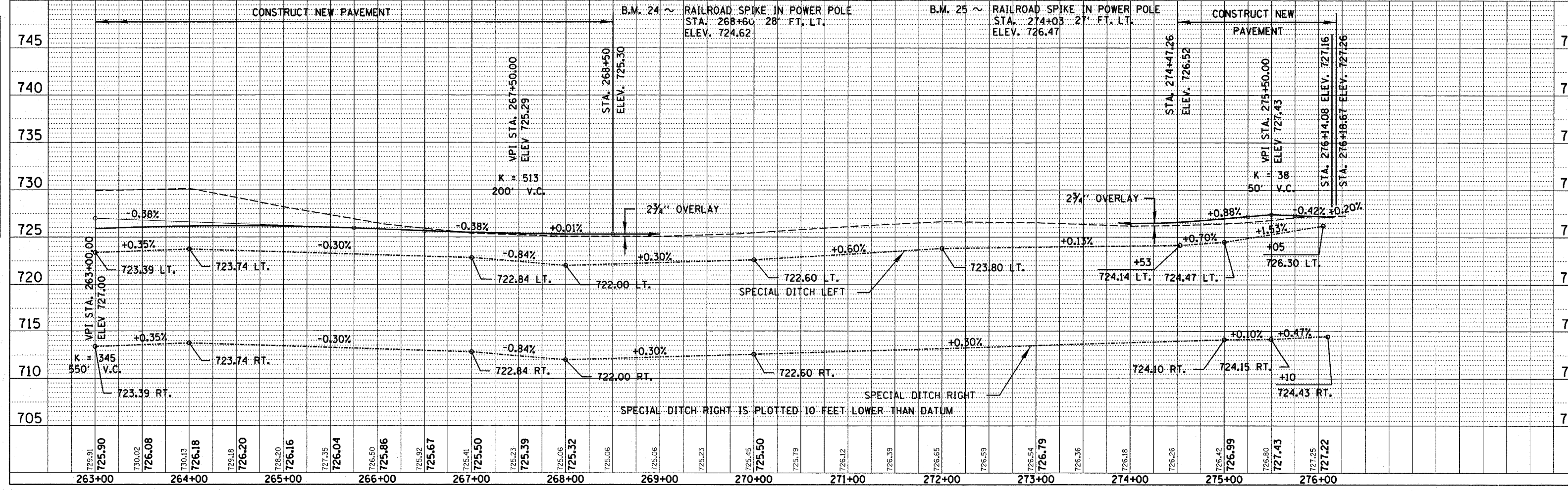
STA. 276+31.44 CH 5 =  
 STA. 600+00.00 IL RTE 10  
 N. 1260936.9402  
 E. 847776.7728

RT. STA. 600+65  
 EXIST. 15" C.M.P. TO BE REMOVED  
 COST IS INCLUDED IN EARTH EXCAVATION  
 C.L.S.M. INCIDENTAL

P.O.T. STA. 603+00.67  
 N. 1260941.5419  
 E. 848077.4052



DAWN M. ROUSONELOS  
 NW 1/4, SEC 12, T.19N, R. 3E, 3rd PM



DATE	BY

DATE	BY

DATE	BY