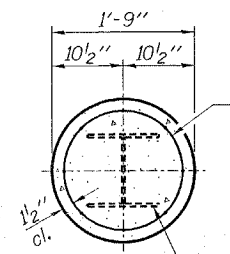
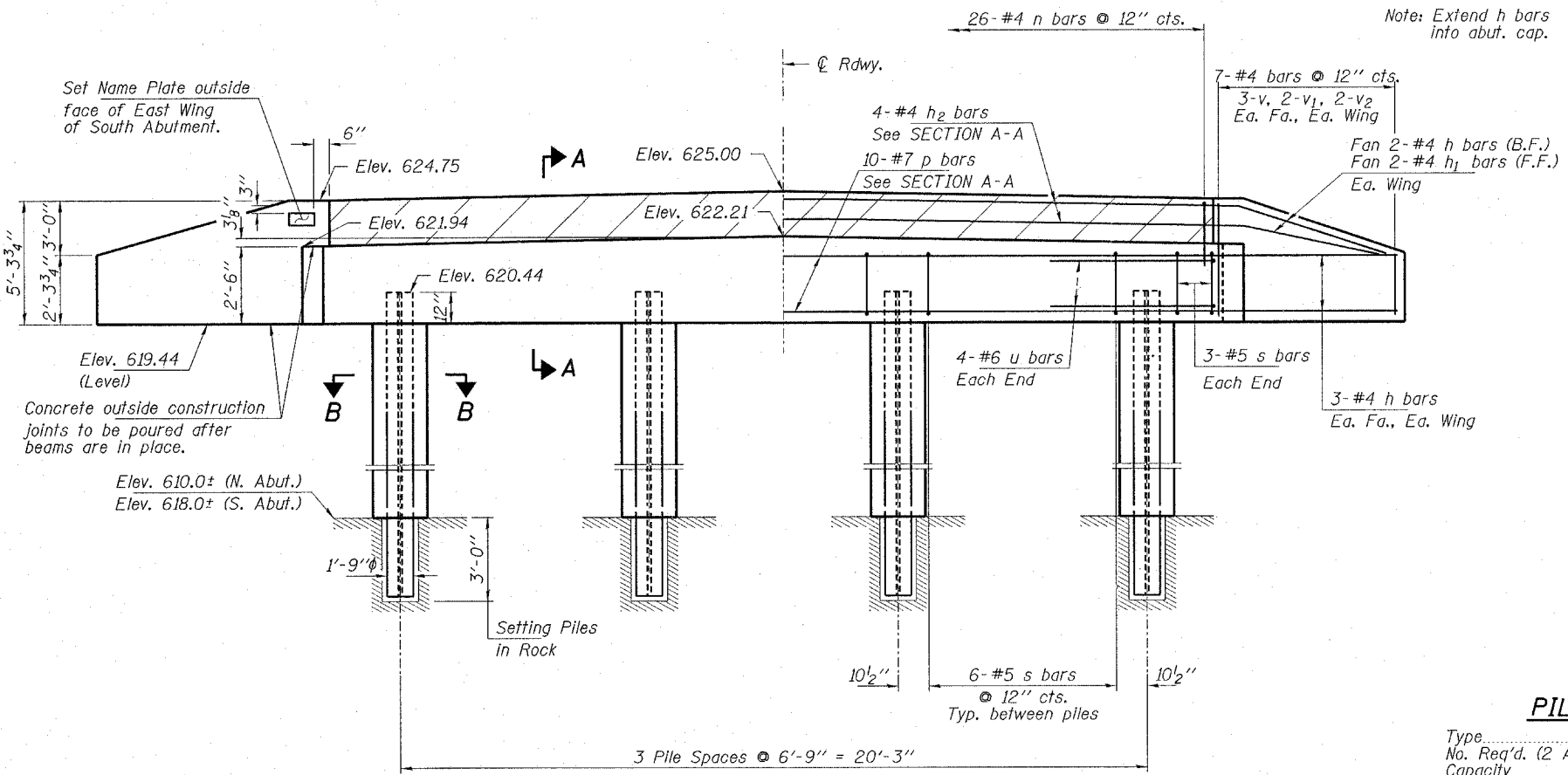


SECTION A-A  
 Hatched area to be poured after beams are in place.



BILL OF MATERIAL - 2 ABUTS.

BAR	NO.	SIZE	LENGTH	SHAPE
h	32	#4	7'-9"	—
h1	8	#4	6'-9"	—
h2	8	#4	25'-7"	—
n	52	#4	7'-9"	⊏
p	20	#7	25'-7"	—
s	48	#5	9'-7"	⊏
u	16	#6	12'-2"	—
v	24	#4	4'-1"	—
v1	16	#4	3'-1"	—
v2	16	#4	2'-1"	—
Concrete Structures			Cu. Yd.	20.0
Reinforcement Bars			Lbs.	2,550
Steel Piles HP10x42			Foot	92
Name Plates			Each	1
Concrete Encasement			Cu. Yd.	3.8
Setting Piles in Rock			Each	8

PILE DATA

Type	Steel HP10x42
No. Req'd. (2 Abut.)	8
Capacity	50 Ton/Pile
Est. Length	8 Feet/Pile (S. Abut.) 15 Feet/Pile (N. Abut.)

**HLR**

Rice, Berry and Associates  
 A Division of Hampton, Lenzi and Renwick, Inc.  
 Civil & Structural Engineers  
 3085 Stevenson Drive  
 Suite 201  
 Springfield, Illinois 62703  
 217-546-3400

Account Number  
 12-87-0013-1  
 Date: 12/07/05  
 P.O. Box 1036  
 DuQuoin, Illinois 62832  
 618-790-4637

DESIGNED: D.B. CHECKED: S.W.M. DRAWN: D.B.

**ABUTMENTS**  
 SECTION 02-23112-00-BR  
 TOWER HILL ROAD DISTRICT  
 SHELBY COUNTY  
 STR. NO. 087-3537 / STATION 10+00