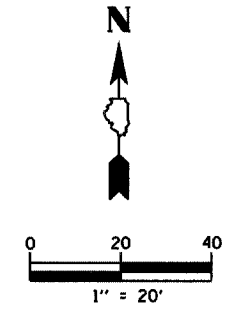


F.A.D. RTE.	SECTION	COUNTY	TOTAL SHEETS	SHEET NO.
6998	99-00209-02-PV	VERMILION	72	19
STA. 109+00		TO STA. 115+00		
FED. ROAD DIST. NO. ILLINOIS		FED. AID PROJECT-		
CONTRACT NO.: 91356				



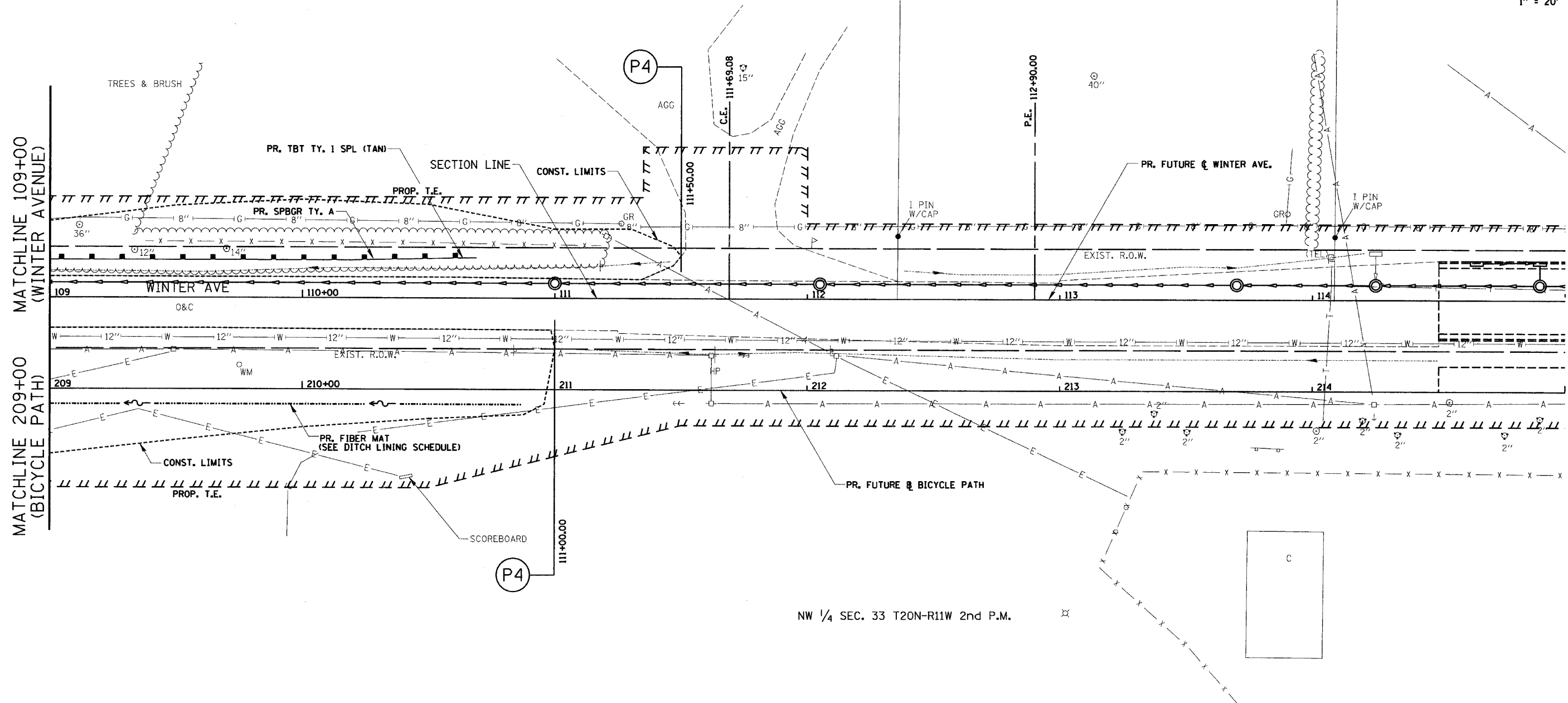
GUARDRAIL SCHEDULE

FROM STATION	TO STATION	LT/RT	SPBGR TY A (FT)	TR BAR TRM TI SPL TAN (EACH)	GUARDRAIL MARKERS (EACH)	TERMINAL MARKER DA (EACH)
109+00.00	110+18.85	LT	118.85		2	
110+18.85	110+68.85	LT		1		1
SHEET TOTALS			118.85	1	2	1

(P1) TO (P4) = REFERENCE PROPOSED TYPICAL SECTIONS

SW 1/4 SEC. 28 T20N-R11W 2nd P.M.

DATE	
BY	
PLAN	
SURVEYED	
ALIGNED	
CHECKED	
NO. OF WAY CHECKED	
DATE FILED	
NAME	



NW 1/4 SEC. 33 T20N-R11W 2nd P.M.

REVISIONS	
NAME	DATE

CITY OF DANVILLE, ILLINOIS
**WINTER AVENUE RECONSTRUCTION
 PROPOSED ROADWAY PLAN
 WINTER AVENUE/BICYCLE PATH
 STA. 109+00 TO STA. 115+00**

SCALE: 1" = 20'
 DRAWN BY: NIL

DATE: 12/30/05
 CHECKED BY: XXX