

teeslejack
12/23/2005
c:\projects\94964d\03502pa.dgn

CONTRACT NO. 94964

F.A.P. RTE.	SECTION	COUNTY	TOTAL SHEETS	SHEET NO.
327	13B-1&13B-2	MARION	78	2
STA.		TO STA.		
FED. ROAD DIST. NO.		ILLINOIS FED. AID PROJECT		

GENERAL NOTES

THE WORK INCLUDED IN THIS SECTION CONSISTS OF COMPLETE REMOVAL AND REPLACEMENT OF THE EXISTING STRUCTURE ON US 50 OVER DUMS CREEK WITH A NEW THREE SPAN CLOSED ABUTMENT STRUCTURE AND REMOVAL AND REPLACEMENT OF THE EXISTING STRUCTURE ON US 50 OVER SKILLET FORK CREEK WITH A NEW TWO SPAN CLOSED ABUTMENT STRUCTURE. THE WORK IN THIS SECTION ALSO CONSISTS OF APPROACH PAVEMENTS, EARTHWORK, BITUMINOUS RESURFACING, BITUMINOUS AND AGGREGATE SHOULDERS, GUARDRAIL, AND OTHER WORK NECESSARY TO COMPLETE THIS SECTION. THIS WORK SHALL BE DONE UTILIZING STAGE CONSTRUCTION AND TRAFFIC SIGNALS.

THE CONTRACTOR SHALL PROVIDE INTERNET ACCESS TO THE BITUMINOUS PLANT QUALITY CONTROL LAB SO THAT BITUMINOUS PLANT REPORTS CAN BE E-MAILED TO THE DISTRICT HEADQUARTERS. THIS WORK WILL NOT BE PAID FOR SEPARATELY BUT SHALL BE INCLUDED IN THE UNIT PRICES FOR OTHER ITEMS IN THE CONTRACT.

BITUMINOUS MATERIALS (PRIME COAT) SHALL BE EITHER RC-70 OR SS-1HP.

THE COST OF REMOVAL OF THE TEMPORARY RAMP SHALL BE INCLUDED IN THE UNIT PRICE FOR TEMPORARY RAMP.

THE MATERIAL USED FOR AGGREGATE SHOULDERS, TYPE B SHALL BE CRUSHED STONE, CRUSHED CONCRETE, OR RAP.

EXCAVATION QUANTITIES FOR WIDENING SHALL NOT BE PAID FOR SEPARATELY, BUT HAVE BEEN INCLUDED IN THE QUANTITY FOR PAVED SHOULDER REMOVAL.

THE CONTRACTOR SHALL MAINTAIN ACCESS AT ALL TIME TO THE FIELD ENTRANCES WITHIN THE LIMITS OF THE PROJECT.

THE LOCATIONS AND/OR DEPTHS OF UNDERGROUND UTILITIES SHOWN HAVE BEEN TAKEN FROM INFORMATION FURNISHED BY THE UTILITY OWNERS AND MUST BE CONSIDERED APPROXIMATE. FIELD MARKINGS OF FACILITIES IN CRITICAL AREAS MAY BE OBTAINED BY PROVIDING A MINIMUM OF 96 HOURS ADVANCE NOTICE THROUGH THE J.U.L.I.E. SYSTEM BY CALLING 800-892-0123.

QUANTITIES OF BITUMINOUS CONCRETE SURFACE COURSE WERE CALCULATED USING THE FACTOR 2.016 TON/CU YD.

THE FOLLOWING MIXTURE REQUIREMENTS ARE APPLICABLE TO THIS PROJECT:

MIXTURE USE(S):	SURFACE COURSE	MIXTURE USE(S):	BINDER COURSE
AC/PG:	PG 64-22	AC/PG:	PG 64-22
RAP%: (MAX)	10%	RAP%: (MAX)	25%
DESIGN AIR VOIDS:	4.0% @ NDESIGN = 90	DESIGN AIR VOIDS:	4.0% @ NDESIGN = 70
MIXTURE COMPOSITION:		MIXTURE COMPOSITION:	
(GRADATION MIXTURE)	IL-9.5	(GRADATION MIXTURE)	IL-19.0
FRICTION AGGREGATE:	MIXTURE C	FRICTION AGGREGATE:	N/A

MIXTURE USE(S):	BASE COURSE WIDENING
AC/PG:	PG 64-22
RAP%: (MAX)	25%
DESIGN AIR VOIDS:	4.0% @ NDESIGN = 70
MIXTURE COMPOSITION:	
(GRADATION MIXTURE)	IL-19.0
FRICTION AGGREGATE:	N/A

MIXTURE USE(S):	BRIDGE APPROACH PAVEMENT CONNECTOR
AC/PG:	PG 64-22
RAP%: (MAX)	25%
DESIGN AIR VOIDS:	4.0% @ NDESIGN = 70
MIXTURE COMPOSITION:	
(GRADATION MIXTURE)	IL-19.0
FRICTION AGGREGATE:	N/A

MIXTURE USE(S):	BITUMINOUS SHOULDERS, BOTTOM LIFT
AC/PG:	PG 58-22
RAP%: (MAX)	25%
DESIGN AIR VOIDS:	2.0% @ NDESIGN = 30
MIXTURE COMPOSITION:	
(GRADATION MIXTURE)	N/A
FRICTION AGGREGATE:	N/A

MIXTURE USE(S):	BITUMINOUS SHOULDERS, TOP LIFT, 2"
AC/PG:	PG 64-22
RAP%: (MAX)	15%
DESIGN AIR VOIDS:	4.0% @ NDESIGN = 50
MIXTURE COMPOSITION:	
(GRADATION MIXTURE)	IL-9.5
FRICTION AGGREGATE:	MIXTURE C

INDEX OF SHEETS

SHEET NO	TITLE
1	COVER SHEET
2	GENERAL NOTES, INDEX OF SHEETS, LIST OF STANDARDS
3-5	SUMMARY OF QUANTITIES
6-8	TYPICAL SECTIONS
9	SCHEDULES & ALIGNMENT TIES
10-13	PLAN SHEETS
14-17	STAGE CONSTRUCTION SHEETS
18-34	DUMS CREEK BRIDGE PLANS
35-51	SKILLET FORK CREEK BRIDGE PLANS
52-66	CROSS SECTIONS FOR DUMS CREEK
67-78	CROSS SECTIONS FOR SKILLET FORK CREEK
79	CONCRETE PARAPET SLIPFORMING OPTION DETAIL

THE FOLLOWING STANDARDS ARE A PART OF THESE PLANS AND ARE INCLUDED FOLLOWING SHEET NUMBER 78:

000001-04	STANDARD SYMBOLS, ABBREVIATIONS AND PATTERNS
001006	DECIMAL OF AN INCH AND OF A FOOT
280001-02	TEMPORARY EROSION CONTROL SYSTEMS
420401-05	BRIDGE APPROACH PAVEMENT
482001	BITUMINOUS SHOULDER ADJACENT TO FLEXIBLE PAVEMENT
482006-01	BITUMINOUS SHOULDER ADJACENT TO RIGID PAVEMENT
515001-02	NAME PLATE FOR BRIDGES
630001-05	STEEL PLATE BEAM GUARDRAIL
630301-03	SHOULDER WIDENING FOR TYPE 1 (SPECIAL) GUARDRAIL TERMINALS
631031-05	TRAFFIC BARRIER TERMINAL, TYPE 6
635006-02	REFLECTOR AND TERMINAL MARKER PLACEMENT
635011-01	REFLECTOR MARKER AND MOUNTING DETAILS
667101	PERMANENT SURVEY MARKERS
701006-02	OFF-ROAD OPERATIONS, 2L, 2W, 4.5 M (15') TO 600 MM (24") FROM PAVEMENT EDGE
701301-02	LANE CLOSURE, 2L, 2W, SHORT TIME OPERATIONS
701306-01	LANE CLOSURE, 2L, 2W, SLOW MOVING OPERATIONS DAY ONLY, FOR SPEEDS >= 45 MPH
701311-02	LANE CLOSURE, 2L, 2W, MOVING OPERATIONS-DAY ONLY
701321-08	LANE CLOSURE, 2L, 2W, BRIDGE REPAIR WITH BARRIER
701326-02	LANE CLOSURE, 2L, 2W, PAVEMENT WIDENING, FOR SPEEDS >= 45 MPH
702001-05	TRAFFIC CONTROL DEVICES
704001-02	TEMPORARY CONCRETE BARRIER
780001-01	TYPICAL PAVEMENT MARKINGS
781001-02	TYPICAL APPLICATIONS RAISED REFLECTIVE PAVEMENT MARKERS

PLOT DATE = 12/23/2005
FILE NAME = c:\projects\94964d\03502pa.dgn
PLOT SCALE = 28.0000 / IN.
USER NAME = teeslejack

Rev. 3-3-06

REVISIONS	
NAME	DATE

ILLINOIS DEPARTMENT OF TRANSPORTATION

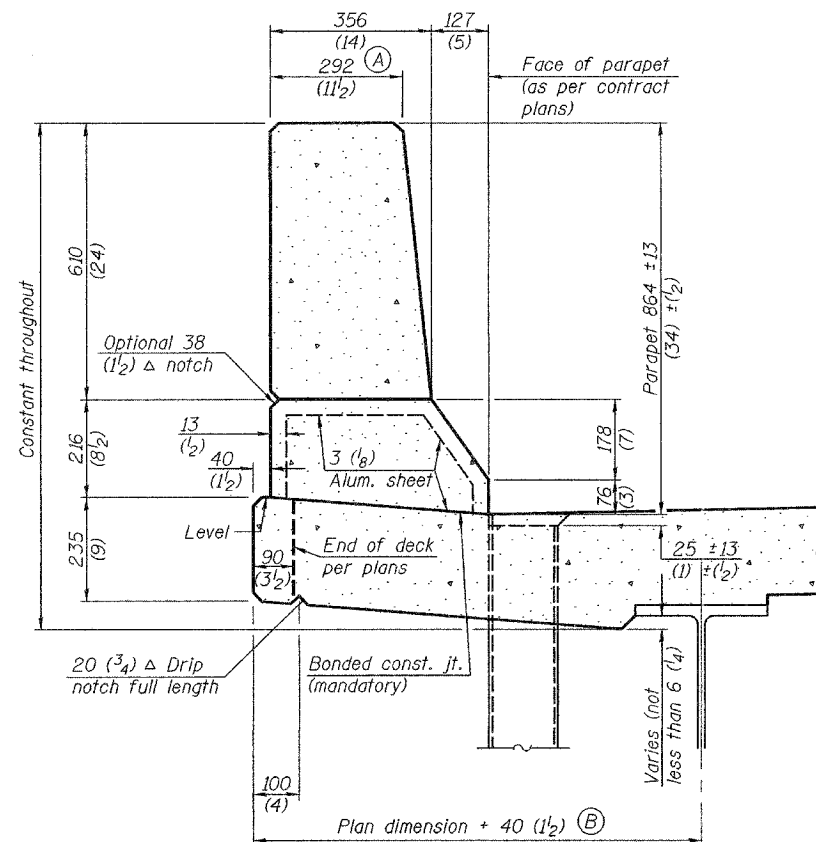
**GENERAL NOTES
AND
INDEX OF SHEETS**

SCALE: VERT. DRAWN BY
HORIZ. CHECKED BY
DATE

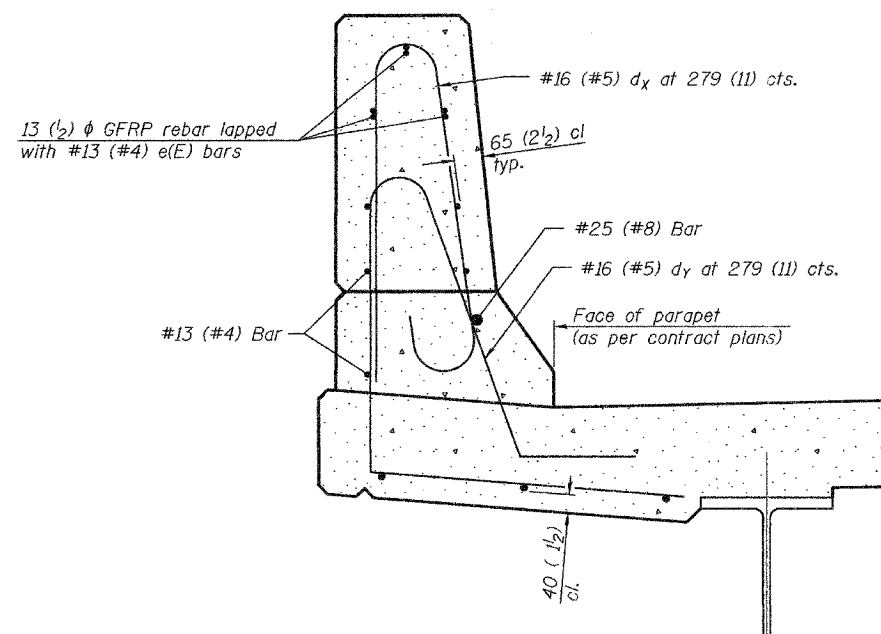
STATE OF ILLINOIS
DEPARTMENT OF TRANSPORTATION

ROUTE NO.	SECTION	COUNTY	TOTAL SHEETS	SHEET NO.	SHEET NO.
FAP 327	13B-1 13B-2	MARION	78	78a.	
FED. ROAD DIST. NO. 7	ALLIAGES	FED. AID PROJECT-			

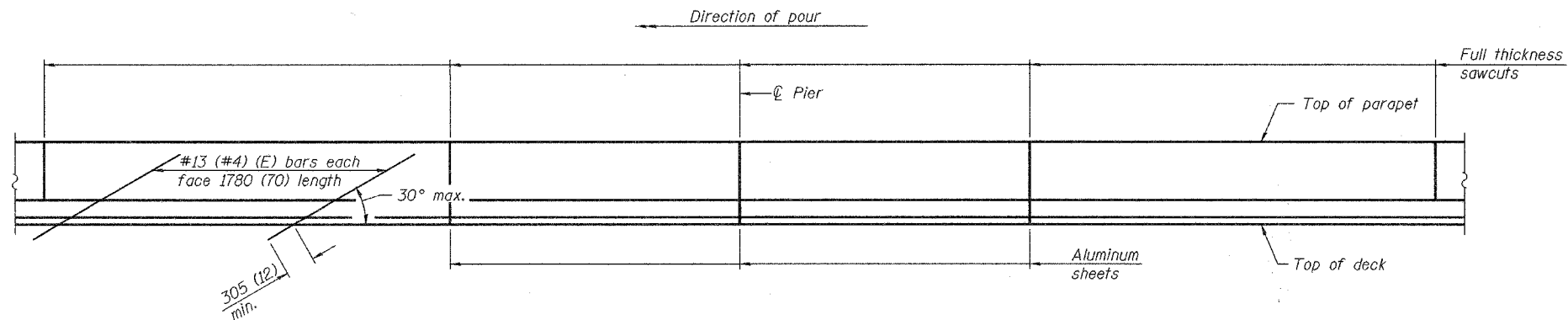
Contract #



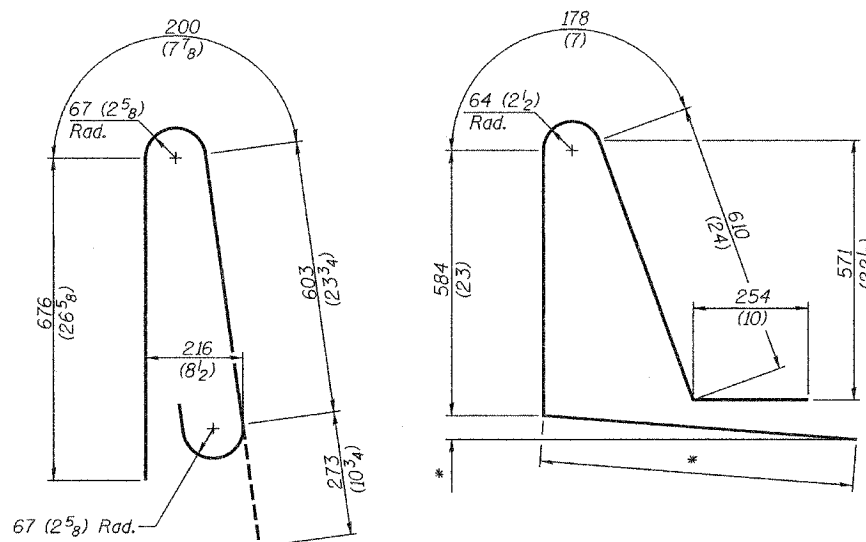
SECTION
(Showing dimensions)



SECTION
(Showing required reinforcement)

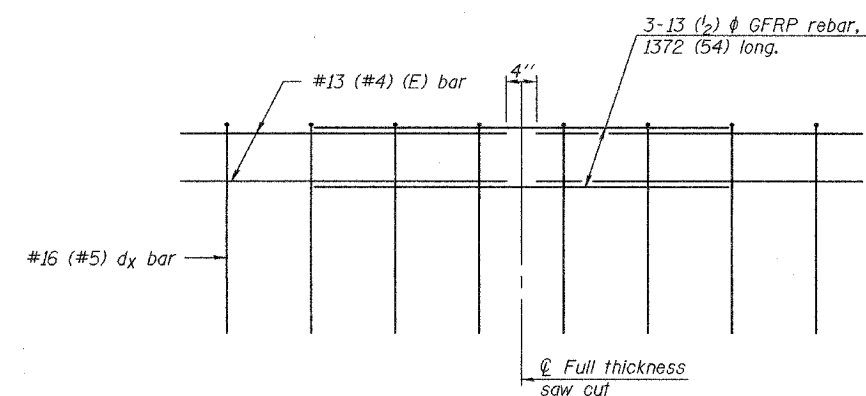


ELEVATION
(Showing parapet joints and typical stiffening reinforcement between joints)



BAR dx(e)

BAR dx(e)
* Per contract plans



GFRP REBAR STIFFENING DETAIL
(Place as shown in parapet section)

GENERAL NOTES

All dimensions shall remain the same as shown on contract plans, except dimensions A and B which are to be revised as shown to provide additional clearance. Additional concrete needed to revise dimension A and B= 0.0422 m³/m (0.165 cu. yds./ft.) of parapet. Place aluminum sheet in curb portion at and near piers. Full thickness saw cut at all other locations. Adjust/add joint locations to maintain 3 to 6 meter (10 to 20 foot) spacing.

**CONCRETE PARAPET
SLIPFORMING OPTION**

△ Added sheet 3-3-06