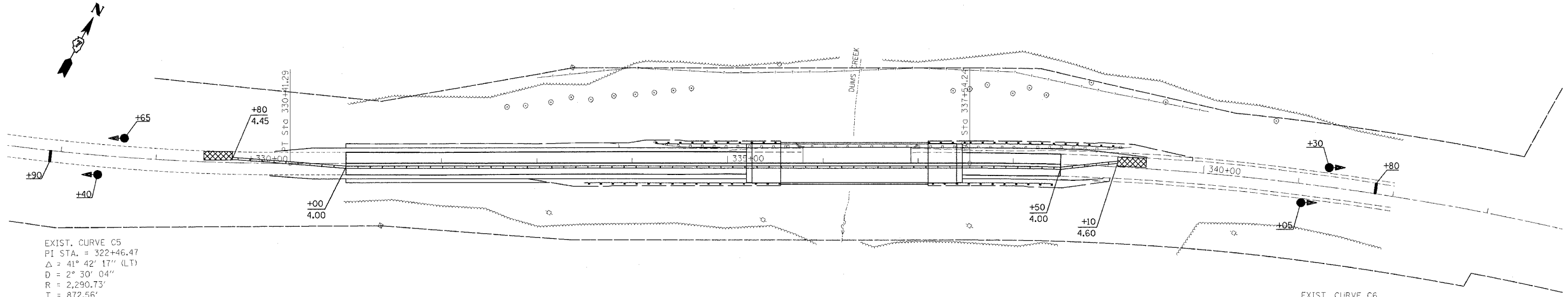


F.A.P. RTE.	SECTION	COUNTY	TOTAL SHEETS	SHEET NO.
327	13B-1&13B-2	MARION	78	15
STA.		TO STA.		
FED. ROAD DIST. NO.		ILLINOIS FED. AID PROJECT		

teastjck
 12/23/2005
 c:\projects\94964\d03502pa.dgn



EXIST. CURVE C5
 PI STA. = 322+46.47
 $\Delta = 41^\circ 42' 17''$ (LT)
 $D = 2^\circ 30' 04''$
 $R = 2,290.73'$
 $T = 872.56'$
 $L = 1,667.39'$
 $E = 160.56'$
 $e =$ MATCH EXISTING 0.0585'/FT (255' TRANSITION)
 S.E. ATTAIN: 312+03.80 - 314+58.80
 S.E. REMOVE: 329+56.19 - 332+11.19
 P.C. STA. = 313+73.90
 P.T. STA. = 330+41.29

EXIST. CURVE C6
 PI STA. = 342+35.83
 $\Delta = 19^\circ 07' 55''$ (RT)
 $D = 2^\circ 00' 18''$
 $R = 2,857.67'$
 $T = 481.59'$
 $L = 954.22'$
 $E = 40.30'$
 $e =$ MATCH EXISTING 0.0300'/FT
 $T.R. = 40.00'$
 S.E. RUN = STA. 336+70.50 TO STA. 338+50.00*
 *MATCH EXISTING CROSS SLOPES AT THIS LOCATION.
 P.C. STA. = 337+54.24
 P.T. STA. = 347+08.46

RELOCATE TEMPORARY CONCRETE BARRIER

STA 329+80 to 331+00 = 120 FT
 STA 331+00 to 338+50 = 750 FT
 STA 338+50 to 339+10 = 60 FT
 TOTAL = 930 FT

IMPACT ATTENUATORS, RELOCATE (NON-REDIRECTIVE), TEST LEVEL 3

STA 329+80 = 1 EACH
 STA 339+10 = 1 EACH
 TOTAL = 2 EACH

GUARDRAIL REMOVAL

LT STA 334+22.54 to 339+23.15 = 502.5 FT

PAVEMENT REMOVAL

LT STA 335+19.50 to 335+79 = 106 SQ YD
 LT STA 336+92 to 337+46.50 = 96 SQ YD
 TOTAL = 202 SQ YD

BRIDGE APPROACH PAVEMENT

LT STA 335+25.50 to 335+55.50 = 68.25 SQ YD
 LT STA 337+10.50 to 337+40.50 = 68.25 SQ YD
 TOTAL = 136.50 SQ YD

BRIDGE APPROACH PAVEMENT CONNECTOR (FLEXIBLE)

LT STA 335+19.50 to 335+25.50 = 13.75 SQ YD
 LT STA 337+40.50 to 337+46.50 = 13.75 SQ YD
 TOTAL = 27.50 SQ YD

BITUMINOUS SHOULDERS SUPERPAVE

LT STA 331+00.00 TO 335+55.50 = 186 TONS
 LT STA 337+10.50 TO 339+87.00 = 87 TONS
 TOTAL = 273 TONS

TRAFFIC BARRIER TERMINAL, TYPE 6

WB APPROACH = 1 EACH
 WB DEPARTURE = 1 EACH
 TOTAL = 2 EACH

STEEL PLATE BEAM GUARD RAIL, TYPE A

WB APPROACH = 125 FT
 WB DEPARTURE = 50 FT
 TOTAL = 175 FT

TRAFFIC BARRIER TERMINAL, TYPE 1, SPECIAL (TANGENT)

WB APPROACH = 1 EACH
 WB DEPARTURE = 1 EACH
 TOTAL = 2 EACH

GUARDRAIL MARKERS, TYPE A

WB APPROACH = 2 EACH
 WB DEPARTURE = 1 EACH
 TOTAL = 3 EACH

BARRIER WALL MARKERS, TYPE B

NORTH PARAPET WALL = 2 EACH

PERIMETER EROSION BARRIER

LT STA 333+00 to 335+50 = 250 FT
 LT STA 337+25 to 339+25 = 200 FT
 TOTAL = 450 FT

TEMPORARY EROSION CONTROL SEEDING

LT SIDE = 25 POUNDS

TEMPORARY DITCH CHECKS

NE QUADRANT = 1 EACH
 NW QUADRANT = 1 EACH
 TOTAL = 2 EACH

LEGEND

- TEMPORARY IMPACT ATTENUATORS
- TEMPORARY BRIDGE TRAFFIC SIGNALS

STAGE II NOTES

- RELOCATE TEMPORARY CONCRETE BARRIER, IMPACT ATTENUATORS, ETC. ACCORDING TO TRAFFIC CONTROL PLAN.
- REMOVE STAGE II PORTION OF EXISTING STRUCTURE AND GUARDRAIL.
- CONSTRUCT STAGE II PORTION OF NEW STRUCTURE.
- CONSTRUCT STAGE II EMBANKMENT, BRIDGE APPROACH PAVEMENT, AND BRIDGE APPROACH PAVEMENT CONNECTOR.
- CONSTRUCT STAGE II BINDER AND SURFACE. CONSTRUCT STAGE II BITUMINOUS SHOULDERS, AGGREGATE SHOULDERS, AND GUARDRAIL.
- REMOVE TEMPORARY CONCRETE BARRIER AND IMPACT ATTENUATORS.
- PLACE FINAL PAVEMENT MARKINGS, SEEDING, AND PERFORM OTHER WORK NECESSARY TO COMPLETE THIS SECTION.

REVISIONS	
NAME	DATE

ILLINOIS DEPARTMENT OF TRANSPORTATION

STAGE II CONSTRUCTION DUMS CREEK

SCALE: VERT. _____
HORIZ. _____

DATE _____ DRAWN BY _____
CHECKED BY _____

PLOT DATE = 12/23/2005
 FILE NAME = c:\projects\94964\d03502pa.dgn
 PLOT SCALE = 1/8"=1'-0"
 USER NAME = teastjck