

STATE OF ILLINOIS
DEPARTMENT OF TRANSPORTATION

ROUTE NO.	SECTION	COUNTY	TOTAL SHEETS	SHEET NO.	SHEET NO. 2 17 SHEETS
FAP Rte. 327	13B-E	MARION	78	19	
FED. ROAD DIST. NO. 7	ILLINOIS	FED. AID PROJECT			

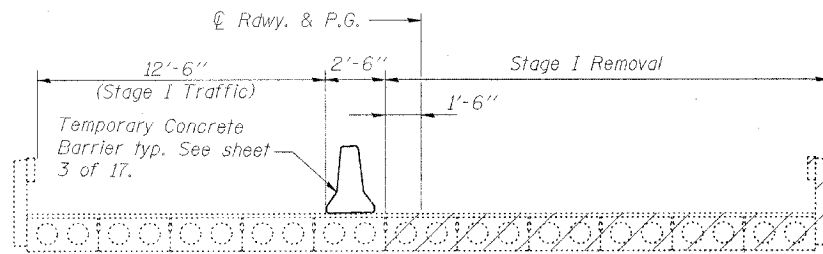
Contract #94964

INDEX OF SHEETS

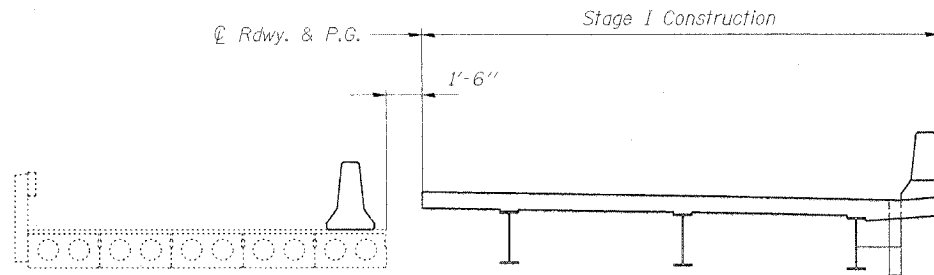
- 1 General Plan
- 2 Stage Construction Details
- 3 Temporary Concrete Barrier for Stage Construction
- 4-5 Top of Slab Elevations
- 6 Superstructure
- 7 Superstructure Details
- 8 Diaphragm Details
- 9 Steel Framing Plan
- 10 Structural Steel Details
- 11 Anchor Bolt Details for Bearings
- 12 West Abutment
- 13 East Abutment
- 14 Pier 1
- 15 Pier 2
- 16 Bar Splicer Assembly Details
- 17 Boring Logs

TOTAL BILL OF MATERIAL

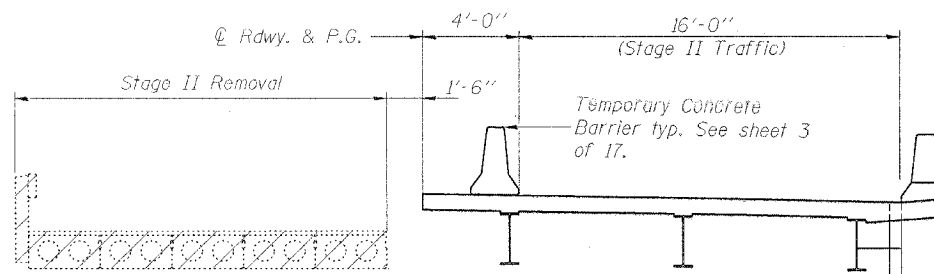
ITEM	UNIT	SUPER	SUB	TOTAL
Removal of Existing Structures	Each			1
Porous Granular Embankment (Special)	Cu. Yd.		118	118
Structure Excavation	Cu. Yd.		374	374
Concrete Structures	Cu. Yd.		136.0	136.0
Concrete Superstructure	Cu. Yd.	219.7		219.7
Bridge Deck Grooving	Sq. Yd.	654		654
Protective Coat	Sq. Yd.	818		818
Name Plates	Each	1		1
Floor Drains	Each	14		14
Furnishing and Erecting Structural Steel	L. Sum	0.32		0.32
Stud Shear Connectors	Each	3012		3012
Reinforcement Bars, Epoxy Coated	Pound	55,740	11,530	67,270
Bar Splicers	Each	589	92	681
Furnishing Steel Piles HP (12x74)	Foot		1218	1218
Driving Steel Piles	Foot		1218	1218
Test Piles Steel HP (12x74)	Each		4	4
Temporary Soil Retention System	Sq. Ft.		625	625
Underwater Structure Excavation Protection, Location 1	Each		1	1
Underwater Structure Excavation Protection, Location 2	Each		1	1
Stone Riprap, Class A4	Sq. Yd.		1563	1563
Filter Fabric	Sq. Yd.		1563	1563
Pipe Underdrains for Structures 4"	Foot		144	144
Geocomposite Wall Drain	Sq. Yd.		72	72



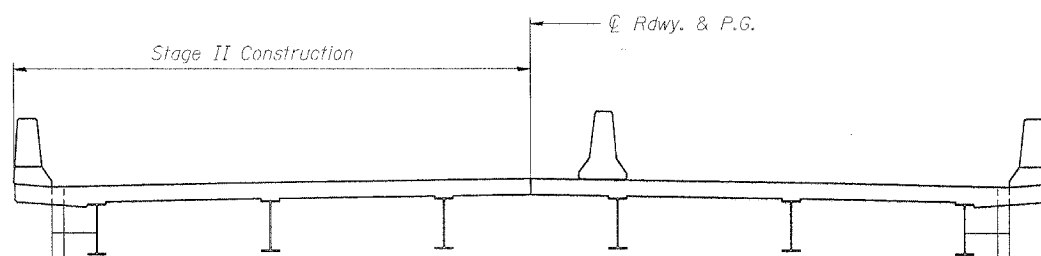
STAGE I REMOVAL



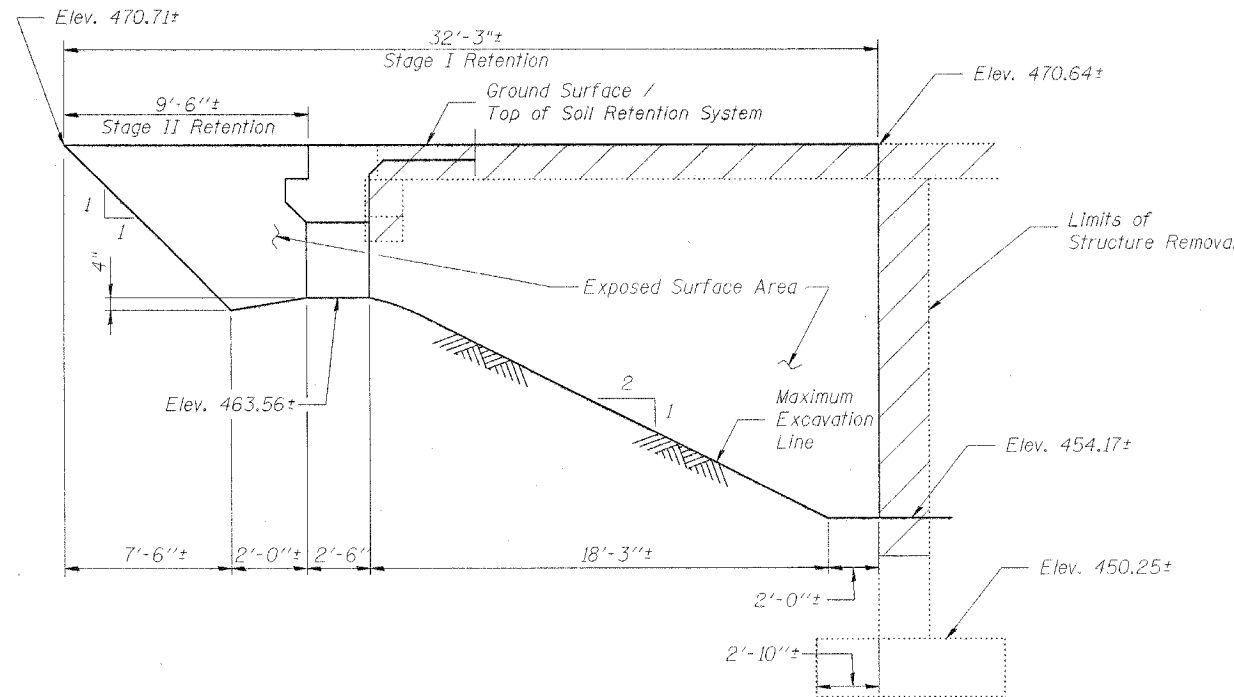
STAGE I CONSTRUCTION



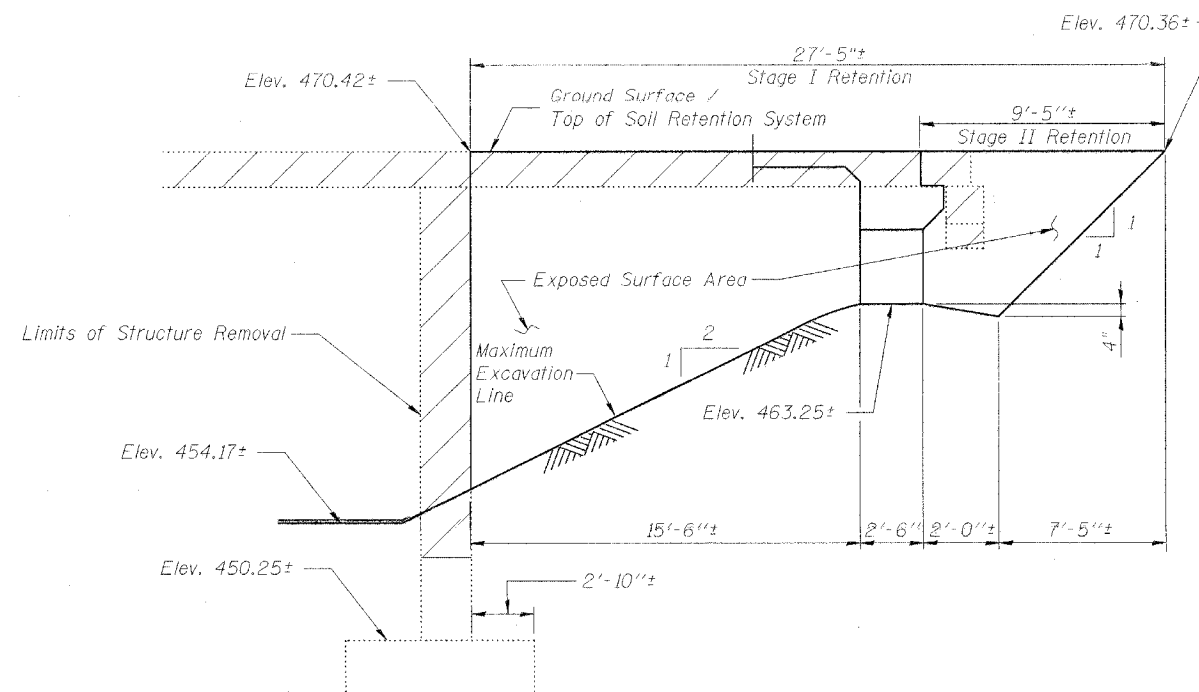
STAGE II REMOVAL



STAGE II CONSTRUCTION



TEMPORARY SOIL RETENTION SYSTEM AT W. ABUT



TEMPORARY SOIL RETENTION SYSTEM AT E. ABUT

DESIGNED	PRT
CHECKED	MAB
DRAWN	PRT
CHECKED	MAB

HORNER & SHIFRIN, INC.
ENGINEERS ■ ARCHITECTS ■ PLANNERS

Notes:
All staging sections are taken looking east.
For quantity of Temporary Concrete Barrier, see rdwy. plans
Hatched area indicates Removal of Existing Structures.

Note: A cantilevered sheet piling design does not appear feasible and additional members or other retention systems may be necessary. The Contractor shall submit a temporary soil retention system design including plan details and calculations for review and acceptance by the Engineer.

STAGE CONSTRUCTION DETAILS
F.A.P. ROUTE 327 - SEC. 13B-2
MARION COUNTY
STATION 336+33.00
STRUCTURE NO. 061-0090