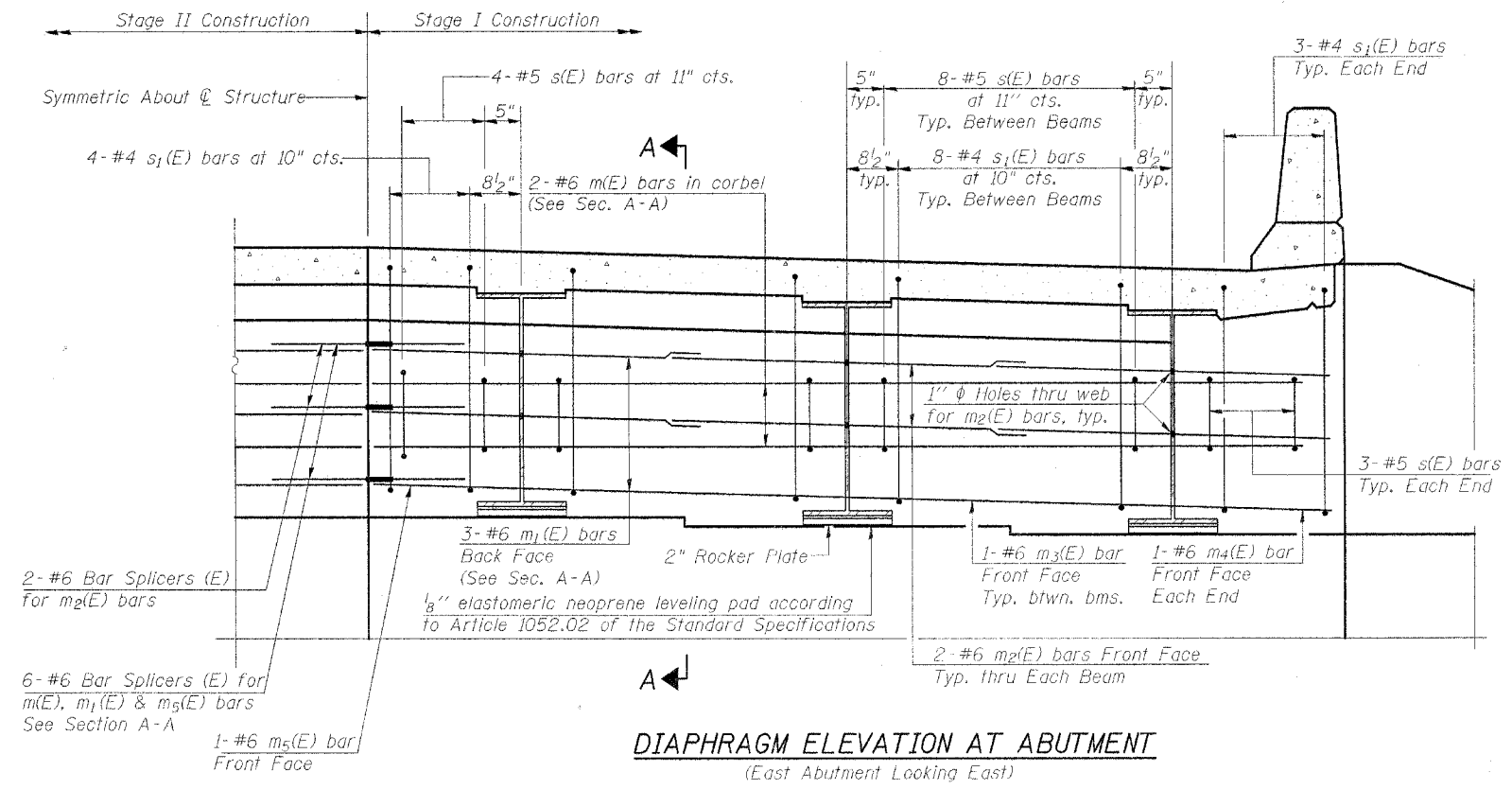


STATE OF ILLINOIS  
DEPARTMENT OF TRANSPORTATION

ROUTE NO.	SECTION	COUNTY	TOTAL SHEETS	SHEET NO.	SHEET NO. 8
FAP Rte. 327	13B-2	Marion	78	25	17 SHEETS
FED. ROAD DIST. NO. 7	ILLINOIS	FED. AID PROJECT			

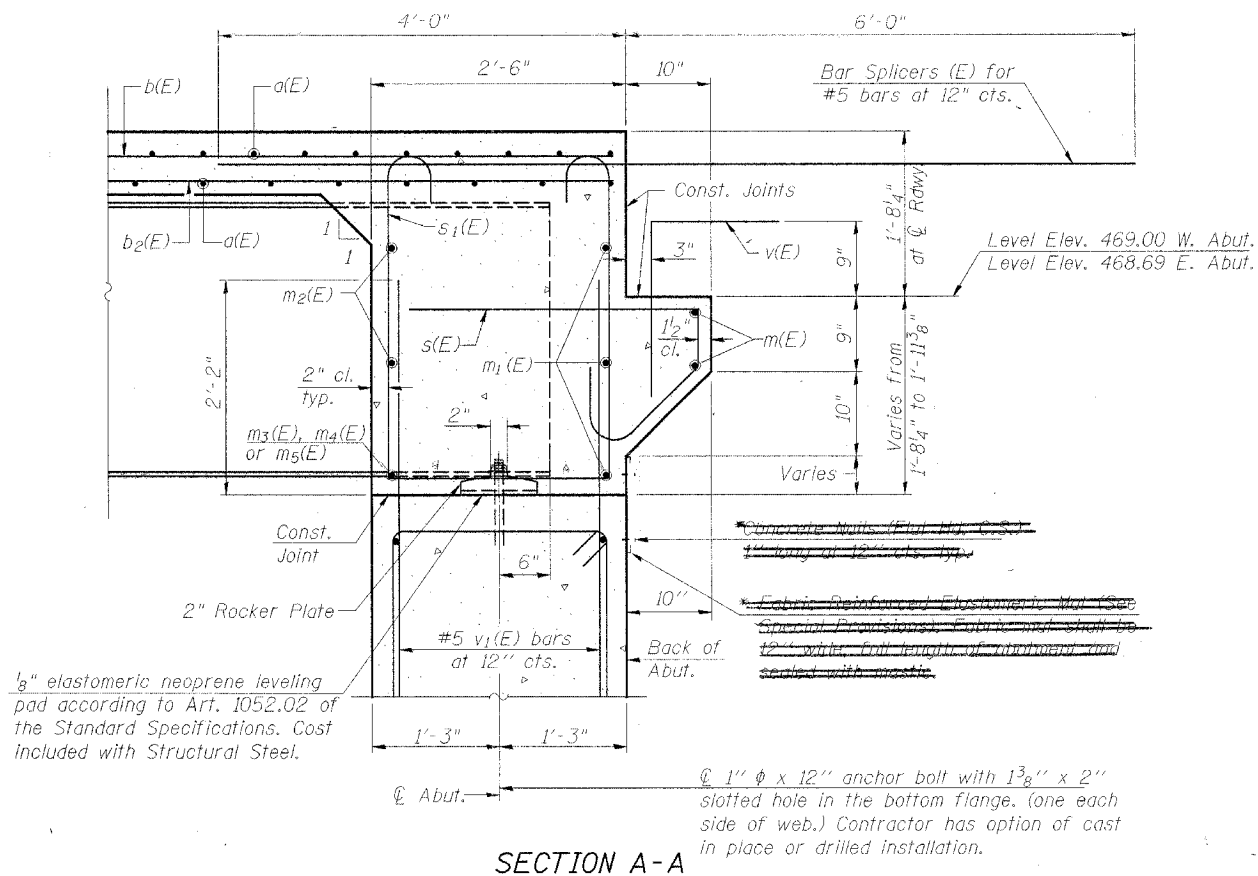
Contract #94964



**DIAPHRAGM ELEVATION AT ABUTMENT**  
(East Abutment Looking East)

**NOTES**  
Reinforcement bars in diaphragm are billed with superstructure on sheet 7 of 17.  
Concrete in diaphragm is included with Concrete Superstructure on sheet 7 of 17.  
For details of bars s(E) & s1(E) see sheet 7 of 17.  
For anchor bolt details see sheet 11 of 17.

**MIN. BAR LAP**  
#6 bar = 2'-9"



**SECTION A-A**

DESIGNED	-
CHECKED	-
DRAWN	TFG
CHECKED	CME/BD/MCB

**COOMBE-BLOXDORF, P.C.**  
Engineers/Land Surveyors  
Springfield, Illinois  
Design Firm License No. 184-002703

**DIAPHRAGM DETAILS**  
F.A.P. ROUTE 327 - SEC. 13B-2  
MARION COUNTY  
STATION 336+33.00  
STRUCTURE NO. 061-0090