

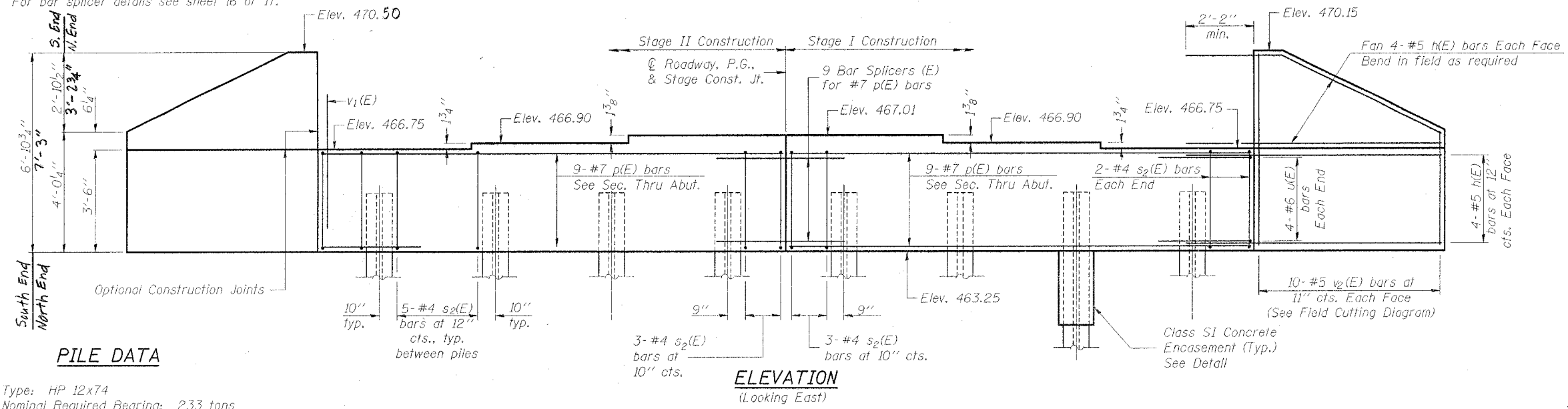
Notes: Four steps monolithically with cap.
 Reinforcement bars designated (E)
 shall be epoxy coated.
 Space reinforcement in cap to miss anchor bolts.
 For anchor bolt installation details, see sheet 11 of 17.
 For bar splicer details see sheet 16 of 17.

STATE OF ILLINOIS
 DEPARTMENT OF TRANSPORTATION

ROUTE NO.	SECTION	COUNTY	TOTAL SHEETS	SHEET NO.
FAP Rte. 327	13B-2	MARION	18	30
FED. ROAD DIST. NO. 7	ILLINOIS	FED. AID PROJECT		

SHEET NO. 13
 17 SHEETS

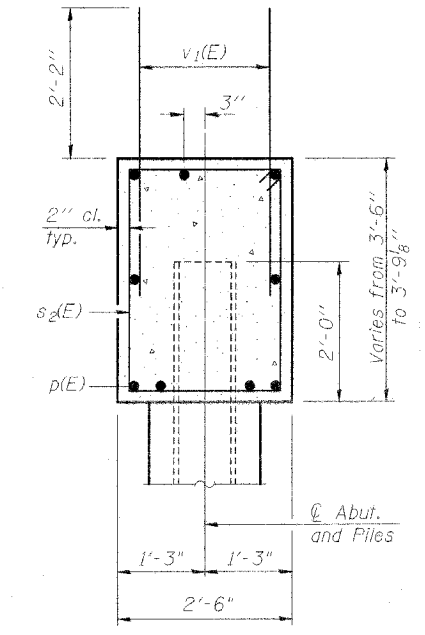
Contract #94964



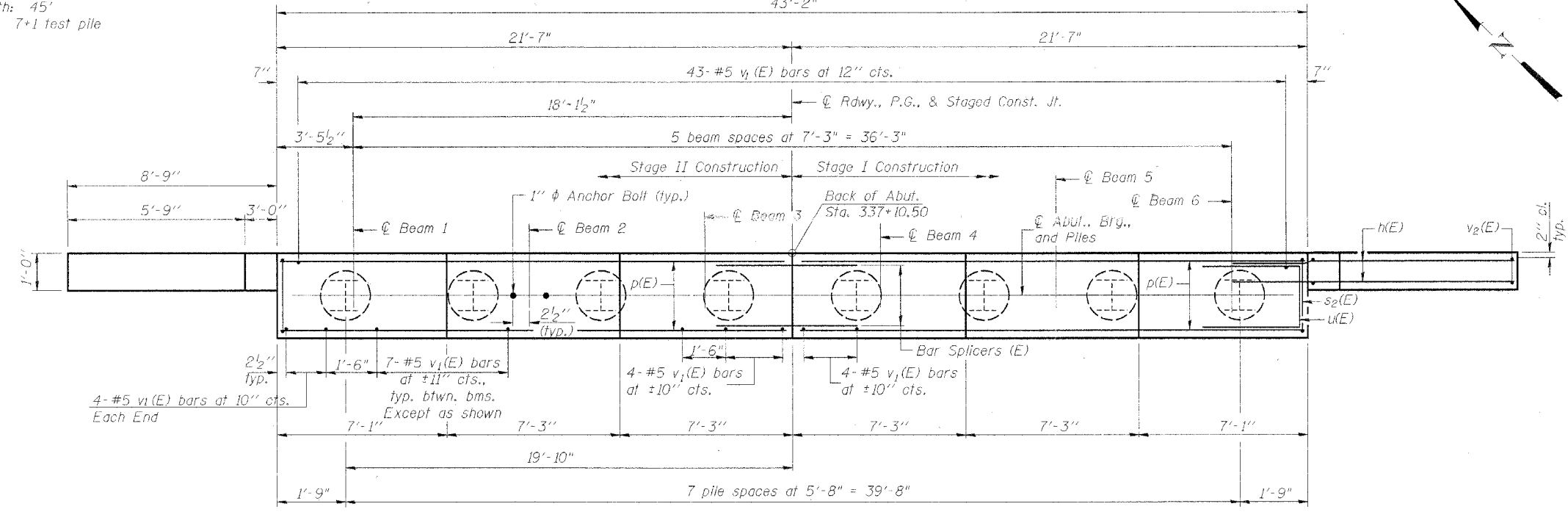
PILE DATA

Type: HP 12x74
 Nominal Required Bearing: 233 tons
 Nominal Design Capacity: 116 tons
 Est. Length: 45'
 No. Req'd: 7+1 test pile

ELEVATION
 (Looking East)



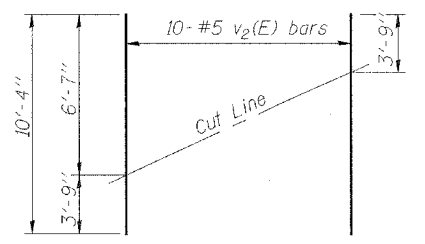
SEC. THRU ABUT.



PLAN

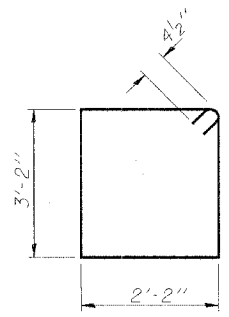
BILL OF MATERIAL

Bar	No.	Size	Length	Shape
h(E)	32	#5	11'-4"	—
p(E)	18	#7	21'-4"	—
s2(E)	40	#4	11'-5"	□
u(E)	8	#6	9'-2"	—
v1(E)	87	#5	4'-4"	—
v2(E)	20	#5	10'-4"	—
Concrete Structures				
		Cu. Yd.	18.4	
Reinforcement Bars, Epoxy Coated				
		Pound	2190	
Structure Excavation				
		Cu. Yd.	95	
Test Pile Steel				
		Each	1	
Furnishing Steel Piles				
		Foot	315	
Driving Steel Piles				
		Foot	315	

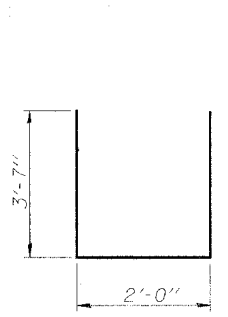


FIELD CUTTING DIAGRAM

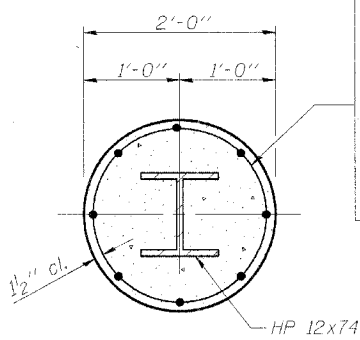
Order v2(E) full length. Cut as shown and use remainder of bars in opposite face.



BAR s2(E)

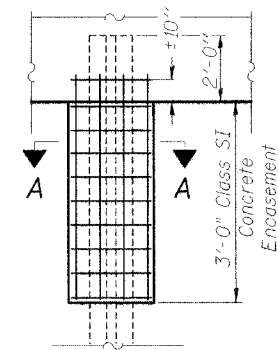


BAR u(E)



SECTION A-A

Welded wire fabric 6 x 6-W4.0 x W4.0 weighing 58#/100 sq. ft. The cost of Excavation, Concrete Encasement, and Reinforcement is included with Furnishing Piles. Forms for Encasement may be omitted when soil conditions permit.



PILE ENCASEMENT DETAIL

DESIGNED	PRT
CHECKED	MAB
DRAWN	PRT
CHECKED	MAB

HORNER & SHIFRIN, INC.
 ENGINEERS ■ ARCHITECTS ■ PLANNERS

EAST ABUTMENT
 F.A.P. ROUTE 327 - SEC. 13B-2
 MARION COUNTY
 STATION 336+33.00
 STRUCTURE NO. 061-0090