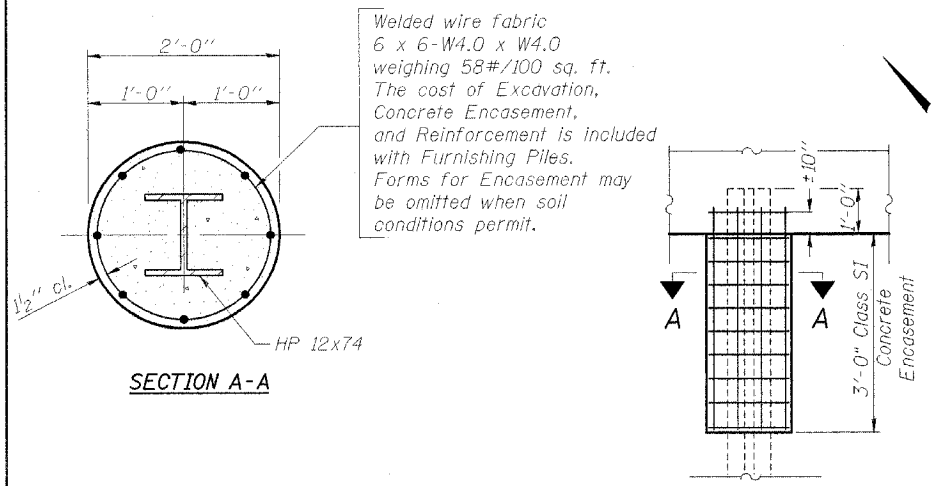


STATE OF ILLINOIS
DEPARTMENT OF TRANSPORTATION

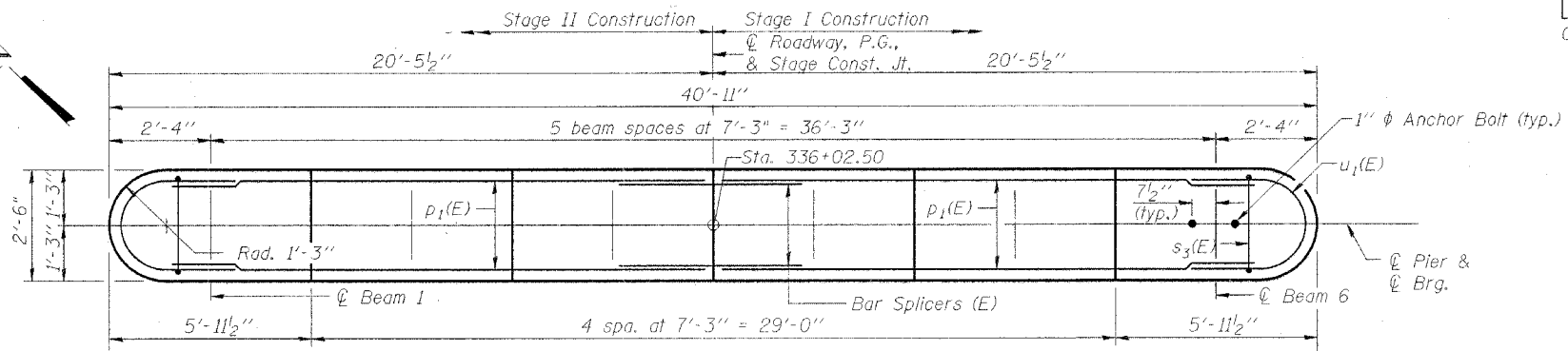
ROUTE NO.	SECTION	COUNTY	SHEETS	SHEET NO.
FAP Rte. 327	13B-2	Marion	78	31
FED. ROAD DIST. NO. 7		ILLINOIS FED. AID PROJECT-		

Contract #94964

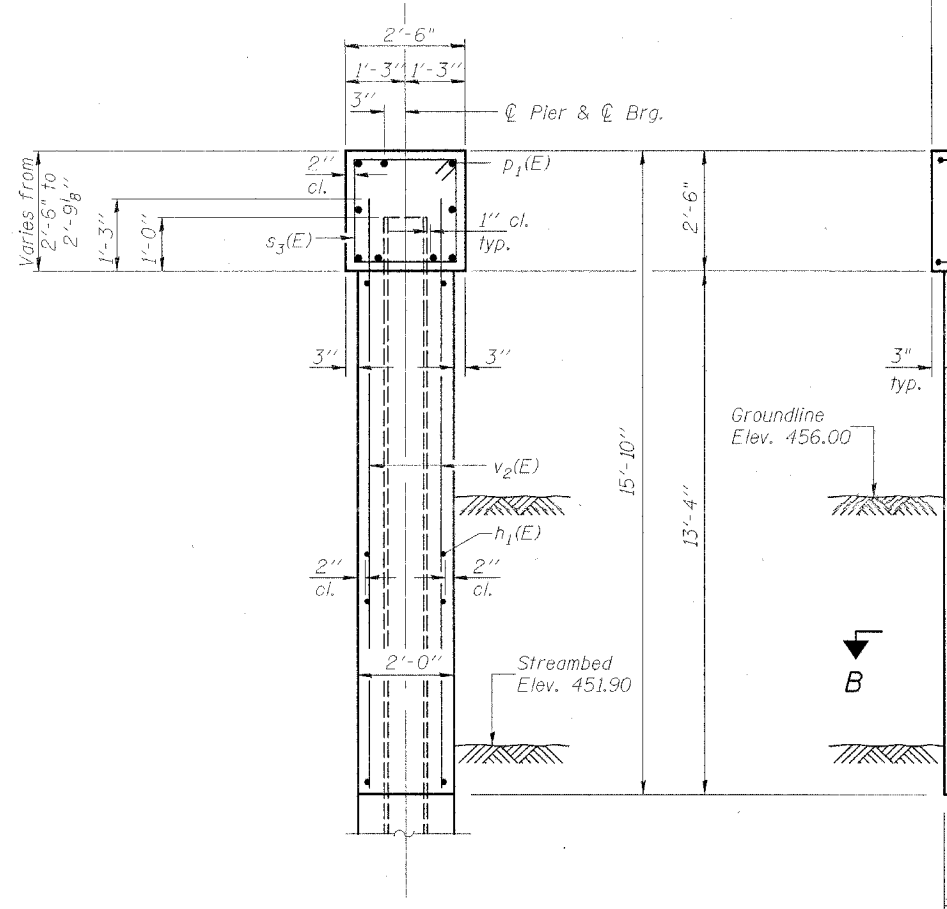
SHEET NO. 14
17 SHEETS



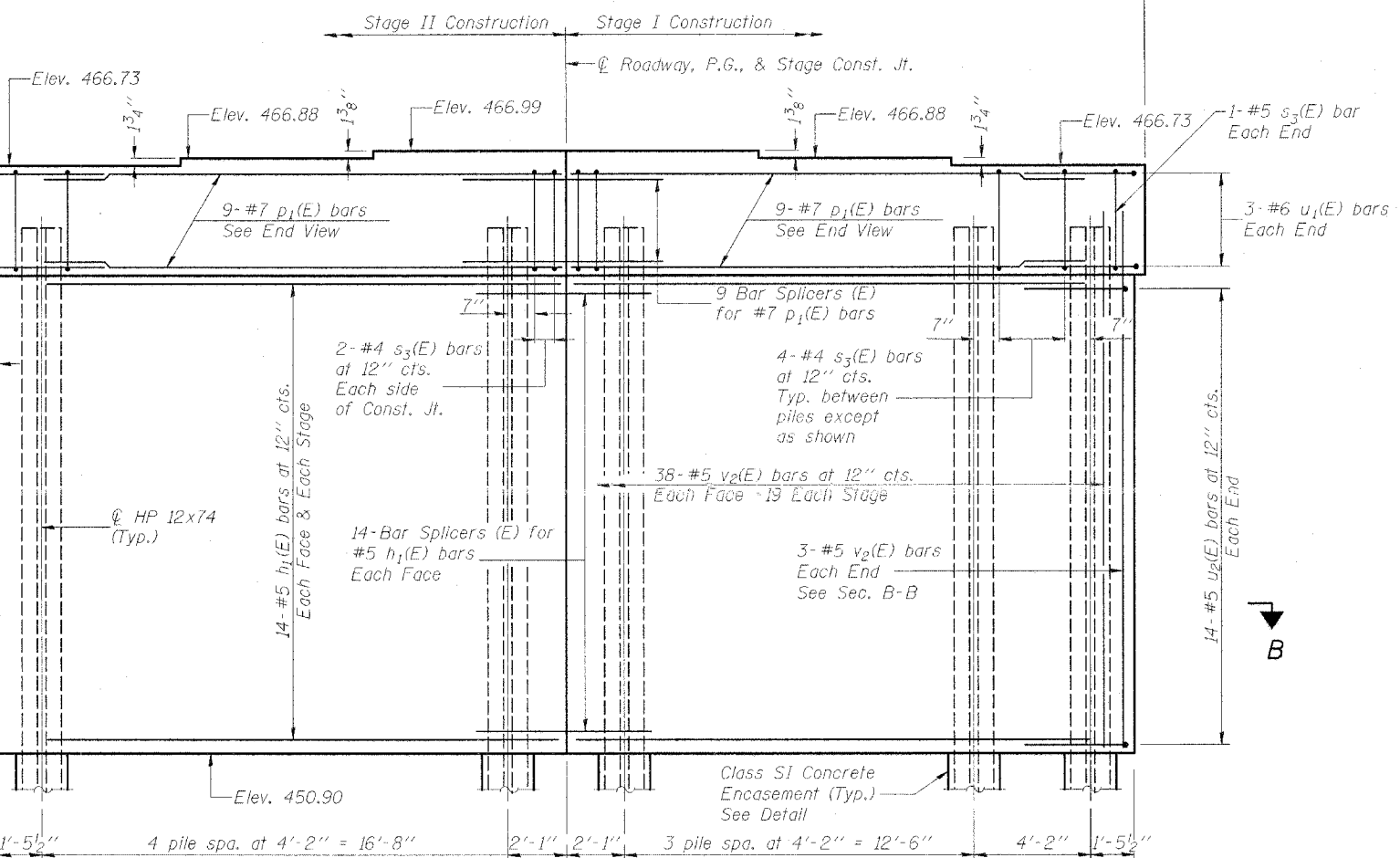
PILE ENCASEMENT DETAIL



TOP PLAN



END VIEW



ELEVATION (Looking East)

Notes:
Space reinforcement in cap to miss anchor bolts.
Pour steps monolithically with cap.
For anchor bolt installation details, see sheet 11 of 17.
For bar splicer details see sheet 16 of 17.

PILE DATA

Type: HP 12x74
Nominal Required Bearing: 294 tons
Nominal Design Capacity: 180 tons
Est. Length: 36'
No. Req'd: 9+1 test pile

DESIGNED	MAB
CHECKED	PRT
DRAWN	PRT
CHECKED	MAB

HORNER & SHIFRIN, INC.
ENGINEERS ■ ARCHITECTS ■ PLANNERS

BILL OF MATERIAL

Bar	No.	Size	Length	Shape
h ₁ (E)	56	#5	19'-1"	—
p ₁ (E)	18	#7	19'-1"	—
s ₃ (E)	38	#4	9'-5"	□
u ₁ (E)	6	#6	8'-4"	⊂
u ₂ (E)	28	#5	7'-0"	⊂
v ₂ (E)	82	#5	14'-6"	—
Concrete Structures		Cu. Yd.	49.8	
Reinforcement Bars, Epoxy Coated		Pound	3580	
Structure Excavation		Cu. Yd.	.92	
Test Pile Steel HP12x74		Each	1	
Furnishing Steel Piles HP12x74		Foot	324	
Driving Steel Piles		Foot	324	
Underwater Structure Excavation Protection-Location 1		Each	1	

Reinforcement Bars designated (E) shall be epoxy coated.

PIER 1
F.A.P. ROUTE 327 - SEC. 13B-2
MARION COUNTY
STATION 336+33.00
STRUCTURE NO. 061-0090