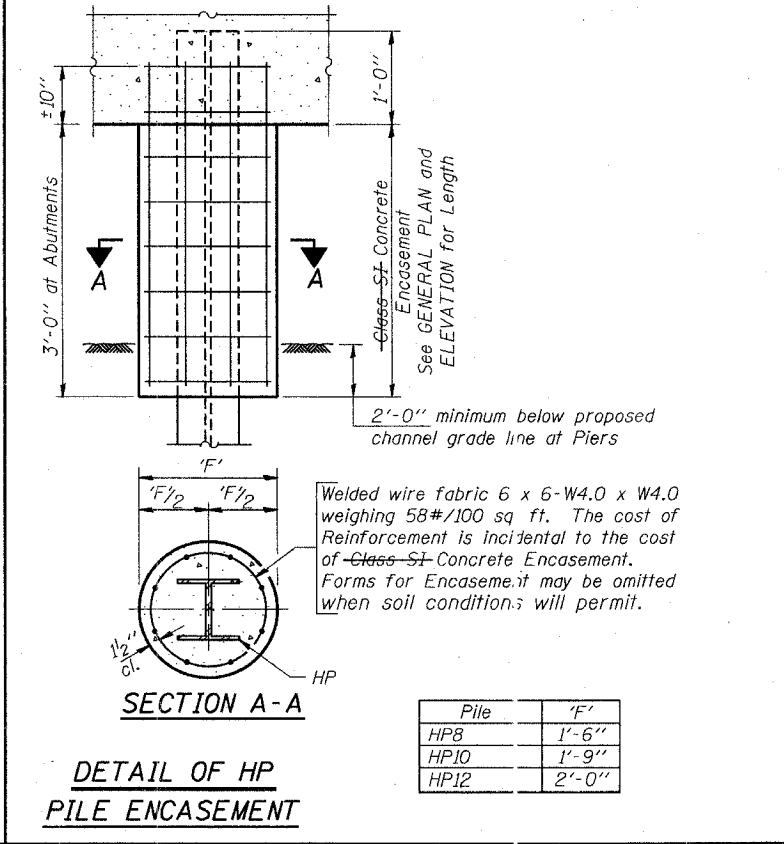
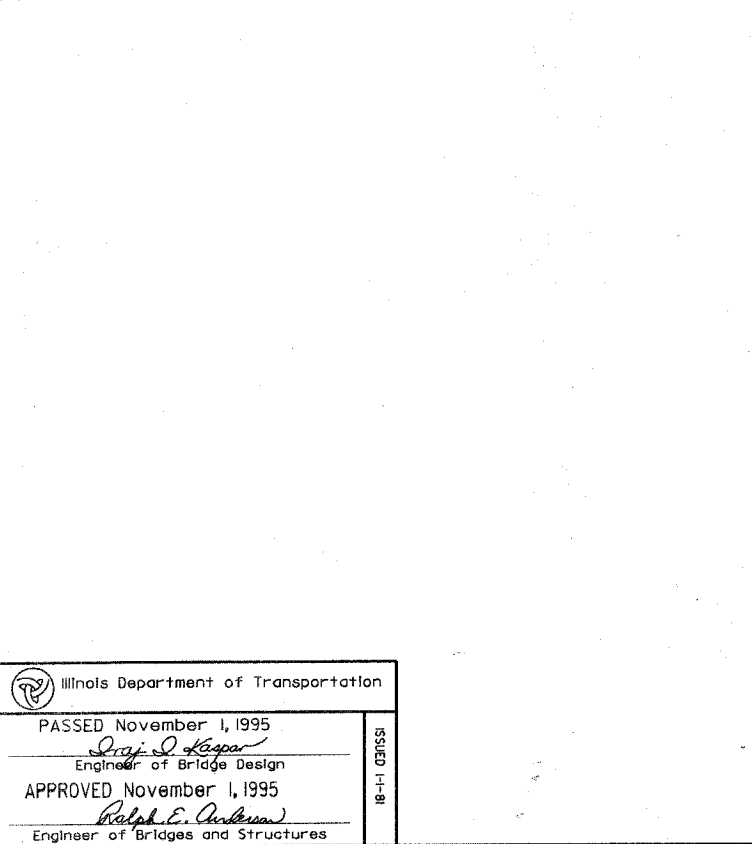
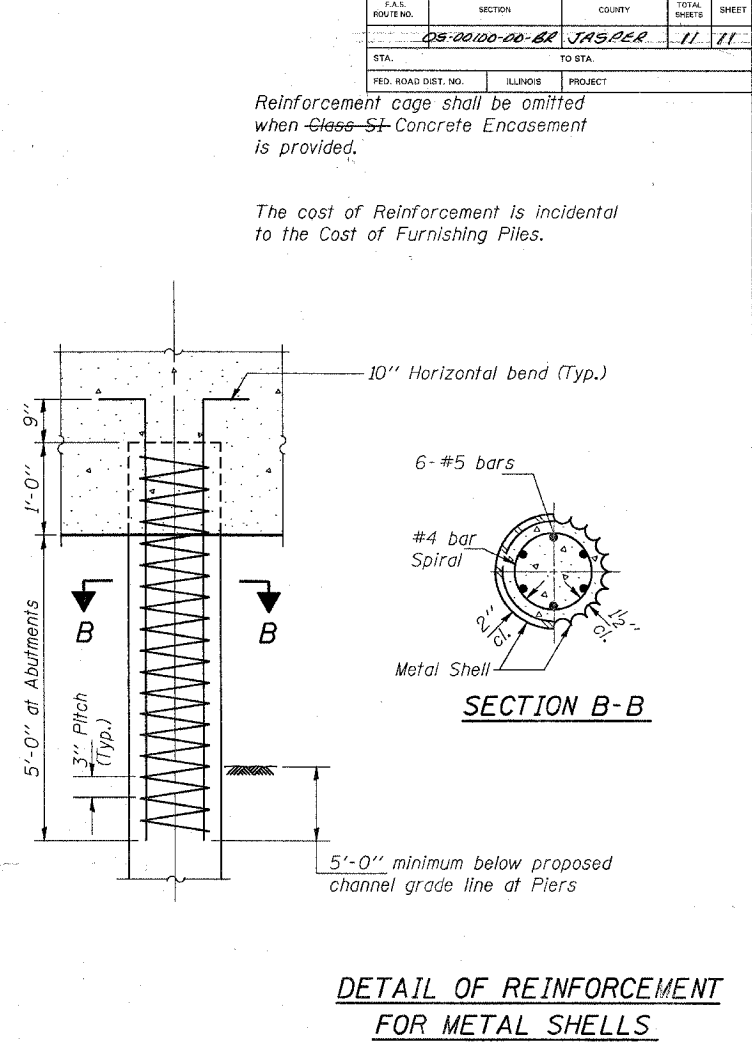
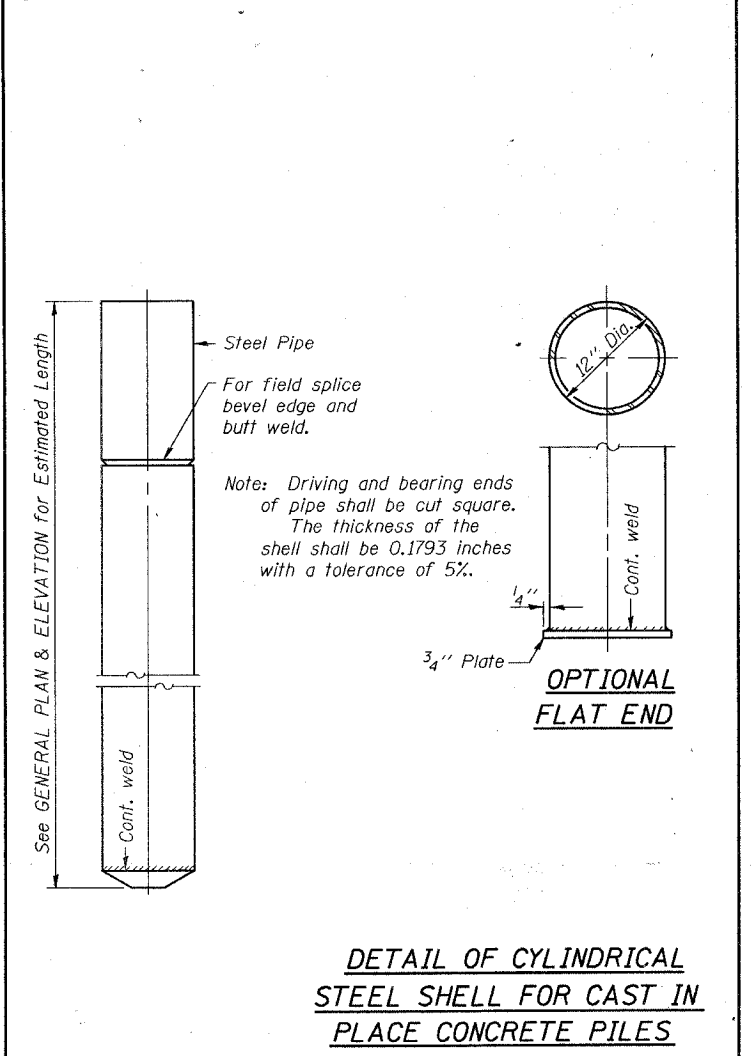
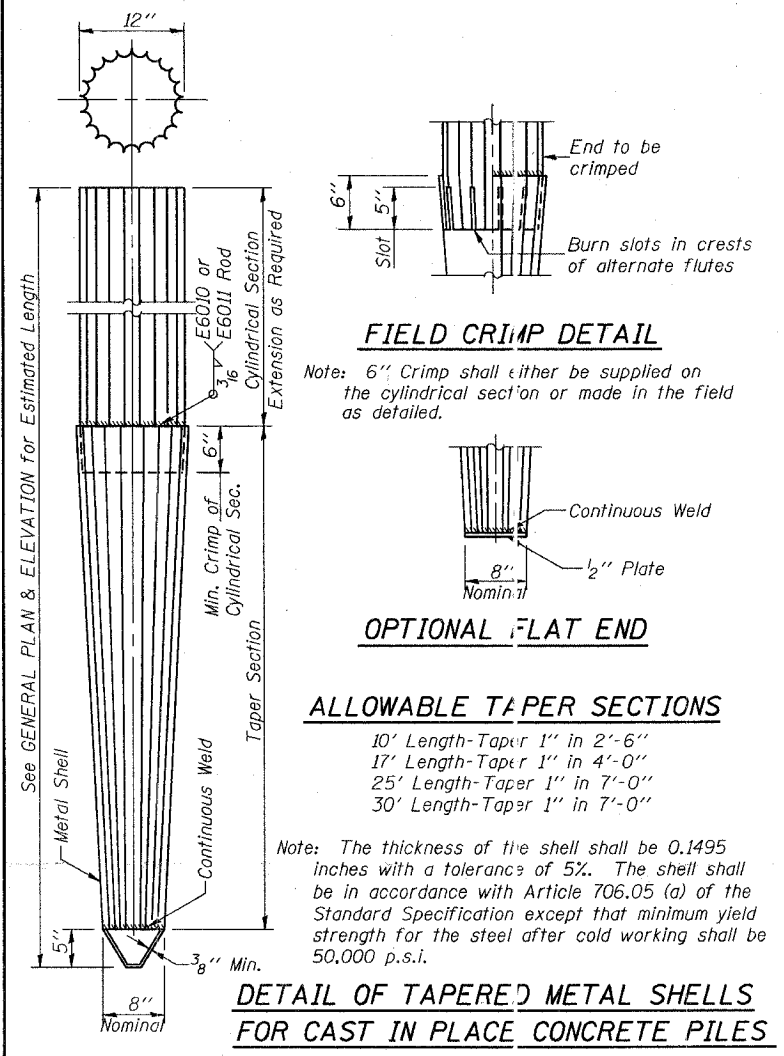
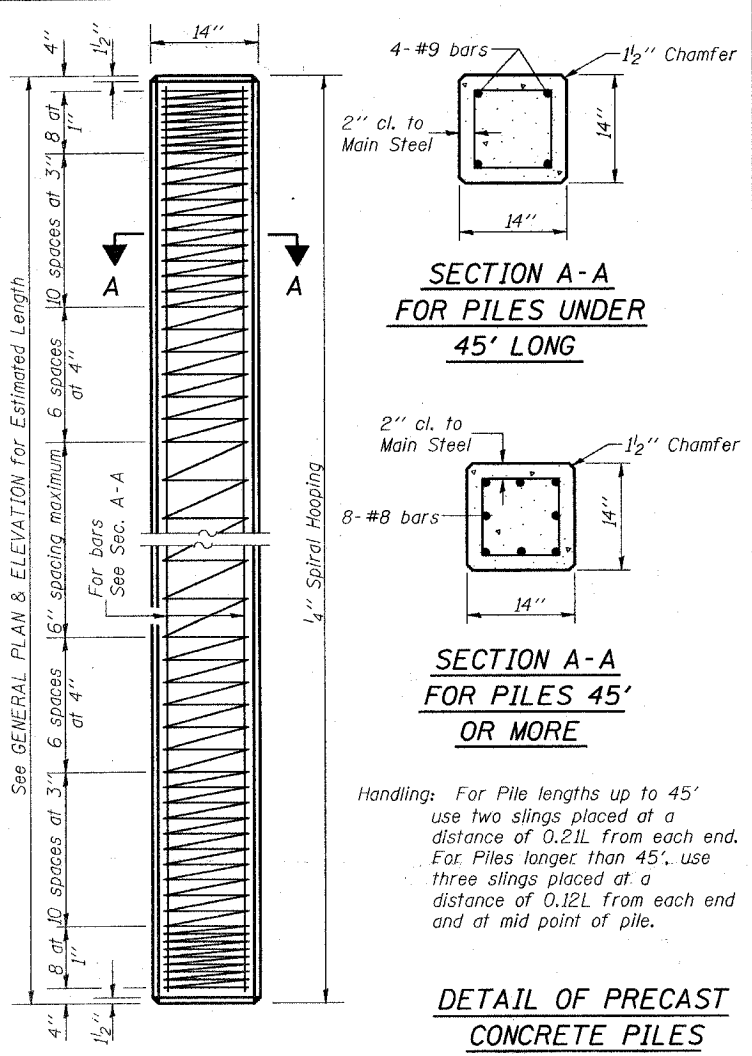


F.A.S. ROUTE NO.	SECTION	COUNTY	TOTAL SHEETS	SHEET
05-0000-00-02	JASPER		11	11
STA.	TO STA.			
FED. ROAD DIST. NO.	ILLINOIS	PROJECT		

Reinforcement cage shall be omitted when Class ~~SI~~ Concrete Encasement is provided.

The cost of Reinforcement is incidental to the Cost of Furnishing Piles.



QUANTITIES/LIN. FT. OF ENCASEMENT

(STEEL PILES)

Pile Size	Item	Quantity
HP8	Class SI Concrete Encasement	0.063 C.Y.
HP10	Class SI Concrete Encasement	0.086 C.Y.
HP12	Class SI Concrete Encasement	0.112 C.Y.

(METAL SHELL PILES)

Pile Size	Item	Quantity
12" Dia.	Class SI Concrete Encasement	0.087 C.Y.

Illinois Department of Transportation

PASSED November 1, 1995

Greg J. Kasper
Engineer of Bridge Design

APPROVED November 1, 1995

Ralph E. Anderson
Engineer of Bridges and Structures

PILE DETAILS

STANDARD CX-1