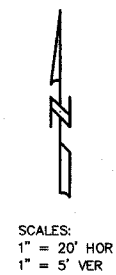


ROUTE	SECTION	COUNTY	TOTAL SHEETS	SHEET NO.
F.A.S. 801	03-00110-00-BR	RICHLAND	13	3
CONTRACT NO. 95456		ILLINOIS	PROJECT BR5-801(228)	



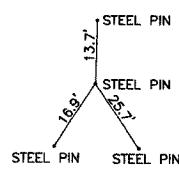
STA. 3+00.00 PROPOSED STRUCTURE NO. 080-3210
THREE SPAN PRECAST PRESTRESSED CONCRETE DECK BEAM BRIDGE
181'-6" BK.-BK. ABUTMENTS
STEEL H PILE / SPILLTHROUGH ABUTMENTS
STEEL H PILE PIERS
28" DECK
EXIST. STRUCTURE NO. 080-3007
PROP. STRUCTURE NO. 080-3210

SHAPE EXIST. DITCH TO DRAIN
EXCAV. QUANTITY INCLUDED
IN CHANNEL EXCAVATION

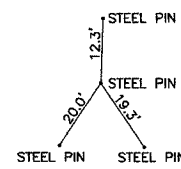
SHAPE EXIST. DITCH TO DRAIN
EXCAV. QUANTITY INCLUDED
IN CHANNEL EXCAVATION

POWER LINE
NORRIS ELECTRIC CO-OP
NEWTON, ILLINOIS
PH. 618-783-8765

TIES P.O.T. STA. 1+50.00



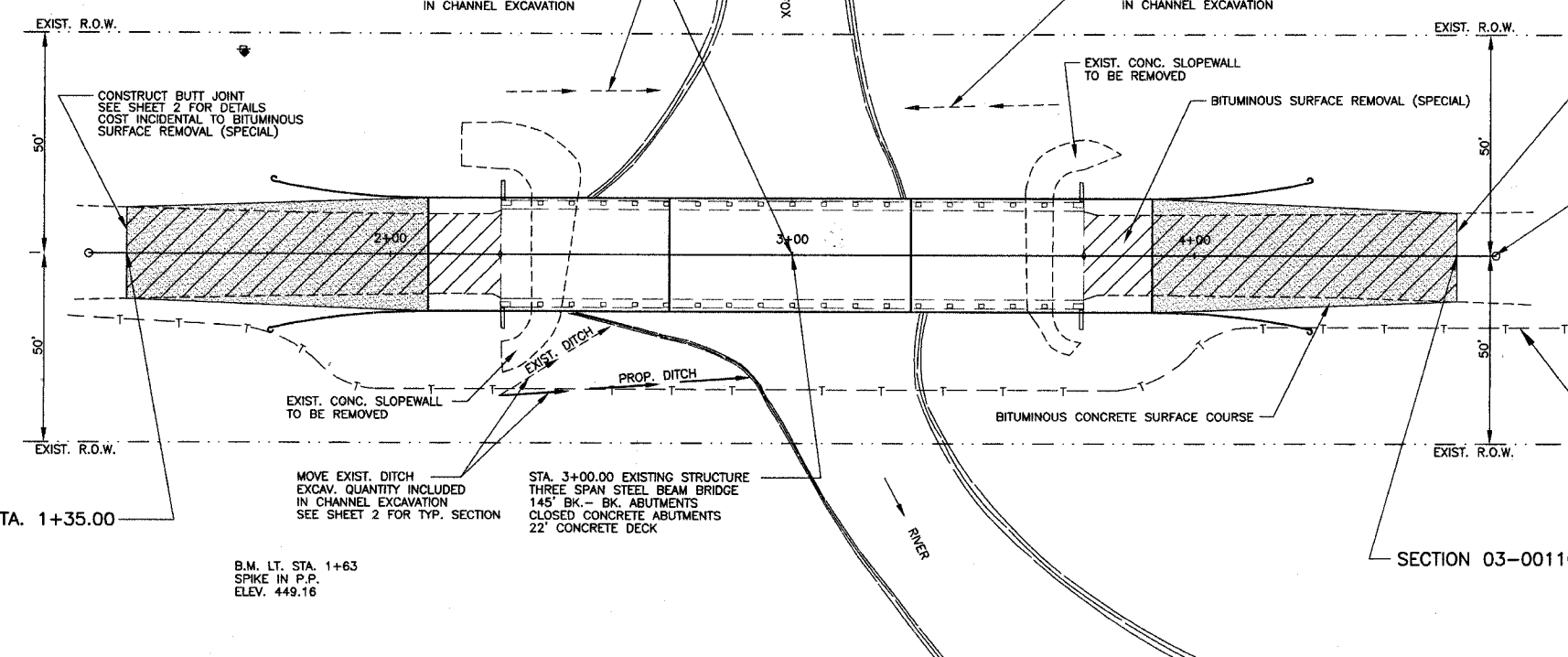
TIES P.O.T. STA. 4+50.00



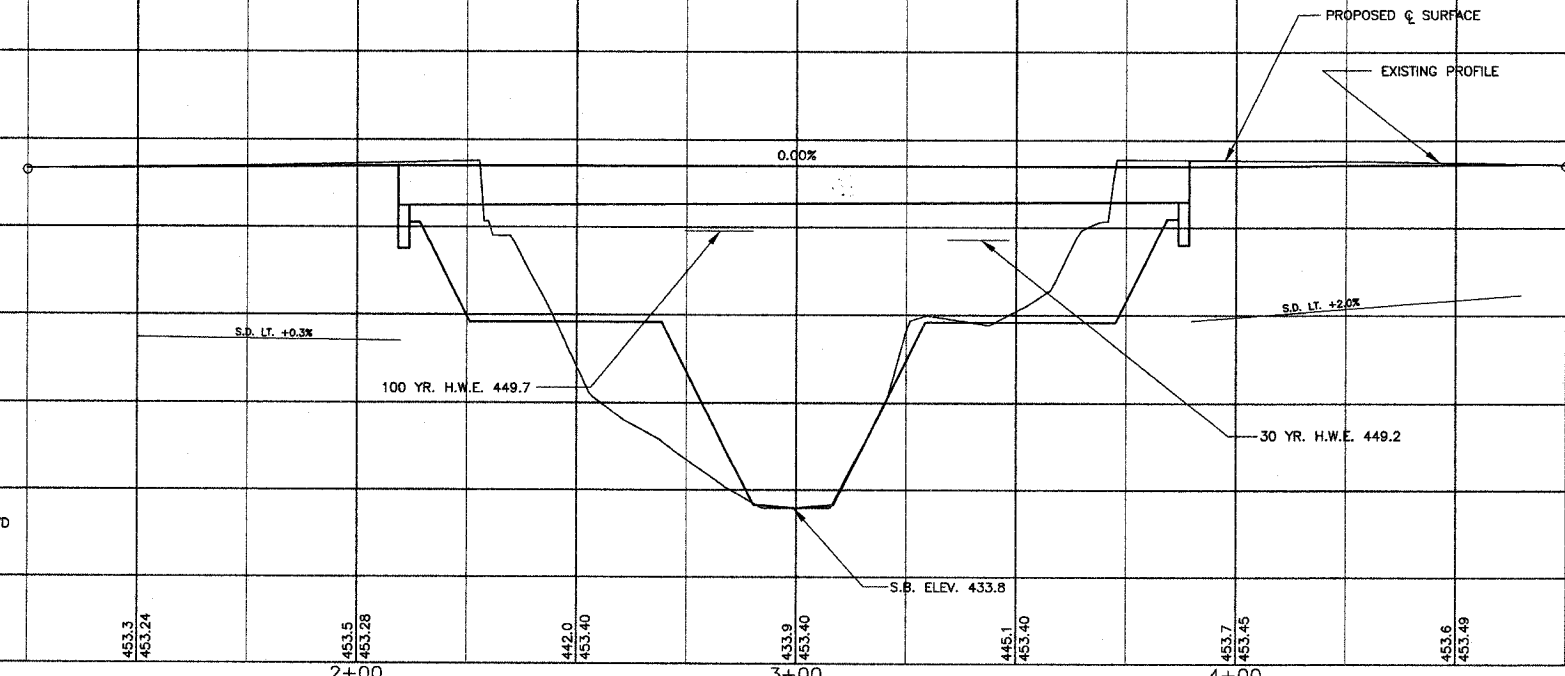
SECTION 03-00110-00-BR BEGINS STA. 1+35.00

SECTION 03-00110-00-BR ENDS STA. 4+65.00

B.M. LT. STA. 1+63
SPIKE IN P.P.
ELEV. 449.16



STATION	DESCRIPTION	UNIT	QUANTITY	ITEM	QUANTITY
470	EARTHWORK	CU. YD.		BIT. CONC. SURF. CSE., SUPERPAVE, MIX "C", N70	TON
465	CHANNEL EXCAVATION EARTH EXCAVATION ROAD EMBANKMENT WEST STREAM BANK EMBANKMENT FURNISHED EXCAVATION	490 50 465 275 535		STA. 1+35 TO 2+10 STA. 3+90 TO 4+65	38 38 TOTAL 76 TON
460				TRAFFIC BARRIER TERMINAL, TYPE 5A	EACH
455				LT. & RT. STA. 1+71 TO 1+96 LT. & RT. STA. 4+04 TO 4+29	2 2 TOTAL 4 EACH
450					
445	AGG. BASE CSE., TYPE B	TON		TRAFFIC BARRIER TERMINAL, TYPE 1	EACH
440	STA. 1+35 TO 2+10 STA. 3+90 TO 4+65	10 10 TOTAL 20 TON		LT. & RT. STA. 1+96 TO 2+10 LT. & RT. STA. 3+90 TO 4+04	2 2 TOTAL 4 EACH
435	BITUMINOUS SURFACE REMOVAL (SPECIAL)	SQ. YD.		SEEDING CLASS 2 (SPECIAL)	ACRE
430	STA. 1+35 TO 2+26 STA. 3+72 TO 4+65	213 215 TOTAL 430 SQ YD		STA. 1+35 TO 4+65	0.35
425					



0+00 1+00 2+00 3+00 4+00 5+00 6+00