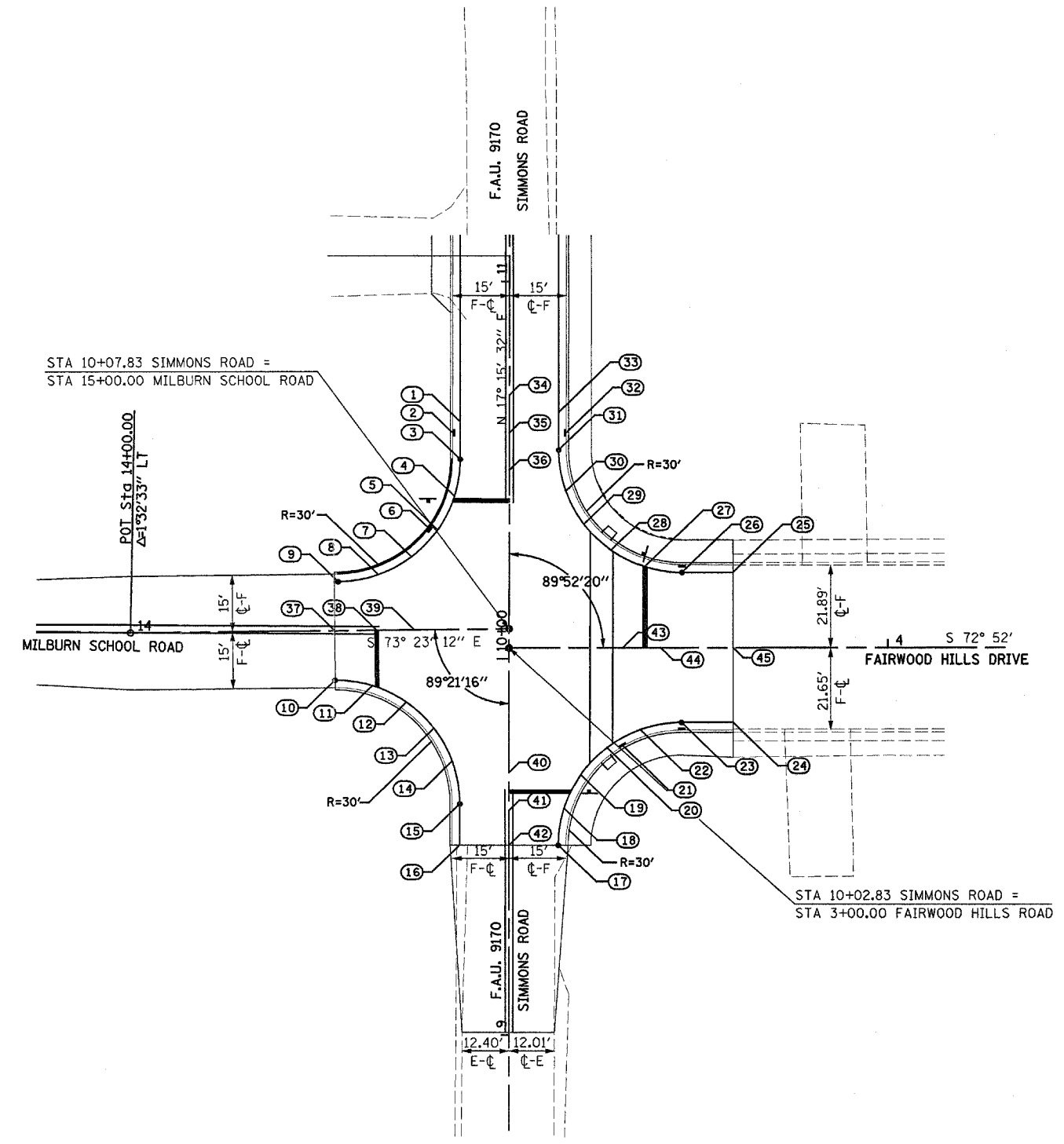


SIMMONS ROAD AT MILBURN SCHOOL RD & FAIRWOOD HILLS DRIVE					
POINT #	℄	STATION	OFFSET	ELEVATION	COMMENT
1	SIMMONS RD	10+62.90	13.00 LT	567.11	
2	SIMMONS RD	10+60.00	13.00 LT	567.11	INLET NO. 9, GR ELEV = 566.99
3	SIMMONS RD	10+52.90	13.00 LT	567.12	
4	SIMMONS RD	10+43.05	14.52 LT	566.98	
5	SIMMONS RD	10+34.13	18.95 LT	566.85	
6	SIMMONS RD	10+34.47	18.72 LT	566.85	INLET NO. 7, GR ELEV = 566.71
7	MILBURN	14+74.37	19.43 LT	566.71	
8	MILBURN	14+65.56	14.78 LT	566.58	
9	MILBURN	14+54.94	13.00 LT	566.43	
10	MILBURN	14+53.91	13.00 RT	566.41	
11	MILBURN	14+63.76	14.52 RT	566.62	
12	MILBURN	14+72.68	18.95 RT	566.84	
13	SIMMONS RD	9+81.74	19.87 LT	567.05	
14	SIMMONS RD	9+73.03	15.03 LT	567.27	
15	SIMMONS RD	9+61.73	13.00 LT	567.50	
16	SIMMONS RD	9+50.70	13.00 LT	567.56	
17	SIMMONS RD	9+50.70	13.00 RT	567.56	
18	SIMMONS RD	9+60.55	14.52 RT	567.39	
19	SIMMONS RD	9+69.47	18.95 RT	567.22	
20	FAIRWOOD	3+25.81	26.24 RT	567.05	
21	FAIRWOOD	3+30.06	25.80 RT	566.98	INLET NO. 2, GR ELEV = 566.86
22	FAIRWOOD	3+34.57	21.51 RT	566.88	
23	FAIRWOOD	3+45.50	19.64 RT	566.70	INLET NO. 2B, GR ELEV = 566.58
24	FAIRWOOD	3+59.09	19.65 RT	566.82	
25	FAIRWOOD	3+59.09	19.89 LT	566.81	
26	FAIRWOOD	3+45.67	19.91 LT	566.69	INLET NO. 2A, GR ELEV = 566.57
27	FAIRWOOD	3+35.83	21.44 LT	566.77	
28	FAIRWOOD	3+26.91	25.87 LT	566.85	
29	SIMMONS RD	10+35.66	19.67 RT	566.94	
30	SIMMONS RD	10+44.41	14.91 RT	567.02	
31	SIMMONS RD	10+55.42	13.00 RT	567.11	
32	SIMMONS RD	10+60.00	13.00 RT	567.11	INLET NO. 11, GR ELEV = 566.99
33	SIMMONS RD	10+65.42	13.00 RT	567.12	
34	SIMMONS RD	10+70.00	℄	567.31	
35	SIMMONS RD	10+60.00	℄	567.30	
36	SIMMONS RD	10+50.00	℄	567.31	
37	MILBURN	14+53.90	℄	566.60	
38	MILBURN	14+65.00	℄	566.83	
39	MILBURN	14+75.00	℄	567.03	
40	SIMMONS RD	9+50.70	℄	567.75	
41	SIMMONS RD	9+60.00	℄	567.70	
42	SIMMONS RD	9+70.00	℄	567.65	
43	FAIRWOOD	3+30.00	℄	567.05	
44	FAIRWOOD	3+40.00	℄	566.99	
45	FAIRWOOD	3+59.09	℄	567.11	



Plot Date: 9/27/2005
 Plot Time: 12:22:22 AM
 Plot Path: R:\0305\Auto\Construction\plans\plans\19.dgn