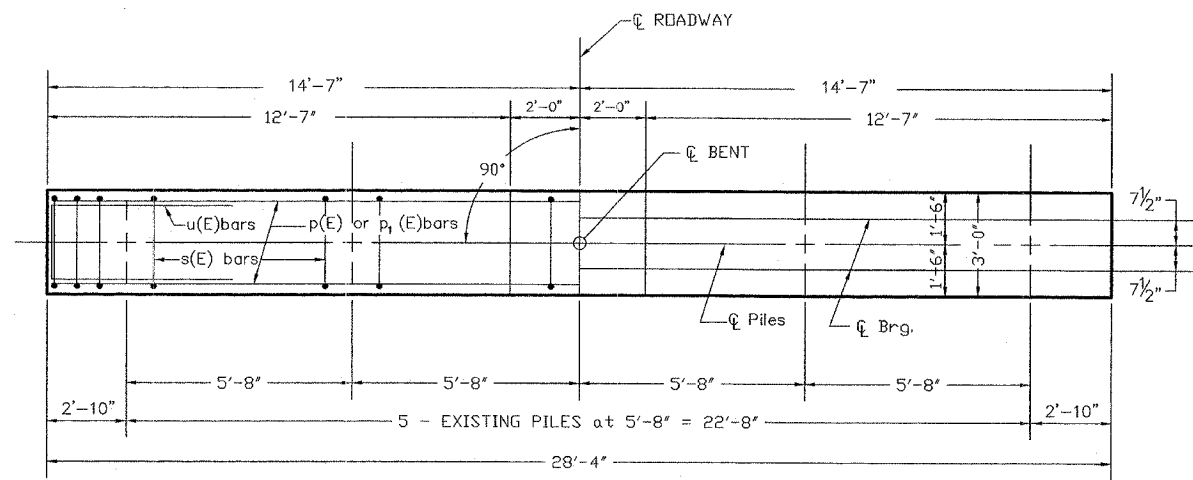
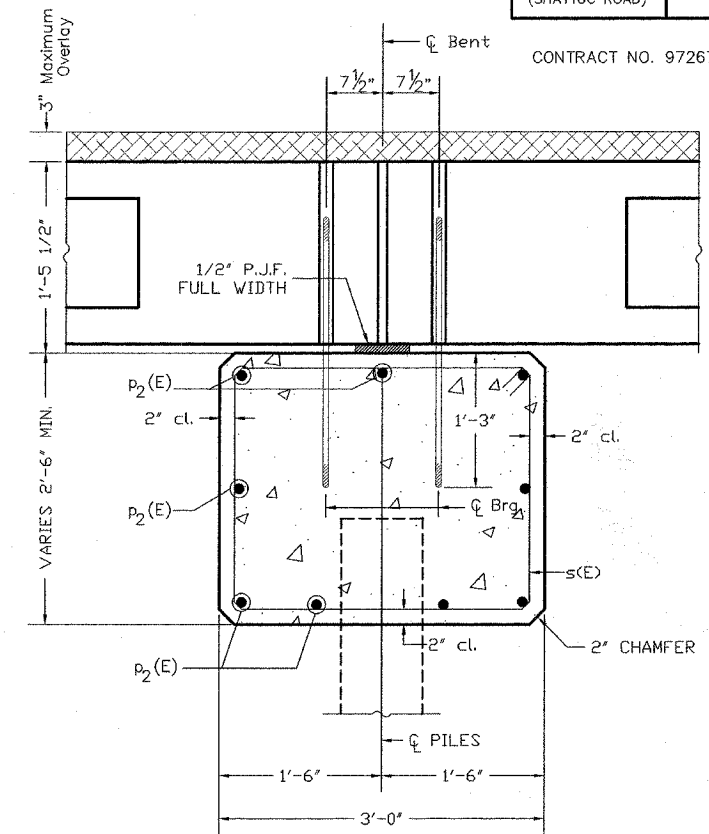


|                          |                |         |              |           |
|--------------------------|----------------|---------|--------------|-----------|
| ROUTE NO.                | SECTION        | COUNTY  | TOTAL SHEETS | SHEET NO. |
| C.H. 5<br>(SHATTUC ROAD) | 02-00079-00-BR | CLINTON | 15           | 8         |

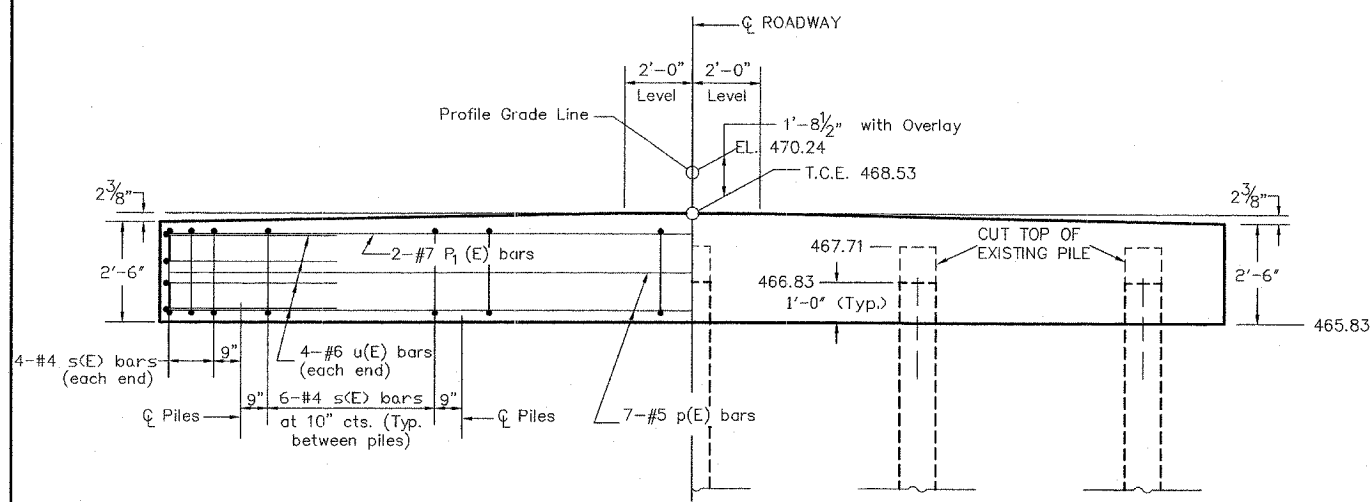
CONTRACT NO. 97267



**PLAN**



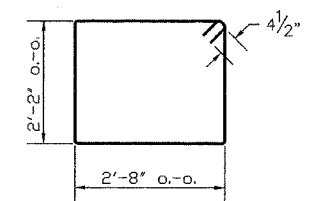
**SECTION THRU PIER  
(AT RIGHT ANGLES)**



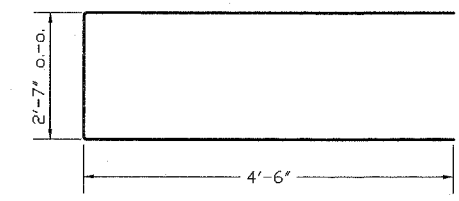
**ELEVATION**

**DESIGN STRESSES**

$f'_c = 3,500 \text{ PSI}$   
 $f_y = 60,000 \text{ PSI}$



**Bar s(E)**



**Bar u(E)**

**BILL OF MATERIAL  
FOR ONE PIER**

| Bar                 | No. | Size | Length       | Shape |
|---------------------|-----|------|--------------|-------|
| p <sub>2</sub> (E)  | 9   | #7   | 28'-0"       | —     |
| s(E)                | 32  | #4   | 10'-5"       | □     |
| u(E)                | 8   | #6   | 11'-7"       | —     |
| Concrete Structures |     |      | 8.2 Cu. Yds. |       |
| Reinforcement Bars  |     |      | 880 Lbs.     |       |

**NOTE:**

Reinforcement bars shall conform to A.A.S.H.T.O. M-31 or M-322, Grade 60. All reinforcement bars shall be epoxy coated.

**PIER DETAILS**  
**C.H. 5 (SHATTUC ROAD)**  
**OVER LOST CREEK**  
**02-00079-00-BR**  
**CLINTON COUNTY**  
**STATION 23+55**  
**S.N. 014-3014**