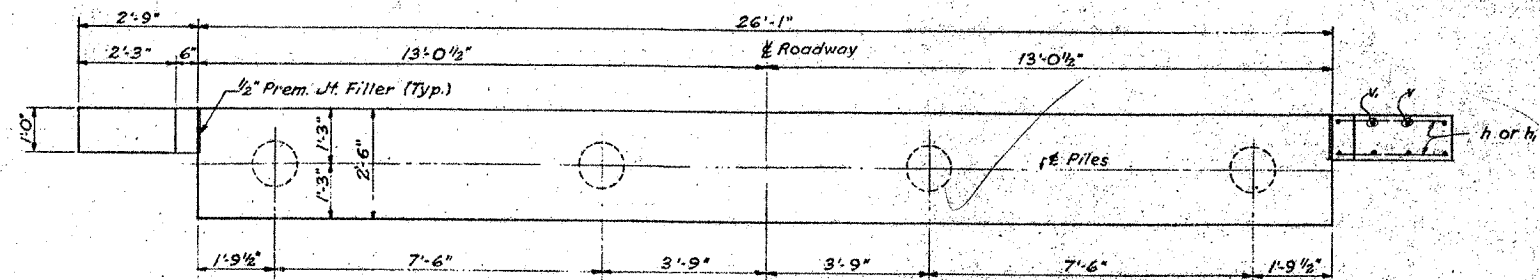
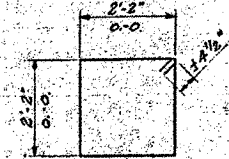


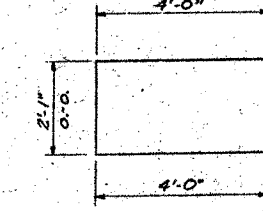
ROUTE NO.	SECTION	COUNTY	TOTAL SHEETS	SHEET NO.
C.H. 5 (SHATTUC ROAD)	02-00079-00-BR	CLINTON	15	15
CONTRACT NO. 97267				
F.A.S. 1784	27G	Clinton	19	15
SHEET NO. 5-880-1				



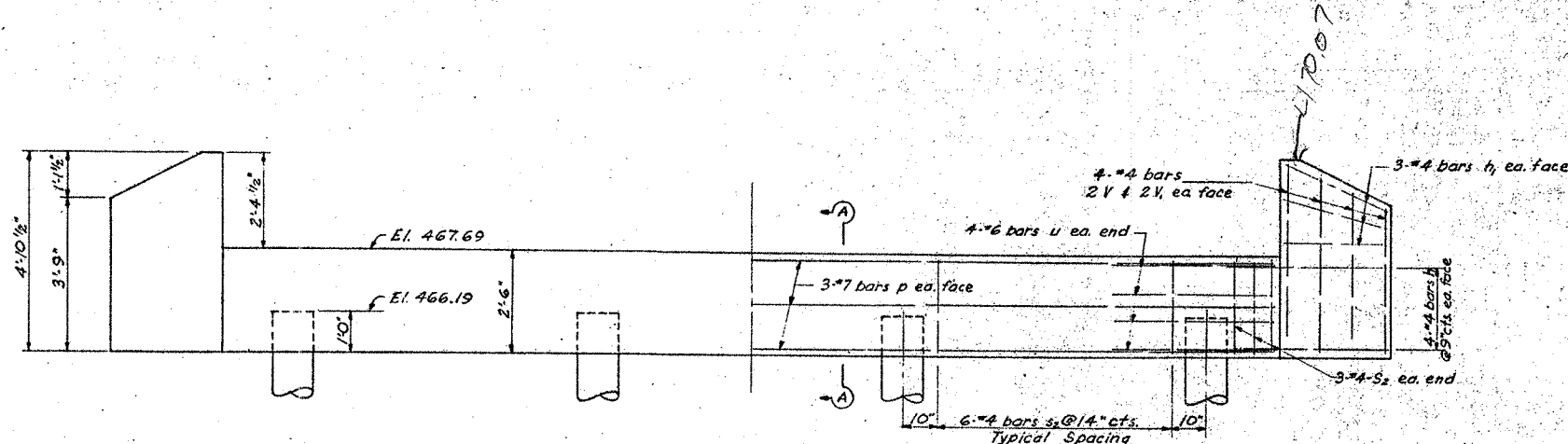
**PLAN**



**BAR s<sub>2</sub>**



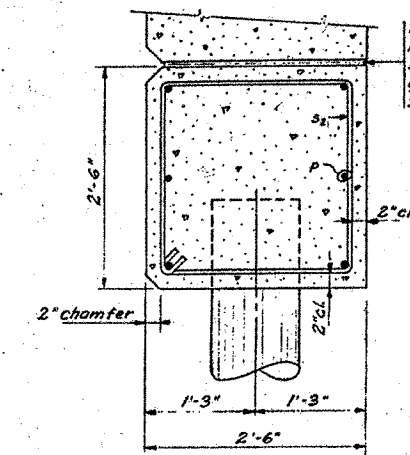
**BAR u**



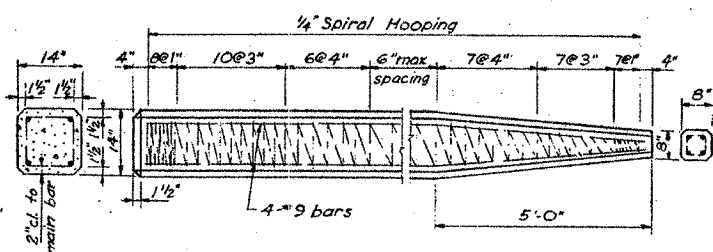
**ELEVATION**

**ABUT. PILES**

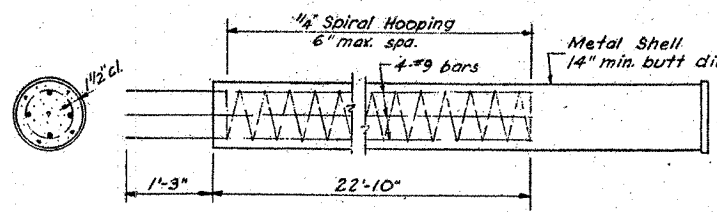
Type - Creosoted Piles  
Min. Capacity - 20 Tons  
Est. Length - 25'  
No. Req'd. (2 Abuts) - 8



**SECTION A-A**



**DETAIL OF PRECAST CONCRETE PILES FOR PIERS**



**DETAIL OF CAST IN PLACE PILES FOR PIERS**

Note to Contractor: For pile lengths up to 45 ft. use two slings placed at a distance of 0.21 L from each end. On piles longer than 45 ft. use three slings placed at 0.12 L from each end and at mid-point of pile.

**BILL OF MATERIAL - 2 ABUTS**

BAR NO.	NO.	SIZE	LENGTH	SHAPE	
h	32	#4	4'-0"	—	
h <sub>1</sub>	24	#4	2'-6"	—	
p	12	#7	25'-9"	—	
s <sub>2</sub>	48	#4	9'-9"	□	
u	16	#6	10'-1"	□	
v	16	#4	3'-8"	—	
v <sub>1</sub>	16	#4	4'-5"	—	
Class X Concrete				Cu. Yds.	13.6
Reinforcement Bars				Lbs.	1390
Creosoted Piles				Lin. Ft.	200
Test Piles (Timber)				Ea.	1

**ABUTMENTS**  
PROJECT S-880(11)  
F.A.S. RT. 1784 (S.A. RT. 3) SEC. 27G  
CLINTON CO.  
STATION 23+55

HANSON, COLLINS & RICE  
CONSULTING ENGINEERS

DESIGNED BY T.E.B. CHECKED BY D.J.M.  
DATE 9-12-57 SHEET NO. 8-57-B