

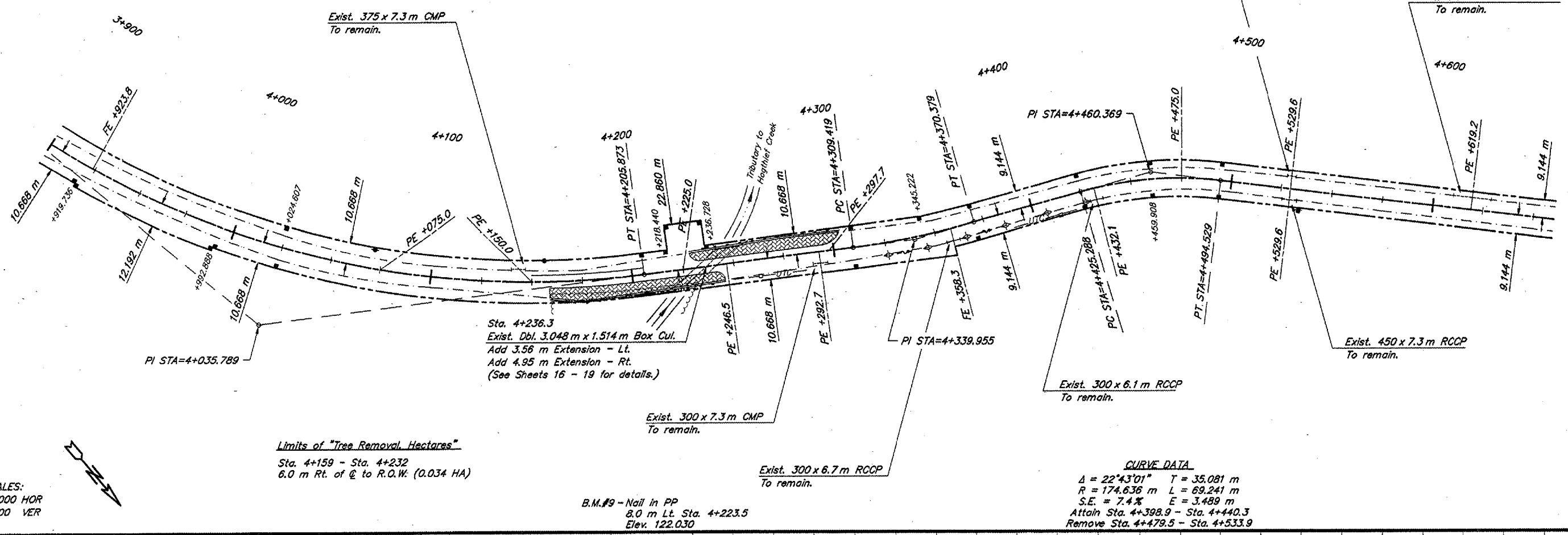
ROUTE	SECTION	COUNTY	TOTAL SHEETS	SHEET NO.
FAS 1934	93-00017-01-RS	HARDIN	30	10
PROJECT NO. STPSR-1934 (108)			CONTRACT NO. 99171	

CURVE DATA
 $\Delta = 47^{\circ}34'01''$ $T = 192.449$ m
 $R = 436.683$ m $L = 362.533$ m
 $S.E. = 6.3\%$ $E = 40.526$ m
 Attain Sta. 3+801.2 - Sta. 3+858.6
 Remove Sta. 4+190.6 - Sta. 4+247.4

CURVE DATA
 $\Delta = 8^{\circ}30'00''$ $T = 30.536$ m
 $R = 410.912$ m $L = 60.960$ m
 $S.E. = 6.5\%$ $E = 1.133$ m
 Attain Sta. 4+266.8 - Sta. 4+325.3
 Remove Sta. 4+354.5 - Sta. 4+398.9

Exist. 300 x 4.3 m RCCP
 To remain.

Exist. 300 x 18.9 m RCCP
 To remain.



Limits of "Tree Removal Hectares"
 Sta. 4+159 - Sta. 4+232
 6.0 m Rt. of \mathcal{C} to R.O.W. (0.034 HA)

Sta. 4+236.3
 Exist. Dbl. 3.048 m x 1.514 m Box Cul.
 Add 3.56 m Extension - Lt.
 Add 4.95 m Extension - Rt.
 (See Sheets 16 - 19 for details.)

B.M.#9 - Nail in PP
 8.0 m Lt. Sta. 4+223.5
 Elev. 122.030

CURVE DATA
 $\Delta = 22^{\circ}43'01''$ $T = 35.081$ m
 $R = 174.636$ m $L = 69.241$ m
 $S.E. = 7.4\%$ $E = 3.489$ m
 Attain Sta. 4+398.9 - Sta. 4+440.3
 Remove Sta. 4+479.5 - Sta. 4+533.9

SCALES:
 1:1000 HOR
 1:100 VER

475PRREC 02/04/03 15:24 RM

