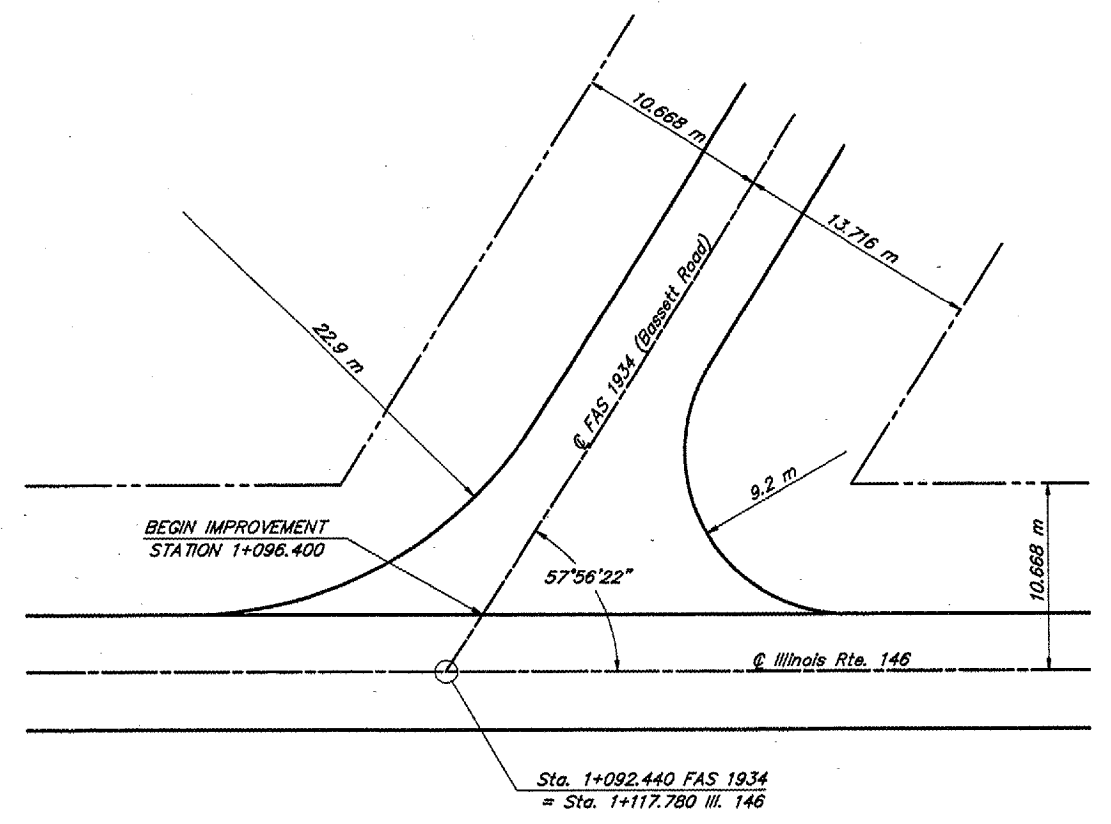
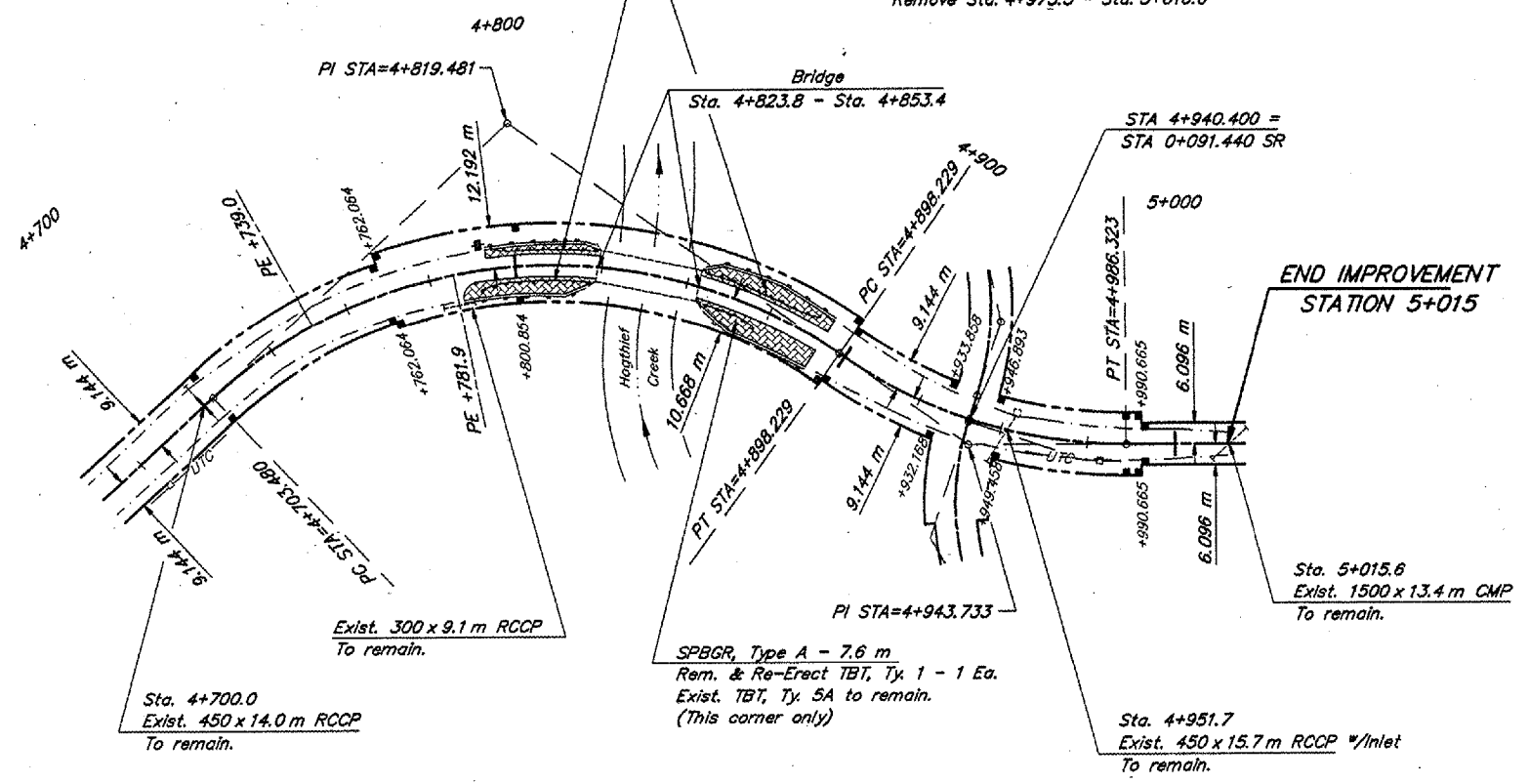


ROUTE	SECTION	COUNTY	TOTAL SHEETS	SHEET NO.
FAS 1934	83-00017-01-RS	HARDIN	30	11
PROJECT NO. STPSR-1934 (108)			CONTRACT NO. 09171	

CURVE DATA
 $\Delta = 35^{\circ}24'18''$ $T = 45.504$ m
 $R = 142.561$ m $L = 88.093$ m
 $S.E. = 5.0\%$ $E = 7.086$ m
 Attain Sta. 4+898.2 - Sta. 4+909.0
 Remove Sta. 4+975.5 - Sta. 5+016.6

SPBGR, Type A - 22.9 m
 Rem. & Re-Erect TBT, Ty. 1 - 1 Ea.
 Exist. TBT, Ty. 5A to remain.
 (Typical on 3 sides)

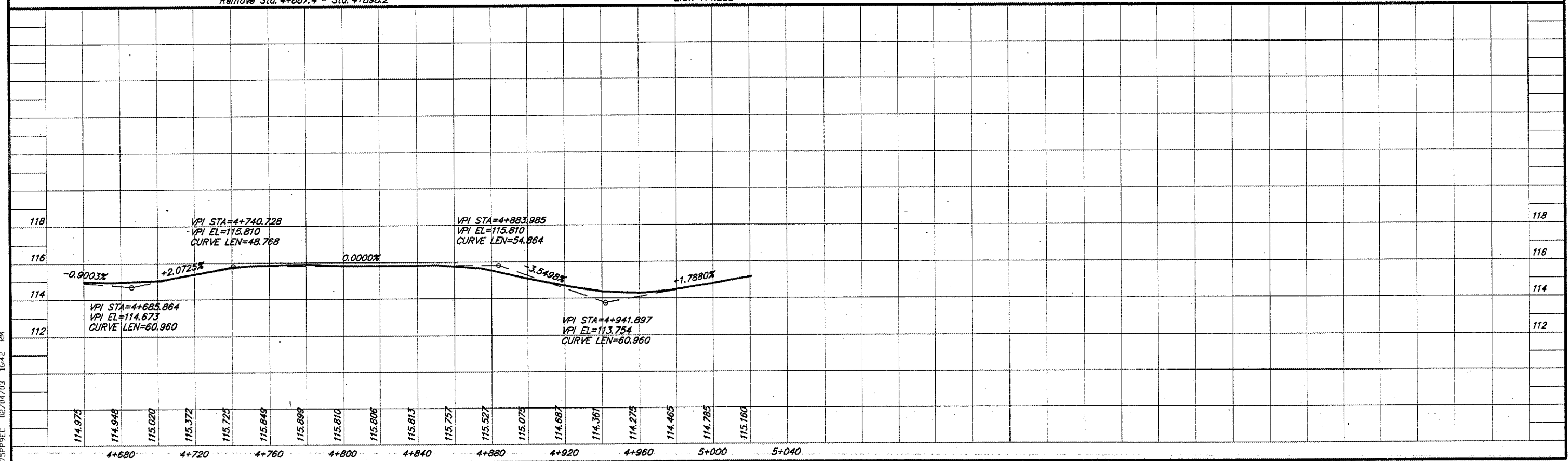


CURVE DATA
 $\Delta = 78^{\circ}16'13''$ $T = 116.001$ m
 $R = 142.561$ m $L = 194.748$ m
 $S.E. = 5.0\%$ $E = 41.232$ m
 Attain Sta. 4+673.2 - Sta. 4+714.3
 Remove Sta. 4+887.4 - Sta. 4+898.2

SCALES:
 1:1000 HOR
 1:100 VER

B.M.#10 - SE corner of headwall
 20.0 m Rt. Sta. 4+940
 Elev. 114.325

DETAIL OF INTERSECTION WITH ILL. RTE. 146



475PPEC 02/04/03 16:42 PM