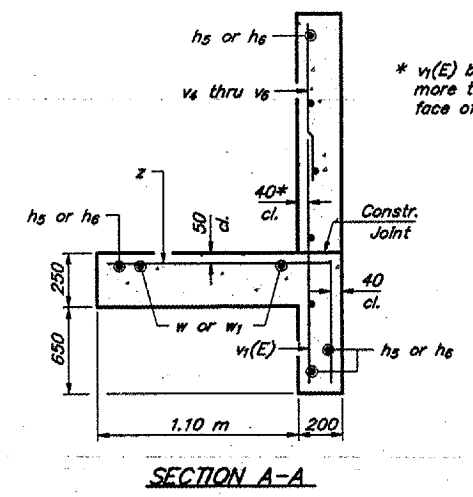
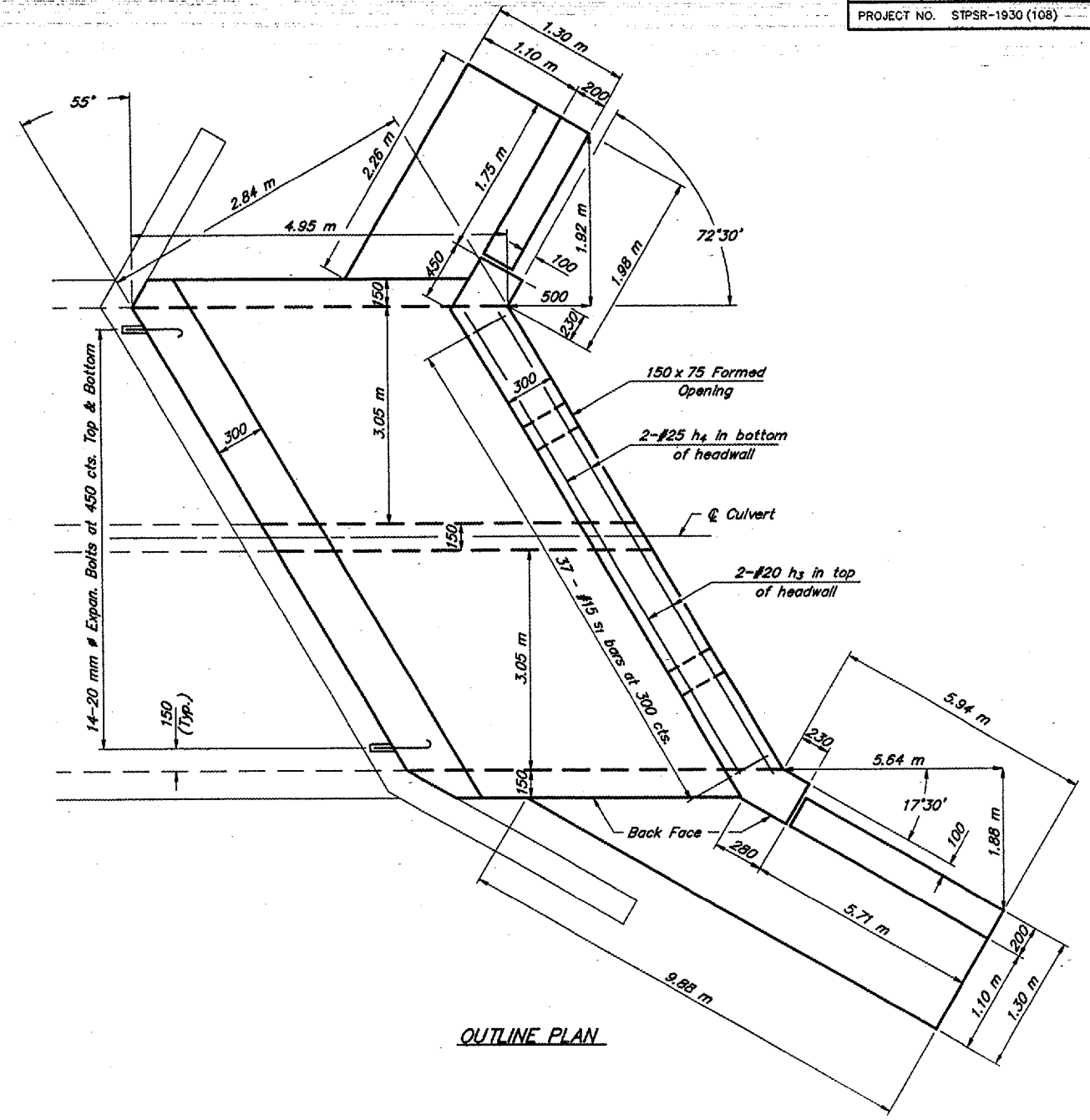
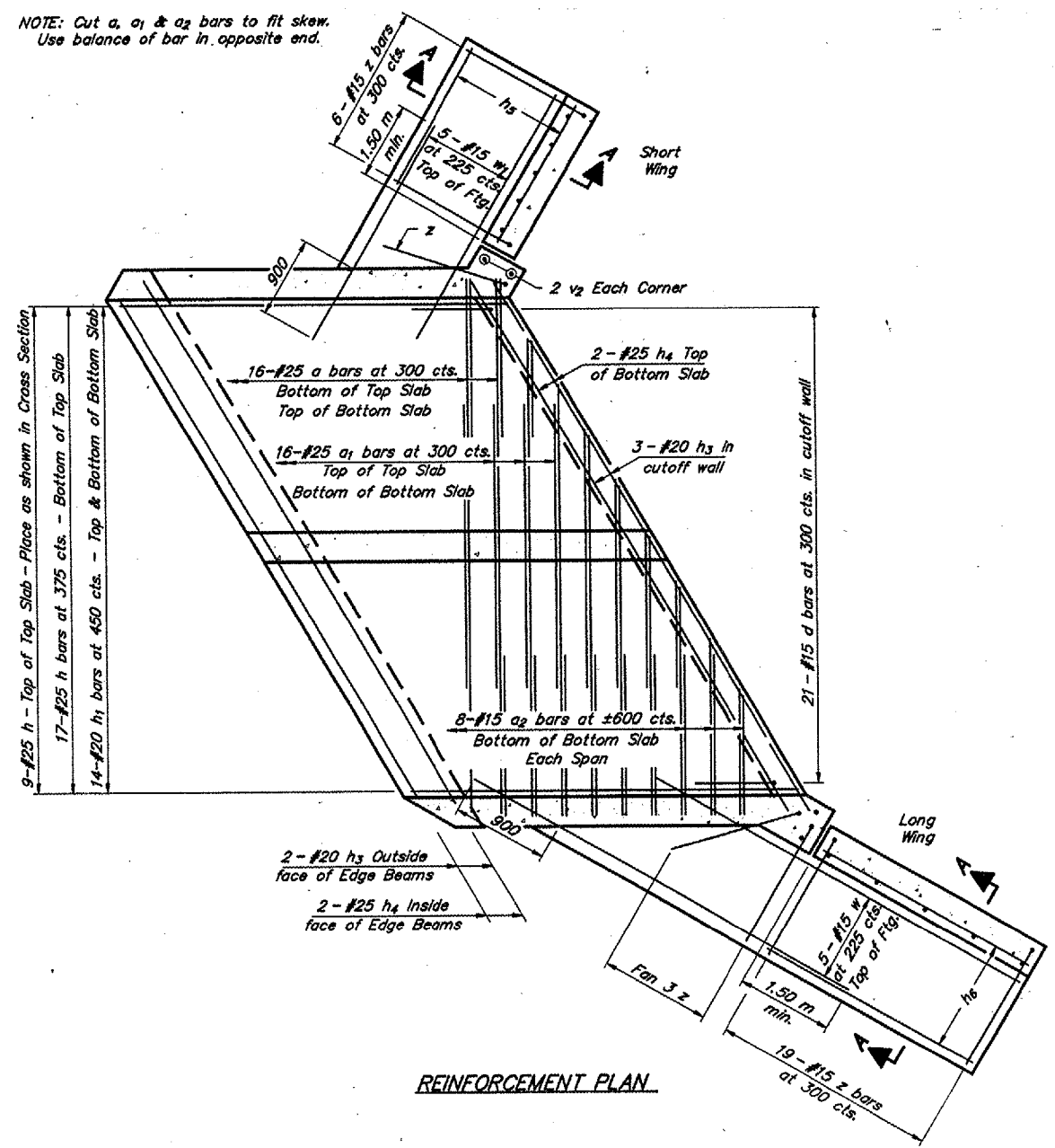


ROUTE	SECTION	COUNTY	TOTAL SHEETS	SHEET NO.
FAS 1934	93-00017-01-RS	HARDIN	30	19
PROJECT NO. STPSR-1930 (108)			CONTRACT NO. 99171	

NOTE: Cut a_1 & a_2 bars to fit skew. Use balance of bar in opposite end.



* $v_1(E)$ bars shall not be placed more than 40 mm cl. from back face of wingwalls.

Sheet 2 of 2

BOX CULVERT EXTENSION
 STATION 4+236.3 RT.
 FAS ROUTE 1934
 SECTION 93-00017-01-RS
 PROJECT NO. STPSR-1934 (108)
 HARDIN COUNTY

4795ECP 06/18/02 16:05 RH