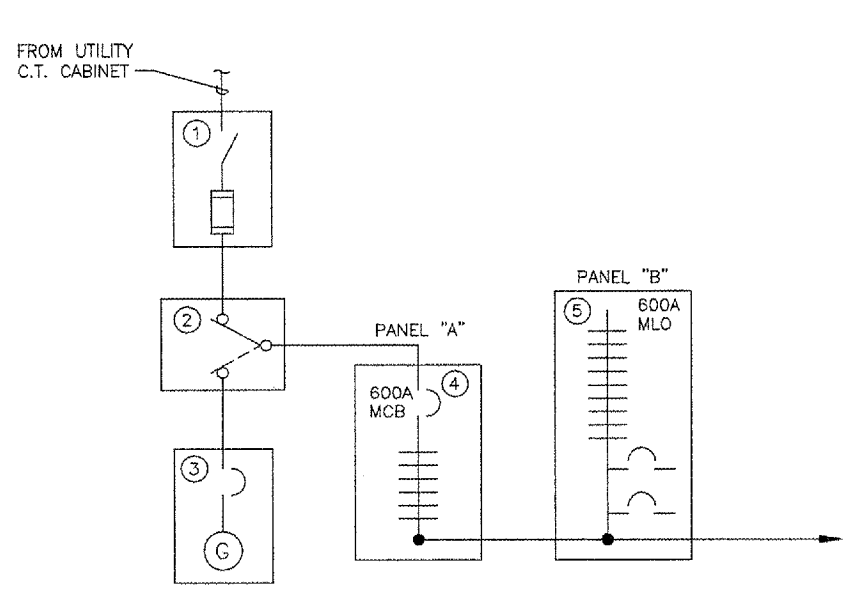
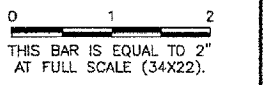


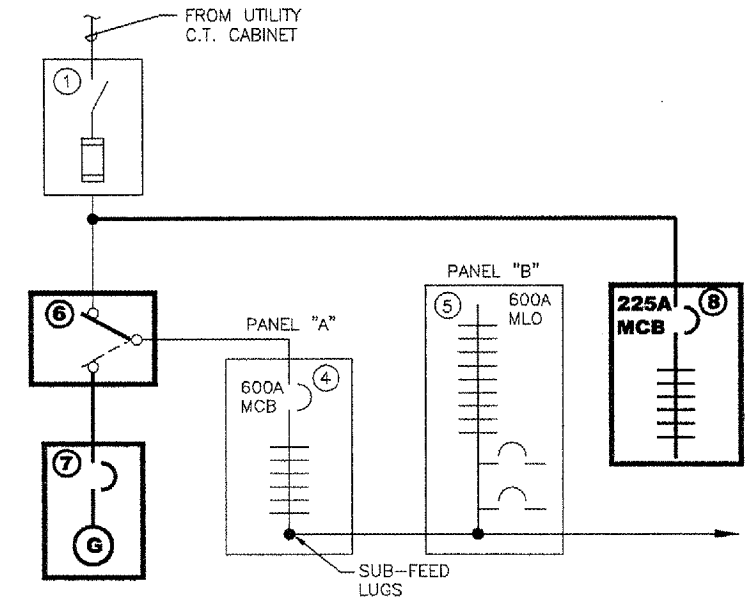
IMAGE FILES:

REVISIONS

NUMBER	BY	DATE



EXISTING ONE-LINE DIAGRAM



NEW ONE-LINE DIAGRAM

NOTES:

- ① EXISTING 600A MAIN FUSED DISCONNECT WITH CLASS "L" FUSES.
- ② EXISTING 600A AUTOMATIC TRANSFER SWITCH.
- ③ EXISTING STANDBY GENERATOR 150KW/188KVA WITH 600A MAIN CIRCUIT BREAKER.
- ④ EXISTING PANELBOARD "A", 600A MAIN C.B., 600A BUS INTERIOR.
- ⑤ EXISTING PANELBOARD "B", 600A M.L.O., 600A BUS INTERIOR.
- ⑥ **NEW 800A AUTOMATIC TRANSFER SWITCH.**
- ⑦ **NEW STANDBY GENERATOR 200 KW WITH 600A MAIN CIRCUIT BREAKER.**
- ⑧ **NEW PANELBOARD, 225A MAIN C.B. MAKE TAP CONNECTION IN THE NEW ATS**

BLOOMINGTON-NORMAL AIRPORT AUTHORITY  
 CENTRAL ILLINOIS REGIONAL AIRPORT  
 BLOOMINGTON, ILLINOIS

REPLACE AIRFIELD LIGHTING VAULT STANDBY GENERATOR

ONE-LINE DIAGRAMS

**CMT**  
 CRAWFORD, MURPHY & TILLY, INC.  
 CONSULTING ENGINEERS  
 Copyright © CMT, Inc.

DESIGN BY: T.M.  
 DRAWN BY: CMT  
 CHECKED BY: JET  
 APPROVED BY: JLV  
 DATE: 1/13/06  
 JOB No: 05085-06-00