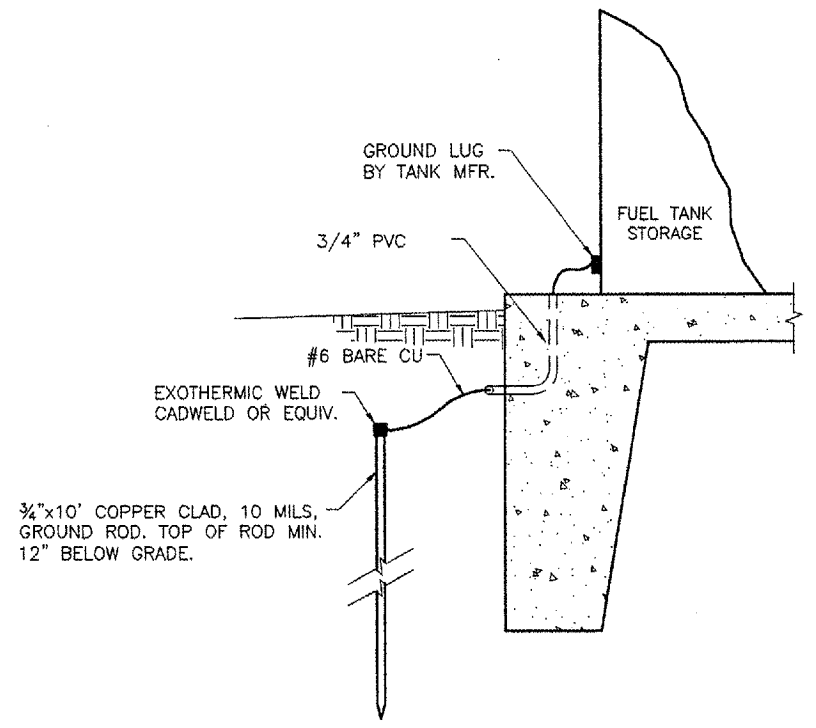
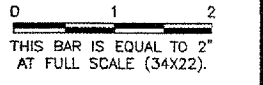
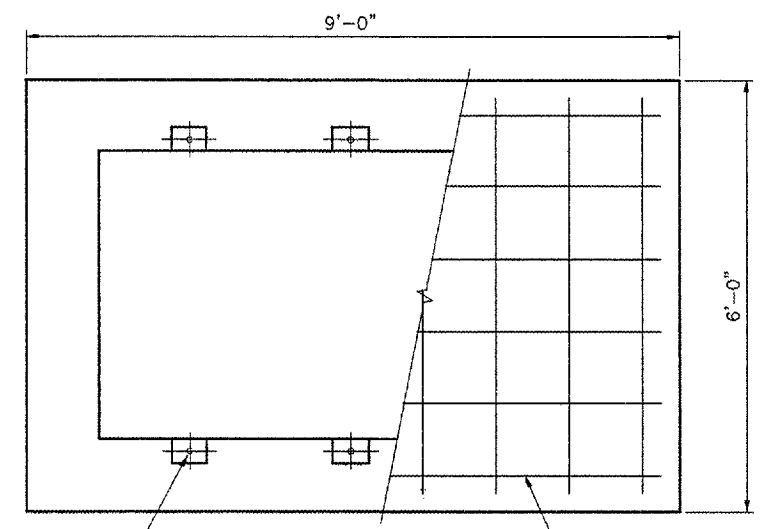


REVISIONS		
NUMBER	BY	DATE



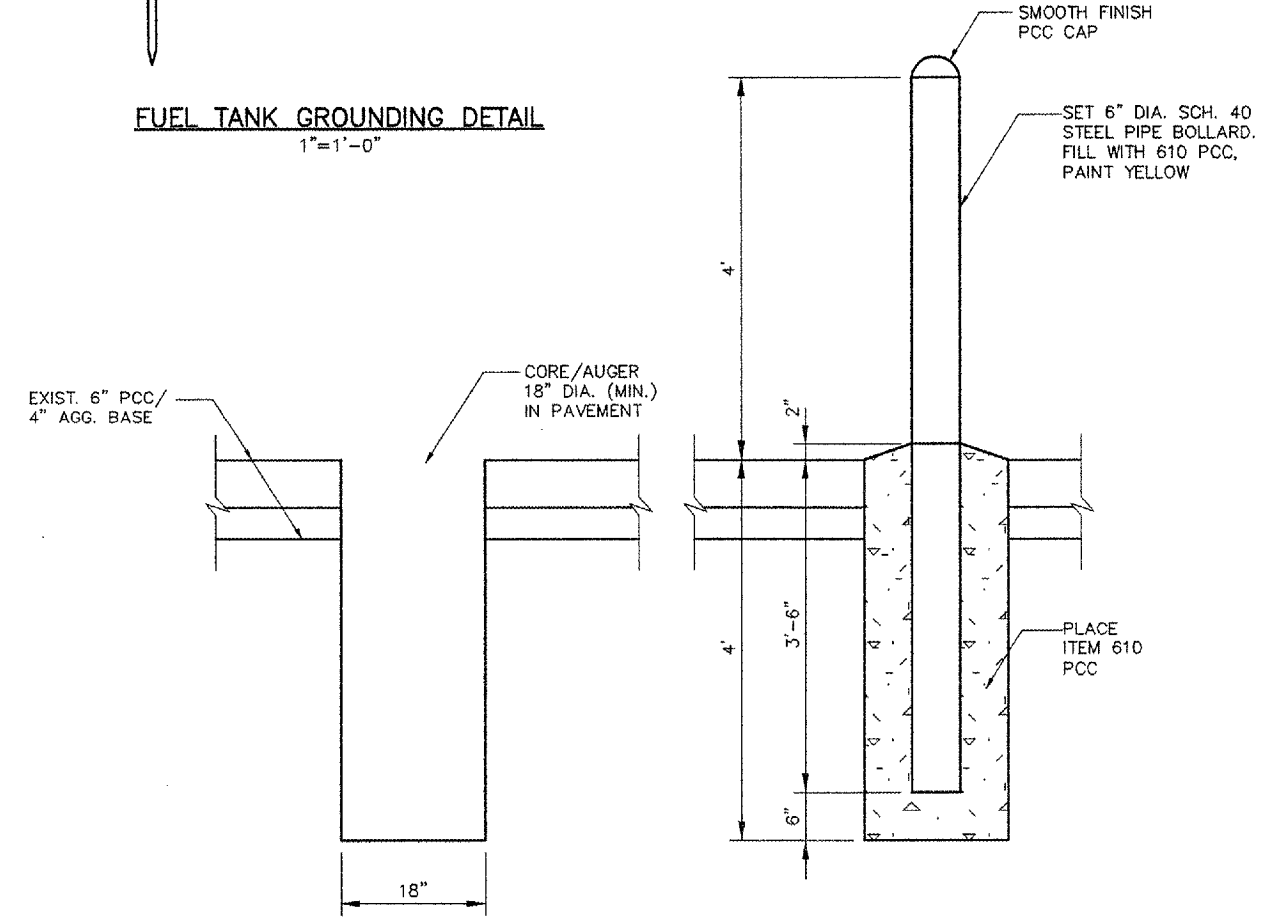
**FUEL TANK GROUNDING DETAIL**  
 1"=1'-0"

**NOTES:**  
 VERIFY SLAB SIZE WITH TANK DRAWING PRIOR TO CONSTRUCTION.  
 CONCRETE SLAB SHALL BE SET TRUE AND LEVEL.  
 CONCRETE SHALL HAVE A MIN. COMPRESSIVE STRENGTH OF 3500 PSI. AT 14 DAYS.



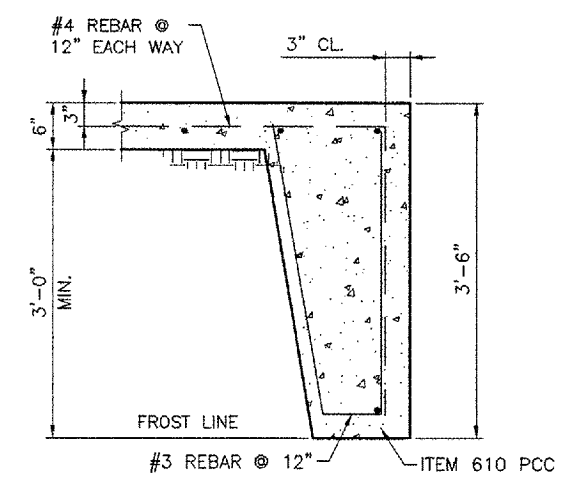
3/4" DIA. ANCHOR BOLTS (TYPICAL)  
 #4 REBAR @ 12" EA. WAY IN CENTER OF 6" THICK CONCRETE SLAB

**FOUNDATION PLAN**  
 3/4"=1'-0"



**STEP 1**  
**BOLLARD INSTALLATION DETAIL**  
 N.T.S.

**STEP 2**  
 NOTE: PROPOSED BOLLARDS WILL BE FIELD LOCATED



**TYPICAL ELEVATION**  
 1"=1'-0"

**BLOOMINGTON-NORMAL AIRPORT AUTHORITY**  
**CENTRAL ILLINOIS REGIONAL AIRPORT**  
**BLOOMINGTON, ILLINOIS**  
**REPLACE AIRFIELD LIGHTING VAULT STANDBY GENERATOR**  
**DETAILS**

**CMT**  
 CRAWFORD, MURPHY & TILLY, INC.  
 CONSULTING ENGINEERS  
 © Copyright CMT, Inc.

DESIGN BY:	TM
DRAWN BY:	CMT
CHECKED BY:	JET
APPROVED BY:	RLW
DATE:	1/13/06
JOB No:	05085-06-00