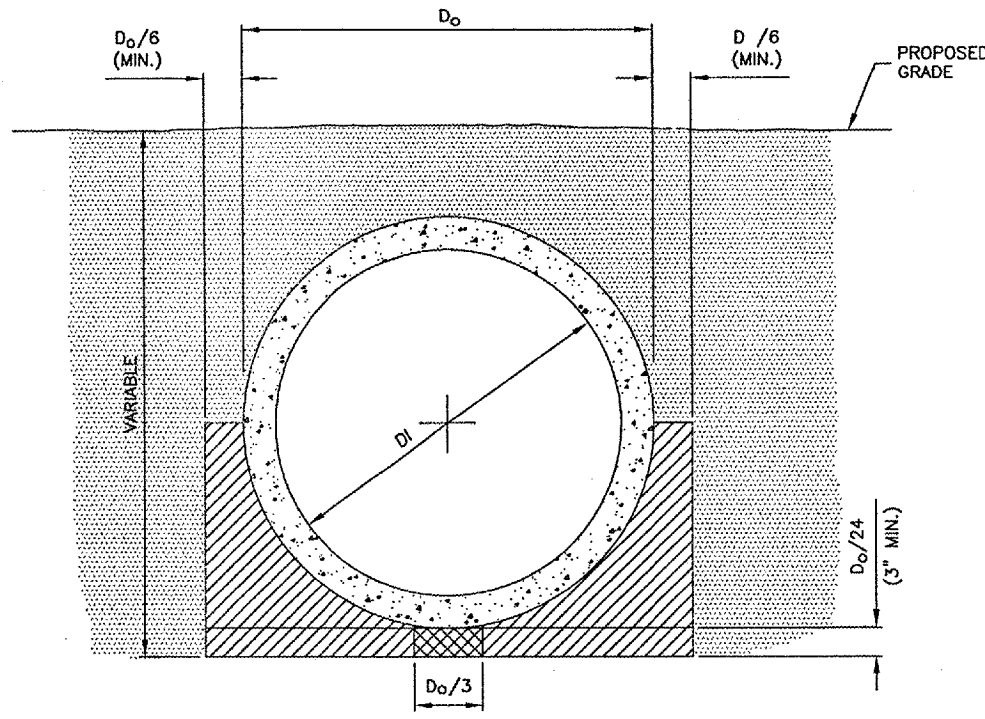
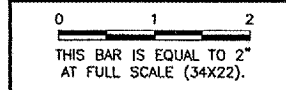
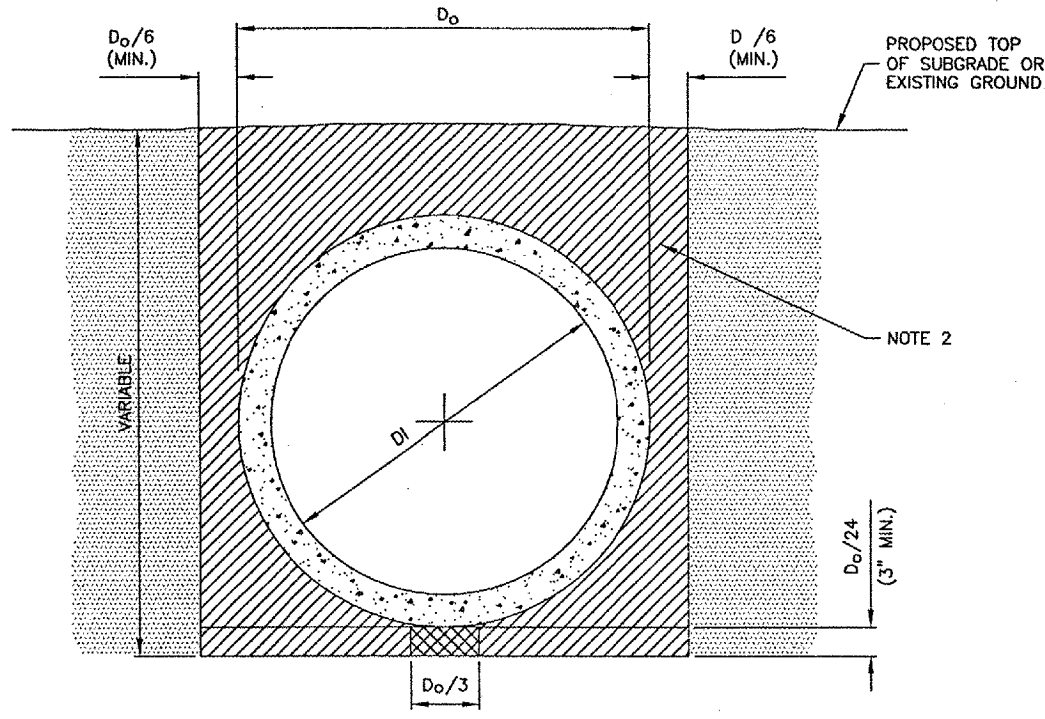


REVISIONS		
NUMBER	BY	DATE



STANDARD TRENCH INSTALLATION
 NON-PAVED AREA
 N.T.S.



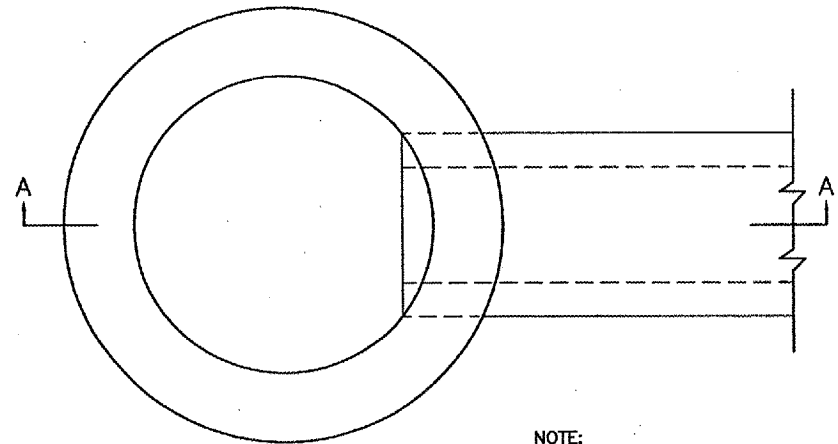
STANDARD TRENCH INSTALLATION
 PROPOSED PAVED AREAS
 N.T.S.

LEGEND

- DRAINAGE CONDUIT MATERIAL—CONCRETE
- MIDDLE BEDDING LOOSELY PLACED UNCOMPACTED BEDDING
- HAUNCH AND OUTER BEDDING COMPACTION— 95% STANDARD PROCTOR
- LOWER SIDE AND OVERFILL COMPACTION— SAME AS EMBANKMENT REQUIREMENTS

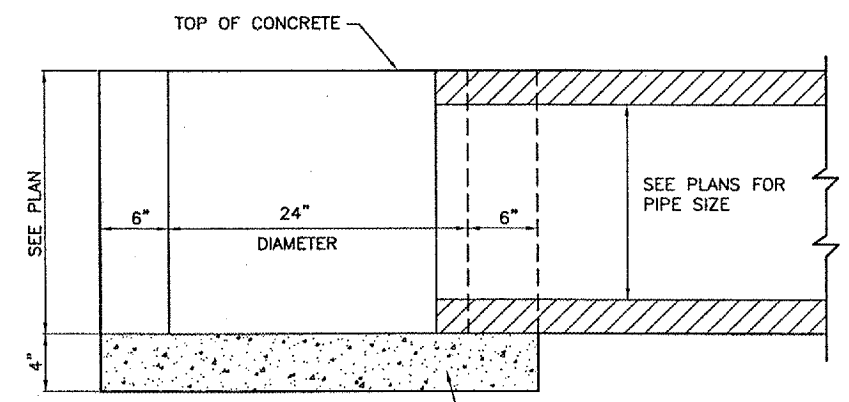
D_o PIPE OUTSIDE DIAMETER
 D_i PIPE INSIDE DIAMETER

- NOTES**
- BEDDING SHOWN IS IN ACCORDANCE WITH "STANDARD EMBANKMENT INSTALLATIONS", STANDARD INSTALLATION & BEDDING FACTORS FOR THE INDIRECT DESIGN METHOD (DESIGN DATA 40), AMERICAN CONCRETE PIPE ASSOCIATION.
 - BACKFILL TO EXTEND 3' BEYOND EDGES OF PROPOSED PAVEMENT.
 - PAVEMENT REMOVAL ASSOCIATED WITH PIPE REMOVAL SHALL BE INCIDENTAL TO THE PIPE REMOVAL COST.

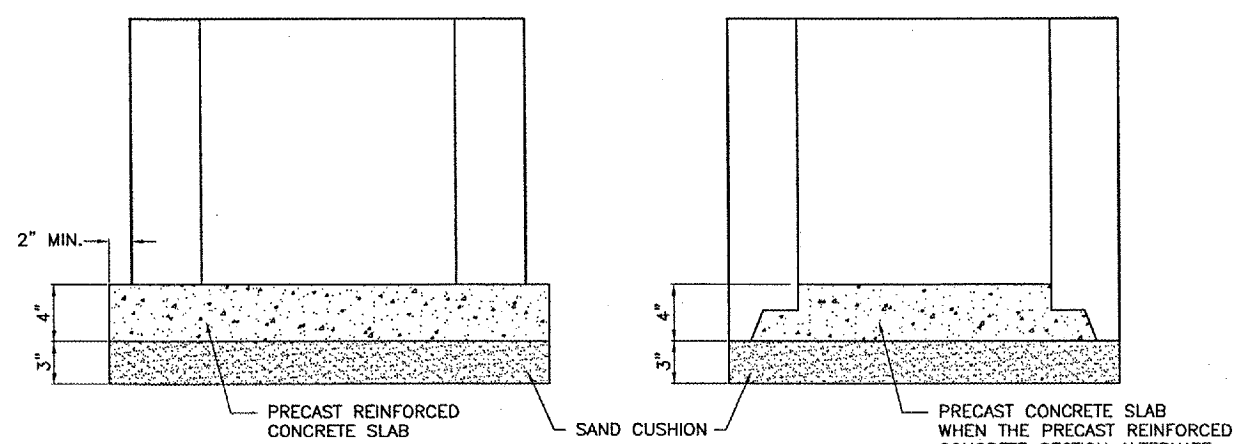


PLAN

NOTE:
 FRAME AND GRATE TO BE
 NEENAH R-2504 OR APPROVED
 EQUAL.

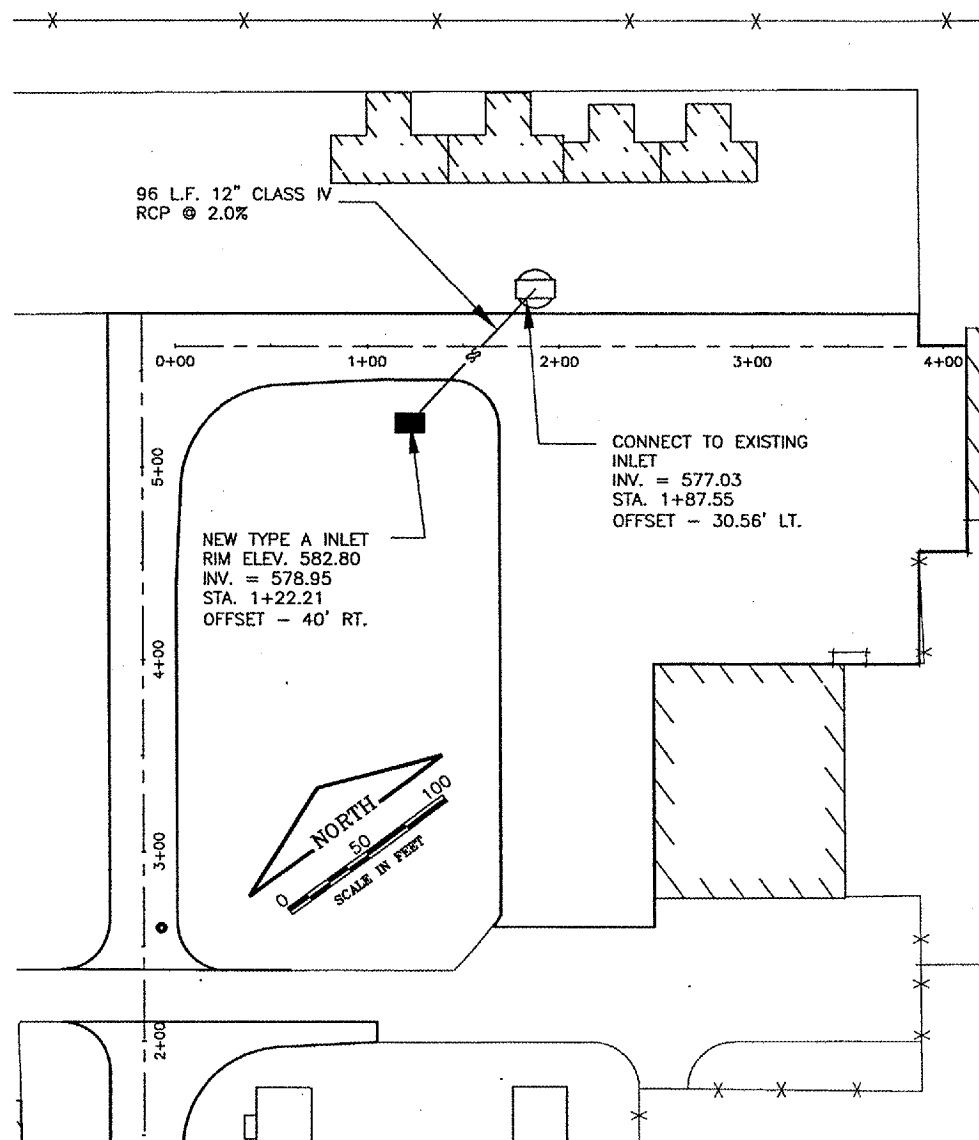


SECTION A-A



ALTERNATE METHODS

IDOT STANDARD 602301
 TYPE A INLET



SPRINGFIELD AIRPORT AUTHORITY
ABRAHAM LINCOLN CAPITAL AIRPORT
SPRINGFIELD, ILLINOIS
REHABILITATE SOUTHEAST QUADRANT HANGAR PAVEMENTS
DRAINAGE DETAILS

© Copyright CMT, Inc.

CMT
 CRAWFORD, MURPHY & TILLY, INC.
 CONSULTING ENGINEERS
 License No. 384-000613

DESIGN BY: *CBL*
 DRAWN BY: CMT
 CHECKED BY: *CBL*
 APPROVED BY: *RW*
 DATE: 01/27/2006
 JOB No: 04035-10-00
 ILLINOIS PROJECT SPI-3346
 SHEET 14 OF 20 SHEETS