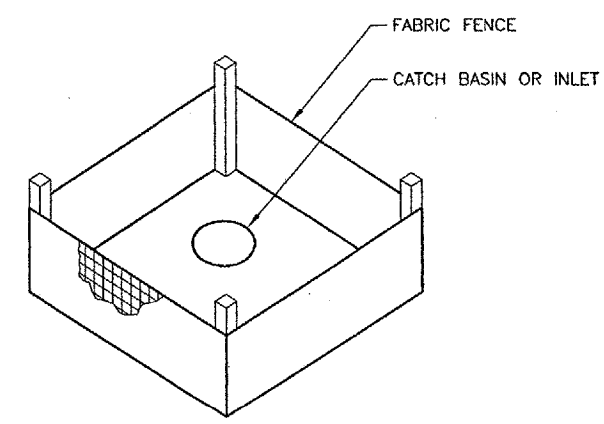
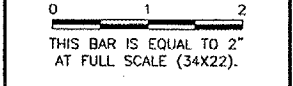


CA001

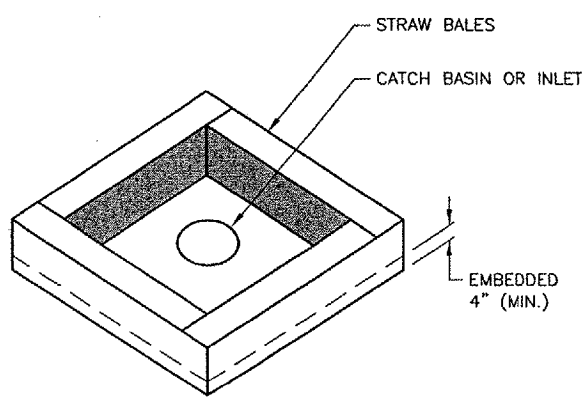
K:\Springfield\0403510\Draw\Sheets\1105\FILE: 15_EROSION_1.dwg
 UPDATE BY: cgroth
 SURVEY BOOK #
 DATE: Sat 1/28/06 12:26pm
 XREF DWG: tb.dwg
 C:\info.dwg

IMAGE FILES: Soalogo.tif

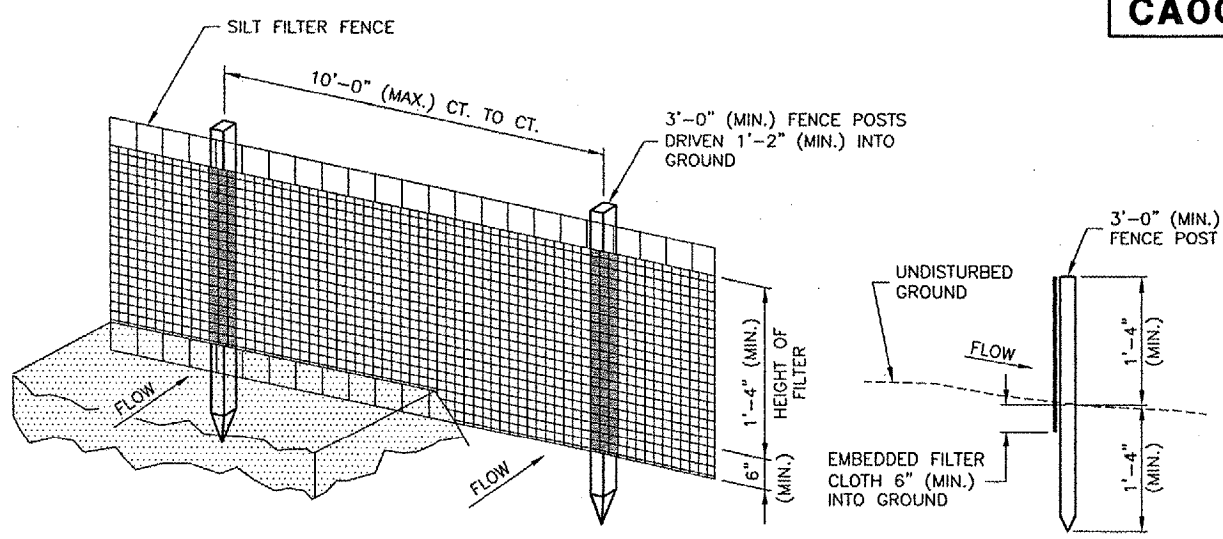
REVISIONS		
NUMBER	BY	DATE



INLET PROTECTION WITH FABRIC
N.T.S.



INLET PROTECTION WITH STRAW BALES
N.T.S.

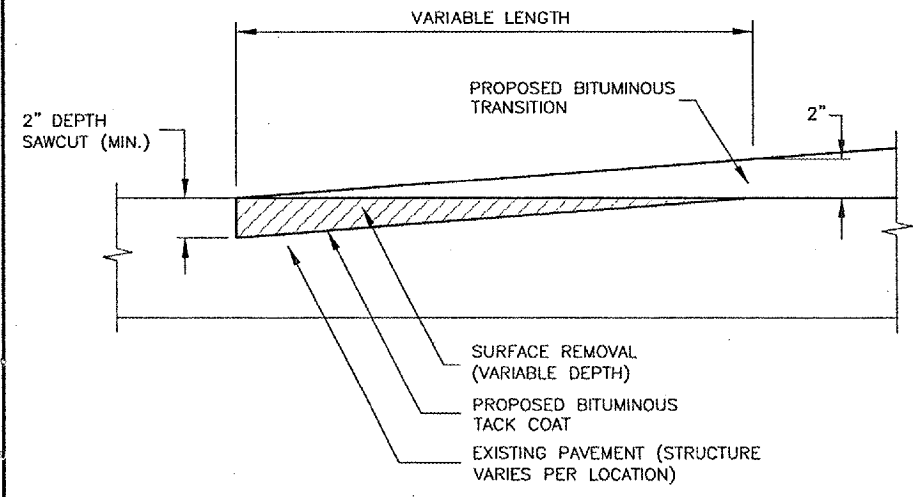


PERSPECTIVE VIEW
SECTION

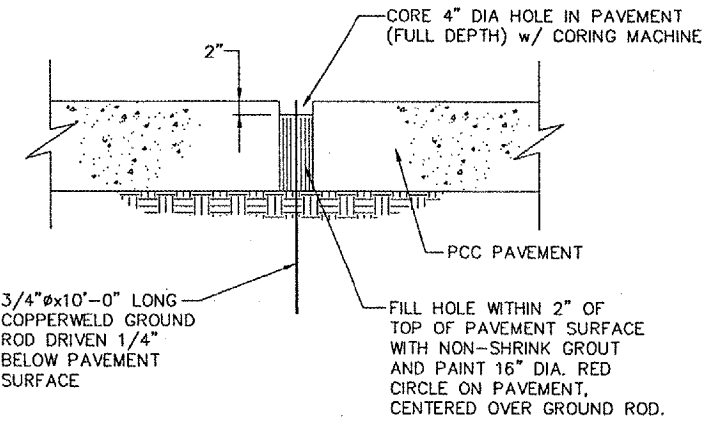
EROSION CONTROL FABRIC FENCE DETAIL
N.T.S.

NOTES

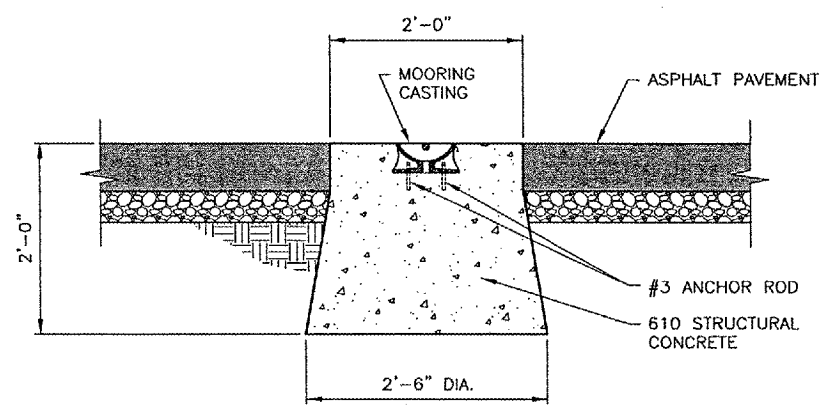
- WOVEN WIRE FENCE TO BE FASTENED SECURELY TO FENCE POSTS WITH WIRE TIES OR STAPLES.
- FILTER CLOTH TO BE FASTENED SECURELY TO WOVEN WIRE FENCE WITH TIES SPACED EVERY 2'-0" AT TOP AND MID SECTION.
- WHEN TWO SECTIONS OF FILTER CLOTH ADJOIN EACH OTHER THEY SHALL BE OVERLAPPED BY 6" MINIMUM AND FOLDED.
- MAINTENANCE SHALL BE PERFORMED AS NEEDED AND MATERIAL REMOVED WHEN "BULGES" DEVELOP IN THE SILT FENCE. MAINTENANCE, WHICH INCLUDES THE REPLACEMENT OF DAMAGED FENCE SHALL BE CONSIDERED INCIDENTAL TO THE COST OF THE EROSION CONTROL FENCE.



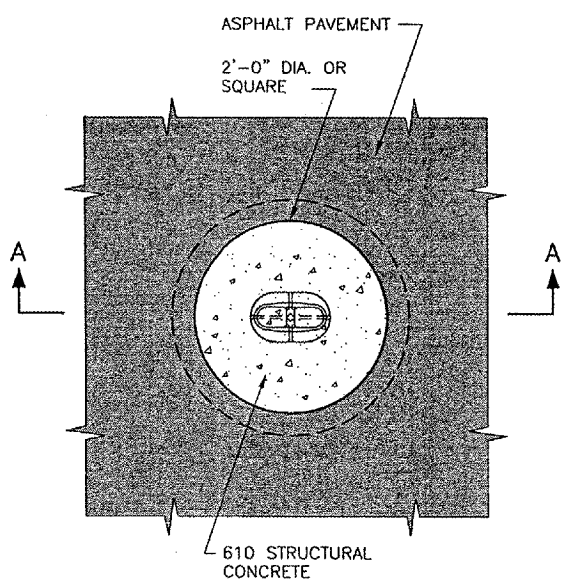
BUTT JOINT DETAIL
N.T.S.



GROUND ROD DETAIL
N.T.S.

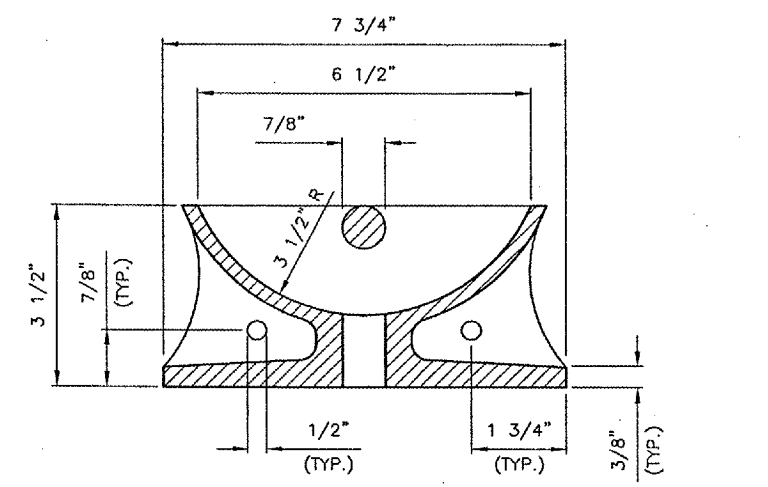


SECTION A-A

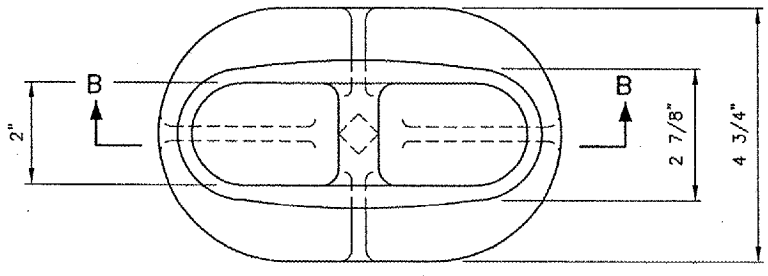


PLAN

MOORING EYE IN PAVEMENT DETAILS
N.T.S.



SECTION B-B



PLAN

- MOORING NOTES**
- MOORING CASTINGS SHALL BE NEENAH SEMI-STEEL AIRPORT MOORING EYE CATALOG NO. R3490 OR APPROVED EQUIVALENT.
 - ANCHOR RODS SHALL BE #3 DEFORMED REBAR, 15" LONG AND SHALL BE BENT DOWNWARD AT 45 DEGREES.



SPRINGFIELD AIRPORT AUTHORITY
ABRAHAM LINCOLN CAPITAL AIRPORT
SPRINGFIELD, ILLINOIS

REHABILITATE SOUTHEAST QUADRANT HANGAR PAVEMENTS
MISCELLANEOUS DETAILS

© Copyright, CMT, Inc.
CMT
 CRAWFORD, MURPHY & TILLY, INC.
 CONSULTING ENGINEERS
 License No. 94-000613

DESIGN BY:	CBG
DRAWN BY:	CMT
CHECKED BY:	CBG
APPROVED BY:	PLW
DATE:	01/27/2006
JOB No:	04035-10-00

ILLINOIS PROJECT SPI-3346