

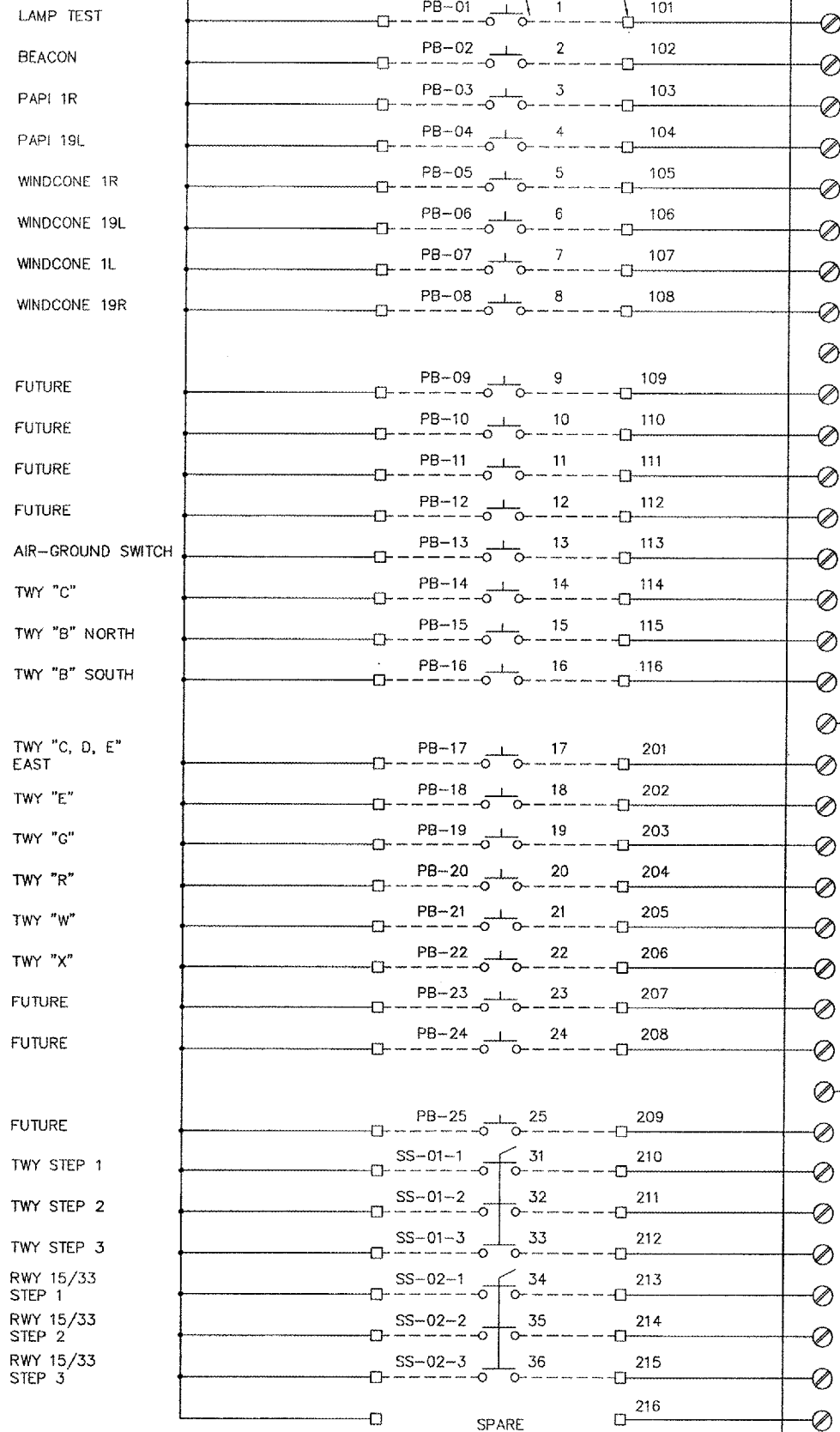
+24VDC
CB-21

L-821 PANEL
TERMINAL BLOCK
TB3

PLC
TERMINAL BLOCK

EXISTING
24VDC INPUT
MODULE 1
RIM-331
REGISTER 1 AND 2

DC COM
24V



EXISTING MODULE 1 MODIFICATIONS
N.T.S.

NOTES:

1. ALL PROPOSED WORK OR ITEMS BEING MODIFIED ARE SHOWN IN BOLD. ALL OTHER ITEMS SHOWN ARE FOR INFORMATIONAL PURPOSES ONLY.
2. CONFIGURE INPUT MODULE TO ADD 5-STEP SELECTOR SWITCH FOR SPARE #1 REGULATOR. MODIFY PLC LOGIC TO ADD 5-STEP REGULATOR.

+24VDC
CB-21

L-821 PANEL
TERMINAL BLOCK
TB3

PLC
TERMINAL BLOCK

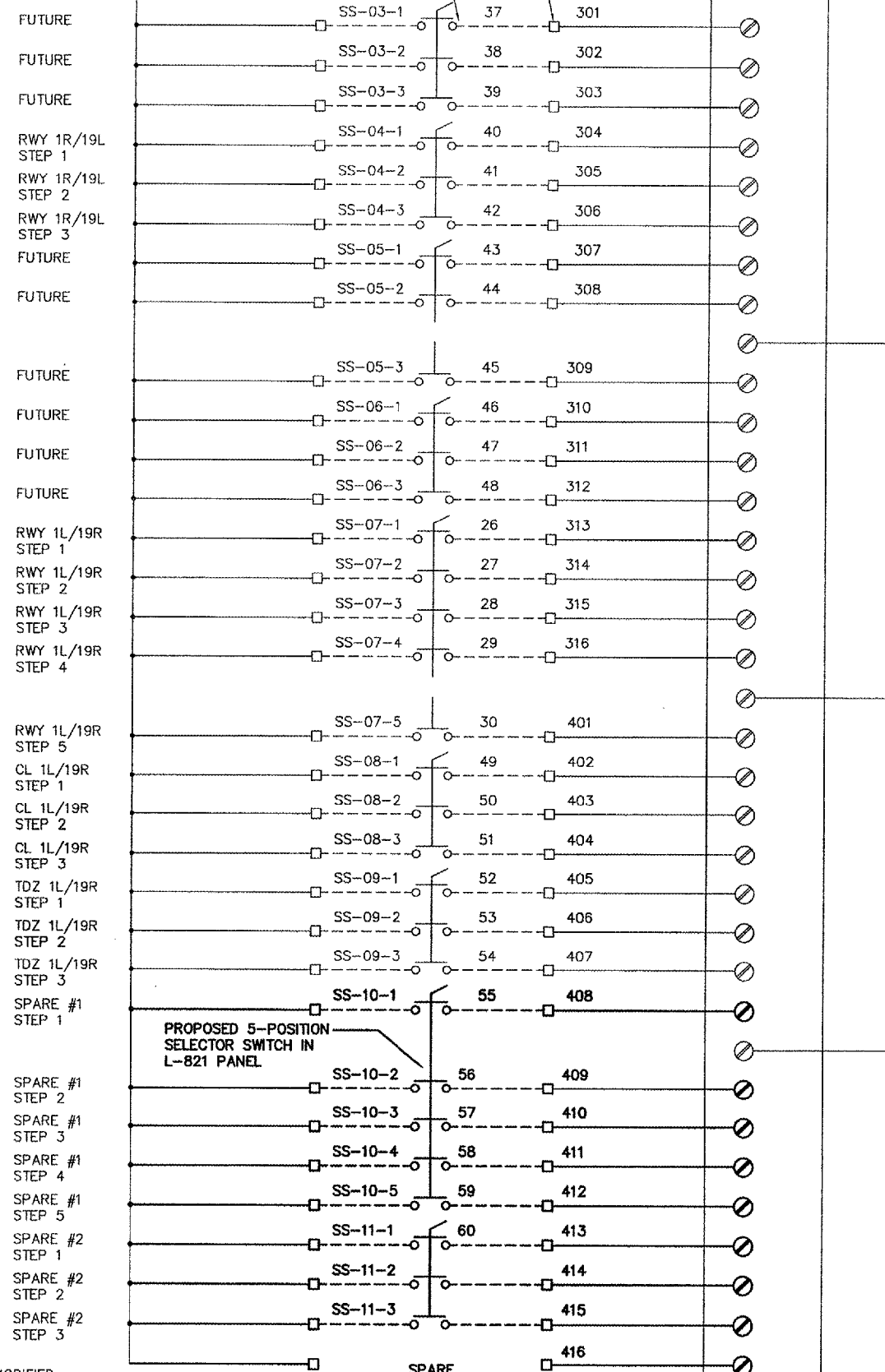
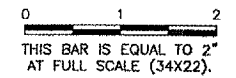
EXISTING
24VDC INPUT
MODULE 2
RIM-331
REGISTER 3 AND 4

DC2400M

DU071

K:\dupage\0425704-Apron_Ph1\Draw\Sheets\FILE: apron-tower1.dwg
 LAYOUT: Layout1
 UPDATE BY: msmejkal
 SURVEY BOOK #
 DATE: Wed 1/18/06 1:05pm
 XREF DWG: tbcint.dwg
 tb.dwg

| REVISIONS | | |
|-----------|----|------|
| NUMBER | BY | DATE |
| | | |
| | | |
| | | |



PROPOSED MODULE 2 MODIFICATIONS
N.T.S.

**DUPAGE AIRPORT
WEST CHICAGO, ILLINOIS
SOUTH FLIGHT CENTER APRON - PHASE 4
TOWER CONTROL DETAILS SHEET 1**

© Copyright CMT, Inc.

CMT
CRAWFORD, MURPHY & TILLY, INC.
CONSULTING ENGINEERS
License No. 184-00685

DPA
DuPage Airport

| | |
|-------------------|-----------------|
| DESIGN BY: | AB |
| DRAWN BY: | JRO |
| CHECKED BY: | AB |
| APPROVED BY: | AB |
| DATE: | 01/13/06 |
| JOB No: | 04257-04-00-00 |
| A.I.P. PROJECT: | 3-17-0017-B18 |
| ILLINOIS PROJECT: | DPA-3391 |
| SHEET | 23 OF 36 SHEETS |