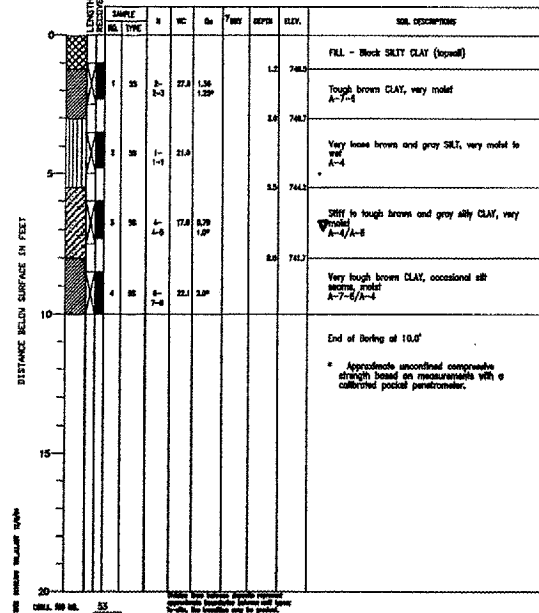


PROJECT: DuPage Airport - Apron Phase 4, South Flight Center, West Chicago, Illinois  
 CLIENT: Crawford, Murphy & Tilly, Inc., Aurora, Illinois  
 BORING: B-1 DATE STARTED: 11-23-04 DATE COMPLETED: 11-23-04 JOB: L-02162



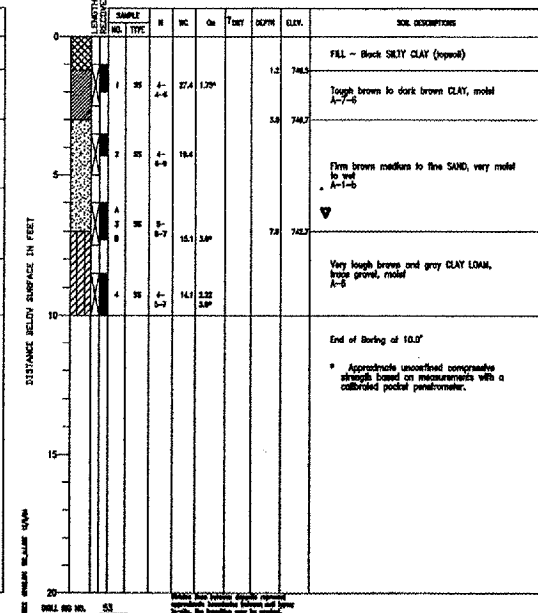
ELEVATIONS  
 GROUND SURFACE: 748.7  
 END OF BORING: 738.7  
 WATER LEVEL OBSERVATIONS  
 WATER TABLE: 5.0'  
 AT END OF BORING: 7.0'  
 24 HOURS



PROJECT: DuPage Airport - Apron Phase 4, South Flight Center, West Chicago, Illinois  
 CLIENT: Crawford, Murphy & Tilly, Inc., Aurora, Illinois  
 BORING: B-2 DATE STARTED: 11-23-04 DATE COMPLETED: 11-23-04 JOB: L-02162



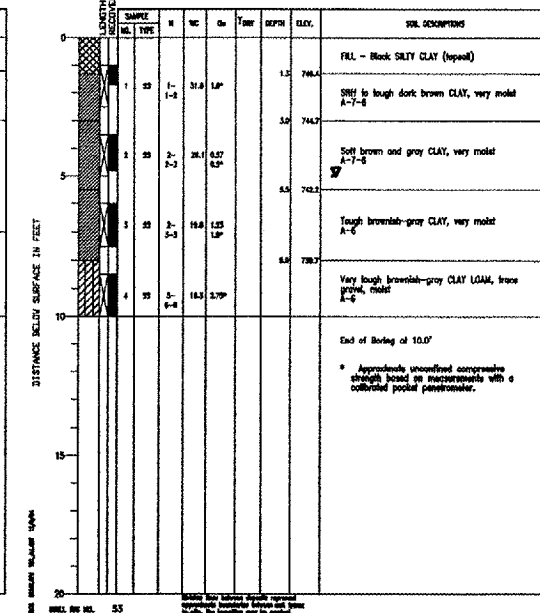
ELEVATIONS  
 GROUND SURFACE: 749.7  
 END OF BORING: 739.7  
 WATER LEVEL OBSERVATIONS  
 WATER TABLE: 5.0'  
 AT END OF BORING: 6.5'  
 24 HOURS



PROJECT: DuPage Airport - Apron Phase 4, South Flight Center, West Chicago, Illinois  
 CLIENT: Crawford, Murphy & Tilly, Inc., Aurora, Illinois  
 BORING: B-3 DATE STARTED: 11-23-04 DATE COMPLETED: 11-23-04 JOB: L-02162



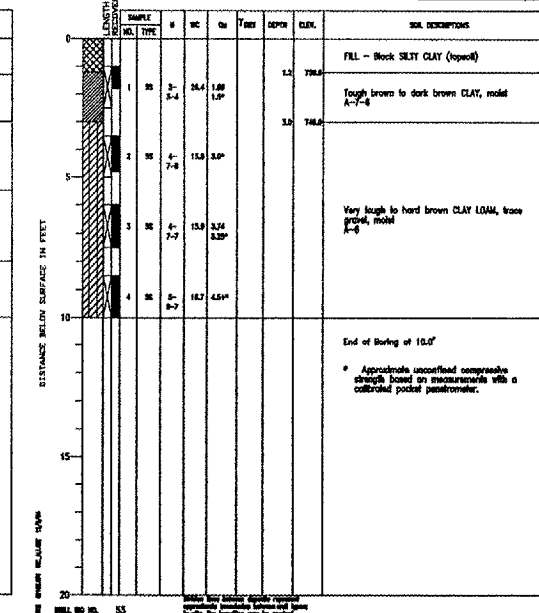
ELEVATIONS  
 GROUND SURFACE: 747.7  
 END OF BORING: 737.7  
 WATER LEVEL OBSERVATIONS  
 WATER TABLE: 5.0'  
 AT END OF BORING: 5.0'  
 24 HOURS



PROJECT: DuPage Airport - Apron Phase 4, South Flight Center, West Chicago, Illinois  
 CLIENT: Crawford, Murphy & Tilly, Inc., Aurora, Illinois  
 BORING: B-4 DATE STARTED: 11-23-04 DATE COMPLETED: 11-23-04 JOB: L-02162



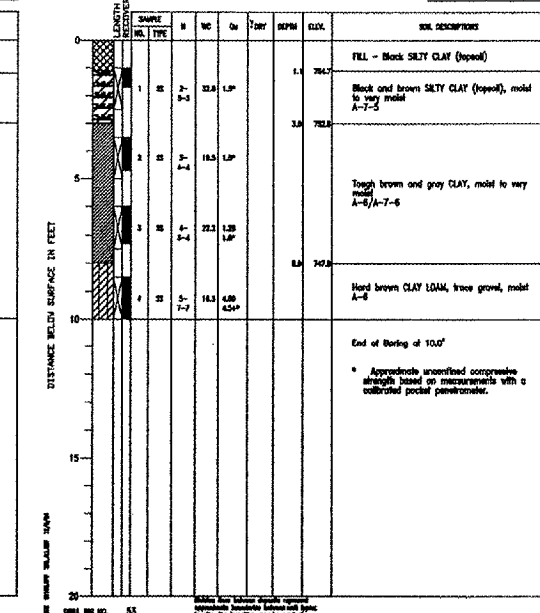
ELEVATIONS  
 GROUND SURFACE: 752.0  
 END OF BORING: 742.0  
 WATER LEVEL OBSERVATIONS  
 WATER TABLE: Dry  
 AT END OF BORING: Dry  
 24 HOURS



PROJECT: DuPage Airport - Apron Phase 4, South Flight Center, West Chicago, Illinois  
 CLIENT: Crawford, Murphy & Tilly, Inc., Aurora, Illinois  
 BORING: B-5 DATE STARTED: 11-23-04 DATE COMPLETED: 11-23-04 JOB: L-02162



ELEVATIONS  
 GROUND SURFACE: 755.8  
 END OF BORING: 745.8  
 WATER LEVEL OBSERVATIONS  
 WATER TABLE: Dry  
 AT END OF BORING: Dry  
 24 HOURS



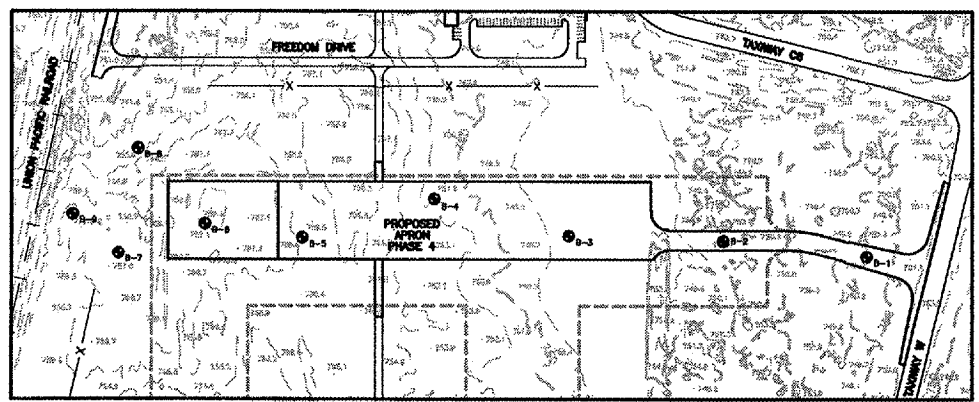
PATH: K:\DupageAp\0425704-Apron...  
 FILE: apron-logs.dwg  
 UPDATE BY: johse  
 SURVEY BOOK #  
 XREF DWG:  
 XREF DWG:  
 DATE: Fri 12/10/04 10:34am

REVISIONS		
NUMBER	BY	DATE

0 1 2  
 THIS BAR IS EQUAL TO 2"  
 AT FULL SCALE (34X22).

DUPAGE AIRPORT  
 WEST CHICAGO, ILLINOIS  
 SOUTH FLIGHT CENTER APRON - PHASE 4  
 ENGINEERING INFO  
 SHEET 1

BORING NO.	NORTHING	EASTING
B-1	1906807.45	521850.36
B-2	1906848.98	521479.86
B-3	1906861.15	521078.67
B-4	1906854.90	520722.44
B-5	1906857.35	520381.25
B-6	1906892.40	520128.67
B-7	1906817.40	519903.67
B-8	1907084.40	519953.82
B-9	1906917.06	519787.27



© Copyright CMT, Inc.  
**CMT**  
 CRAWFORD, MURPHY & TILLY, INC.  
 CONSULTING ENGINEERS  
 License No. 184-000618

DESIGN BY:	MJS
DRAWN BY:	JRO
CHECKED BY:	MJS
APPROVED BY:	
DATE:	01/13/06
JOB No:	04257-04-00-00
A.I.P. PROJECT:	3-17-0017-B18
ILLINOIS PROJECT:	DPA-3391
SHEET	35 OF 36 SHEETS