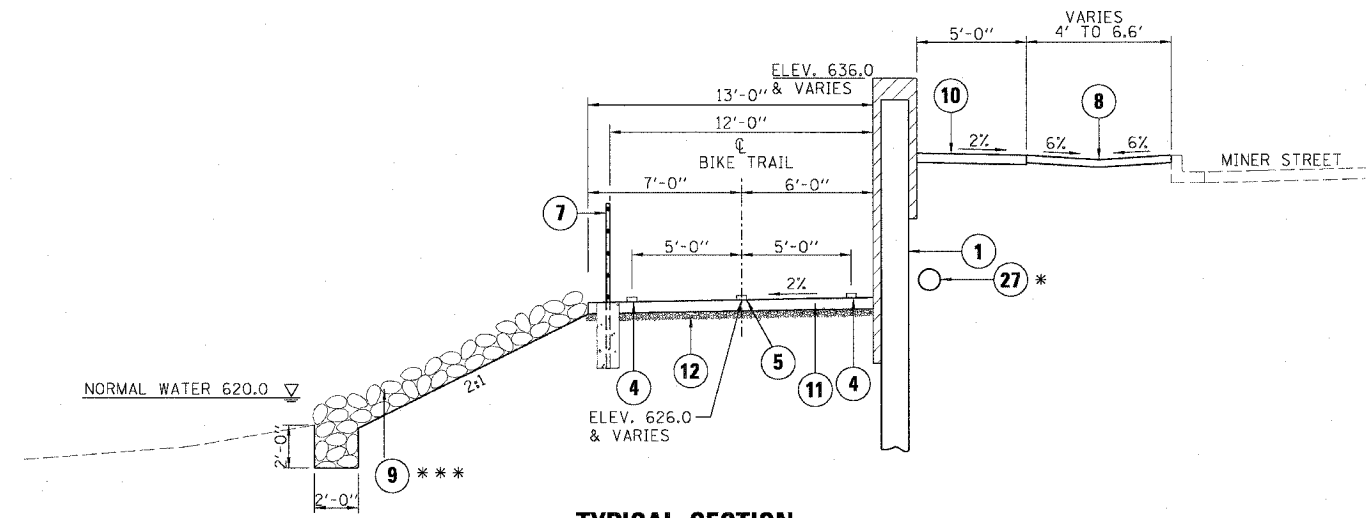
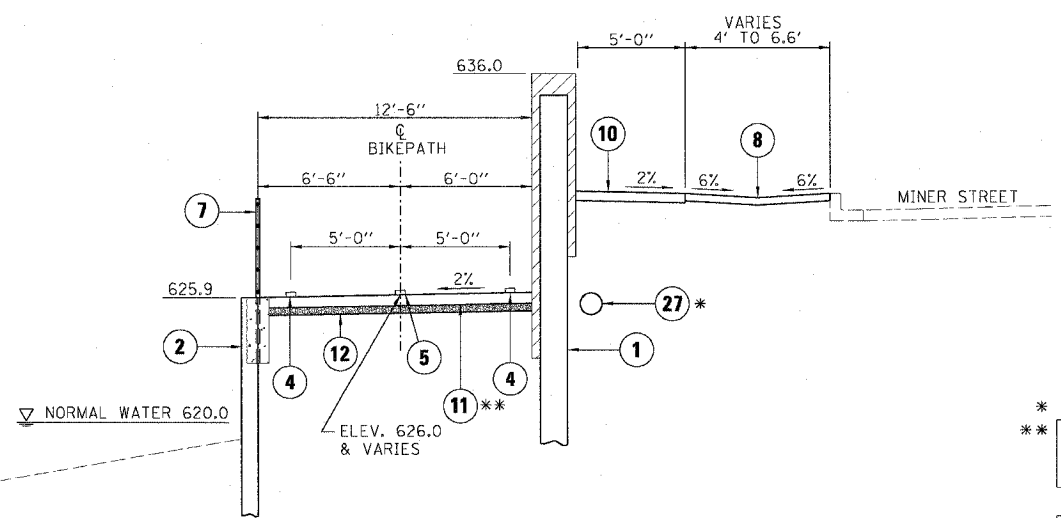


**TYPICAL SECTION  
STA. 4+24 TO STA. 8+00**

SEE SHEET G-9 FOR TYPICAL SECTION STA. 8+00 TO STA. 11+65



**TYPICAL SECTION  
STA. 13+00 TO STA. 17+50**



**TYPICAL SECTION  
STA. 17+50 TO STA. 22+00**

**LEGEND**

- ① FLOODWALL
- ② STEEL SHEET PILE RETAINING WALL
- ③ M-2.12 CURB AND GUTTER
- ④ 4" WHITE THERMOPLASTIC PAVEMENT MARKING
- ⑤ 4" YELLOW THERMOPLASTIC PAVEMENT MARKING
- ⑥ 24" HANDRAIL
- ⑦ 54" HANDRAIL
- ⑧ 6" TOPSOIL AND SEED
- ⑨ STONE DUMPED RIPRAP, CLASS A3 (12" MIN THICKNESS)
- ⑩ 5" PCC SIDEWALK
- ⑪ 6" PCC BIKE TRAIL
- ⑫ 4" SUBBASE GRANULAR MATERIAL, TYPE B
- ⑬ 2" BITUMINOUS CONCRETE SURFACE COURSE
- ⑭ 2 1/4" BITUMINOUS CONCRETE BINDER COURSE
- ⑮ 5" BITUMINOUS BASE COURSE
- ⑯ 6" SUBBASE GRANULAR MATERIAL, TYPE B
- ⑰ PAVEMENT REPLACEMENT
- ⑱ EARTH EXCAVATION
- ⑲ 48" EXPLORATION TRENCH
- ⑳ LEVEE EMBANKMENT
- ㉑ STEEL PLATE BEAM GUARDRAIL, TYPE A (SPECIAL)
- ㉒ 4" WHITE POLYUREA PAVEMENT MARKING
- ㉓ 4" DOUBLE YELLOW POLYUREA PAVEMENT MARKING
- ㉔ 6" PIPE UNDERDRAIN
- ㉕ 4" AGGREGATE SHOULDER
- ㉖ STEEL PLATE BEAM GUARDRAIL, TYPE A
- ㉗ 12" RCP STORM SEWER, TYPE 2, CLASS III

\* STA. 16+52 TO STA. 25+00

\*\* THE BIKE TRAIL PAVEMENT THICKNESS SHALL BE 12" FROM STATION 21+50 TO 21+80. NO ADDITIONAL COMPENSATION WILL BE MADE FOR THE INCREASED THICKNESS. SEE FLOODWALL DRAWINGS FOR MORE DETAILS.

\*\*\* PER IDOT STANDARD ART. 281.04 (d), MINIMUM 12" THICKNESS PLACED ON FILTER FABRIC, NO ADDITIONAL COMPENSATION WILL BE MADE FOR THE INCREASED THICKNESS OF THE STONE DUMPED RIP RAP, CLASS A-3 AT THE LOCATION OF THE TOE TRENCH.

DESIGNED BY: \_\_\_\_\_  
DRAWN BY: \_\_\_\_\_  
CHECKED BY: \_\_\_\_\_  
CHECKED BY: \_\_\_\_\_

01/30/2006 10:00:50 AM P:\P60003332\General\Sh1\02g05.shf