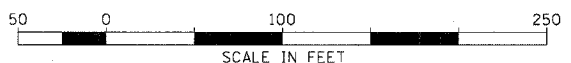
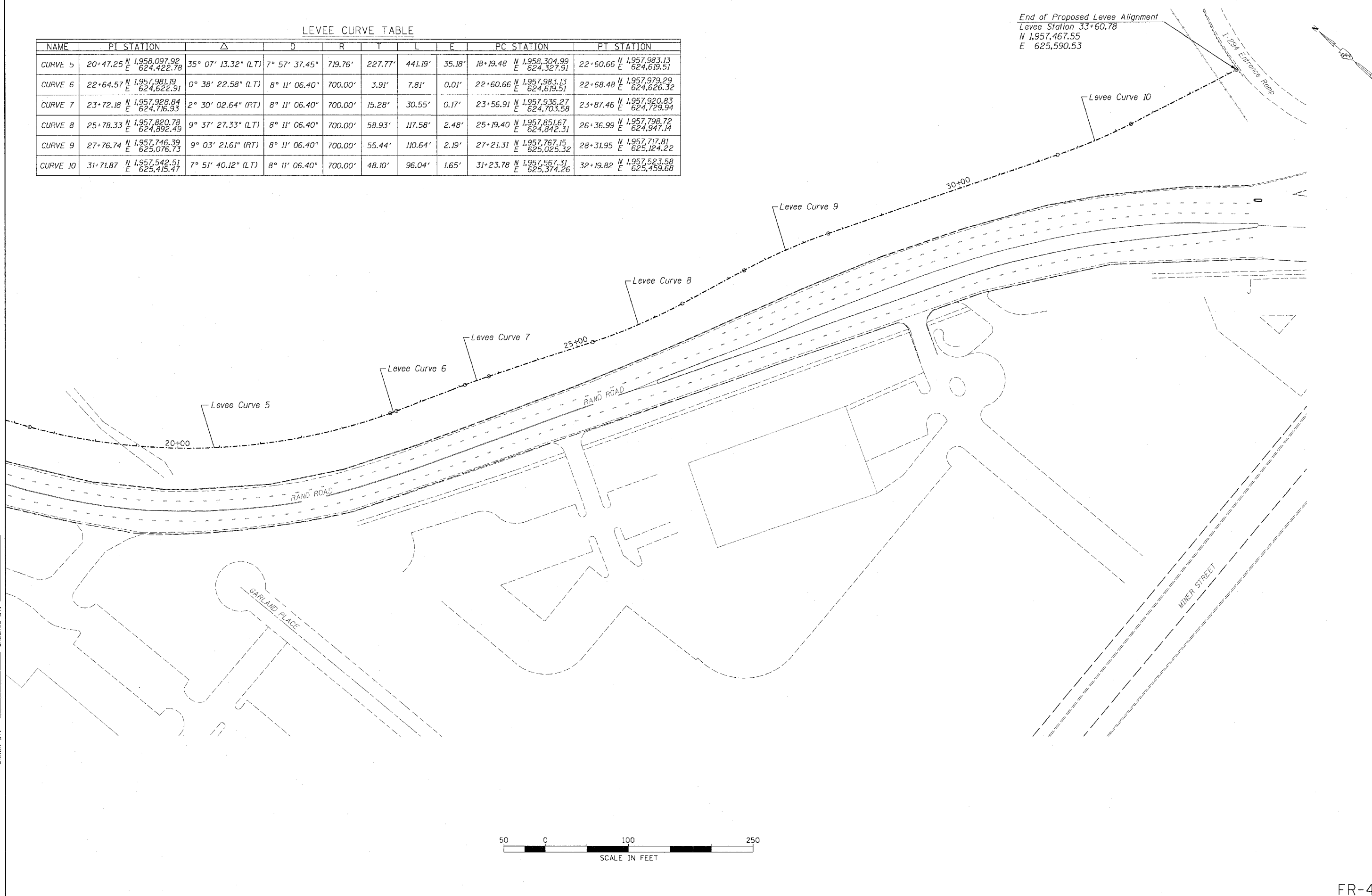


LEVEE CURVE TABLE

| NAME | PI STATION | Δ | D | R | T | L | E | PC STATION | PT STATION |
|----------|--|---------------------|---------------|---------|---------|---------|--------|--|--|
| CURVE 5 | 20+47.25 N 1,958,097.92 E 624,422.78 | 35° 07' 13.32" (LT) | 7° 57' 37.45" | 719.76' | 227.77' | 441.19' | 35.18' | 18+19.48 N 1,958,304.99 E 624,327.91 | 22+60.66 N 1,957,983.13 E 624,619.51 |
| CURVE 6 | 22+64.57 N 1,957,981.19 E 624,622.91 | 0° 38' 22.58" (LT) | 8° 11' 06.40" | 700.00' | 3.91' | 7.81' | 0.01' | 22+60.66 N 1,957,983.13 E 624,619.51 | 22+68.48 N 1,957,979.29 E 624,626.32 |
| CURVE 7 | 23+72.18 N 1,957,928.84 E 624,716.33 | 2° 30' 02.64" (RT) | 8° 11' 06.40" | 700.00' | 15.28' | 30.55' | 0.17' | 23+56.91 N 1,957,936.27 E 624,703.58 | 23+87.46 N 1,957,920.83 E 624,729.94 |
| CURVE 8 | 25+78.33 N 1,957,820.78 E 624,892.49 | 9° 37' 27.33" (LT) | 8° 11' 06.40" | 700.00' | 58.93' | 117.58' | 2.48' | 25+19.40 N 1,957,851.67 E 624,842.31 | 26+36.99 N 1,957,798.72 E 624,947.14 |
| CURVE 9 | 27+76.74 N 1,957,746.39 E 625,076.73 | 9° 03' 21.61" (RT) | 8° 11' 06.40" | 700.00' | 55.44' | 110.64' | 2.19' | 27+21.31 N 1,957,767.15 E 625,025.32 | 28+31.95 N 1,957,717.81 E 625,124.22 |
| CURVE 10 | 31+71.87 N 1,957,542.51 E 625,415.47 | 7° 51' 40.12" (LT) | 8° 11' 06.40" | 700.00' | 48.10' | 96.04' | 1.65' | 31+23.78 N 1,957,567.31 E 625,374.26 | 32+19.82 N 1,957,523.58 E 625,459.68 |

End of Proposed Levee Alignment
Levee Station 33+60.78
N 1,957,467.55
E 625,590.53



DESIGNED BY:
DRAWN BY:
CHECKED BY:
CHECKED BY:

01/30/2006 10:04:07 AM P:\P60003332\General\Sheet\07g13.shx