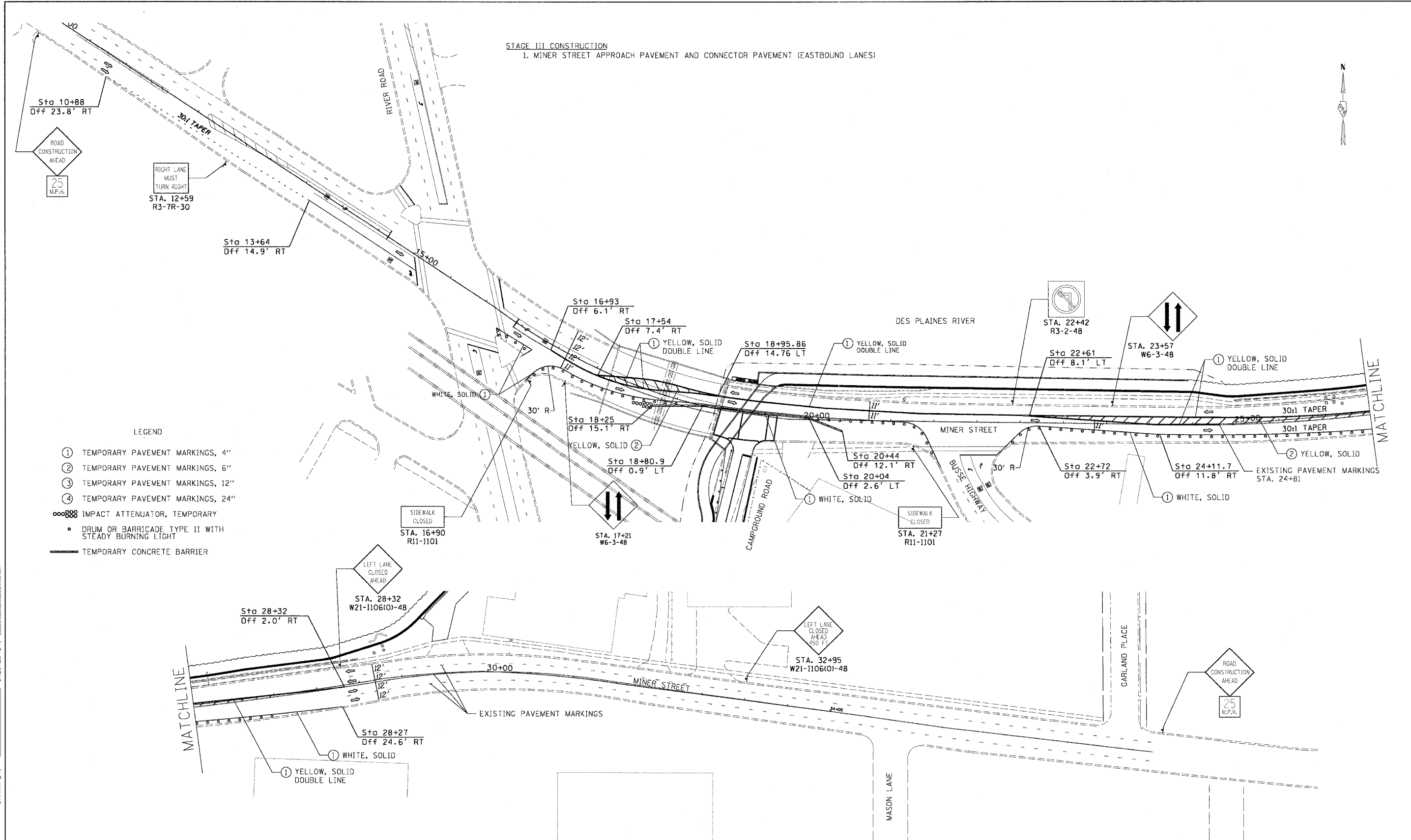


STAGE III CONSTRUCTION  
1. MINER STREET APPROACH PAVEMENT AND CONNECTOR PAVEMENT (EASTBOUND LANES)



- LEGEND
- ① TEMPORARY PAVEMENT MARKINGS, 4"
  - ② TEMPORARY PAVEMENT MARKINGS, 6"
  - ③ TEMPORARY PAVEMENT MARKINGS, 12"
  - ④ TEMPORARY PAVEMENT MARKINGS, 24"
  - IMPACT ATTENUATOR, TEMPORARY
  - DRUM OR BARRICADE TYPE II WITH STEADY BURNING LIGHT
  - TEMPORARY CONCRETE BARRIER

MINER STREET MAINTENANCE OF TRAFFIC MIXTURE REQUIREMENTS

ITEM	AC TYPE	VOIDS	RAP %
* BITUMINOUS BASE COURSE, SUPERPAVE	PG 58-22	2% @ 50 Gry	50

\* TEMPORARY PAVEMENT

NOTE: NO COORDINATE INFORMATION HAS BEEN PROVIDED FOR THE ALIGNMENT SHOWN ON THIS SHEET. THIS ALIGNMENT WAS CREATED USING AERIAL SURVEY THAT HAS NO CONTROL. THIS ALIGNMENT IS USED TO SHOW THE APPROXIMATE LOCATION OF TRAFFIC CONTROL ITEMS.

01/30/2006 04:08:55 PM P:\P60003332\Civil\SH\mot\_sfp3\_50.shd

DESIGNED BY: \_\_\_\_\_  
DRAWN BY: \_\_\_\_\_  
CHECKED BY: \_\_\_\_\_  
CHECKED BY: \_\_\_\_\_