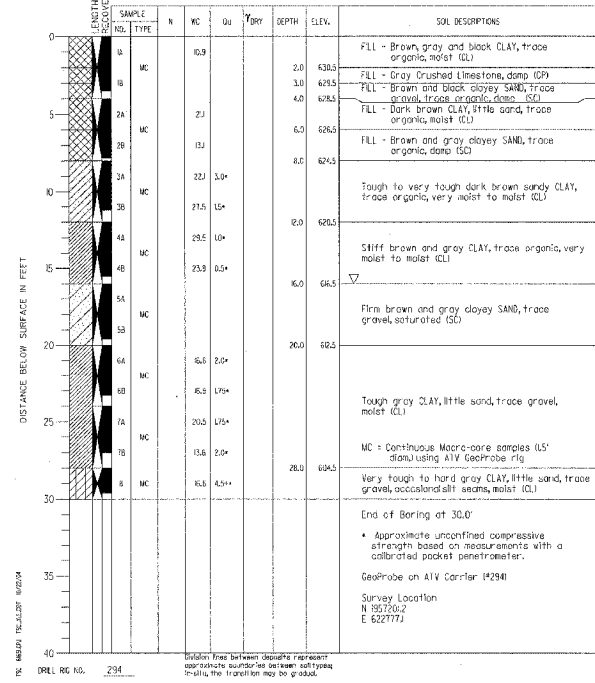
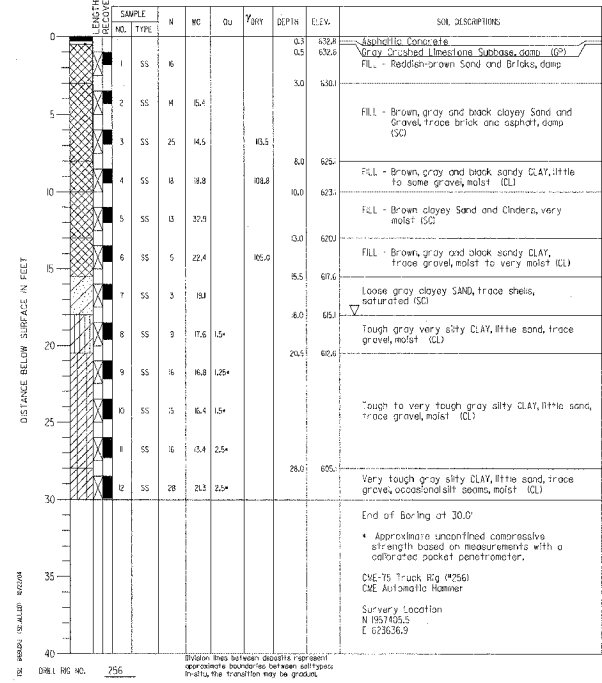


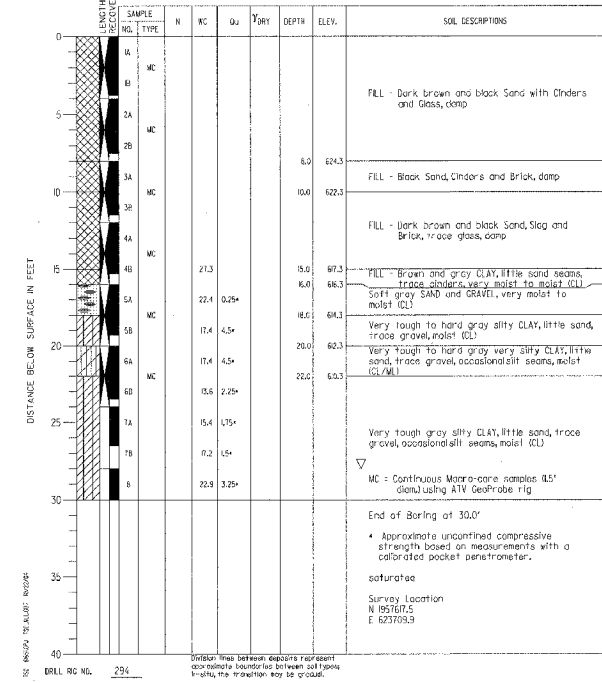
PROJECT: Rand Park Flood Control, Des Plaines, Illinois  
CLIENT: Ground Engineering Consultants, Inc.  
BORING: FB-3 DATE STARTED: 9-9-04 DATE COMPLETED: 9-9-04 JOB: L-61651  
ELEVATIONS: GROUND SURFACE: 632.5 END OF BORING: 602.5  
WATER LEVEL OBSERVATIONS: 8.0' AT END OF BORING  
MILE DRILLING: 24 HOURS



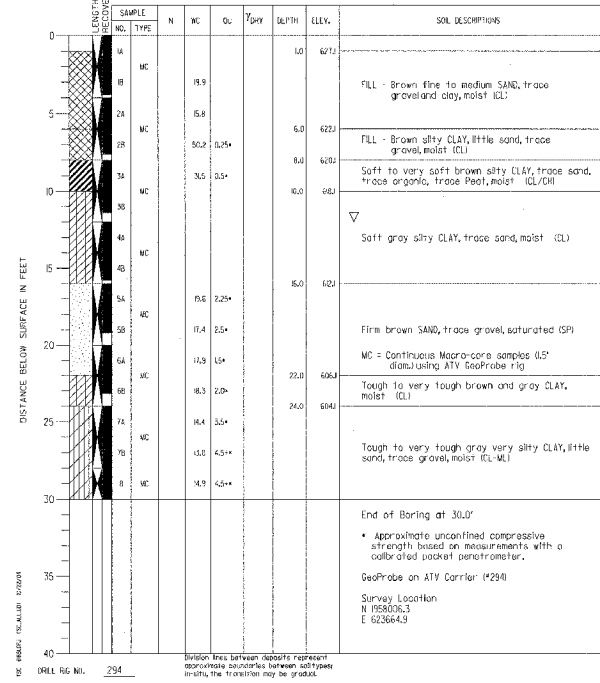
PROJECT: Rand Park Flood Control, Des Plaines, Illinois  
CLIENT: Ground Engineering Consultants, Inc.  
BORING: FB-4 DATE STARTED: 9-9-04 DATE COMPLETED: 9-9-04 JOB: L-61651  
ELEVATIONS: GROUND SURFACE: 633.1 END OF BORING: 603.1  
WATER LEVEL OBSERVATIONS: 8.0' AT END OF BORING  
MILE DRILLING: 24 HOURS



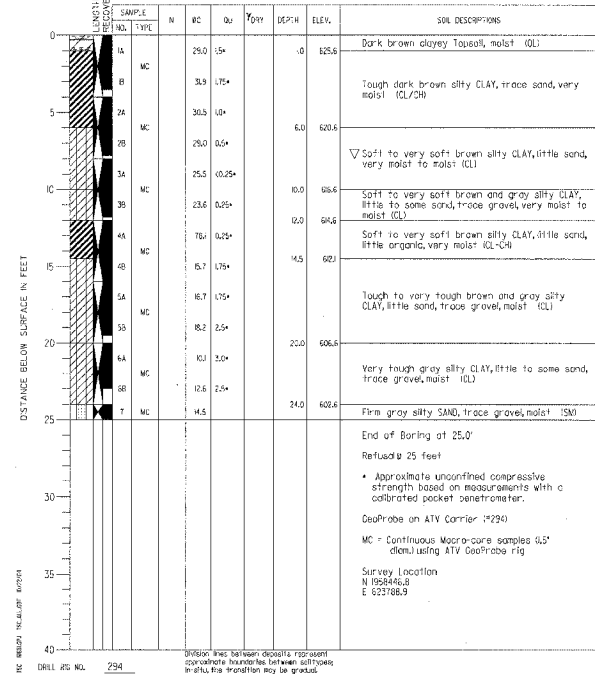
PROJECT: Rand Park Flood Control, Des Plaines, Illinois  
CLIENT: Ground Engineering Consultants, Inc.  
BORING: FB-5 DATE STARTED: 9-10-04 DATE COMPLETED: 9-22-04 JOB: L-61651  
ELEVATIONS: GROUND SURFACE: 632.3 END OF BORING: 607.3  
WATER LEVEL OBSERVATIONS: 28.0' AT END OF BORING  
MILE DRILLING: 24 HOURS



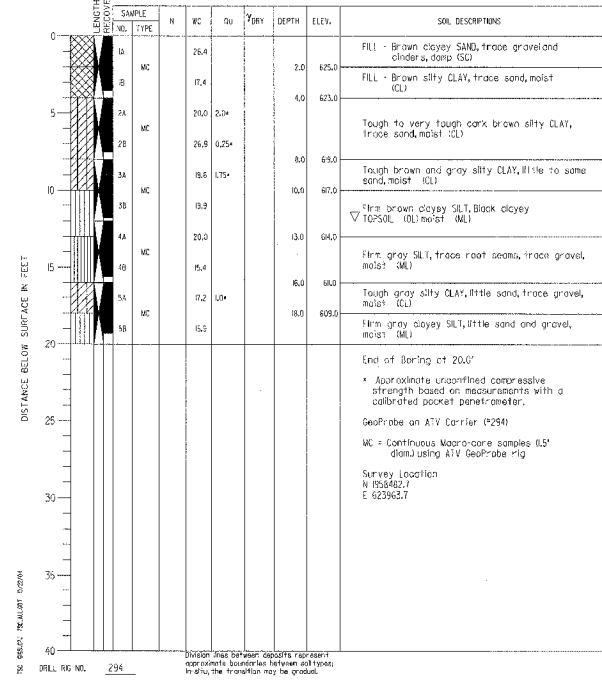
PROJECT: Rand Park Flood Control, Des Plaines, Illinois  
CLIENT: Ground Engineering Consultants, Inc.  
BORING: FB-6 DATE STARTED: 9-13-04 DATE COMPLETED: 9-20-04 JOB: L-61651  
ELEVATIONS: GROUND SURFACE: 629.9 END OF BORING: 599.9  
WATER LEVEL OBSERVATIONS: 8.0' AT END OF BORING  
MILE DRILLING: 24 HOURS



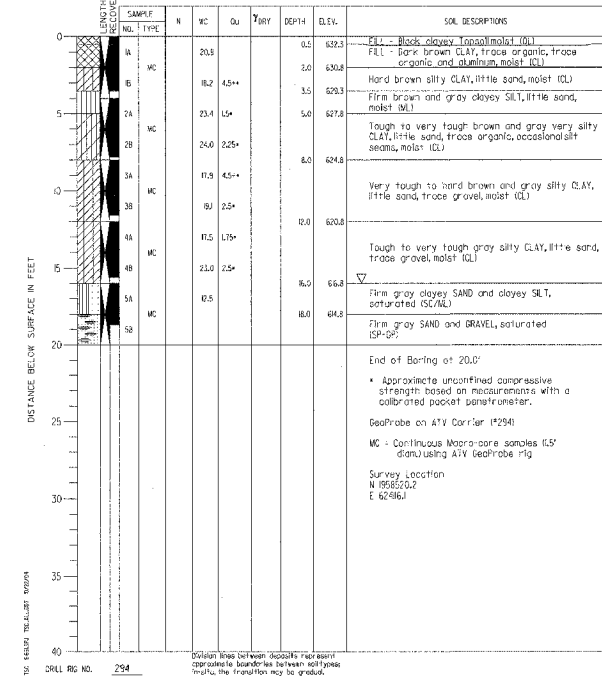
PROJECT: Rand Park Flood Control, Des Plaines, Illinois  
CLIENT: Ground Engineering Consultants, Inc.  
BORING: FB-7 DATE STARTED: 9-13-04 DATE COMPLETED: 9-13-04 JOB: L-61651  
ELEVATIONS: GROUND SURFACE: 626.6 END OF BORING: 601.6  
WATER LEVEL OBSERVATIONS: 8.0' AT END OF BORING  
MILE DRILLING: 24 HOURS



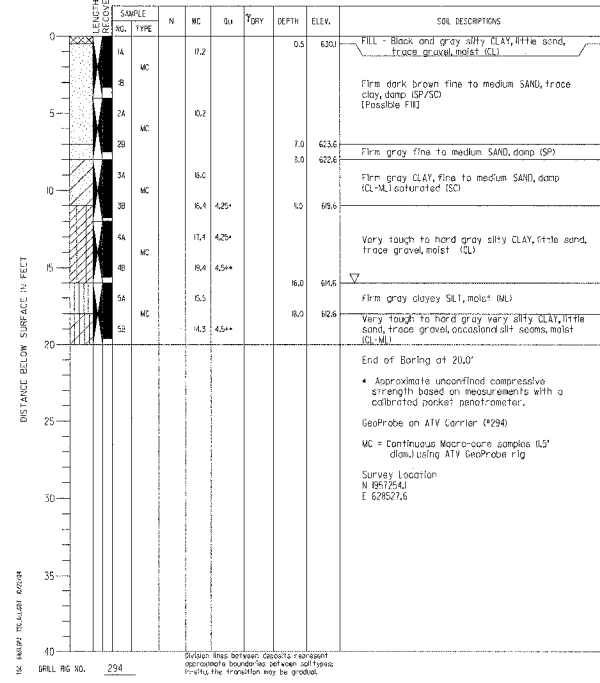
PROJECT: Rand Park Flood Control, Des Plaines, Illinois  
CLIENT: Ground Engineering Consultants, Inc.  
BORING: FB-8 DATE STARTED: 9-13-04 DATE COMPLETED: 9-13-04 JOB: L-61651  
ELEVATIONS: GROUND SURFACE: 627.0 END OF BORING: 607.0  
WATER LEVEL OBSERVATIONS: 8.0' AT END OF BORING  
MILE DRILLING: 24 HOURS



PROJECT: Rand Park Flood Control, Des Plaines, Illinois  
CLIENT: Ground Engineering Consultants, Inc.  
BORING: FB-9 DATE STARTED: 9-10-04 DATE COMPLETED: 9-20-04 JOB: L-61651  
ELEVATIONS: GROUND SURFACE: 637.8 END OF BORING: 602.8  
WATER LEVEL OBSERVATIONS: 8.0' AT END OF BORING  
MILE DRILLING: 24 HOURS



PROJECT: Rand Park Flood Control, Des Plaines, Illinois  
CLIENT: Ground Engineering Consultants, Inc.  
BORING: FB-11 DATE STARTED: 9-10-04 DATE COMPLETED: 9-12-04 JOB: L-61651  
ELEVATIONS: GROUND SURFACE: 630.6 END OF BORING: 600.6  
WATER LEVEL OBSERVATIONS: 8.0' AT END OF BORING  
MILE DRILLING: 24 HOURS



01/30/2006 10:27:36 AM P:\P60003332\Civil\SH\02ESB-06.sht

CHECKED BY: \_\_\_\_\_  
DRAWN BY: \_\_\_\_\_