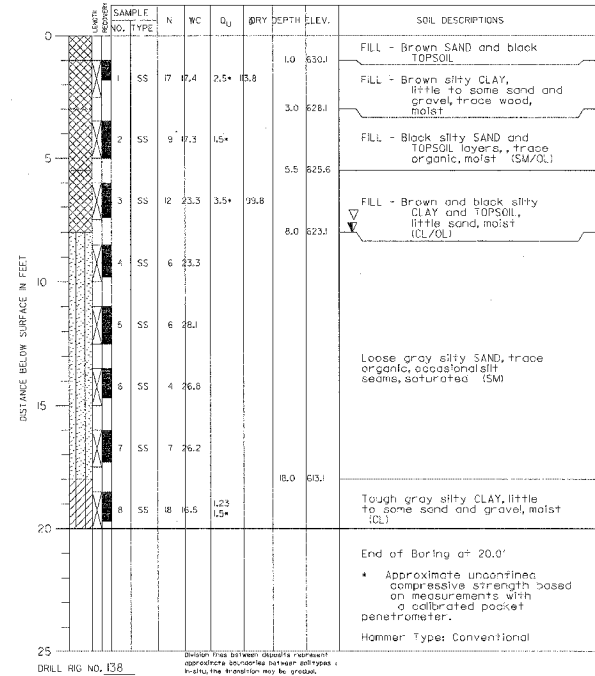


PROJECT Rand Road Flood Control, Rand Road & I-294, Des Plaines, Illinois
 CLIENT Christopher B. Burke Engineering, Ltd., 9575 W. Higgins Rd., Rosemont, IL
 BORING 209 DATE STARTED 5-1-98 DATE COMPLETED 5-1-98 JOB L - 43,618
 ELEVATIONS WATER TABLE
 GROUND SURFACE 631.1 WILE DRILLING 8.0'
 END OF BORING 611.1 AT END OF BORING 7.5'
 24 HOURS



DESIGNED BY: _____ CHECKED BY: _____
 DRAWN BY: _____ CHECKED BY: _____