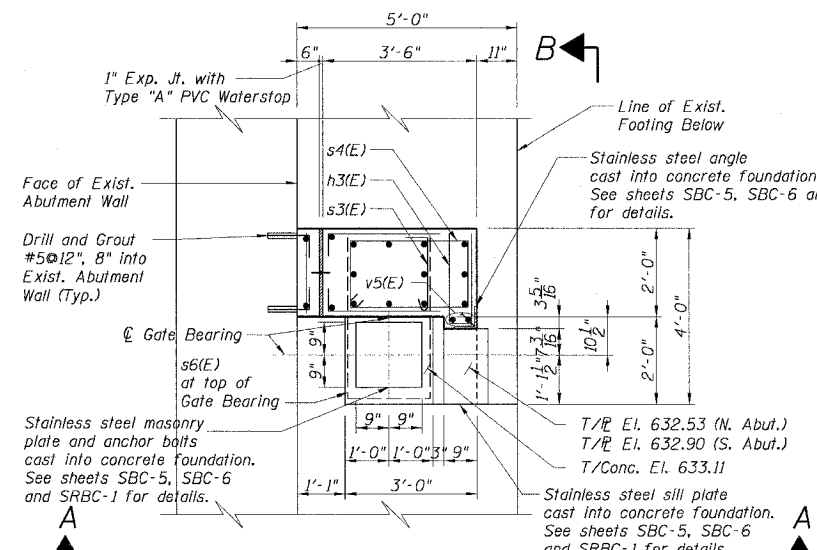
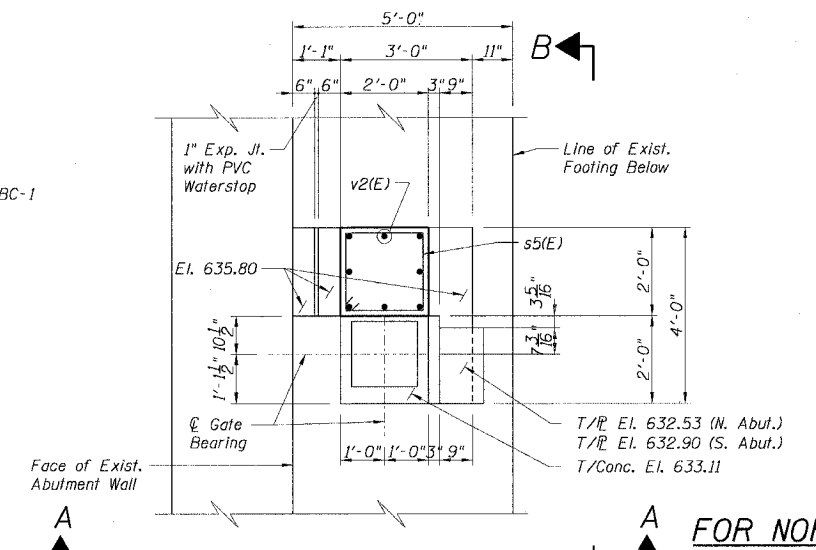


**FOUNDATION PLAN**  
(NORTH ABUTMENT - SHOWN  
(SOUTH ABUTMENT - OPP. HAND)

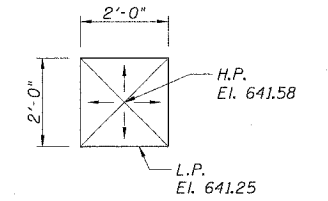


**PLAN AT EL. 633.11**  
(NORTH ABUTMENT - SHOWN  
(SOUTH ABUTMENT - OPP. HAND)



**PLAN AT EL. 635.80**  
(NORTH ABUTMENT - SHOWN  
(SOUTH ABUTMENT - OPP. HAND)

**NOTE:**  
1. For size and location of pocket in top of foundation for shear lugs welded to masonry plate see sheet SRBC-1.

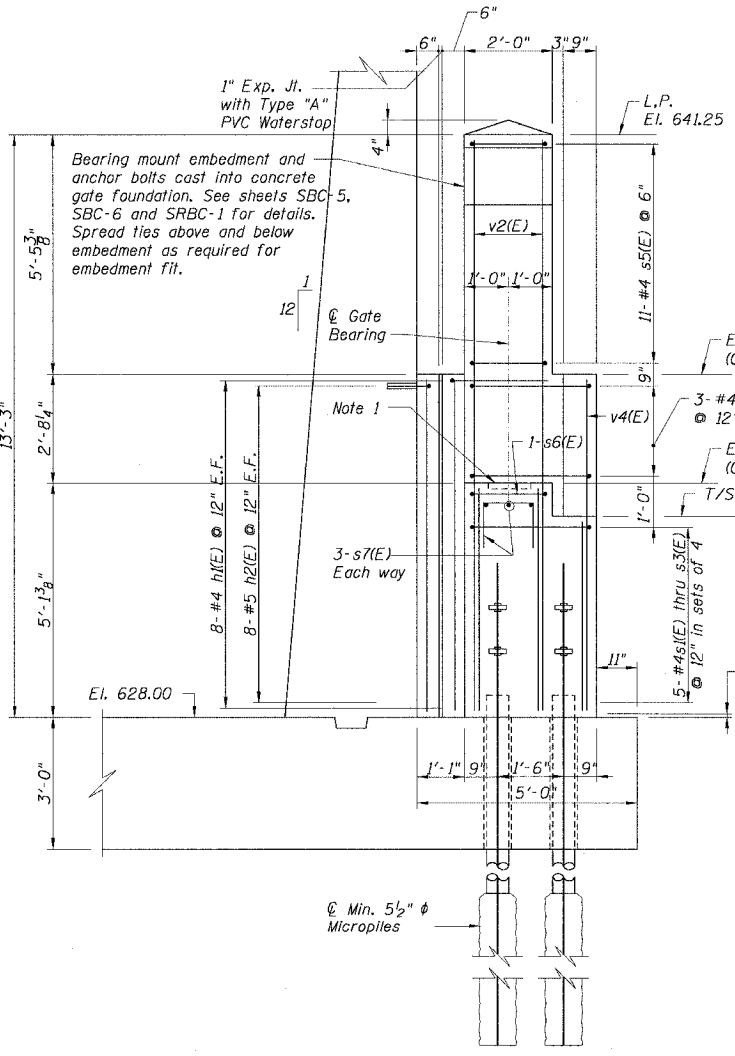


**TOP PLAN**

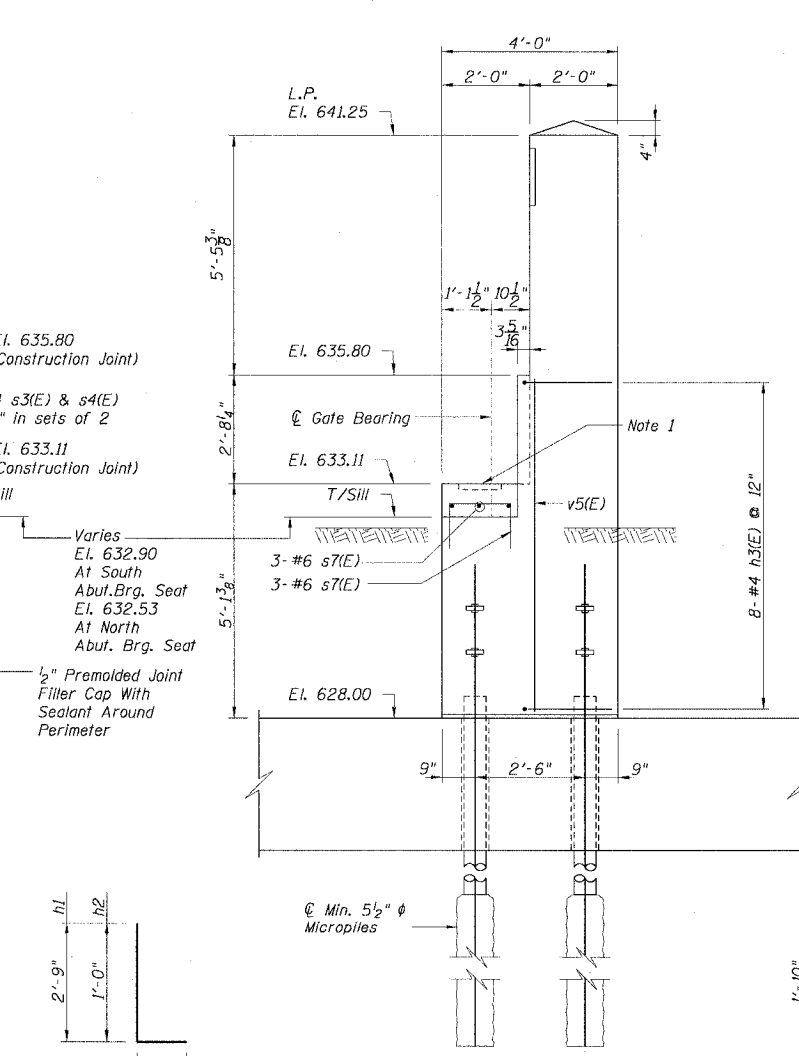
**BILL OF MATERIAL FOR NORTH AND SOUTH FOUNDATIONS**

Bar	No.	Size	Length	Shape
h1(E)	32	#4	3'-5"	┌
h2(E)	32	#5	1'-8"	┌
h3(E)	16	#4	4'-1"	┌
s1(E)	10	#4	14'-0"	┌
s2(E)	20	#4	3'-9"	┌
s3(E)	16	#4	2'-9"	┌
s4(E)	6	#4	9'-5"	┌
s5(E)	22	#4	7'-5"	┌
s6(E)	2	#4	9'-0"	┌
s7(E)	12	#6	6'-11"	┌
v1(E)	10	#9	4'-11"	┌
v2(E)	16	#9	12'-10"	┌
v3(E)	4	#9	4'-6"	┌
v4(E)	10	#9	7'-7"	┌
v5(E)	4	#6	7'-7"	┌
v6(E)	4	#9	7'-7"	┌
Structure Excavation			Cu. Yd.	18
Concrete Structures			Cu. Yd.	7
Reinforcement Bars, Epoxy Coated			Pound	1970
Micropiles			Each	8
Test Piles			Each	1
Protective Coat			Sq. Yd.	20

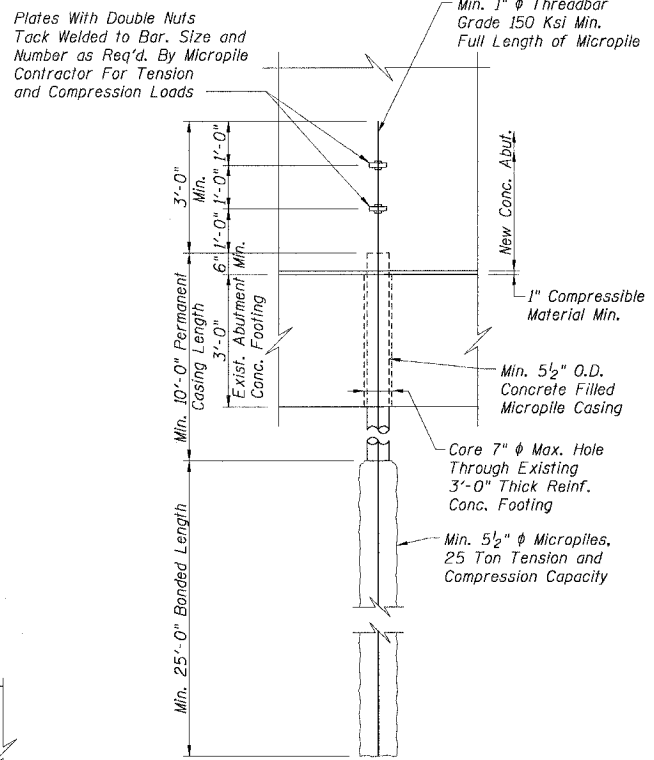
Reinforcement bars designated (E) shall be epoxy coated.



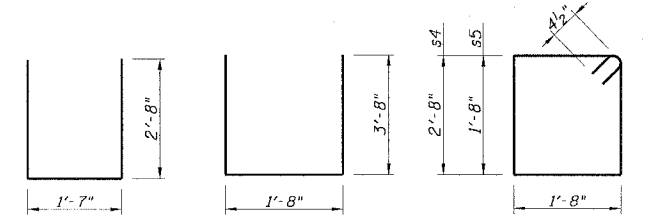
**ELEVATION A-A**



**ELEVATION B-B**



**TYPICAL MICROPILE DETAIL**



**BAR s7(E) BARS s6(E) BARS s4(E) & s5(E)**

REVISION	
DATE	DESCRIPTION

CHECKED BY: DPV  
DRAWN BY: EMT

PLANS PREPARED BY:  
**CTE | AECOM**

CTE  
303 East Wacker Drive, Suite 600, Chicago, Illinois 60601-5276  
T 312.938.0300 F 312.938.1109 www.cte.aecom.com

SCALE: NONE  
**SBC-2** FR-416