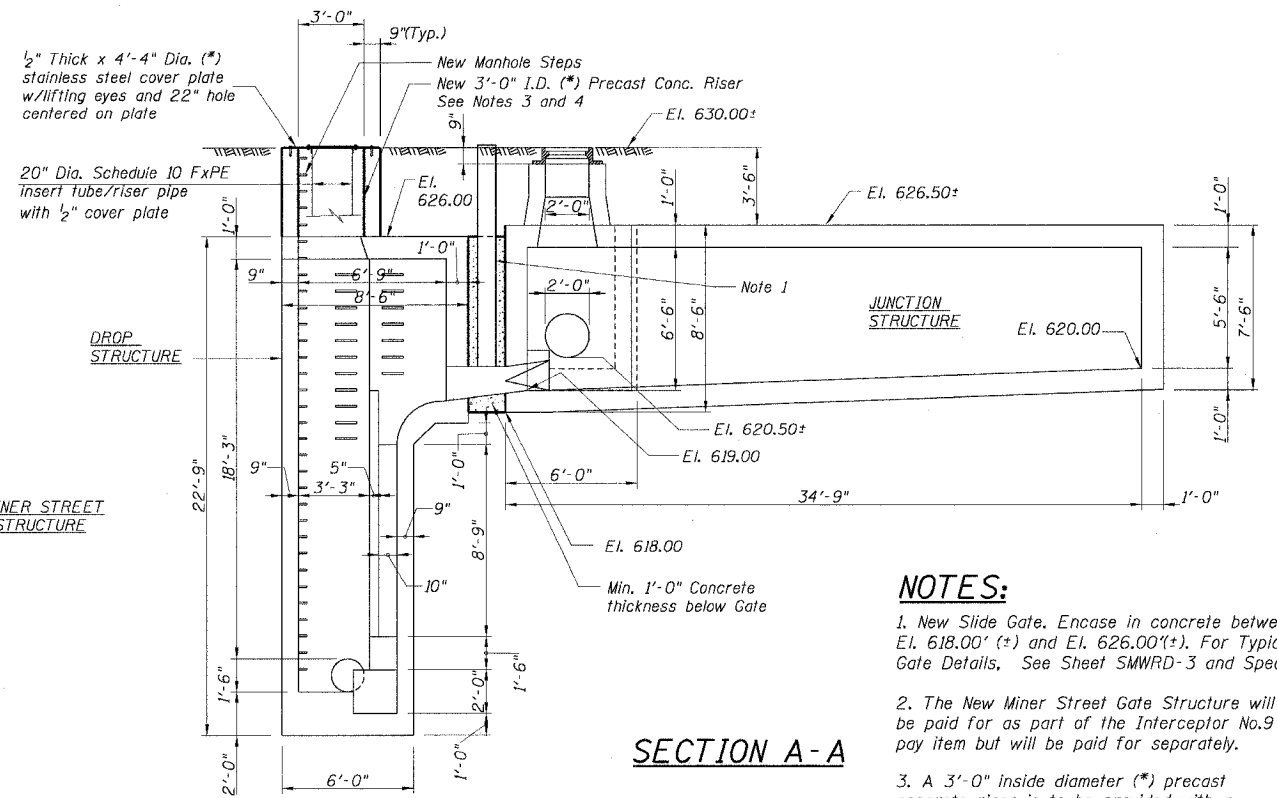
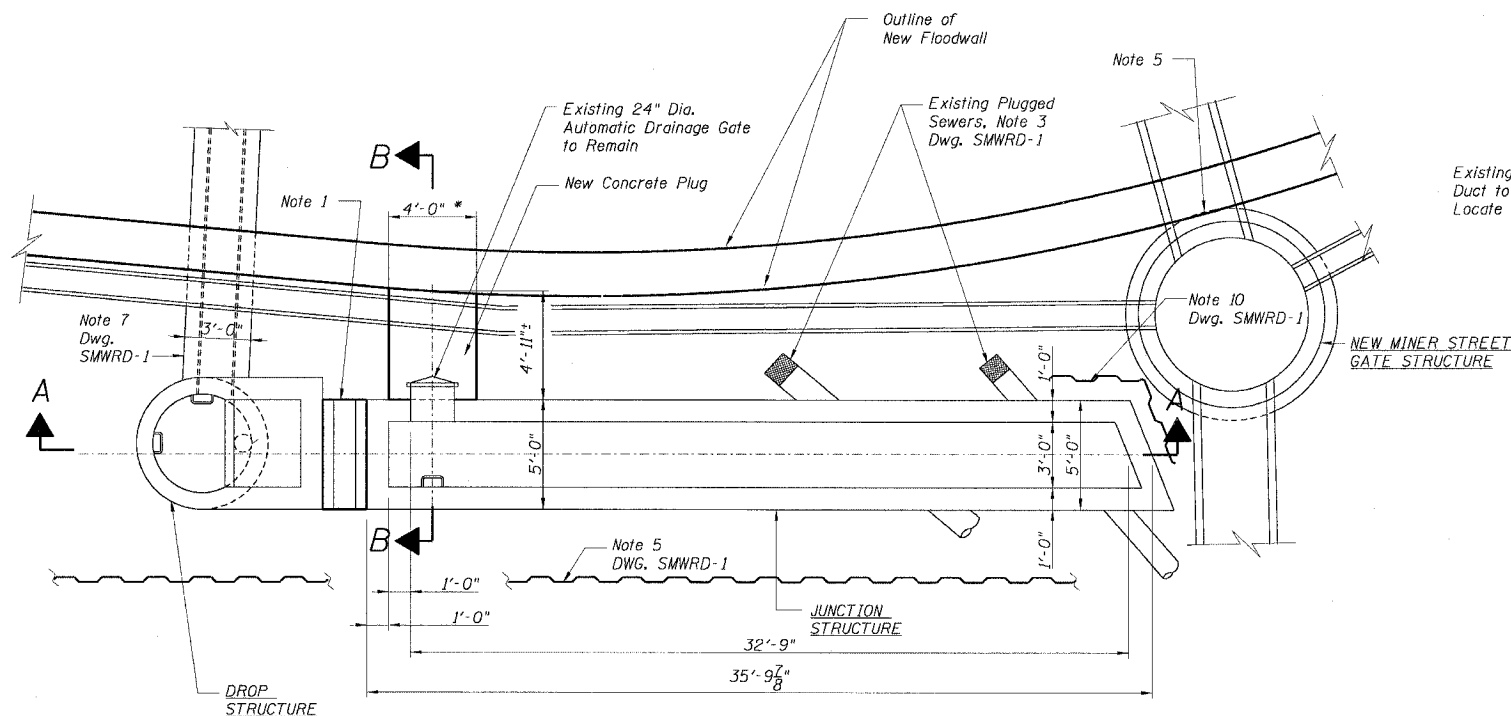


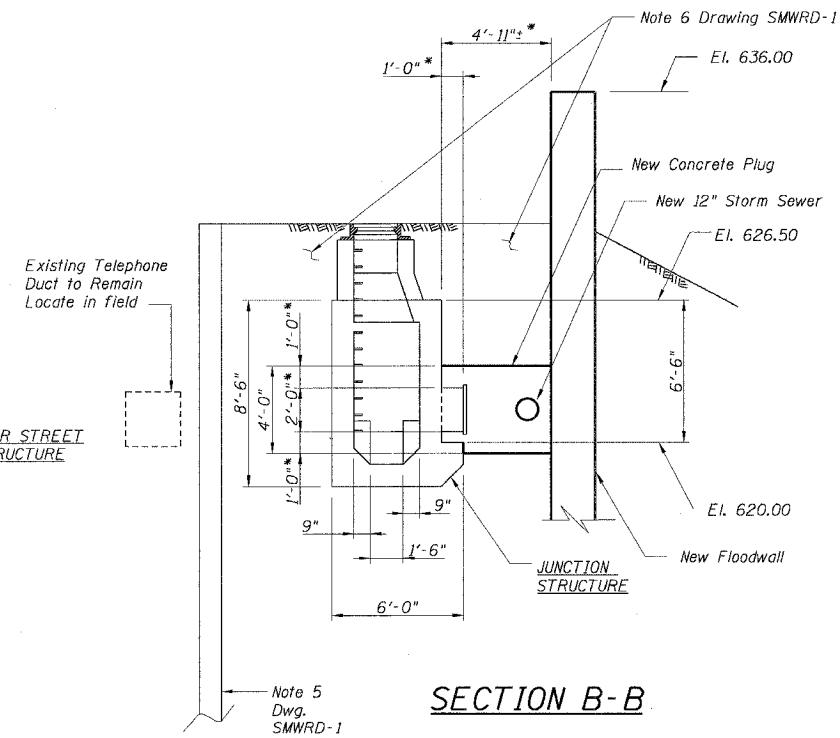
PLAN



SECTION A-A



SECTIONAL PLAN



SECTION B-B

NOTES:

1. New Slide Gate. Encase in concrete between El. 618.00' (±) and El. 626.00' (±). For Typical Gate Details, See Sheet SMWRD-3 and Specifications.

2. The New Miner Street Gate Structure will not be paid for as part of the Interceptor No.9 Structure pay item but will be paid for separately.

3. A 3'-0" inside diameter (*) precast concrete riser is to be provided with a stainless steel cover plate, insert tube, and a second smaller cover plate (a lid) all fabricated of 316 stainless steel. These items are provided as part of the Interceptor No. 9 Structure pay item. The insert tube is to act as a standpipe when inverted. The flange for the insert tube is to have bolt holes to match the fabricated cover so that in the stored position, the lid of can be bolted down through the holes in the flange. In the standpipe position, the same bolts will be used to secure it in position. Provide stainless steel bolts welded to the manhole cover plate with adequate length to bolt through both the combined thickness of the standpipe/insert tube flange and lid. Standpipe/insert tube flange, manhole cover plate and lid shall be fabricated of 316 stainless steel. Tube shall be 20" diameter schedule 10 stainless steel and shall be 6 feet long. The flange shall be minimum 1/2" thick and welded to the tube. Provide 1/2" thick cover plate and lid with bolt holes matching the insert tube flange. Provide two lifting eyes mounted 180 degrees apart on both ends of the insert tube.

4. Riser section and seals shall be 3'-0" inside diameter precast reinforced concrete pipe in accordance with ASTM C478, with an inner and outer cage of circular reinforcement. Provide six (6) - 5/8" diameter stainless steel all-thread rods at 60 degrees, cast into top of riser by Precaster for anchoring stainless steel plate. Anchor rods shall be 16" long with minimum 12" embedment into precast and with stainless steel nuts and washers each end.

5. Field verify Base Slab fit with Floodwall prior to fabrication of Gate Structure.

6. Maintain excavation dewatering to minimum 2 feet below bottom of excavation until all backfill is in place.

LEGEND:

* - Indicates Dimension to be Determined or Verified in Field.

REVISION	
DATE	DESCRIPTION

PLANS PREPARED BY:

CTE | AECOM

CTE
303 East Wacker Drive, Suite 600, Chicago, Illinois 60601-5276
T 312.938.0300 F 312.938.1109 www.cte.aecom.com

SCALE: NONE

SMWRD-2 FR-416