

THE LOCATION, SIZE AND TYPE OF MATERIAL OF EXISTING UNDERGROUND UTILITIES INDICATED ON THE PLANS IS NOT REPRESENTED AS BEING ACCURATE, SUFFICIENT OR COMPLETE. IT SHALL BE THE CONTRACTOR'S RESPONSIBILITY TO DETERMINE THE ACTUAL LOCATION OF ALL SUCH FACILITIES, INCLUDING SERVICE CONNECTIONS TO UNDERGROUND UTILITIES. PRIOR TO CONSTRUCTION, THE CONTRACTOR SHALL NOTIFY THE UTILITY COMPANIES OF HIS OPERATIONAL PLANS AND SHALL OBTAIN FROM THE RESPECTIVE UTILITY COMPANIES DETAILED INFORMATION AND ASSISTANCE RELATIVE TO THE LOCATION OF THEIR FACILITIES AND THE WORKING SCHEDULE OF THE COMPANIES FOR REMOVAL OR ADJUSTMENT WHERE REQUIRED. IN THE EVENT AN UNEXPECTED UTILITY INTERFERENCE IS ENCOUNTERED DURING CONSTRUCTION, THE CONTRACTOR SHALL IMMEDIATELY NOTIFY THE UTILITY COMPANY OF JURISDICTION. THE ENGINEER SHALL ALSO BE IMMEDIATELY NOTIFIED. ANY SUCH MAINS AND SERVICES SHALL BE RESTORED TO SERVICE AT ONCE AND PAID FOR BY THE CONTRACTOR AT NO ADDITIONAL COST TO THE CONTRACT.

CALL J.U.L.I.E. FOR UTILITY INFORMATION AT 1-800-892-0123.

ELECTRICAL REMOVAL QUANTITIES			
ITEM NO.	DESCRIPTION	UNIT	QUANTITY
AR125901	REMOVE STAKE MOUNTED LIGHT	EACH	42
AR125902	REMOVE BASE MOUNTED LIGHT	EACH	8
AR125904	REMOVE TAXI GUIDANCE SIGN	EACH	3

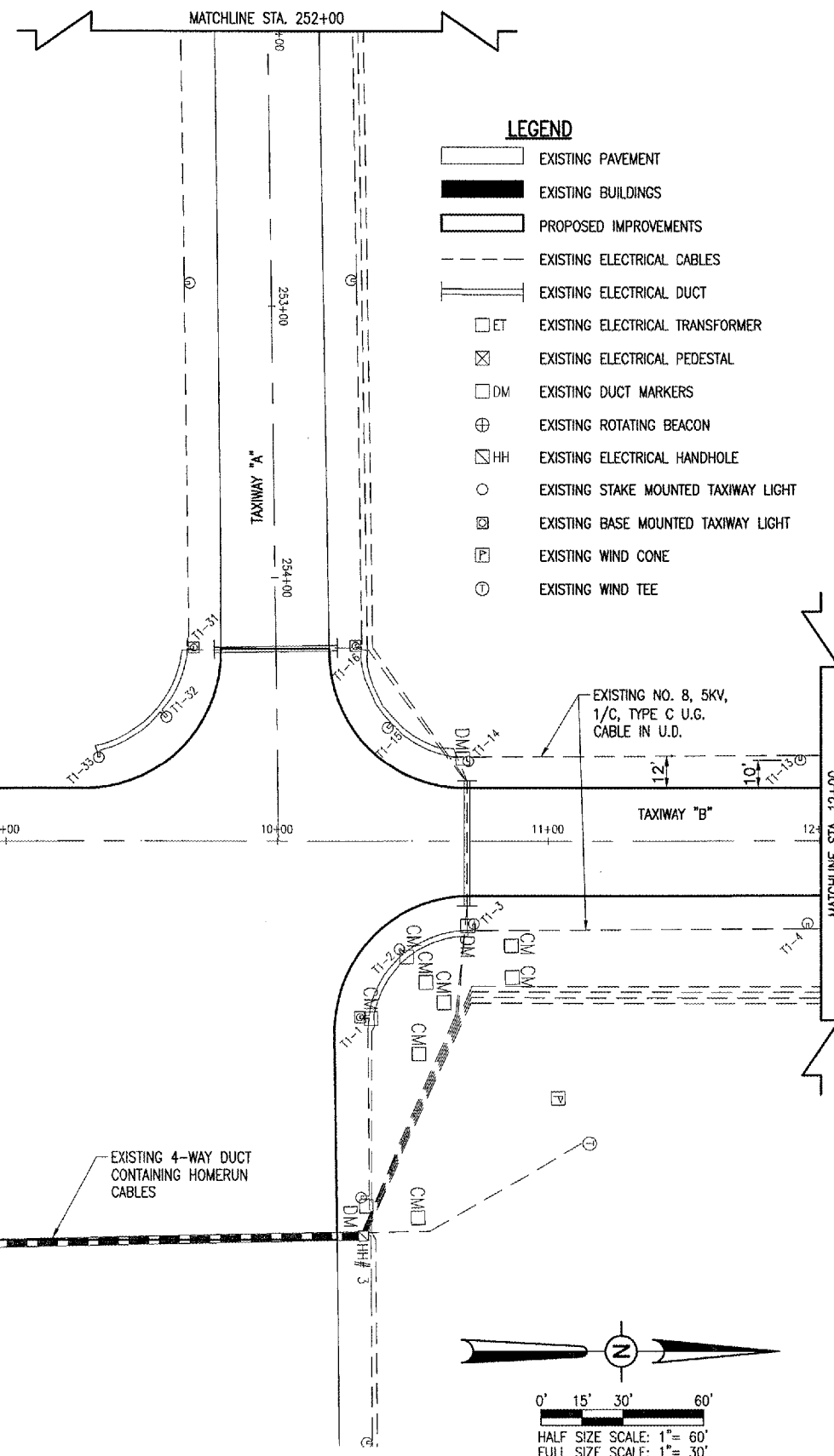
LIGHT AND TAXI GUIDANCE SIGN REMOVAL NOTES

THE FOLLOWING LIGHTS WILL BE REMOVED AS PART OF THE LIGHTING IMPROVEMENT PORTION OF THE PROJECT: T1-1 THROUGH T1-16, T2-1 THROUGH T2-34, AND TAXI GUIDANCE SIGNS: TS-2 THROUGH TS-4.

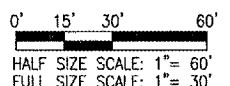
THE FIXTURES AND FOUNDATIONS WILL BE REMOVED IN THEIR ENTIRETY AND THE SALVAGEABLE EQUIPMENT TURNED OVER TO THE AIRPORT MANAGER, AT HIS DISCRETION. ALL FIXTURES NOT CLAIMED BY THE AIRPORT WILL BE DISPOSED OF OFF THE AIRPORT SITE AT THE CONTRACTOR'S EXPENSE. ALL LABOR, MATERIALS, DISPOSAL, COORDINATION, AND INCIDENTALS REQUIRED TO COMPLETE THE TASK OF REMOVING THE LIGHTS AND SIGNS WILL BE CONSIDERED INCIDENTAL TO THE ITEMS AND NO ADDITIONAL COMPENSATION WILL BE ALLOWED.

THE CONTRACTOR IS REQUIRED TO FILL IN ALL HOLES AND DEPRESSIONS RESULTING FROM THE LIGHT AND SIGN REMOVALS, WITH EARTH FROM OFF SITE. THE AREAS SHALL BE COMPACTED TO PREVENT FUTURE SETTLEMENT. EACH REMOVAL LOCATION SHALL BE FERTILIZED, SEEDED, AND MULCHED IN ACCORDANCE WITH ITEMS 901 AND 908 RESPECTIVELY, IF OUTSIDE THE PROPOSED GRADING LIMITS OF THE PAVING PORTION OF THE PROJECT.

- AR125901 REMOVE STAKE MOUNTED LIGHT _____ 42 EACH
- AR125902 REMOVE BASE MOUNTED LIGHT _____ 8 EACH
- AR125904 REMOVE TAXI GUIDANCE SIGN _____ 3 EACH



- LEGEND**
- [Solid Line] EXISTING PAVEMENT
 - [Solid Black Area] EXISTING BUILDINGS
 - [Dashed Line] PROPOSED IMPROVEMENTS
 - [Dashed Line] EXISTING ELECTRICAL CABLES
 - [Dashed Line] EXISTING ELECTRICAL DUCT
 - [Square with X] EXISTING ELECTRICAL TRANSFORMER
 - [Square with X] EXISTING ELECTRICAL PEDESTAL
 - [Square with DM] EXISTING DUCT MARKERS
 - [Circle with +] EXISTING ROTATING BEACON
 - [Square with HH] EXISTING ELECTRICAL HANDHOLE
 - [Circle with O] EXISTING STAKE MOUNTED TAXIWAY LIGHT
 - [Square with X] EXISTING BASE MOUNTED TAXIWAY LIGHT
 - [Square with P] EXISTING WIND CONE
 - [Circle with T] EXISTING WIND TEE



JAN 18, 2006 10:49 PM RAW I:\AIRPORTS\KEWANEE\810-06TXYD\AIRPORT\SHEETS\R-14ELE.DWG - STA. 4+00 TO STA. 12+00

DATE	REVISION	BY	KEWANEE MUNICIPAL AIRPORT KEWANEE, HENRY COUNTY, ILLINOIS A.I.P. PROJ.: 3-17-0058-B10 I.L. PROJ.: E21-3533
HD Project No. 810-06TXYD.0800 File Name R-14ELE.DWG Scale 1"=30' Date 08/02/05			 Hanson Professional Services Inc. 3125 Dancy Trail, Suite 100 Indianapolis, Indiana 46214 Offices Nationwide
LAYOUT	R.A.W.	08/02/05	
DRAWN	B.A.K.	08/02/05	
REVIEWED	C.A.H.	xx/xx/xx	OVERLAY TXY & APRON CONSTRUCT VAULT EXISTING ELECTRICAL PLAN STA. 4+00 TO STA. 12+00
21			21 of 67 sheets