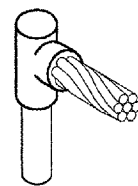
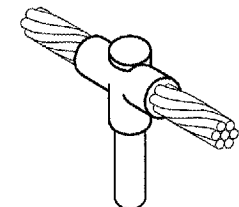


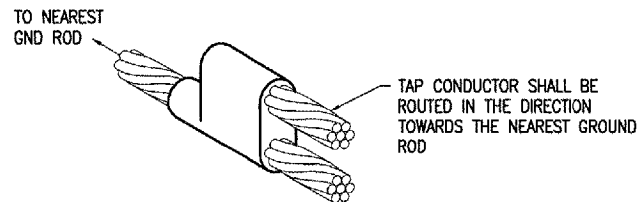
CABLE TO GROUND ROD



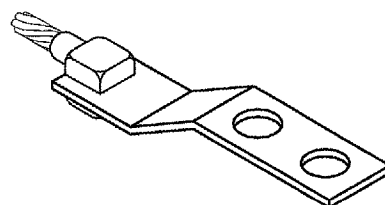
CABLE TO GROUND ROD



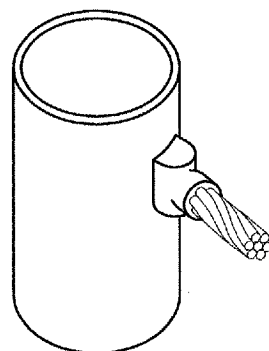
CABLE TO GROUND ROD



CABLE TO CABLE HORIZONTAL PARALLEL TAP



CABLE TO LUG

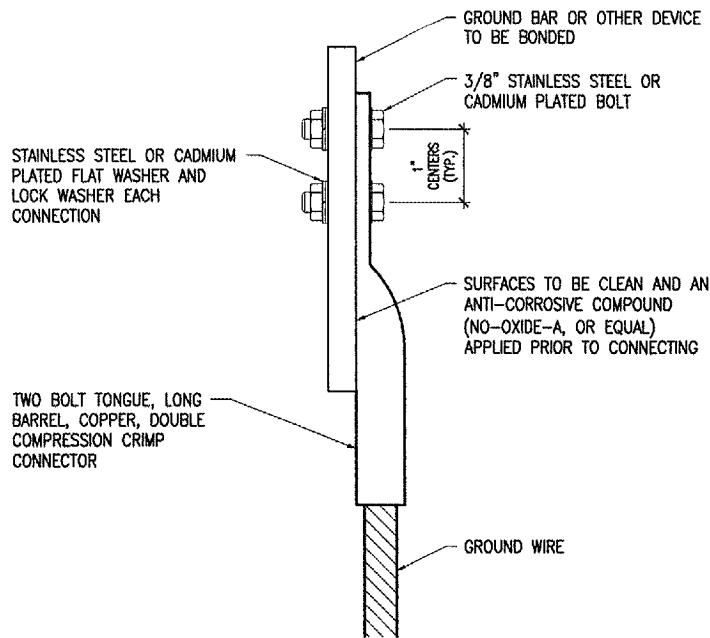


CABLE TO PIPE OR STEEL LIGHT POLE

DETAIL NOTES

1. EXOTHERMIC WELDS SHALL BE CADWELD AS MANUFACTURED BY ERICO PRODUCTS, SOLON, OHIO, ULTRAWELD AS MANUFACTURED BY HARGER LIGHTNING PROTECTION & GROUNDING EQUIPMENT, GRAYSLAKE, IL, OR THERMOWELD AS MANUFACTURED BY CONTINENTAL INDUSTRIES, TULSA, OKLAHOMA. VERIFY PROPER SIZES, MOLDS, TYPES, AND REQUIREMENTS FOR THE RESPECTIVE APPLICATION WITH THE MANUFACTURER, AND INSTALL PER THEIR DIRECTIONS.
2. FOR APPLICATIONS TO GALVANIZED STEEL OR PAINTED STEEL, REMOVE GALVANIZING AND/OR PAINT & CLEAN THE SURFACE TO EXPOSE BARE STEEL BEFORE MAKING EXOTHERMIC WELD CONNECTION.
3. INDIVIDUAL GROUNDING ELECTRODE CONDUCTORS SHALL NOT BE INSTALLED IN METAL CONDUIT. INSTALL GROUNDING ELECTRODE CONDUCTORS IN SCHED 40 PVC CONDUIT AS REQUIRED IN FOUNDATIONS, FOR PROTECTION, WHERE ENTERING ENCLOSURES, ETC.

EXOTHERMIC WELD DETAILS

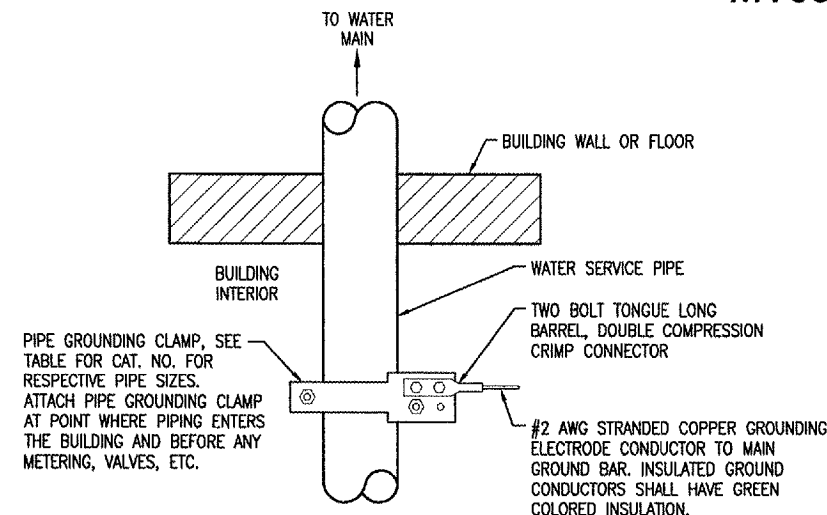


2 HOLE LONG BARREL COMPRESSION LUG TABLE		
WIRE SIZE	BURNDY CAT. NO.	THOMAS & BETTS CAT. NO.
#6 AWG STRANDED	YA6C-2TC38	256-30695-1158
#2 AWG STRANDED	YA2C-2TC38	256-30695-1160
#1/0 AWG STRANDED	YA25-2TC38	256-30695-1162
#2/0 AWG STRANDED	YA26-2TC38	256-30695-1116
#3/0 AWG STRANDED	YA27-2TC38	54816BE

NOTES

1. ALL CONNECTIONS TO GROUND BUS BAR SHALL BE WITH 2 HOLE TONGUE LONG BARREL COMPRESSION LUGS BOLTED TO THE BUS BAR.
2. GROUND WIRE CONNECTIONS TO EQUIPMENT SHALL BE WITH 2 HOLE TONGUE LONG BARREL COMPRESSION LUGS BOLTED TO THE DEVICE OR WITH THE RESPECTIVE EQUIPMENT MANUFACTURER'S LUG OR TERMINAL WHERE APPLICABLE.
3. GROUNDING ELECTRODE CONDUCTORS, BONDING JUMPERS, & INDIVIDUAL GROUND WIRES SHALL NOT BE INSTALLED IN METAL CONDUIT.
4. ALL CONNECTIONS SHALL BE COATED WITH A CORROSION PREVENTATIVE COMPOUND (SANCHEM INC. NO-OX-ID "A-SPECIAL" OR APPROVED EQUAL) BEFORE JOINING. ALL COPPER BUS BARS SHALL BE CLEANED PRIOR TO MAKING CONNECTIONS TO REMOVE SURFACE OXIDATION. CLEAN SURFACES, OF RESPECTIVE DEVICES TO BE BONDED, TO BARE METAL, PER NEC 250-12.

GROUNDING LUG CONNECTION DETAIL



PIPE GROUNDING CLAMP TABLE	
BURNDY CAT. NO.	PIPE SIZE
GAR3902TC	1/2" - 1"
GAR3903TC	1 1/4" - 2"
GAR3904TC	2 1/2" - 3 1/2"
GAR3905TC	4" - 5"
GAR3906TC	6"
GAR3907TC	8"
GAR3908TC	10"
GAR3909TC	12"

NOTES

1. PROVIDE PIPE GROUNDING CLAMPS AT BOTH SIDES OF WATER METER WITH #2 AWG COPPER BONDING JUMPER ACROSS THE METER.
2. FOR DAMP OR WET LOCATIONS USE PIPE CLAMPS WITH ALL BRONZE HARDWARE.

WATER SERVICE PIPE GROUNDING DETAIL

WORK & DETAILS SHOWN ON THIS SHEET IS FOR BID ALTERNATE NO. 1 & BID ALTERNATE NO. 2

JAN 19, 2008 8:53 PM RAW I:\AIRPORTS\MVERNON\819-06RWYD\AIRPORT\SHEETS\E-501.DWG - Work-FLR

DATE	REVISION	BY

MT. VERNON AIRPORT

 MT. VERNON, ILLINOIS
 I.L. PROJ.: MW-3539 A.I.P. PROJ.: 3-17-0074-B12

HEL Project No. 819-06RWYD	11/30/05
Filename E-501.DWG	11/30/05
Scale NONE	12/16/05
Date 12/16/05	
LAYOUT KNL	CAH
DRAWN MY	
REVIEWED CAH	

HANSON
 Hanson Professional Services Inc.
 1925 South Sixth Street
 Springfield, Illinois 62703-2886
 Offices Nationwide

RUNWAY 15-33
 P.F.C. OVERLAY
 GROUNDING DETAILS