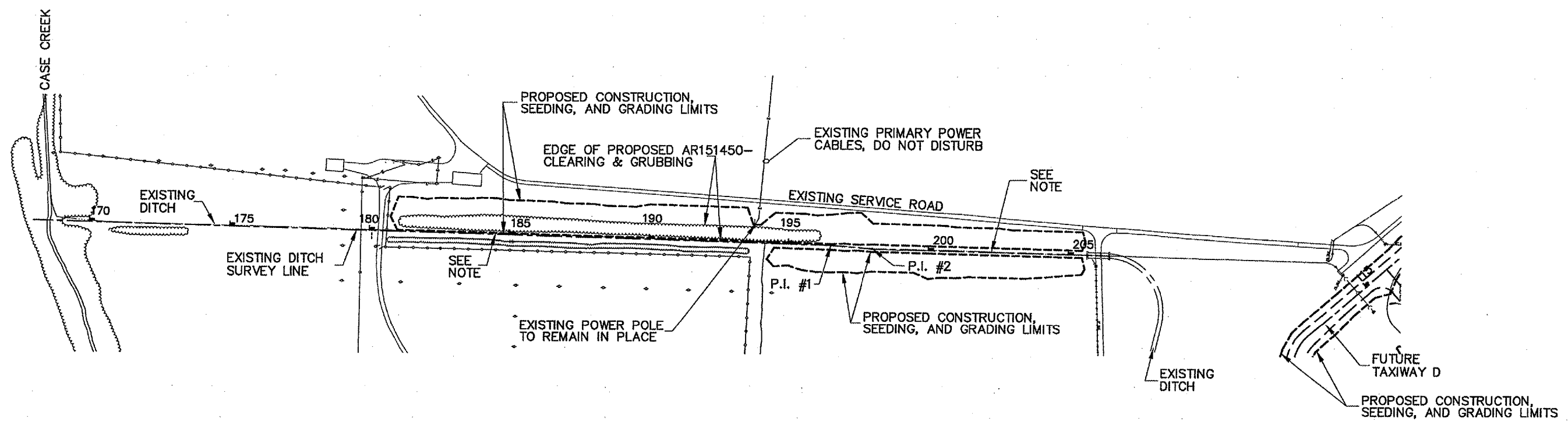
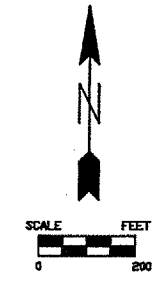


QUAD CITY INTERNATIONAL AIRPORT
 RUNWAY 5 EXTENSION - EARTHWORK
 ILL. MLI-3496, QU095
 SHEET 12 OF 49

SURVEY LINE DATA
 P.I.#1 = STA. 196+50
 I = 2D 52' 6.88"
 P.I.#2 = STA. 198+00
 I = 3D 7' 47.04"



NOTE:
 DO NOT DISTURB THE BOTTOM AREA
 OF THE EXISTING DRAINAGE DITCH.

- LEGEND:**
- EDGE LIGHT
 - GUIDANCE SIGN
 - ELECTRICAL CABLE
 - STORM SEWER OR UNDERDRAIN
 - INLET
 - OUTLET
 - STORM MANHOLE
 - SANITARY MANHOLE
 - DRAINAGE DITCH
 - CONDUIT OR DUCT BANK
 - FENCE LINE
 - POWER POLE
 - PROPOSED CONSTRUCTION, SEEDING, AND GRADING LIMITS