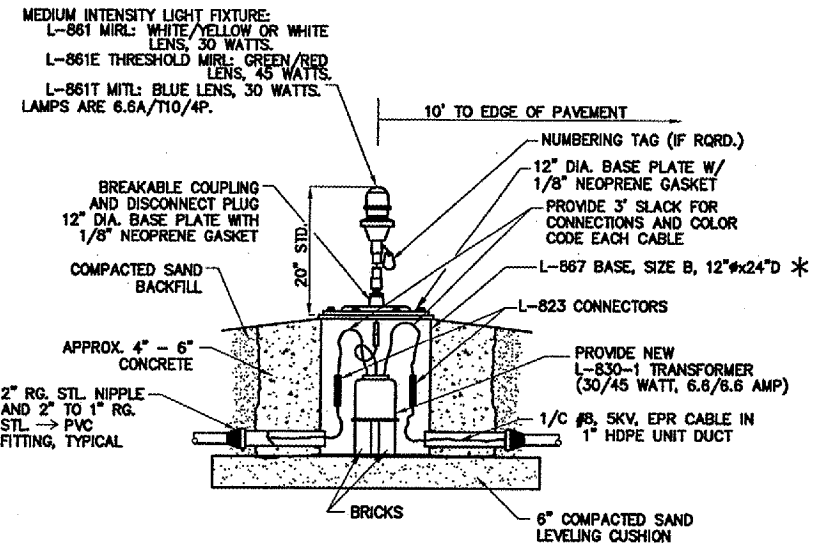
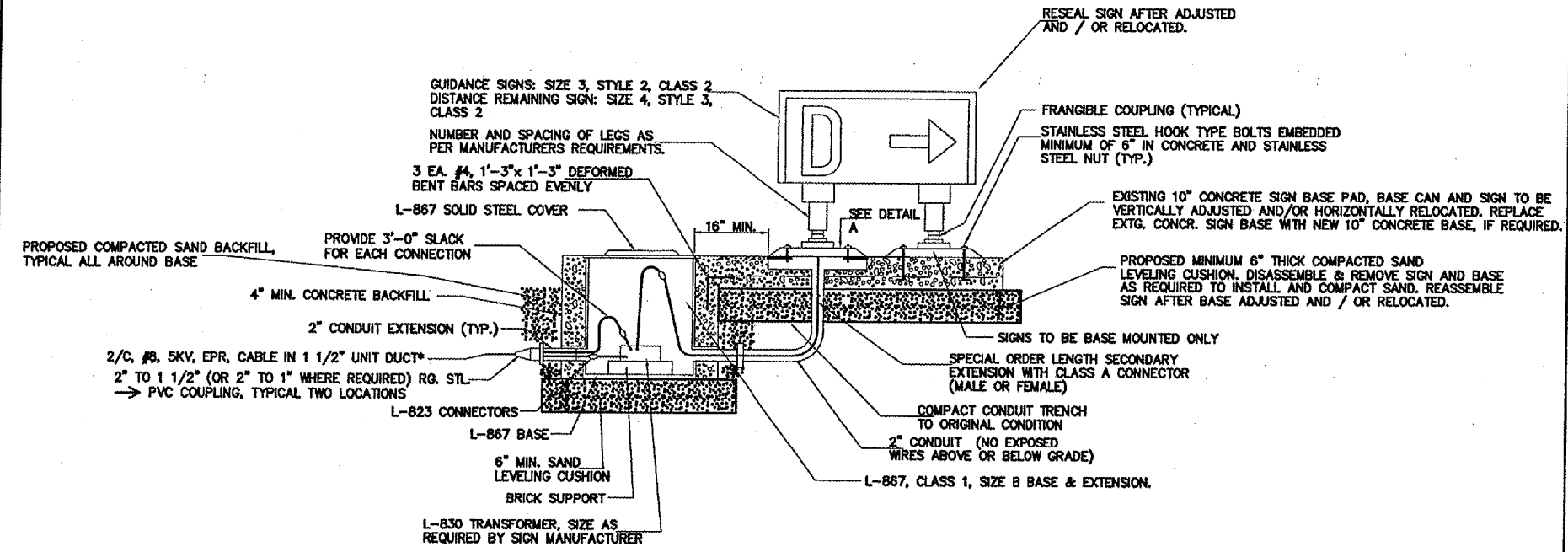


ADJUSTMENT / RELOCATION OF EXISTING GUIDANCE SIGNS



L-861 EDGE LIGHT INSTALLATION / RELOCATION DETAILS
 MEDIUM INTENSITY RUNWAY LIGHT (MIRL)
 MEDIUM INTENSITY TAXIWAY LIGHT (MITL)
 BASE MOUNTED, 6.6 AMP SERIES CIRCUIT
 NOT TO SCALE

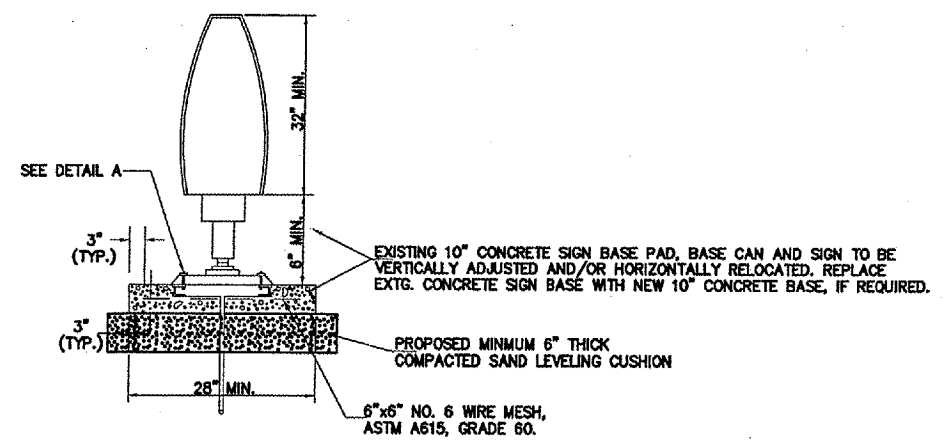
- NOTES :**
- BREAKING GROOVE OF BREAKABLE COUPLING SHALL BE 3" TO 3 1/2" ABOVE FINISHED GRADE.
 - * ORDER L-867 BASE WITH ADDITIONAL 2" CONDUIT HUB APPROXIMATELY 90° FROM MAIN ENTRANCE HUB WHERE INDICATED ON PLAN SHEETS.
 - IF THE CONDITION OF THE EXISTING LIGHTING EQUIPMENT TO BE REMOVED IS ACCEPTABLE TO THE RESIDENT ENGINEER, THE CONTRACTOR MAY REUSE THE REMOVED LIGHT FIXTURES, BASE PLATES, CANS, AND TRANSFORMERS AT THE PROPOSED LIGHT LOCATIONS. IF THE EXISTING EDGE LIGHT EQUIPMENT IS REUSED, THEN THE CONTRACTOR SHALL SUPPLY AND INSTALL 6" COMPACTED SAND LEVELING CUSHION, EXTEND THE EXISTING STEEL CONDUIT TO A POINT OUTSIDE OF THE PROPOSED CONCRETE BACKFILL, ADDITIONAL P.C. CONCRETE BACKFILL ALL AROUND (MIN. 4" THICKNESS), COMPACTED SAND BACKFILL, NEW 1/8" NEOPRENE GASKETS, RETAP BASE HOLES AS REQ'D., NEW STAINLESS STEEL BOLTS, NUTS, & WASHERS, AND NEW LENS & LAMPS AS REQUIRED. CONTRACTOR SHALL REPLACE ANY DAMAGED EQUIPMENT AS DIRECTED BY THE RESIDENT ENGINEER. CONTRACTOR SHALL SUPPLY AND INSTALL NEW EDGE LIGHT EQUIPMENT AS REQUIRED.



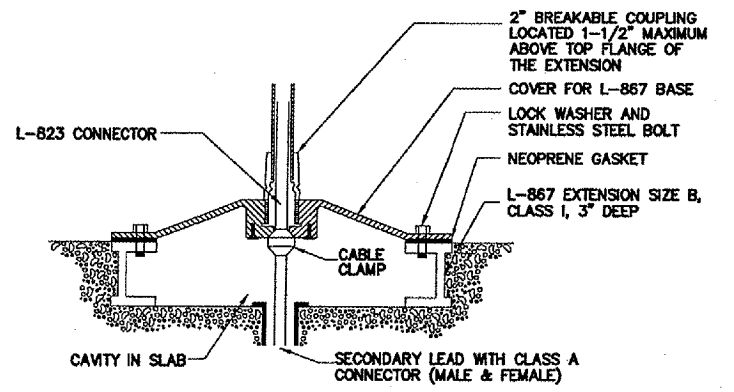
* - FOR SIGN ELEVATION ADJUSTMENTS, RAISE EXISTING UNIT DUCT AS REQUIRED TO ADJUST ELEVATION OF TRANSFORMER CAN.

FRONT VIEW

- NOTES:**
- COLOR CODE TAPE FOR WIRE IDENTIFICATION 6" BEFORE L-823 CONNECTORS.
 - CONTRACTOR MAY REUSE EXISTING MATERIALS AND EQUIPMENT. CONTRACTOR SHALL SUPPLY AND INSTALL NEW EQUIPMENT AND MATERIALS AS REQUIRED TO COMPLETE SIGN ADJUSTMENT / RELOCATION.
 - DRAINAGE TO FLOW AWAY FROM SIGN. NO WATER PONDING AROUND SIGN BASE PERMITTED.



SIDE VIEW



DETAIL A