

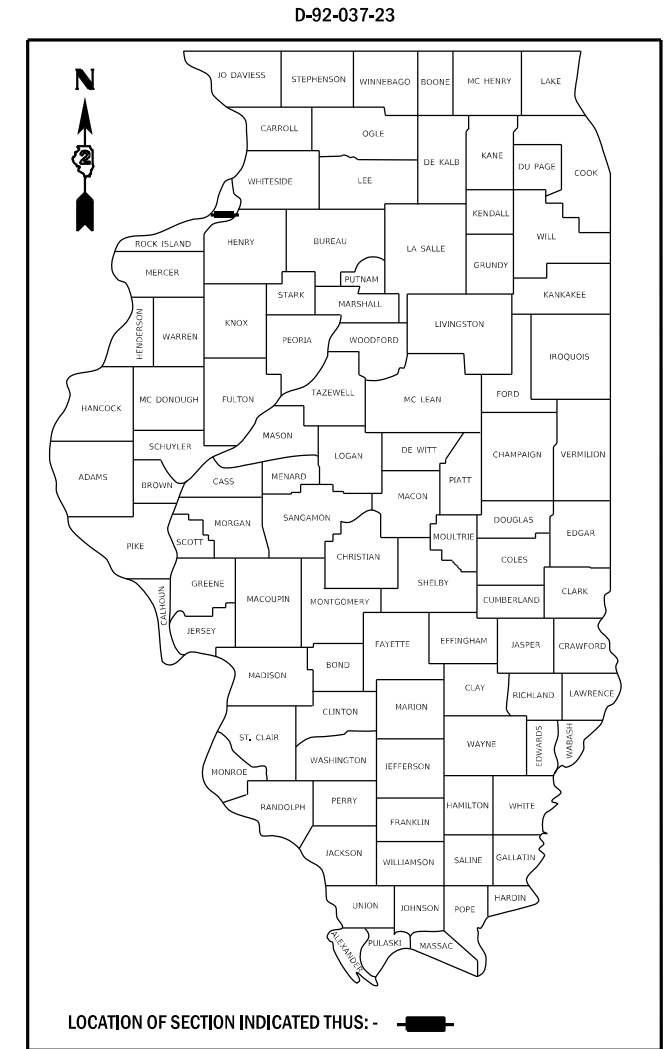
F.A.I. RTE.	SECTION	COUNTY	TOTAL SHEETS	SHEET NO.
88	(161-1HB-4)BJR	ROCK ISLAND	25	1
C-92-031-23		ILLINOIS	CONTRACT NO. 64S24	

INDEX OF SHEETS

- 01 COVER SHEET
- 02 GENERAL NOTES & STANDARDS
- 03-04 SUMMARY OF QUANTITIES
- 05-06 SCHEDULE OF QUANTITIES
- 07 MEDIAN REPLACEMENT PLAN & TYPICAL SECTION
- 08-11 TRAFFIC CONTROL PLAN STAGE I & STAGE II
- 12 GENERAL PLAN AND ELEVATION
- 13-14 STAGING DETAILS
- 15-17 JOINT REPLACEMENT DETAILS
- 18 MODIFIED PREFORMED JOINT STRIP SEAL
- 19 PARAPET REPAIR DETAILS
- 20 EAST ABUTMENT REPAIR DETAILS
- 21 WEST ABUTMENT REPAIR DETAILS
- 22 PIER REPAIR DETAILS
- 23-25 DETAIL SHEETS

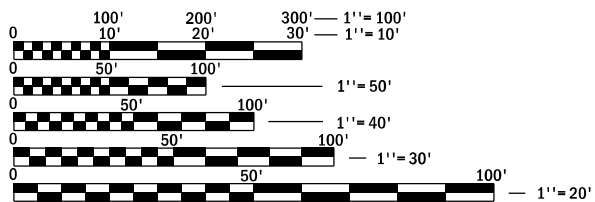
STATE OF ILLINOIS
DEPARTMENT OF TRANSPORTATION
DIVISION OF HIGHWAYS
**PROPOSED
HIGHWAY PLANS**

FAI ROUTE 88 (I-88)
SECTION (161-1HB-4)BJR
BRIDGE REPAIR
ROCK ISLAND COUNTY
C-92-031-23



DESIGN DESIGNATIONS

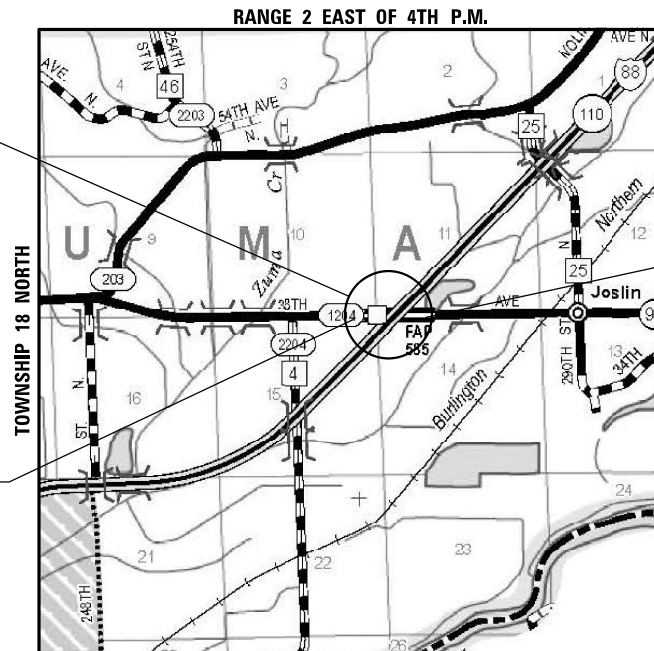
MINOR ARTERIAL
CURRENT ADT: 3050 (2021)
DESIGN SPEED: 55 MPH
POSTED SPEED: 55 MPH



FULL SIZE PLANS HAVE BEEN PREPARED USING STANDARD ENGINEERING SCALES. REDUCED SIZED PLANS WILL NOT CONFORM TO STANDARD SCALES. IN MAKING MEASUREMENTS ON REDUCED PLANS, THE ABOVE SCALES MAY BE USED.

J.U.L.I.E.
JOINT UTILITY LOCATION INFORMATION FOR EXCAVATION
1-800-892-0123
OR 811

EXISTING STRUCTURE
SN 081-0125: ORIGINALLY BUILT IN 1975 AND REHABILITATED IN 2001 AS A TWO SPAN (140'-3", 140'-3") STEEL PLATE GIRDER BRIDGE WITH VAULTED ABUTMENTS AND MULTI-COLUMN PIER. THE TOTAL LENGTH BACK TO BACK PF APPROACH BENTS IS 356'-6". THE DECK WIDTH IS 68'-0" OUT TO OUT.

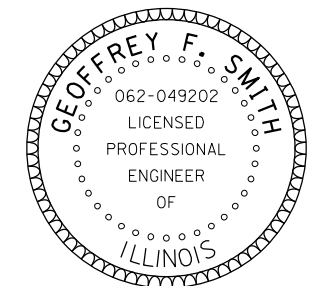


**PROJECT BEGINS
STA. 489 + 03.38**

**PROJECT ENDS
STA. 501 + 96.61**

MAP NOT TO SCALE
LOCATION MAP

GROSS LENGTH = 3825 FT. = 0.724 MILE
NET LENGTH = 393.2 FT. = 0.074 MILE



DATE: _____
EXPIRES 11/30/23

PROJECT ENGINEER GEOFF SMITH, P.E.
PROJECT MANAGER MAHMOUD ETEMADI, P.E.

CONTRACT NO. 64S24

STATE OF ILLINOIS
DEPARTMENT OF TRANSPORTATION

SUBMITTED December 07, 2022
Thomas Harold
REGIONAL ENGINEER

February 3, 2023
Scott A. Etk
ENGINEER OF DESIGN AND ENVIRONMENT

February 3, 2023
Stephen M. Smith
DIRECTOR OF HIGHWAYS PROJECT IMPLEMENTATION

**PRINTED BY THE AUTHORITY
OF THE STATE OF ILLINOIS**

HIGHWAY STANDARDS

000001-08	STANDARD SYMBOLS, ABBREVIATIONS, AND PATTERNS
001001-02	AREAS OF REINFORCEMENT BARS
001006	DECIMAL OF AN INCH AND OF A FOOT
420001-10	PAVEMENT JOINTS
606001-08	CONCRETE CURB TYPE B AND COMBINATION CONCRETE CURB AND GUTTER
606301-04	PC CONCRETE ISLANDS AND MEDIANS
701006-05	OFF-RD OPERATIONS, 2L, 2W, A5' TO 24" FROM PAVEMENT EDGE
701011-04	OFF-RD OPERATIONS, 2L, 2W, DAY ONLY
701201-05	LANE CLOSURE, 2L, 2W, DAY ONLY FOR SPEEDS ≥ 45 MPH
701301-04	LANE CLOSURE, 2L, 2W, SHORT TIME OPERATIONS
701306-04	LANE CLOSURE 2L, 2W, SLOW MOVING OPERATIONS DAY ONLY, FOR SPEEDS ≥ 45 MPH
701311-03	LANE CLOSURE 2L, 2W MOVING OPERATIONS, DAY ONLY
701331-05	LANE CLOSURE, 2L, 2W, WITH RUN-AROUND, FOR SPEEDS = 45 MPH
701901-08	TRAFFIC CONTROL DEVICES
720001-01	SIGN PANEL MOUNTING DETAILS
720006-04	SIGN PANEL ERECTION DETAILS
720011-01	METAL POSTS FOR SIGNS, MARKERS & DELINEATORS
728001-01	TELESCOPING STEEL SIGN SUPPORT
729001-01	APPLICATIONS OF TYPES A & B METAL POSTS (FOR SIGNS & MARKERS)
782006-01	GUARDRAIL AND BARRIER WALL REFLECTOR MOUNTING DETAILS

DISTRICT 2 STANDARDS

41.1 TYPICAL PAVEMENT MARKINGS

GENERAL NOTES

ALL BORROW/WASTE/USE SITES MUST BE APPROVED BY THE DEPARTMENT PRIOR TO REMOVING ANY MATERIAL FROM THE PROJECT OR INITIATING ANY EARTH MOVING ACTIVITIES, INCLUDING TEMPORARY STOCKPILING OUTSIDE THE LIMITS OF CONSTRUCTION.

THE AREA TO BE TACKED OR PRIMED SHALL BE LIMITED TO THAT WHICH CAN BE COVERED WITH HMA ON THE NEXT DAY'S PRODUCTION, BUT NO MORE THAN FIVE DAYS IN ADVANCE OF THE PLACEMENT OF THE HMA, UNLESS APPROVED BY THE ENGINEER.

THE STRUCTURE WILL RETAIN THE SAME NUMBER: 081-0125.

THE CONTRACTOR SHALL BE RESPONSIBLE FOR LOCATING AND PROTECTING UTILITY PROPERTY DURING CONSTRUCTION OPERATIONS AS OUTLINED IN ARTICLE 107.39 OF THE STANDARD SPECIFICATIONS. A MINIMUM OF 48 HOURS ADVANCED NOTICE IS REQUIRED FOR NON-EMERGENCY WORK. THE JULIE NUMBER IS 800-892-0123. THE FOLLOWING LISTED UTILITIES LOCATED WITHIN THE PROJECT LIMITS OR IMMEDIATELY ADJACENT TO THE PROJECT CONSTRUCTION LIMITS ARE MEMBER OF JULIE.

IDOT IS NOT A MEMBER OF JULIE. IF YOU ARE NEAR ANY OVERHEAD LIGHTING, INTERSECTION LIGHTING OR TRAFFIC SIGNALS, CONTACT THE IDOT TRAFFIC OFFICE AND 815-284-5469 AT LEAST 48 HOURS PRIOR TO WORK.

PAVEMENT MARKING SHALL BE DONE ACCORDING TO STANDARD 780001, EXCEPT AS FOLLOWS:

1. ALL WORDS, SUCH AS ONLY, SHALL BE 8 FEET HIGH.
2. ALL NON-FREEWAY ARROWS SHALL BE THE LARGE SIZE.
3. THE DISTANCE BETWEEN YELLOW NO-PASSING LINES SHALL BE 8 INCHES, NOT 7 INCHES, AS SHOWN IN THE DETAIL OF TYPICAL LANE AND EDGE LINES.
4. CENTERLINE SKIP DASH PAVEMENT MARKING ON MULTI-LANE DIVIDED, MULTI-LANE UNDIVIDED, AND ONE-WAY ROADWAY SHALL BE ACCORDING TO DISTRICT STANDARD 41.1.

HMA MIX DESIGN

LOCATION(S):	ROADWAY PAVEMENT
MIXTURE USE(S):	SURFACE
PG:	PG 58-28
DESIGN AIR VOIDS:	4.0 @ N70
MIXTURE COMPOSITION:	IL 9.5
FRICTION AGGREGATE:	C
MIXTURE WEIGHT:	112 LBS / SY / IN
QUALITY MANAGEMENT PROGRAM:	QC / QA
SUBLOT SIZE:	N / A
MATERIAL TRANSFER DEVICE:	N / A

FILE = S:\PROJECTS\2022\1054D22.IDOT\2022\DESIGN\CAD SHEETS\NO 4\SN 081-0125\1054D22.WD 4_General Notes & Standards.dgn



USER NAME = greg	DESIGNED - GBG	REVISED -
	DRAWN - GBG	REVISED -
PLOT SCALE = 2.0000' / 1" =	CHECKED - GFS	REVISED -
PLOT DATE = 12/1/2022	DATE - 12/1/2022	REVISED -

**STATE OF ILLINOIS
DEPARTMENT OF TRANSPORTATION**

**GENERAL NOTES & STANDARDS
STRUCTURE NO. 081-0125**

SHEET 1 OF 1 SHEETS

F.A.I. RTE.	SECTION	COUNTY	TOTAL SHEETS	SHEET NO.
88	(161-1HB-4)BJR	ROCK ISLAND	25	2
WHA# 1054D22		CONTRACT NO. 64S24		
C-92-031-23		ILLINOIS		

SUMMARY OF QUANTITIES

CONSTRUCTION CODE: 0047 100% STATE

PAY CODE	PAY ITEM	UNIT	QUANTITY
	NAME		
35101400	AGGREGATE BASE COURSE, TYPE B	TON	66
40600290	BITUMINOUS MATERIALS (TACK COAT)	POUND	48
40604052	HOT-MIX ASPHALT SURFACE COURSE, IL-9.5, MIX "C", N70	TON	14
44000157	HOT-MIX ASPHALT SURFACE REMOVAL, 2"	SQ YD	100
44000300	CURB REMOVAL	FOOT	76
44003100	MEDIAN REMOVAL	SQ FT	624
50102400	CONCRETE REMOVAL	CU YD	29.1
50300255	CONCRETE SUPERSTRUCTURE	CU YD	28.2
50300300	PROTECTIVE COAT	SQ YD	228
50800205	REINFORCEMENT BARS, EPOXY COATED	POUND	4,030
52000110	PREFORMED JOINT STRIP SEAL	FOOT	187
60603800	COMBINATION CONCRETE CURB AND GUTTER, TYPE B-6.12	FOOT	76
60618300	CONCRETE MEDIAN SURFACE, 4 INCH	SQ FT	624
67100100	MOBILIZATION	L SUM	1

PAY CODE	PAY ITEM	UNIT	QUANTITY
	NAME		
70300221	TEMPORARY PAVEMENT MARKING - LINE 4"- PAINT	FOOT	28,606
* 78009000	MODIFIED URETHANE PAVEMENT MARKING - LETTERS AND SYMBOLS	SQ FT	62.4
* 78009004	MODIFIED URETHANE PAVEMENT MARKING - LINE 4"	FOOT	11,041
* 78009006	MODIFIED URETHANE PAVEMENT MARKING - LINE 6"	FOOT	386
* 78009008	MODIFIED URETHANE PAVEMENT MARKING - LINE 8"	FOOT	438
* 78009012	MODIFIED URETHANE PAVEMENT MARKING - LINE 12"	FOOT	350
* 78200005	GUARDRAIL REFLECTORS, TYPE A	EACH	22
78300202	PAVEMENT MARKING REMOVAL - WATER BLASTING	SQ FT	14,101
Z0012754	STRUCTURAL REPAIR OF CONCRETE (DEPTH EQUAL TO OR LESS THAN 5 INCHES)	SQ FT	150
Z0012755	STRUCTURAL REPAIR OF CONCRETE (DEPTH GREATER THAN 5 INCHES)	SQ FT	20
Z0016200	DECK SLAB REPAIR (PARTIAL)	SQ YD	100
Z0021904	SILICONE JOINT SEALER, 1"	FOOT	189
Z0041895	POLYMER CONCRETE	CU FT	18
Z0053750	RETROFIT CONCRETE PARAPET	FOOT	699

* = SPECIALTY ITEM

FILE = S:\PROJECTS\2022\1054D22\1054D22.D01\2022\DESIGN\CAD_SHEETS\WD 4\SN 081-0125\1054D22_Summary of Quantities.dgn



USER NAME = greg	DESIGNED - GBG	REVISED -
PLOT SCALE = 20.0000' / 1"	DRAWN - GBG	REVISED -
PLOT DATE = 12/1/2022	CHECKED - GFS	REVISED -
	DATE - 12/1/2022	REVISED -

**STATE OF ILLINOIS
DEPARTMENT OF TRANSPORTATION**

**SUMMARY OF QUANTITIES
STRUCTURE NO. 081-0125**

SHEET 1 OF 2 SHEETS

F.A.I. RTE.	SECTION	COUNTY	TOTAL SHEETS	SHEET NO.
88	(161-1HB-4)BJR	ROCK ISLAND	25	3
WHA# 1054D22		CONTRACT NO. 64S24		
C-92-031-23		ILLINOIS		

SCHEDULE OF QUANTITIES

35101400		
AGGREGATE BASE COURSE, TYPE B		
STATION	TON	REMARKS
IL RTE 92		
LT 498+03 - 498+31	2	DEPTH 4" - CURB
RT 498+03 - 498+13	1	DEPTH 4" - CURB
LT 501+87 - 501+97	1	DEPTH 4" - CURB
RT 501+69 - 501+97	2	DEPTH 4" - CURB
498+03 - 498+22	30	DEPTH 15" - MEDIAN
501+78 - 501+97	30	DEPTH 15" - MEDIAN
		2.05 TON / CU YD
PROJECT TOTAL	66	

40600290		
BITUMINOUS MATERIALS (TACK COAT)		
STATION	POUND	REMARKS
IL RTE 92		
RT 497+91 - 498+18	6	MILLED HMA
LT 498+03 - 498+44	18	MILLED HMA
RT 501+56 - 501+96	18	MILLED HMA
LT 501+88 - 502+09	6	MILLED HMA
		0.05 LBS / SQ FT
PROJECT TOTAL	48	

40604052		
HOT-MIX ASPHALT SURFACE COURSE, IL-9.5, MIX "C", N70		
STATION	TON	REMARKS
IL RTE 92		
RT 497+91 - 498+18	2	DEPTH 2"
LT 498+03 - 498+44	5	DEPTH 2"
RT 501+56 - 501+96	5	DEPTH 2"
LT 501+88 - 502+09	2	DEPTH 2"
		112 LBS / SQ YD / INCH
PROJECT TOTAL	14	

44000157		
HOT-MIX ASPHALT SURFACE REMOVAL, 2"		
STATION	SQ YD	REMARKS
IL RTE 92		
RT 497+91 - 498+18	12	
LT 498+03 - 498+44	38	
RT 501+56 - 501+96	38	
LT 501+88 - 502+09	12	
PROJECT TOTAL	100	

44000300		
CURB REMOVAL		
STATION	SQ YD	REMARKS
IL RTE 92		
LT 498+03 - 498+31	28	
RT 498+03 - 498+13	10	
LT 501+87 - 501+97	10	
RT 501+69 - 501+97	28	
PROJECT TOTAL	76	

44003100		
MEDIAN REMOVAL		
STATION	SQ FT	REMARKS
IL RTE 92		
498+03 - 498+22	312	
501+78 - 501+97	312	
PROJECT TOTAL	624	

60603800		
COMBINATION CONCRETE CURB AND GUTTER, TYPE B-6.12		
STATION	FOOT	REMARKS
IL RTE 92		
LT 498+03 - 498+31	28	
RT 498+03 - 498+13	10	
LT 501+87 - 501+97	10	
RT 501+69 - 501+97	28	
PROJECT TOTAL	76	

60618300		
CONCRETE MEDIAN SURFACE, 4 INCH		
STATION	SQ FT	REMARKS
IL RTE 92		
498+03 - 498+22	312	
501+78 - 501+97	312	
PROJECT TOTAL	624	

70300221		
TEMPORARY PAVEMENT MARKING - LINE 4" - PAINT		
STATION	FOOT	REMARKS
IL RTE 92 STAGE I (N SIDE)		
LT 481+50 - 517+75	3,626	LT EDGE LINE (WHT)
RT 481+50 - 514+25	3,413	RT EDGE LINE (WHT)
481+50 - 517+75	7,252	DBL CENTERLINE (YEL)
SUBTOTAL:	14,291	
IL RTE 92 STAGE II (S. SIDE)		
LT 485+75 - 518+50	3,362	LT EDGE LINE (WHT)
RT 482+00 - 518+50	3,651	RT EDGE LINE (WHT)
482+00 - 518+50	7,302	DBL CENTERLINE (YEL)
SUBTOTAL:	14,315	
PROJECT TOTAL	28,606	

78009000		
MODIFIED URETHANE PAVEMENT MARKING-LETTERS AND SYMBOLS		
STATION	SQ FT	REMARKS
IL RTE 92		
LT 493+67	15.6	LEFT TURN ARROW (WHT)
LT 495+41	15.6	LEFT TURN ARROW (WHT)
RT 504+52	15.6	LEFT TURN ARROW (WHT)
RT 506+25	15.6	LEFT TURN ARROW (WHT)
PROJECT TOTAL	62.4	

78009004		
MODIFIED URETHANE PAVEMENT MARKING - LINE 4"		
STATION	FOOT	REMARKS
IL RTE 92		
LT 481+50 - 484+30	281	EDGE LINE (WHT)
RT 481+50 - 491+33	984	EDGE LINE (WHT)
481+50 - 485+20	740	DBL CENTERLINE (YEL)
LT 485+20 - 492+00	680	EDGE LINE @ MEDIAN (YEL)
RT 485+20 - 492+33	713	EDGE LINE @ MEDIAN (YEL)
LT 485+95 - 491+52	559	EDGE LINE (WHT)
RT 492+67 - 507+24	1,464	EDGE LINE (WHT)
LT 492+79 - 507+35	1,463	EDGE LINE (WHT)
LT 507+63 - 514+68	705	EDGE LINE @ MEDIAN (YEL)
RT 507+63 - 514+68	707	EDGE LINE @ MEDIAN (YEL)
RT 508+54 - 518+50	998	EDGE LINE (WHT)
LT 508+68 - 518+50	983	EDGE LINE (WHT)
514+68 - 518+50	764	DBL CENTERLINE (YEL)
PROJECT TOTAL	11,041	

78009006		
MODIFIED URETHANE PAVEMENT MARKING-LINE 6"		
STATION	FOOT	REMARKS
IL RTE 92		
RT 491+63 - 492+44	110	ISLAND OUTLINE (WHT)
LT 491+95 - 492+56	87	ISLAND OUTLINE (WHT)
RT 507+44 - 508+06	87	ISLAND OUTLINE (WHT)
LT 507+60 - 508+36	102	ISLAND OUTLINE (WHT)
PROJECT TOTAL	386	

78009008		
MODIFIED URETHANE PAVEMENT MARKING-LINE 8"		
STATION	FOOT	REMARKS
IL RTE 92		
LT 493+45 - 495+62	217	TURN LANE (WHT)
RT 504+32 - 506+53	221	TURN LANE (WHT)
PROJECT TOTAL	438	

78009012		
MODIFIED URETHANE PAVEMENT MARKING-LINE 12"		
STATION	FOOT	REMARKS
IL RTE 92		
RT 491+63 - 492+44	116	ISLAND DIAGONALS (WHT)
LT 491+95 - 492+56	66	ISLAND DIAGONALS (WHT)
RT 507+44 - 508+06	76	ISLAND DIAGONALS (WHT)
LT 507+60 - 508+36	92	ISLAND DIAGONALS (WHT)
PROJECT TOTAL	350	

78200005		
GUARDRAIL REFLECTORS, TYPE A		
STATION	EACH	REMARKS
IL RTE 92 STAGE I (N SIDE)		
LT 497+33 - 505+26	16	TEMPORARY (EXISTING GUARDRAIL & BRIDGE RAIL)
IL RTE 92 STAGE II (S SIDE)		
RT 494+68 - 497+88	6	TEMPORARY (EXISTING GUARDRAIL)
RT 501+44 - 502+58	2	TEMPORARY (EXISTING GUARDRAIL)
PROJECT TOTAL	22	

FILE = S:\PROJECTS\2022\1054D22.D01\2022\DESIGN\CAD_SHEETS\NO 4\SN 081-0125\1054D22-Schedule of Quantities W04.dgn



USER NAME = greg
 DESIGNED - GBG
 DRAWN - GBG
 PLOT SCALE = 20.0000 / 1
 PLOT DATE = 12/1/2022
 CHECKED - GFS
 DATE = 12/1/2022

REVISED -
 REVISED -
 REVISED -
 REVISED -

STATE OF ILLINOIS
DEPARTMENT OF TRANSPORTATION

SCHEDULE OF QUANTITIES
STRUCTURE NO. 081-0125

SHEET 1 OF 2 SHEETS

F.A.I. RTE.	SECTION	COUNTY	TOTAL SHEETS	SHEET NO.
88	(161-11B-1)BJR	ROCK ISLAND	25	5
WHA# 1054D22		CONTRACT NO. 64S24		
C-92-031-23	ILLINOIS			

SCHEDULE OF QUANTITIES

78300202		
PAVEMENT MARKING REMOVAL-WATER BLASTING		
STATION	SQ FT	REMARKS
IL RTE 92		
LT 493+67	15.6	LEFT TURN ARROW
LT 495+41	15.6	LEFT TURN ARROW
RT 504+52	15.6	LEFT TURN ARROW
RT 506+25	15.6	LEFT TURN ARROW
LT 481+50 - 484+30	94	4" LINE
RT 481+50 - 491+33	328	4" LINE
481+50 - 485+20	246	4" LINE
LT 485+20 - 492+00	226	4" LINE
RT 485+20 - 492+33	237	4" LINE
LT 485+95 - 491+52	186	4" LINE
RT 492+67 - 507+24	488	4" LINE
LT 492+79 - 507+35	487	4" LINE
LT 507+63 - 514+68	235	4" LINE
RT 507+63 - 514+68	235	4" LINE
RT 508+54 - 518+50	332	4" LINE
LT 508+68 - 518+50	327	4" LINE
514+68 - 518+50	254	4" LINE
RT 491+63 - 492+44	55	6" LINE
LT 491+95 - 492+56	44	6" LINE
RT 507+44 - 508+06	44	6" LINE
LT 507+60 - 508+36	51	6" LINE
LT 493+45 - 495+62	145	8" LINE
RT 504+32 - 506+53	147	8" LINE
RT 491+63 - 492+44	116	12" LINE
LT 491+95 - 492+56	66	12" LINE
RT 507+44 - 508+06	76	12" LINE
LT 507+60 - 508+36	92	12" LINE
SUBTOTAL:	4,573	
STAGE I (TEMPORARY PVMT MRK)		
LT 481+50 - 517+75	1,207	LT EDGE LINE (WHT)
RT 481+50 - 517+75	1,137	RT EDGE LINE (WHT)
481+50 - 517+75	2,415	DBL CENTERLINE (YEL)
SUBTOTAL:	4,760	
STAGE II (TEMPORARY PVMT MRK)		
LT 482+00 - 518+50	1,120	LT EDGE LINE (WHT)
RT 482+00 - 518+50	1,216	RT EDGE LINE (WHT)
482+00 - 518+50	2,432	DBL CENTERLINE (YEL)
SUBTOTAL:	4,768	
PROJECT TOTAL	14,101	

X0326649*		
LINEAR DELINEATOR PANELS, 6 INCH		
STATION	EACH	REMARKS
IL RTE 92		
RT 497+88 - 501+45	8	ALONG NEW CONCRETE BRIDGE WALL
LT 498+55 - 502+12	8	ALONG NEW CONCRETE BRIDGE WALL
PROJECT TOTAL	16	

FILE = S:\PROJECTS\2022\1054D22\DOT202\DESIGN\CAD_SHEETS\W04\SN 081-0125\1054D22.Schedule of Quantities W04.dgn



WILLETT HOFMANN & ASSOCIATES INC.
 ENGINEERING ARCHITECTURE LAND SURVEYING
 809 EAST 2ND STREET, DIXON, IL 61021-0367
 T: 815-284-3381 DESIGN FIRM: #184-000918

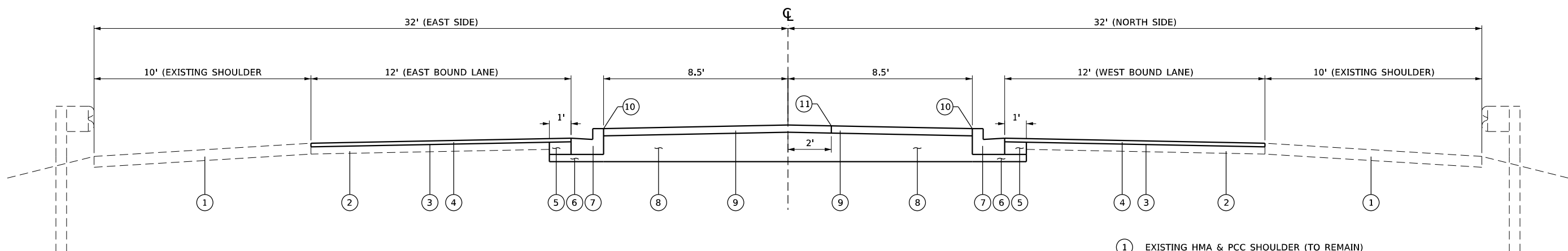
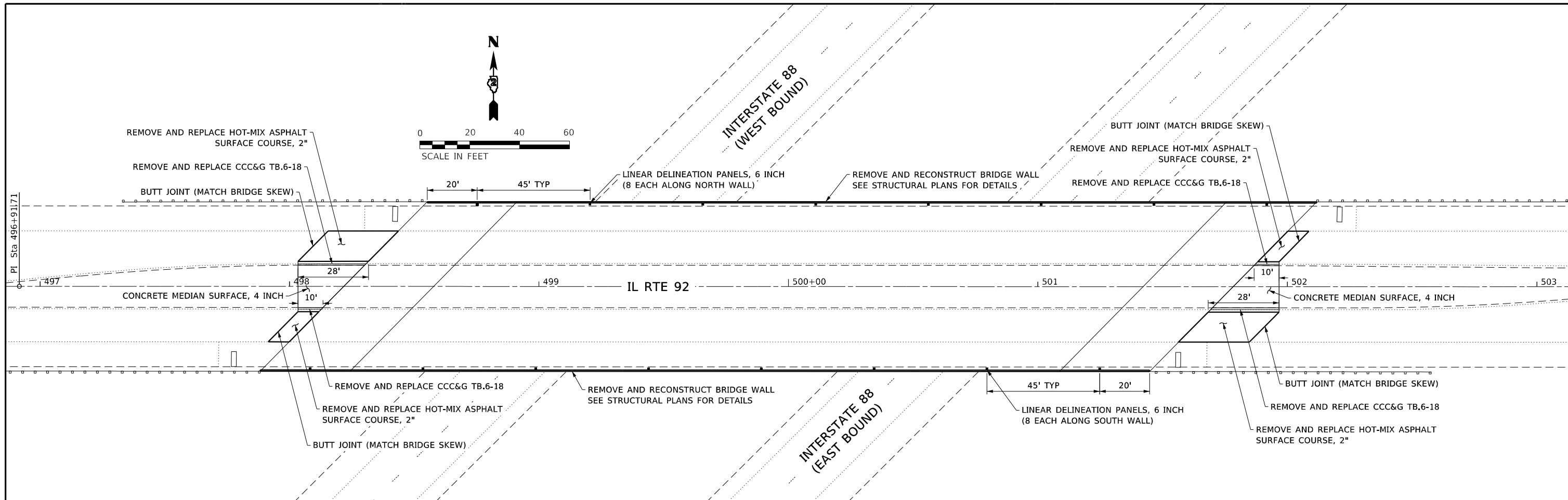
USER NAME = greg	DESIGNED - GBG	REVISED -
PLOT SCALE = 20.0000' / 1"	DRAWN - GBG	REVISED -
PLOT DATE = 12/1/2022	CHECKED - GFS	REVISED -
	DATE - 12/1/2022	REVISED -

STATE OF ILLINOIS
DEPARTMENT OF TRANSPORTATION

SCHEDULE OF QUANTITIES
STRUCTURE NO. 081-0125

SHEET 2 OF 2 SHEETS

F.A.I. RTE.	SECTION	COUNTY	TOTAL SHEETS	SHEET NO.
88	(161-1HB-4)BJR	ROCK ISLAND	25	6
WHA# 1054D22		CONTRACT NO. 64S24		
C-92-031-23		ILLINOIS		



TYPICAL SECTION THROUGH MEDIAN REPLACEMENT
STA 497+91 to STA 498+44
&
STA 501+56 to STA 502+09
 (NOT TO SCALE)

- ① EXISTING HMA & PCC SHOULDER (TO REMAIN)
- ② EXISTING HMA ROADWAY PAVEMENT (TO REMAIN)
- ③ HOT-MIX ASPHALT SURFACE REMOVAL, 2"
- ④ HOT-MIX ASPHALT SURFACE COURSE, IL-9.5, MIX "C", N70
- ⑤ CONTROLLED LOW STRENGTH MATERIAL
- ⑥ AGGREGATE BASE COURSE, TYPE B (DEPTH 4")
- ⑦ COMBINATION CONCRETE CURB & GUTTER TYPE B-6.12
- ⑧ AGGREGATE BASE COURSE, TYPE B (DEPTH 15")
- ⑨ CONCRETE MEDIAN SURFACE, 4 INCH
- ⑩ EXPANSION JOINT (NON-REINFORCED)
- ⑪ CONSTRUCTION JOINT (NON-REINFORCED) (LINE UP WITH STAGED BRIDGE CONSTRUCTION)

FILE = S:\PROJECTS\2022\1054D22\DESIGN\CAD\SHEETS\NO 4\SN 081-0125\1054D22.Plan Sheet.dgn



USER NAME = greg	DESIGNED - GBG	REVISED -
	DRAWN - DLB	REVISED -
PLOT SCALE = 40.0000' / 1"	CHECKED - GFS	REVISED -
PLOT DATE = 12/1/2022	DATE - 12/1/2022	REVISED -

STATE OF ILLINOIS
DEPARTMENT OF TRANSPORTATION

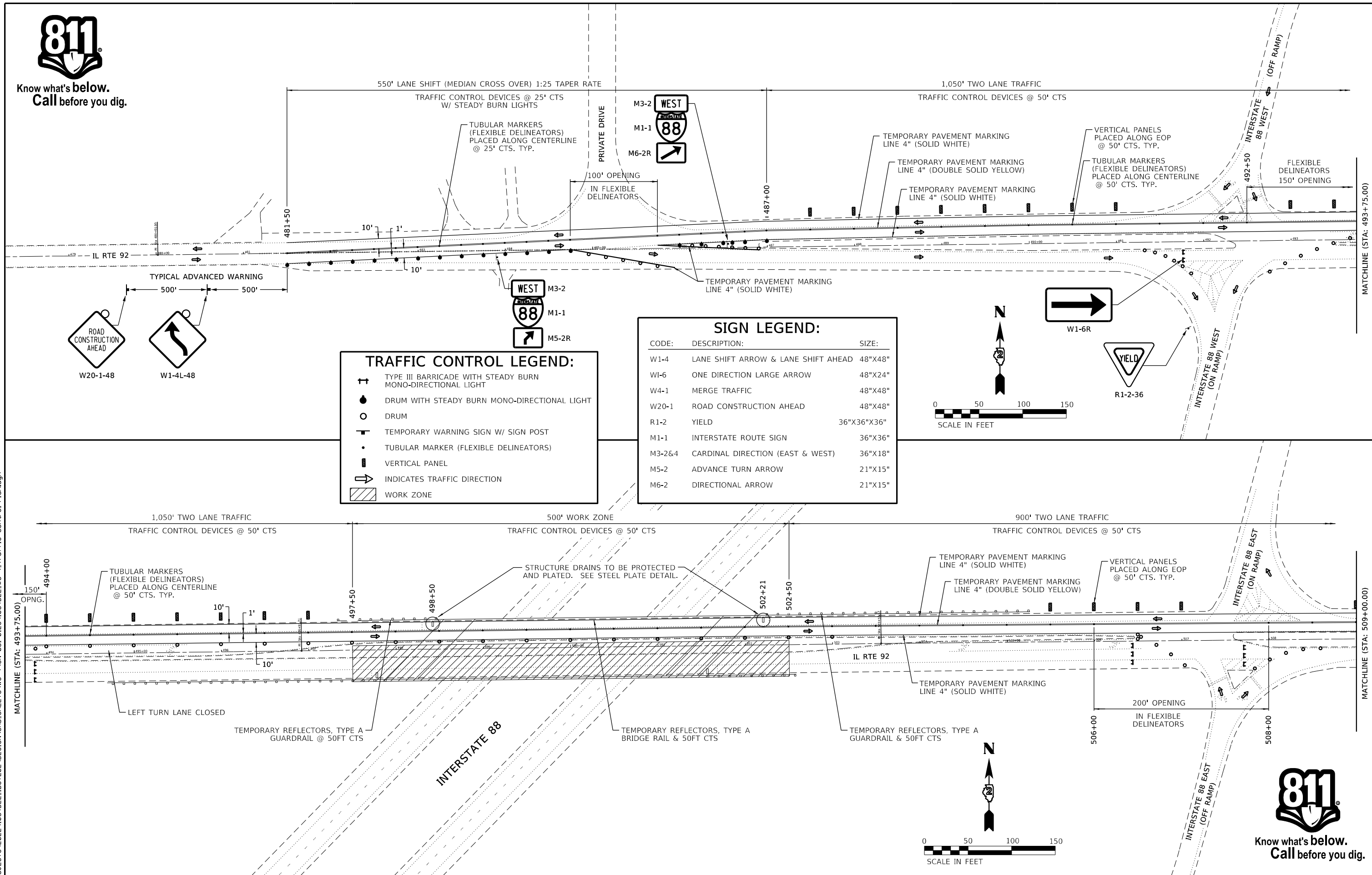
MEDIAN REPLACEMENT PLAN & TYPICAL SECTION
STRUCTURE NO. 081-0125

SHEET 1 OF 1 SHEETS

F.A.I. RTE.	SECTION	COUNTY	TOTAL SHEETS	SHEET NO.
88	(161-1HB-4)BJR	ROCK ISLAND	25	7
WHA# 1054D22		CONTRACT NO. 64S24		
C-92-031-23	ILLINOIS			



Know what's below.
Call before you dig.

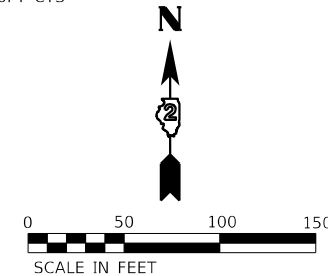
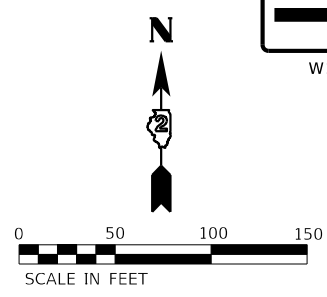


TRAFFIC CONTROL LEGEND:

- TYPE III BARRICADE WITH STEADY BURN MONO-DIRECTIONAL LIGHT
- DRUM WITH STEADY BURN MONO-DIRECTIONAL LIGHT
- DRUM
- TEMPORARY WARNING SIGN W/ SIGN POST
- TUBULAR MARKER (FLEXIBLE DELINEATORS)
- VERTICAL PANEL
- INDICATES TRAFFIC DIRECTION
- WORK ZONE

SIGN LEGEND:

CODE:	DESCRIPTION:	SIZE:
W1-4	LANE SHIFT ARROW & LANE SHIFT AHEAD	48"X48"
W1-6	ONE DIRECTION LARGE ARROW	48"X24"
W4-1	MERGE TRAFFIC	48"X48"
W20-1	ROAD CONSTRUCTION AHEAD	48"X48"
R1-2	YIELD	36"X36"X36"
M1-1	INTERSTATE ROUTE SIGN	36"X36"
M3-2&4	CARDINAL DIRECTION (EAST & WEST)	36"X18"
M5-2	ADVANCE TURN ARROW	21"X15"
M6-2	DIRECTIONAL ARROW	21"X15"



FILE = S:\PROJECTS\2022\1054D22\1001202\DESIGN\CAD SHEETS\WO 4\SN 081-0125\1054D22.WO 4.Traffic Control Plan.dgn



USER NAME = greg	DESIGNED - GBG	REVISED -
PLOT SCALE = 100.0000 / 1	DRAWN - DLB	REVISED -
PLOT DATE = 12/1/2022	CHECKED - GFS	REVISED -
	DATE - 12/1/2022	REVISED -

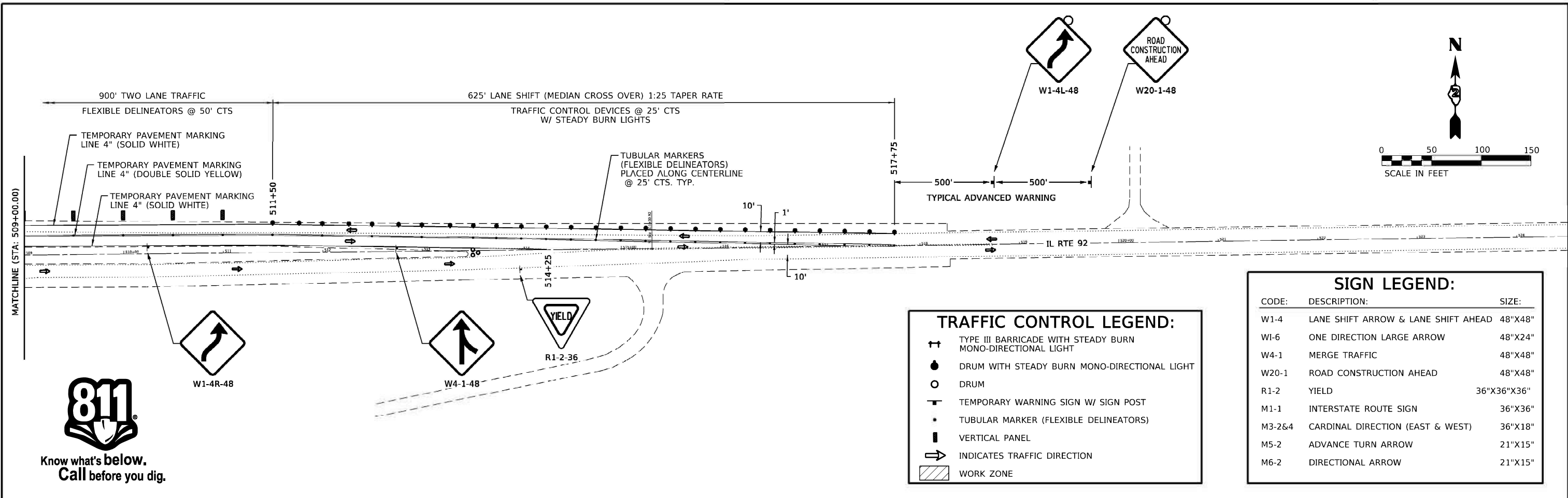
STATE OF ILLINOIS
DEPARTMENT OF TRANSPORTATION

TRAFFIC CONTROL PLAN -- STAGE I
STRUCTURE NO. 081-0125
SHEET 1 OF 4 SHEETS

F.A.I. RTE. 88	SECTION (161-1HB-4)BJR	COUNTY ROCK ISLAND	TOTAL SHEETS 25	SHEET NO. 8
WHA# 1054D22		CONTRACT NO. 64S24		
C-92-031-23		ILLINOIS		



Know what's below.
Call before you dig.



TRAFFIC CONTROL LEGEND:		
	TYPE III BARRICADE WITH STEADY BURN MONO-DIRECTIONAL LIGHT	
	DRUM WITH STEADY BURN MONO-DIRECTIONAL LIGHT	
	DRUM	
	TEMPORARY WARNING SIGN W/ SIGN POST	
	TUBULAR MARKER (FLEXIBLE DELINEATORS)	
	VERTICAL PANEL	
	INDICATES TRAFFIC DIRECTION	
	WORK ZONE	

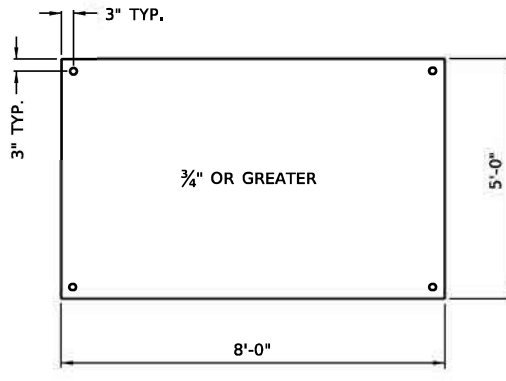
SIGN LEGEND:		
CODE:	DESCRIPTION:	SIZE:
W1-4	LANE SHIFT ARROW & LANE SHIFT AHEAD	48"X48"
W1-6	ONE DIRECTION LARGE ARROW	48"X24"
W4-1	MERGE TRAFFIC	48"X48"
W20-1	ROAD CONSTRUCTION AHEAD	48"X48"
R1-2	YIELD	36"X36"X36"
M1-1	INTERSTATE ROUTE SIGN	36"X36"
M3-2&4	CARDINAL DIRECTION (EAST & WEST)	36"X18"
M5-2	ADVANCE TURN ARROW	21"X15"
M6-2	DIRECTIONAL ARROW	21"X15"

GENERAL NOTES:

- ALL TEMPORARY PAVEMENT MARKINGS SHALL BE PAINT.
- THE CONTRACTOR SHALL MAKE EVERY EFFORT DURING CONSTRUCTION TO PROTECT BRIDGE SCUPPERS AND APPROACH DRAINS WITH STEEL PLATE OR APPROVED EQUIVALENT. SEE STEEL PLATE DETAIL, THIS WORK SHALL BE INCLUDED IN THE COST OF TRAFFIC CONTROL AND PROTECTION, (SPECIAL).
- GUARDRAIL REFLECTORS, TYPE A SHALL BE PLACED ALONG THE EXISTING NORTH GUARDRAIL AND BRIDGE RAIL PER IDOT STANDARD 782006. THEY SHALL BE SPACED AT 50FT CENTERS TO COINCIDE WITH THE OTHER TEMPORARY TRAFFIC CONTROL DEVICES. THE MOUNTING METHOD SHALL ALLOW FOR THE REFLECTORS TO BE REMOVED WITHOUT DAMAGE TO THE EXISTING GUARDRAIL.

STAGE I SPECIFIC NOTES / CONSTRUCTION SEQUENCE:

- ALL EXISTING PAVEMENT MARKINGS THAT CONFLICT WITH THE PROPOSED STAGE TRAFFIC CONTROL SHALL BE REMOVED PRIOR TO IMPLEMENTING STAGE I. EXISTING PAVEMENT MARKINGS SHALL BE REMOVED USING THE PAY ITEM PAVEMENT MARKING REMOVAL - WATER BLASTING. DURING THE PRE-STAGE I PAVEMENT MARKING REMOVAL AND INSTALLATION WORK, TRAFFIC SHALL BE MAINTAINED BY THE CONTRACTOR UTILIZING IDOT STANDARDS 701201 AND 701311 DURING DAY ONLY AND MOVING OPERATIONS.
- INSTALL STAGE I TRAFFIC CONTROL DEVICES, PAVEMENT MARKINGS, AND PROTECTIONS TO THE LINES AND GRADES SHOWN ON TRAFFIC CONTROL PLAN, OR AS SPECIFIED BY THE ENGINEER.
- COMPLETE ALL BRIDGE AND ROADWAY IMPROVEMENTS WITHIN THE SOUTH HALF OF IL ROUTE 92.
- OPEN TRAFFIC TO THE SOUTH PORTION OF IL ROUTE 92 AND INSTALL STAGE II TRAFFIC CONTROL PER THE TRAFFIC CONTROL PLAN.



STEEL PLATE DETAIL
N.T.S.

NOTES:

- DURING MOT STAGE I, THE APPROACH DRAIN AT THE CORNERS OF THE BRIDGES NEED TO BE PROTECTED WITH 3/4" (MIN.) STEEL PLATE ANCHORED WITH 4 ANCHOR BOLTS INTO THE PAVEMENT.
- THE EDGES OF THE STEEL PLATE SHALL BE TAPERED WITH HMA TO AVOID BUMP FOR TRAFFIC.
- CONTRACTOR SHALL MAKE EVERY EFFORT DURING CONSTRUCTION TO PROTECT BRIDGE SCUPPERS AND APPROACH DRAINS WITH STEEL PLATE OR APPROVED EQUIVALENT. SEE PLATE DETAIL. THIS WORK SHALL BE INCIDENTAL AND INCLUDED AS PART OF "TRAFFIC CONTROL AND PROTECTION (SPECIAL)"

FILE = S:\PROJECTS\2022\1054D22\1054D22.DWG\DESIGN\CAD_SHEETS\WD 4\SN 081-0125\1054D22.WD 4-Traffic Control Plan.dgn



USER NAME = greg	DESIGNED - GBG	REVISED -
PLOT SCALE = 1/8" = 1'-0"	DRAWN - DLB	REVISED -
PLOT DATE = 12/1/2022	CHECKED - GFS	REVISED -
	DATE = 12/1/2022	REVISED -

STATE OF ILLINOIS
DEPARTMENT OF TRANSPORTATION

TRAFFIC CONTROL PLAN -- STAGE I
STRUCTURE NO. 081-0125

SHEET 2 OF 4 SHEETS

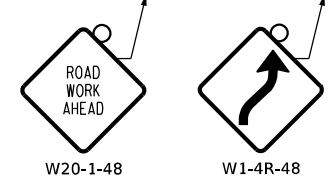
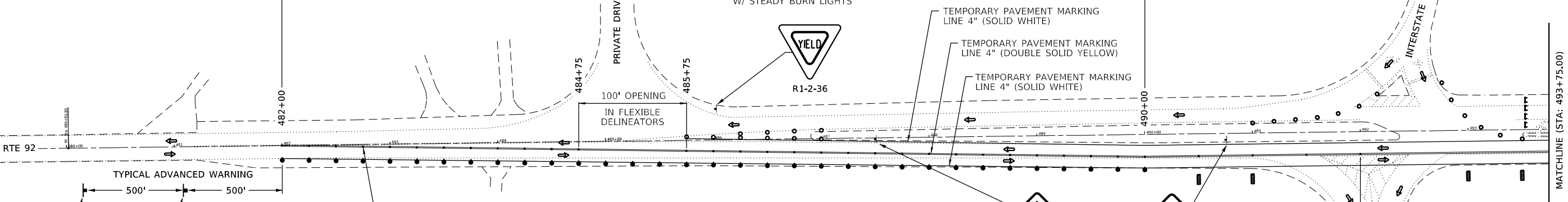
F.A.I. RTE	SECTION	COUNTY	TOTAL SHEETS	SHEET NO.
88	(161-1HB-4)BJR	ROCK ISLAND	25	9
WHA# 1054D22		CONTRACT NO. 64S24		
C-9-0 3 2 3		ILLINOIS		



Know what's below.
Call before you dig.

800' LANE SHIFT (MEDIAN CROSS OVER)
TRAFFIC CONTROL DEVICES @ 25' CTS
W/ STEADY BURN LIGHTS

750' TWO LANE TRAFFIC
TRAFFIC CONTROL DEVICES @ 50' CTS

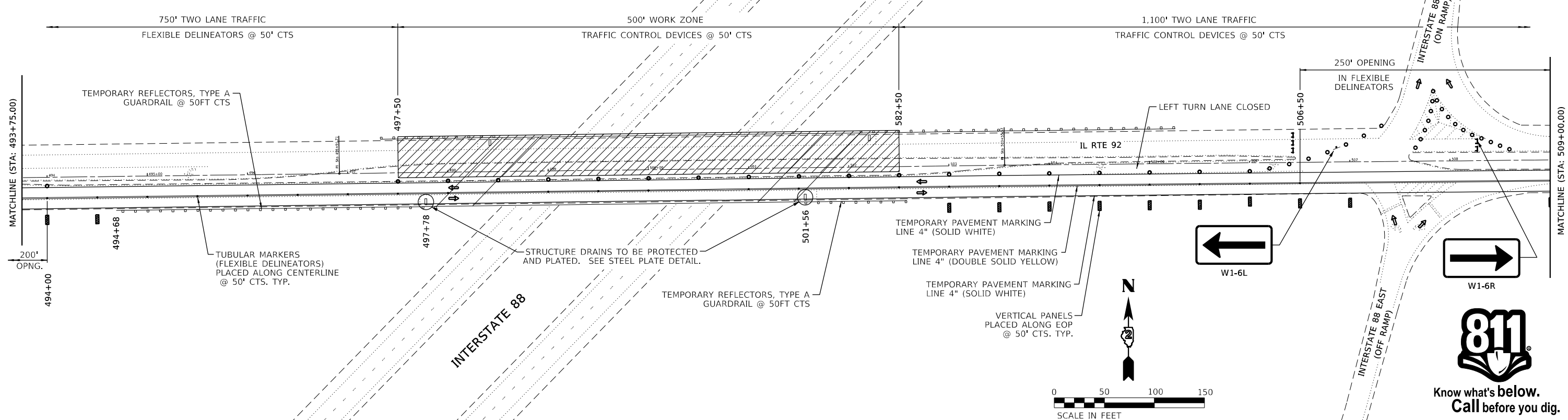
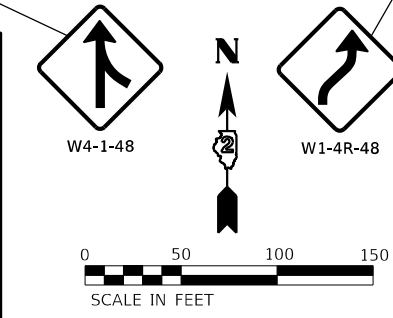


TRAFFIC CONTROL LEGEND:

- TYPE III BARRICADE WITH STEADY BURN MONO-DIRECTIONAL LIGHT
- DRUM WITH STEADY BURN MONO-DIRECTIONAL LIGHT
- DRUM
- TEMPORARY WARNING SIGN W/ SIGN POST
- TUBULAR MARKER (FLEXIBLE DELINEATORS)
- VERTICAL PANEL
- INDICATES TRAFFIC DIRECTION
- WORK ZONE

SIGN LEGEND:

CODE:	DESCRIPTION:	SIZE:
W1-4	LANE SHIFT ARROW & LANE SHIFT AHEAD	48"X48"
W1-6	ONE DIRECTION LARGE ARROW	48"X24"
W4-1	MERGE TRAFFIC	48"X48"
W20-1	ROAD CONSTRUCTION AHEAD	48"X48"
R1-2	YIELD	36"X36"X36"
M1-1	INTERSTATE ROUTE SIGN	36"X36"
M3-2&4	CARDINAL DIRECTION (EAST & WEST)	36"X18"
M5-2	ADVANCE TURN ARROW	21"X15"
M6-2	DIRECTIONAL ARROW	21"X15"



FILE = S:\PROJECTS\2022\1054D22.IDOT\2022\DESIGN\CAD\SHEETS\NO 4.SN 081-0125\1054D22.WD 4.Traffic Control Plan.dgn

WILLET HOFMANN & ASSOCIATES INC.
ENGINEERING ARCHITECTURE LAND SURVEYING
809 EAST 2ND STREET, DIXON, IL 61021-0367
T: 815-284-3381 DESIGN FIRM: #184-000918

USER NAME = greg	DESIGNED - GBG	REVISED -
	DRAWN - DLB	REVISED -
PLOT SCALE = 100.0000 / 1	CHECKED - GFS	REVISED -
PLOT DATE = 12/1/2022	DATE - 12/1/2022	REVISED -

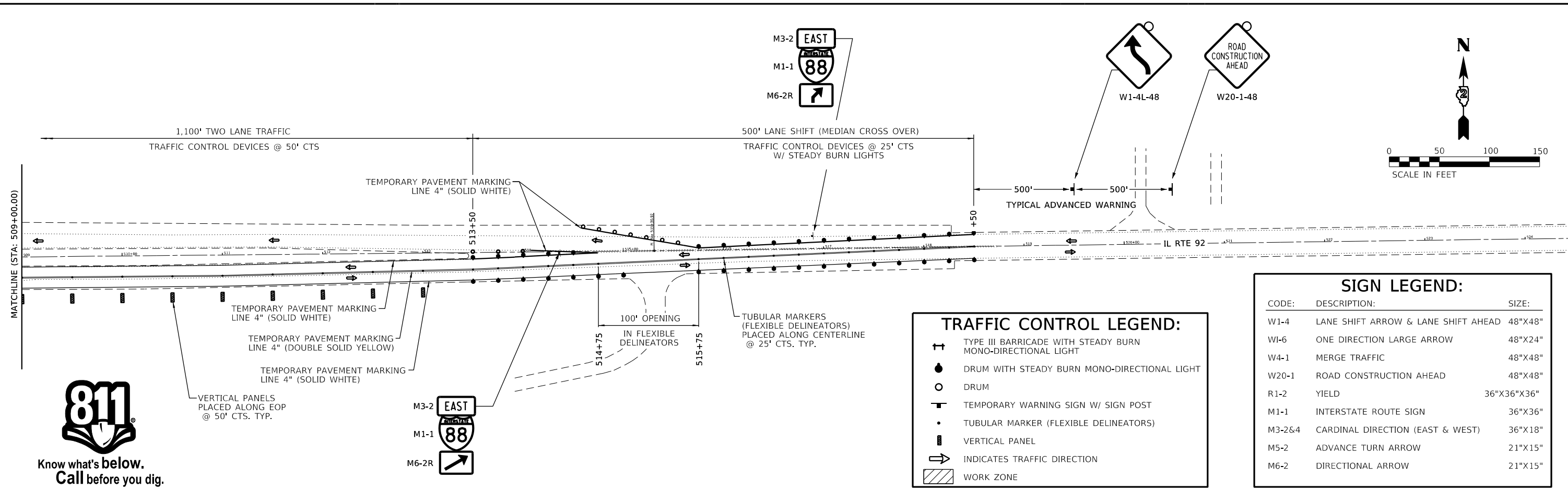
STATE OF ILLINOIS
DEPARTMENT OF TRANSPORTATION

TRAFFIC CONTROL PLAN -- STAGE II
STRUCTURE NO. 081-0125
SHEET 3 OF 4 SHEETS

F.A.I. RTE. 88	SECTION (161-1HB-1)BJR	COUNTY ROCK ISLAND	TOTAL SHEETS 25	SHEET NO. 10
WHA# 1054D22		CONTRACT NO. 64S24		
C-92-031-23	ILLINOIS			



Know what's below.
Call before you dig.

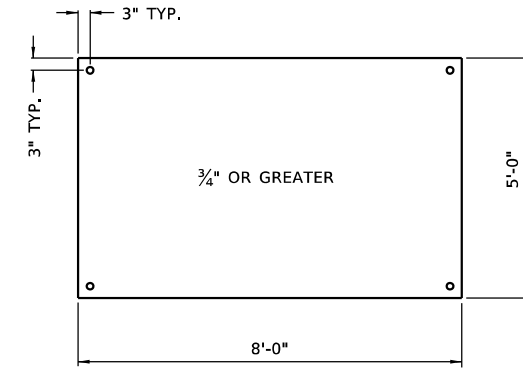


GENERAL NOTES:

- ALL TEMPORARY PAVEMENT MARKINGS SHALL BE PAINT.
- THE CONTRACTOR SHALL MAKE EVERY EFFORT DURING CONSTRUCTION TO PROTECT BRIDGE SCUPPERS AND APPROACH DRAINS WITH STEEL PLATE OR APPROVED EQUIVALENT. SEE STEEL PLATE DETAIL, THIS WORK SHALL BE INCLUDED IN THE COST OF TRAFFIC CONTROL AND PROTECTION, (SPECIAL).
- GUARDRAIL REFLECTORS, TYPE A SHALL BE PLACED ALONG THE EXISTING SOUTH GUARDRAIL PER IDOT STANDARD 782006. THEY SHALL BE SPACED AT 50FT CENTERS TO COINCIDE WITH THE OTHER TEMPORARY TRAFFIC CONTROL DEVICES. THE MOUNTING METHOD SHALL ALLOW FOR THE REFLECTORS TO BE REMOVED WITHOUT DAMAGE TO THE EXISTING GUARDRAIL. NO TEMPORARY REFLECTORS SHALL BE PLACED ALONG THE NEWLY CONSTRUCTED BRIDGE WALL. DURING STAGE I CONSTRUCTION THE PERMANENT LINEAR DELINEATION PANELS, 6 INCH WILL HAVE ALREADY BEEN INSTALLED.

STAGE II SPECIFIC NOTES / CONSTRUCTION SEQUENCE:

- ALL EXISTING PAVEMENT MARKINGS AND TEMPORARY PAVEMENT MARKINGS THAT CONFLICT WITH THE PROPOSED STAGE II TRAFFIC CONTROL SHALL BE REMOVED. EXISTING PAVEMENT MARKINGS SHALL BE REMOVED USING THE PAY ITEM PAVEMENT MARKING REMOVAL - WATER BLASTING. DURING THE TRANSITION PAVEMENT MARKING REMOVAL AND INSTALLATION WORK, TRAFFIC SHALL BE MAINTAINED BY THE CONTRACTOR UTILIZING IDOT STANDARDS 701201 AND 701311 DURING DAY ONLY AND MOVING OPERATIONS.
- INSTALL STAGE II TRAFFIC CONTROL DEVICES, PAVEMENT MARKINGS, AND PROTECTIONS TO THE LINES AND GRADES SHOW ON THE TRAFFIC CONTROL PLAN, OR AS SPECIFIED BY THE ENGINEER.
- COMPLETE ALL BRIDGE AND ROADWAY IMPROVEMENTS WITHIN THE NORTH HALF OF IL ROUTE 92.
- REMOVE TRAFFIC CONTROL DEVICES AND RESTORE ROADWAY TO EXISTING TRAFFIC CONFIGURATION, AND COMPLETE ALL FINAL PAVEMENT MARKINGS.



NOTES:

- DURING MOT STAGE I, THE APPROACH DRAIN AT THE CORNERS OF THE BRIDGES NEED TO BE PROTECTED WITH 3/4" (MIN.) STEEL PLATE ANCHORED WITH 4 ANCHOR BOLTS INTO THE PAVEMENT.
- THE EDGES OF THE STEEL PLATE SHALL BE TAPERED WITH HMA TO AVOID BUMP FOR TRAFFIC.

FILE = S:\PROJECTS\2022\1054D22\IDOT2022\DESIGN\CAD SHEETS\NO 4\SN 081-0125\1054D22.WD 4-Traffic Control Plan.dgn

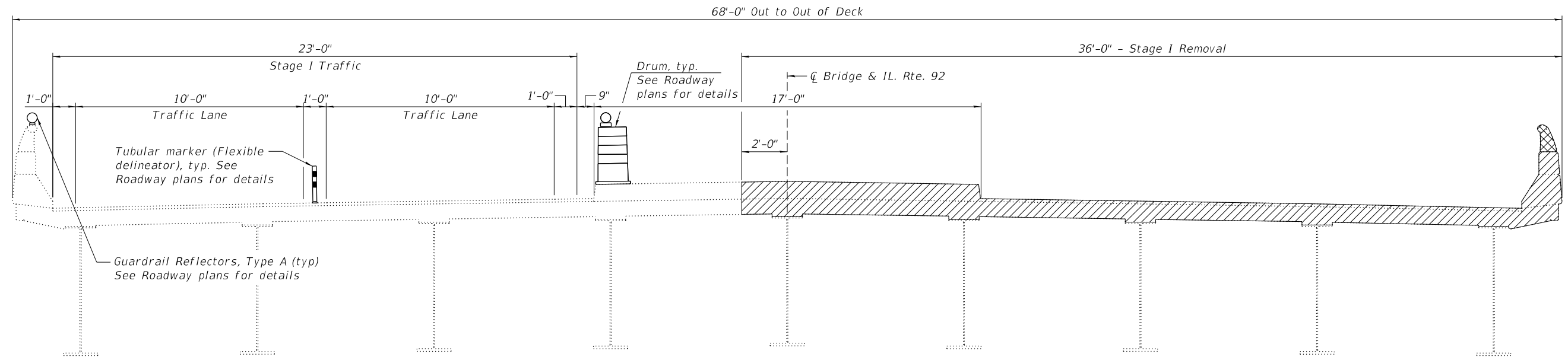


USER NAME = greg	DESIGNED - GBG	REVISED -
PLOT SCALE = 100.0000' / 1"	DRAWN - DLB	REVISED -
PLOT DATE = 12/1/2022	CHECKED - GFS	REVISED -
	DATE - 12/1/2022	REVISED -

STATE OF ILLINOIS
DEPARTMENT OF TRANSPORTATION

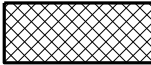

TRAFFIC CONTROL PLAN -- STAGE II
STRUCTURE NO. 081-0125
SHEET 4 OF 4 SHEETS

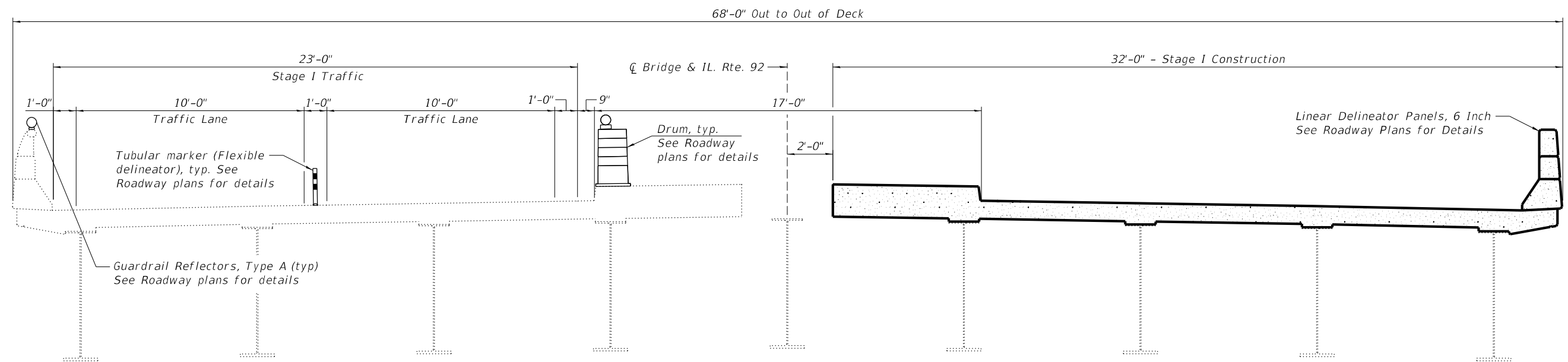
F.A.I. RTE.	SECTION	COUNTY	TOTAL SHEETS	SHEET NO.
88	(161-1HB-4)BJR	ROCK ISLAND	25	11
WHA# 1054D22		CONTRACT NO. 64S24		
C-92-031-23		ILLINOIS		



STAGE I REMOVAL
 (Looking East)
 (Showing deck, approach spans similar)

LEGEND

-  Railing Removal (Cost included with "Retrofit Concrete Parapet"). See structural sheet 8 of 11.
-  Concrete Removal at joint locations only. See structural sheet 4-6 of 11.



STAGE I CONSTRUCTION
 (Looking East)
 (Showing deck, approach spans similar)

(Sheet 1 of 2)

FILE = S:\PROJECTS\2022\1054D22\DESIGN\CAD_SHEETS\NO 4\SN 081-0125\1054D22_Stage Construction 1 & ILdgn



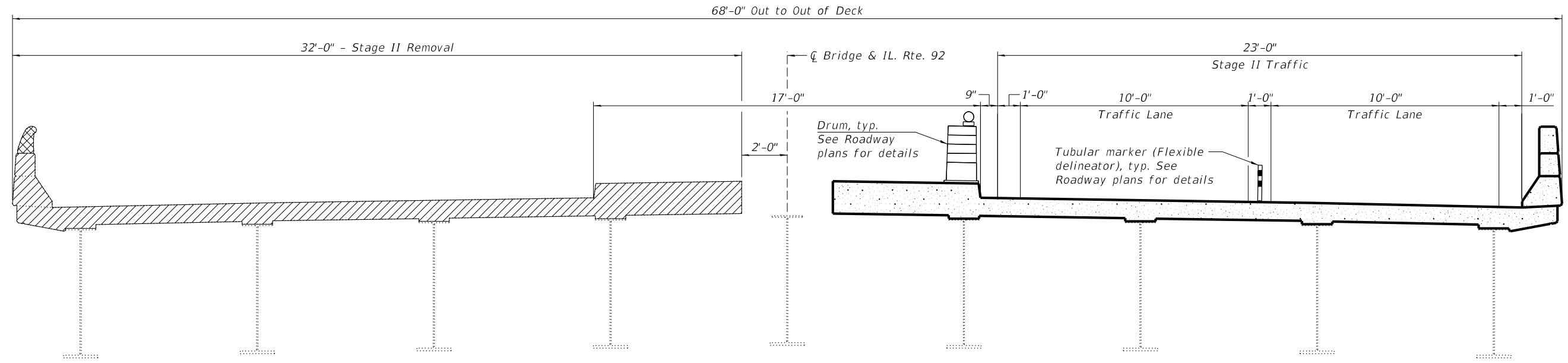
USER NAME = greg	DESIGNED - SM	REVISED -
PLOT SCALE = 2.0000' / 1" =	DRAWN - FDL	REVISED -
PLOT DATE = 12/1/2022	CHECKED - DCB	REVISED -
	DATE - 12/1/2022	REVISED -

**STATE OF ILLINOIS
 DEPARTMENT OF TRANSPORTATION**

**STAGING DETAILS
 STRUCTURE NO. 081-0125**

STRUCTURAL SHEET 2 OF 11 SHEETS

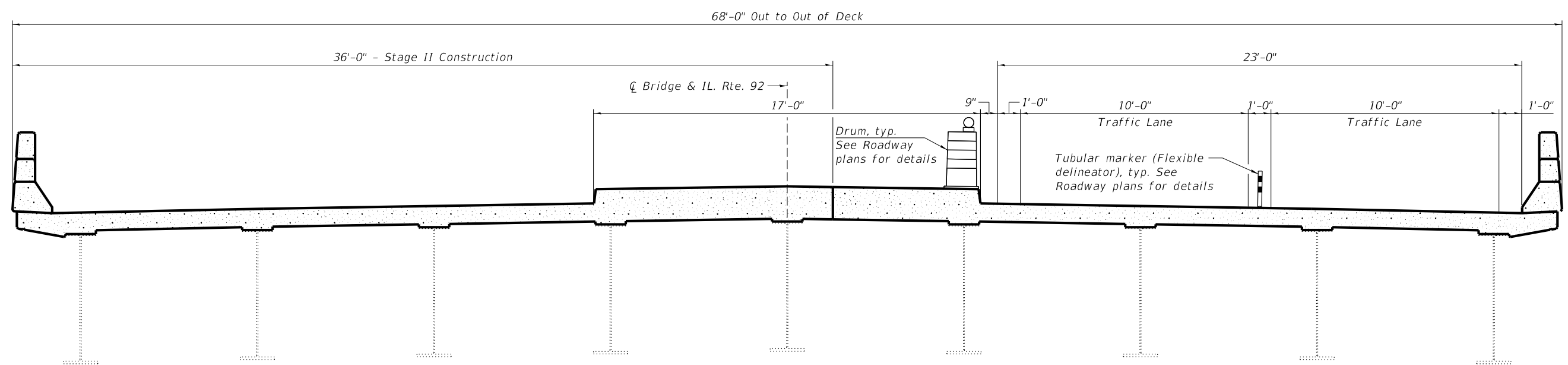
F.A.I. RTE.	SECTION	COUNTY	TOTAL SHEETS	SHEET NO.
88	(161-1HB-4)BJR	ROCK ISLAND	25	13
WHA# 1054D22		CONTRACT NO. 64S24		
C-92-031-23	ILLINOIS			



STAGE II REMOVAL
(Looking East)
(Showing deck, approach spans similar)

LEGEND

	Railing Removal (Cost included with "Retrofit Concrete Parapet"). See structural sheet 8 of 11.
	Concrete Removal at joint locations only. See structural sheet 4-6 of 11.



STAGE II CONSTRUCTION
(Looking East)
(Showing deck, approach spans similar)

(Sheet 2 of 2)

FILE = S:\PROJECTS\2022\1054D22.IDOT\2022.DESIGN\CAD.SHEETS\NO.4\SN.081-0125\1054D22.Stage Construction 1 & ILdgn



USER NAME = greg	DESIGNED - SM	REVISED -
	DRAWN - FDL	REVISED -
PLOT SCALE = 2.0000' / 1"	CHECKED - DCB	REVISED -
PLOT DATE = 12/1/2022	DATE - 12/1/2022	REVISED -

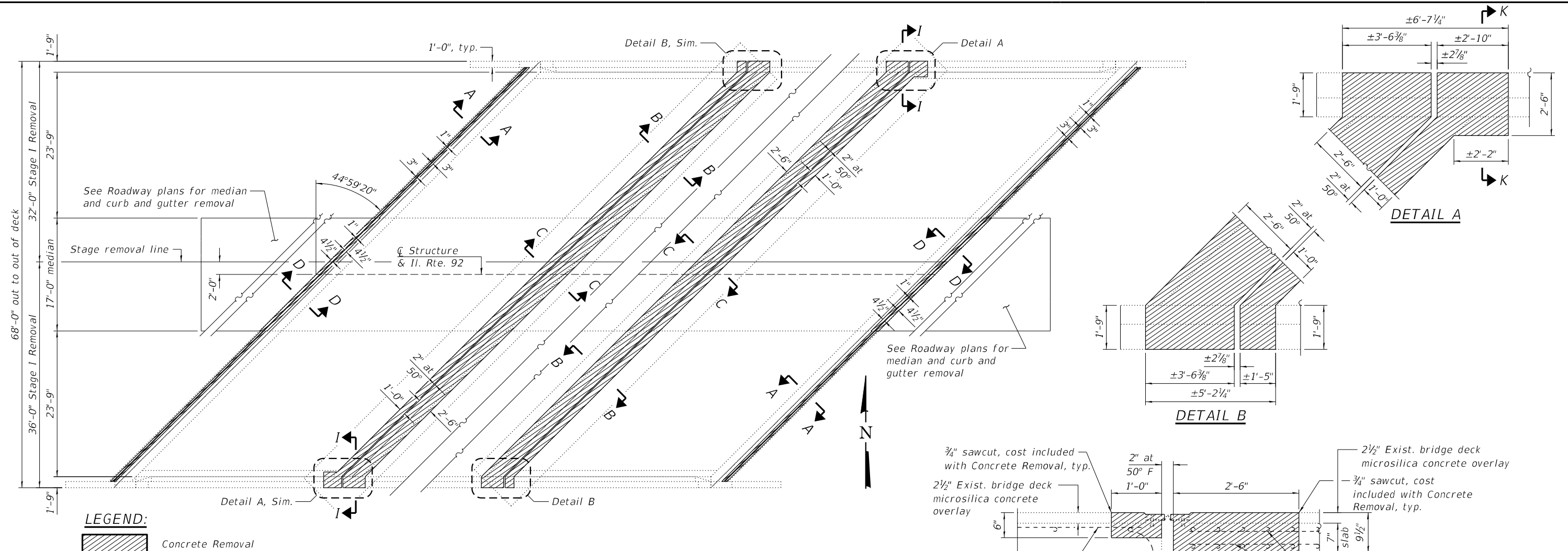
STATE OF ILLINOIS
DEPARTMENT OF TRANSPORTATION

STAGING DETAILS
STRUCTURE NO. 081-0125

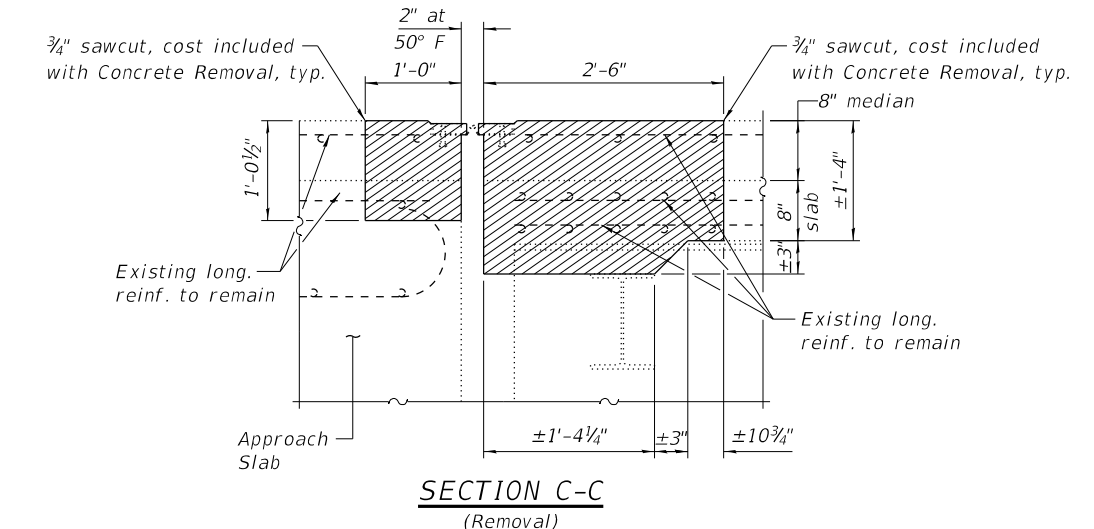
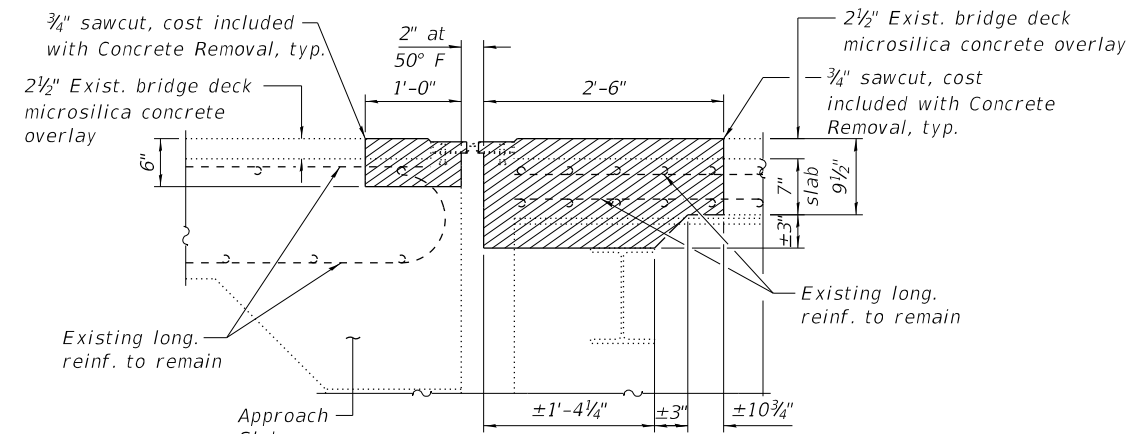
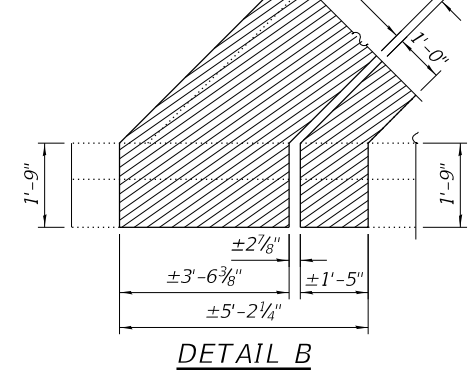
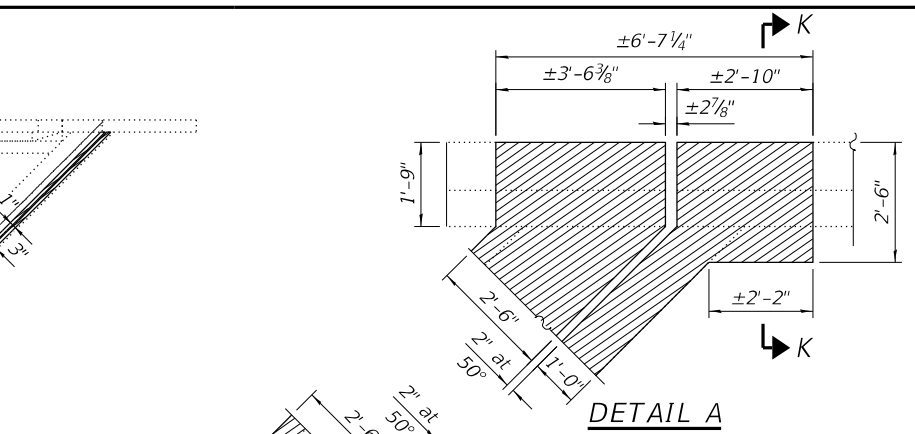
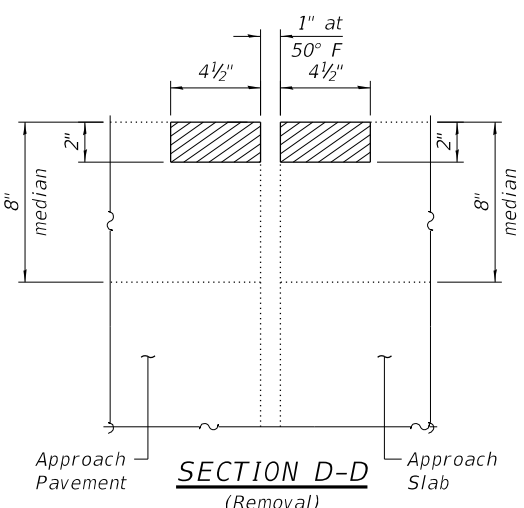
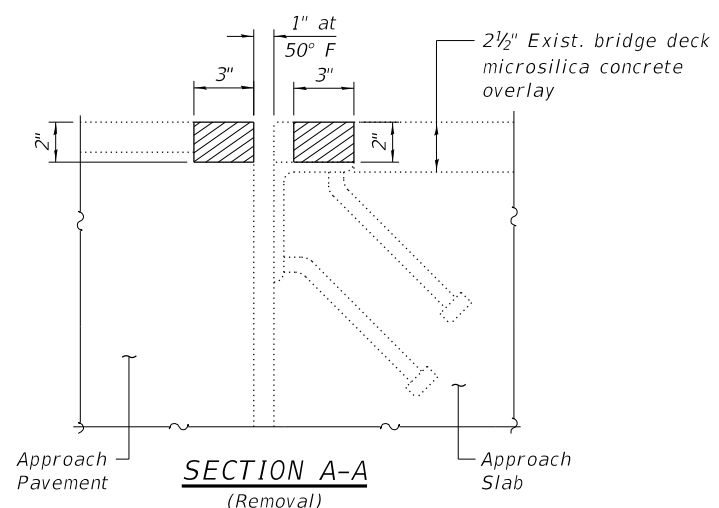
STRUCTURAL SHEET 3 OF 11 SHEETS

F.A.I. RTE.	SECTION	COUNTY	TOTAL SHEETS	SHEET NO.
88	(161-1HB-4)BJR	ROCK ISLAND	25	14
WHA# 1054D22		CONTRACT NO. 64S24		
C-92-031-23	ILLINOIS			

FILE = S:\PROJECTS\2022\1054D22.IDOT\2022.DESIGN\CAD.SHEETS\NO. 4.SN.081-0125\1054D22-Joint Replacement Details - 1 of 3.dgn



NOTE:
 Cost of the removal of existing joints will not be measured for payment and will be included in the contract unit price per cubic yard for Concrete Removal.



USER NAME = frank	DESIGNED - SM	REVISED -
PLOT SCALE = 2.0000' / 1"	DRAWN - FDL	REVISED -
PLOT DATE = 1/20/2023	CHECKED - DCB	REVISED -
	DATE - 1/20/2023	REVISED -

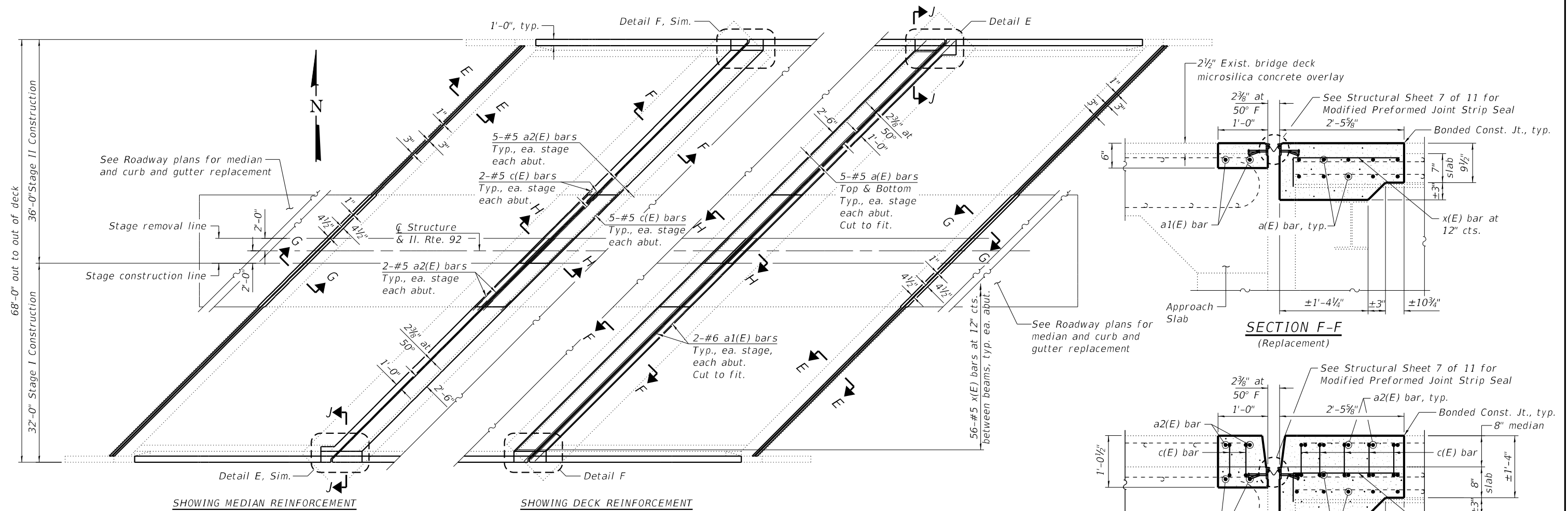
**STATE OF ILLINOIS
 DEPARTMENT OF TRANSPORTATION**

**JOINT REPLACEMENT DETAILS - 1 OF 3
 STRUCTURE NO. 081-0125**

STRUCTURAL SHEET 4 OF 11 SHEETS

F.A.I. RTE.	SECTION	COUNTY	TOTAL SHEETS	SHEET NO.
88	(161-1HB-1)BJR	ROCK ISLAND	25	15
	WHA# 1054D22		CONTRACT NO. 64S24	
C-92-031-23	ILLINOIS			

FILE = S:\PROJECTS\2022\1054D22.IDOT\2022.DESIGN\CAD.SHEETS\NO. 4.SN.081-0125\1054D22-Joint Replacement Details - 2 of 3.dgn

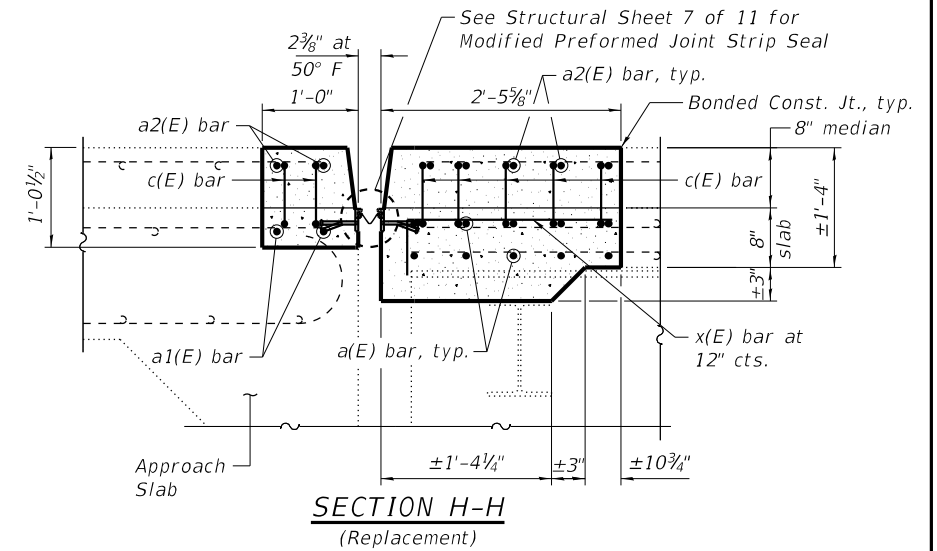
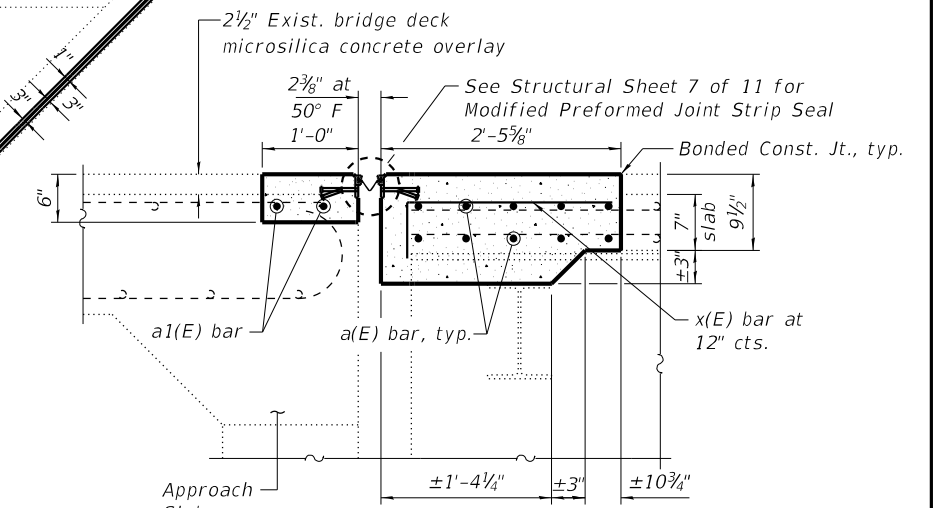


REPLACEMENT PARTIAL PLAN VIEW
(Replacement)
(Parapet reinforcement not shown for clarity)

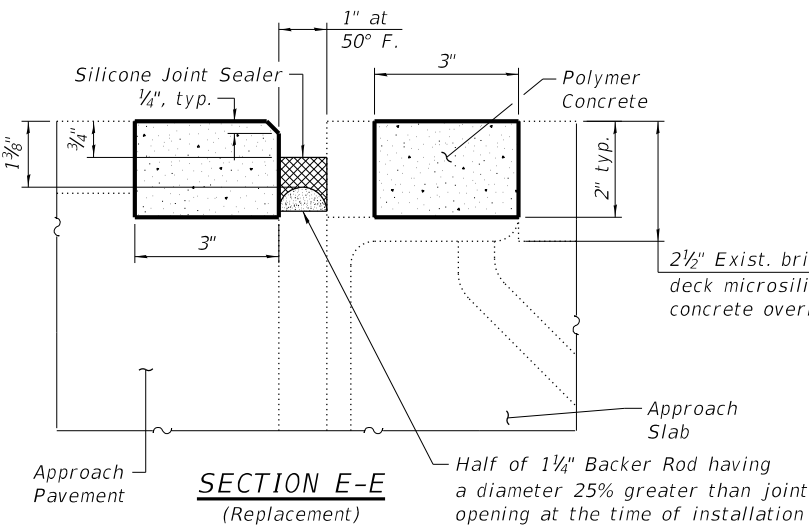
MINIMUM BAR LAP

#5 bar = 3'-6"
#6 bar = 4'-0"

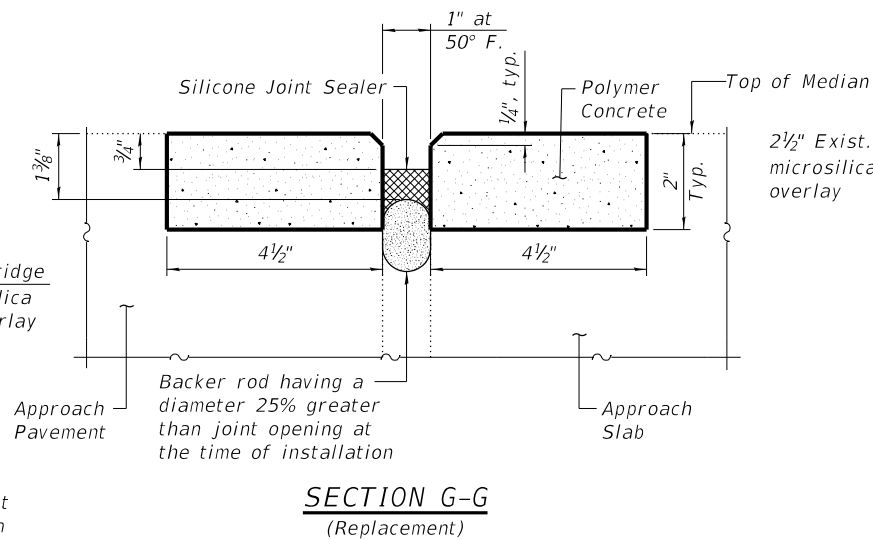
SECTION F-F
(Replacement)



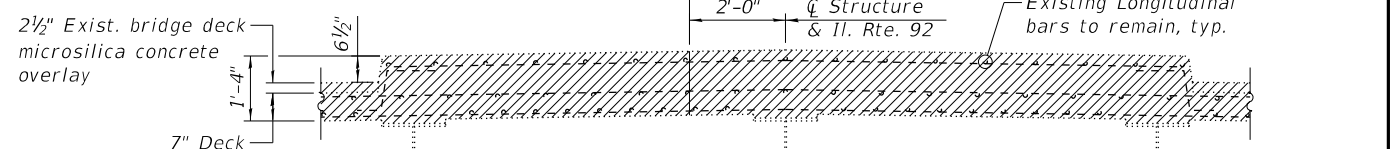
LEGEND:



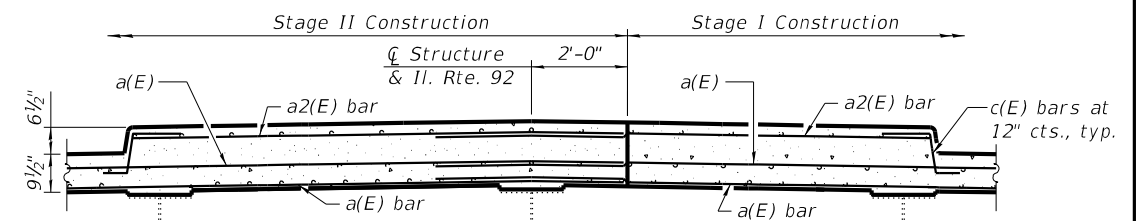
SECTION E-E
(Replacement)



SECTION G-G
(Replacement)



SECTION THRU MEDIAN AT JOINT
(Showing Removal; Looking East)



SECTION THRU MEDIAN AT JOINT
(Showing Proposed; Looking East)

NOTE:
See structural sheet 6 of 11 for Details E and F.



WILLETT HOFMANN & ASSOCIATES INC.
ENGINEERING ARCHITECTURE LAND SURVEYING
809 EAST 2ND STREET, DIXON, IL 61021-0367
T: 815-284-3381 DESIGN FIRM: #184-000918

USER NAME = frank	DESIGNED - SM	REVISED -
PLOT SCALE = 2.0000' / 1"	DRAWN - FDL	REVISED -
PLOT DATE = 1/20/2023	CHECKED - DCB	REVISED -
	DATE - 1/20/2023	REVISED -

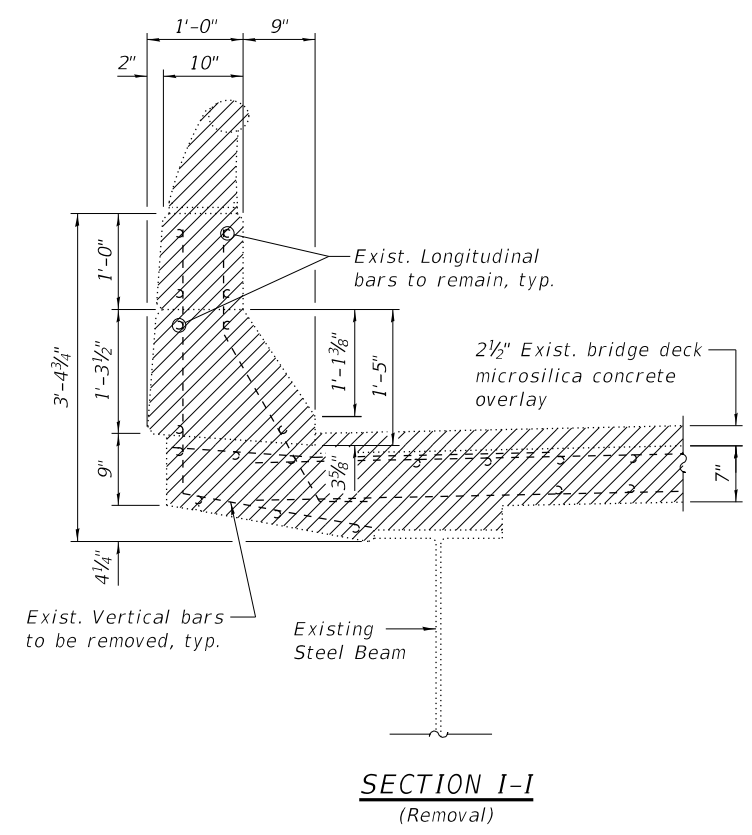
STATE OF ILLINOIS
DEPARTMENT OF TRANSPORTATION

JOINT REPLACEMENT DETAILS - 2 OF 3
STRUCTURE NO. 081-0125

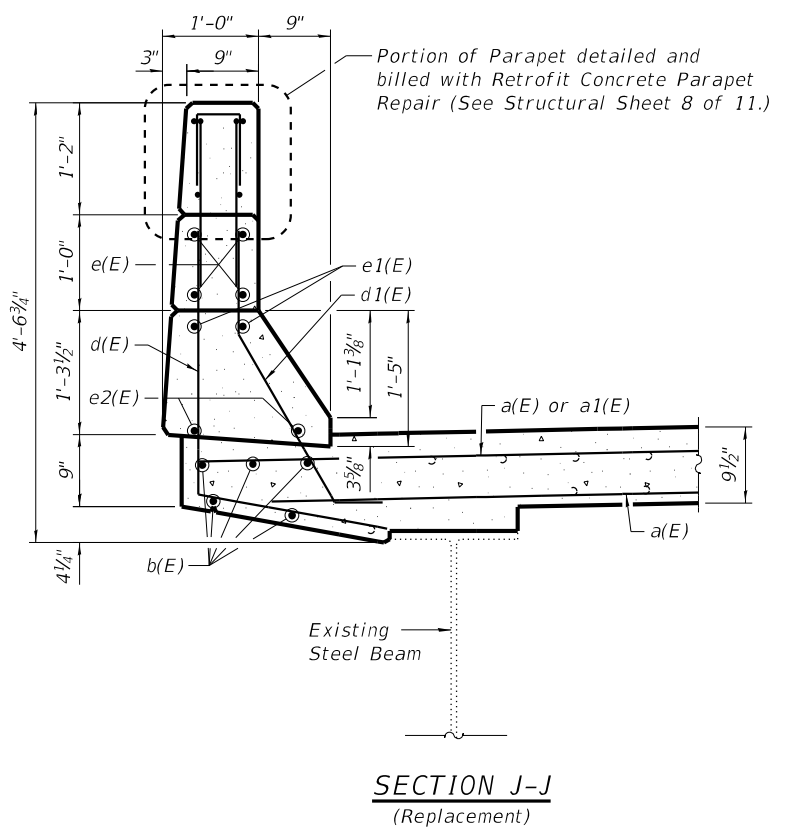
STRUCTURAL SHEET 5 OF 11 SHEETS

F.A.I. RTE. 88	SECTION (161-1HB-4)BJR	COUNTY ROCK ISLAND	TOTAL SHEETS 25	SHEET NO. 16
WHA# 1054D22		CONTRACT NO. 64S24		
C-92-031-23		ILLINOIS		

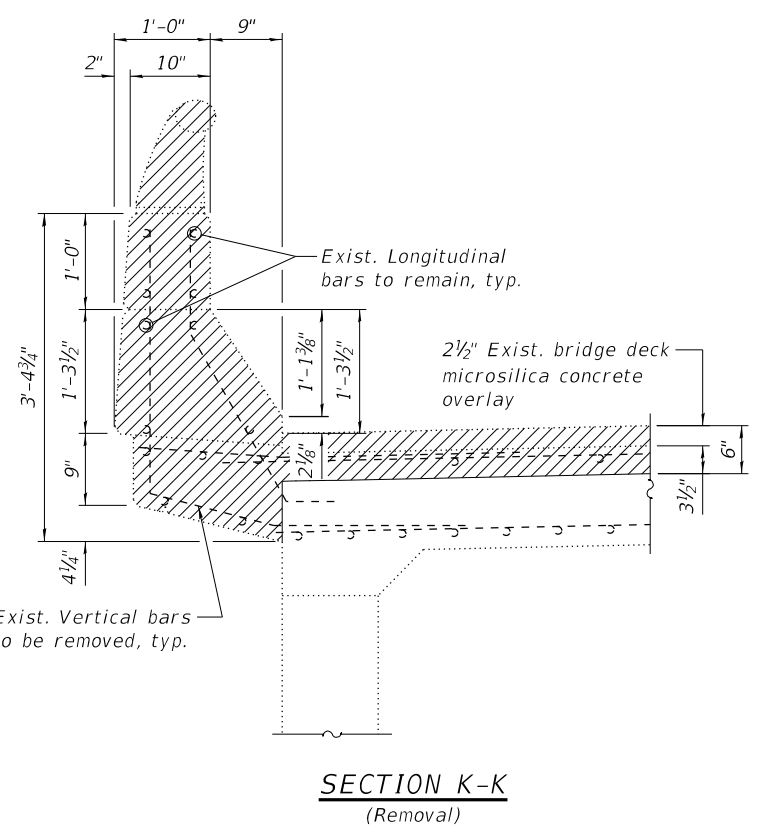
FILE = S:\PROJECTS\2022\1054D22.DESIGN\CAD.SHEETS\NO 4\SN 081-0125\1054D22-Joint Replacement Details - 3 of 3.dgn



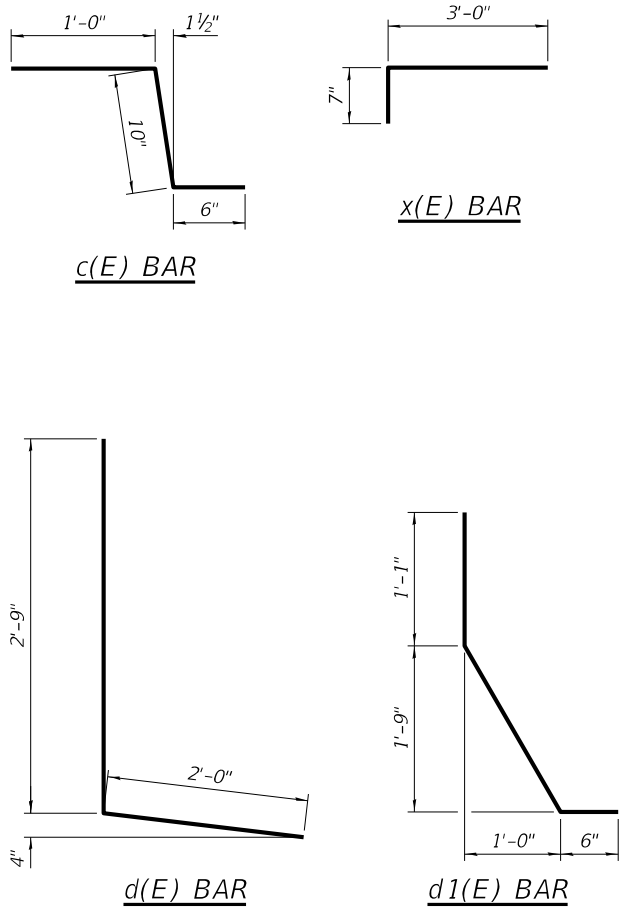
SECTION I-I
(Removal)



SECTION J-J
(Replacement)

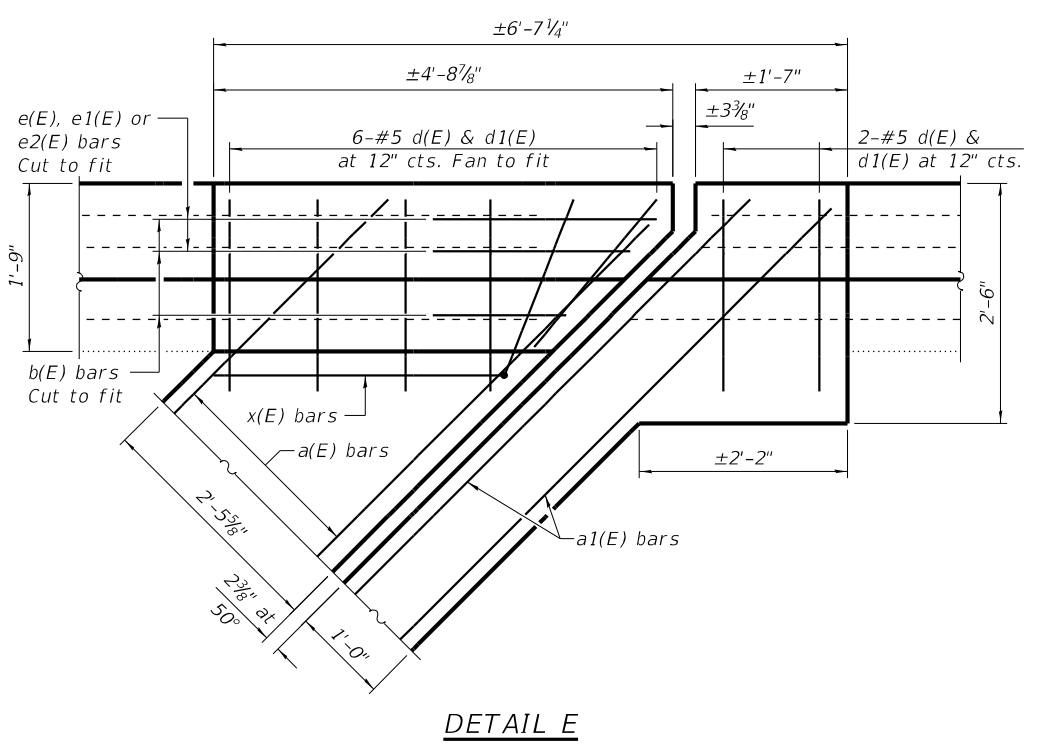


SECTION K-K
(Removal)

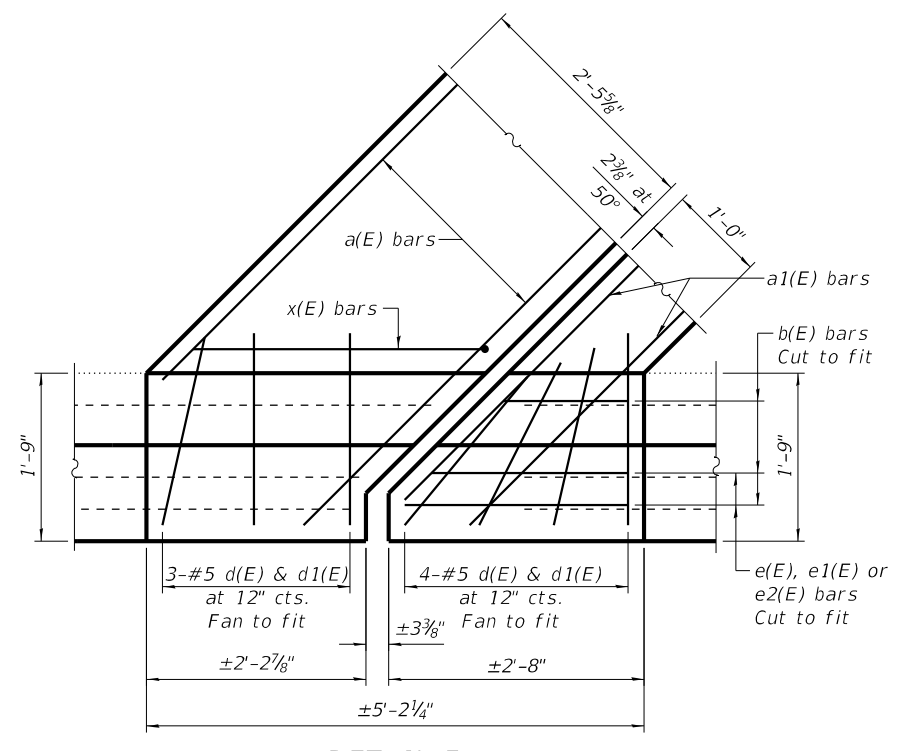


LEGEND

Concrete Removal



DETAIL E



DETAIL F

BILL OF MATERIAL

Bar	No.	Size	Length	Shape
a(E)	40	#5	50'-6"	—
a1(E)	8	#6	50'-6"	—
a2(E)	28	#5	14'-4"	—
b(E)	20	#5	2'-4"	—
c(E)	28	#5	2'-4"	┌
d(E)	30	#5	4'-9"	└
d1(E)	30	#5	3'-7"	└
e(E)	16	#4	2'-4"	—
e1(E)	8	#8	2'-4"	—
e2(E)	8	#5	2'-4"	—
x(E)	112	#5	3'-7"	┌
Concrete Removal			Cu. Yd.	29.1
Concrete Superstructure			Cu. Yd.	28.2
Protective Coat			Sq. Yd.	82
Reinforcement Bars, Epoxy Coated			Pound	4,030
Silicone Joint Sealer, 1"			Foot	189
Polymer Concrete			Cu. Ft.	18

NOTES:

All exposed concrete edges to have 3/4" chamfers.
Dimensions are based on a Rolled Rail Strip Seal Joint. If the Contractor elects to use the Welded Rail Strip Seal Joint, deck dimensions may require adjustments to satisfy the details on Modified Preformed Joint Strip Seal Sheet.



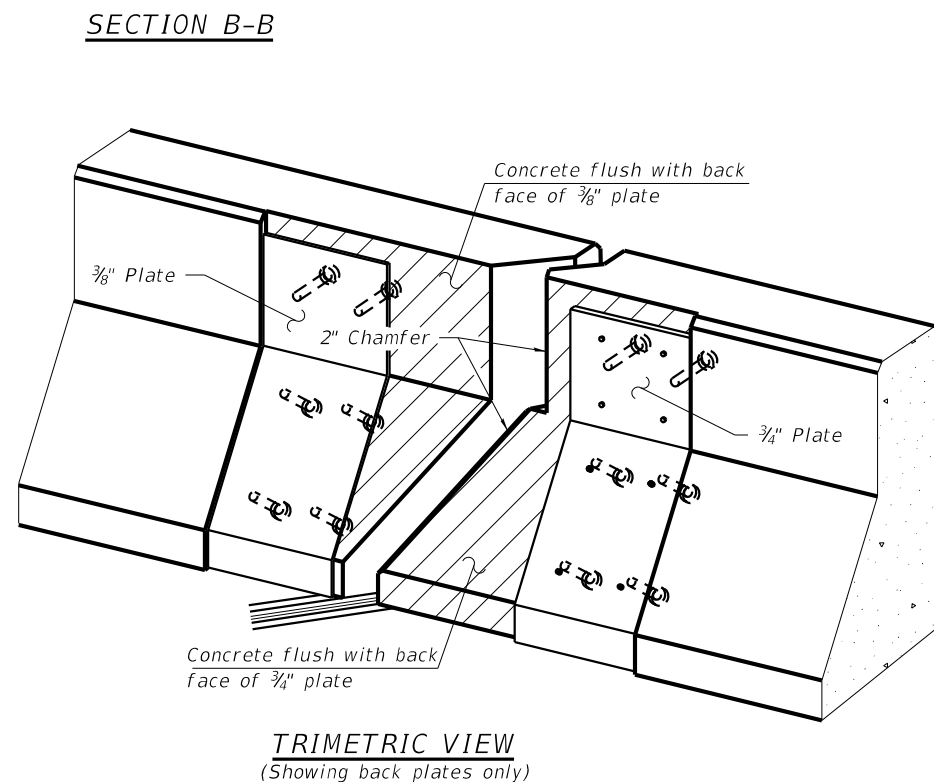
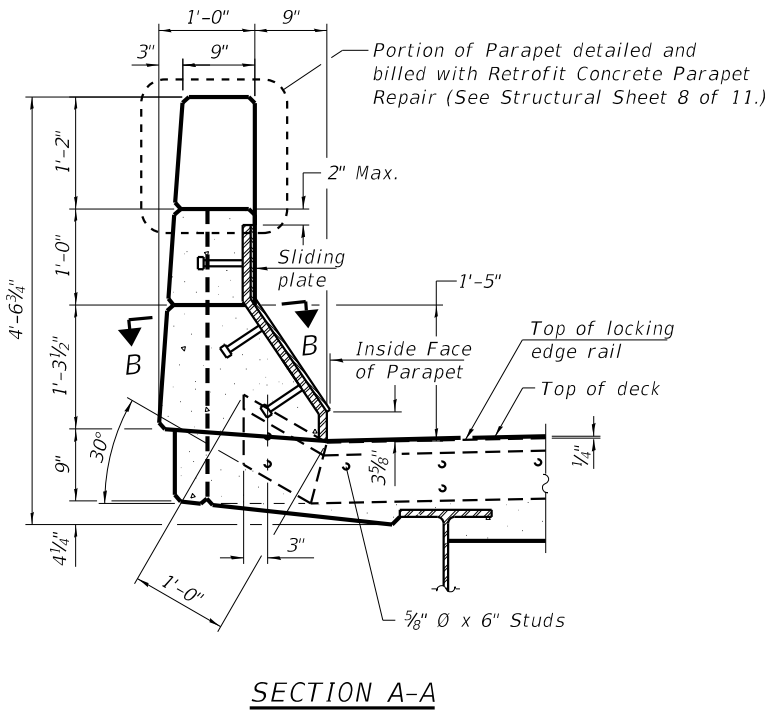
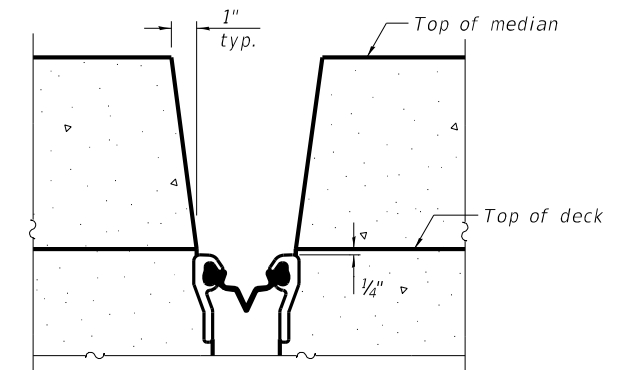
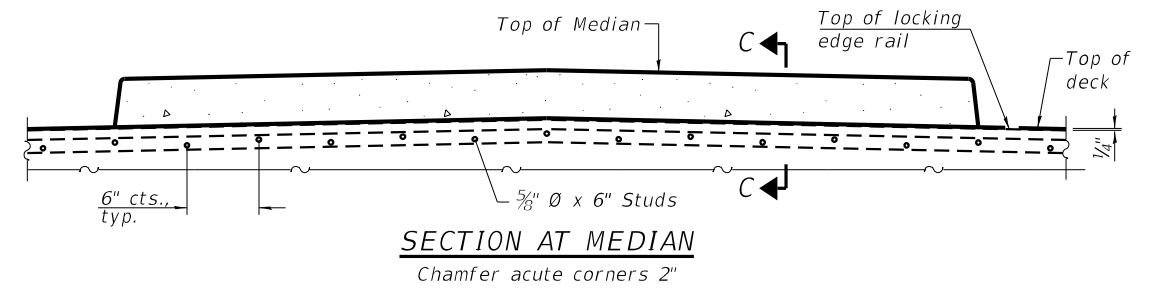
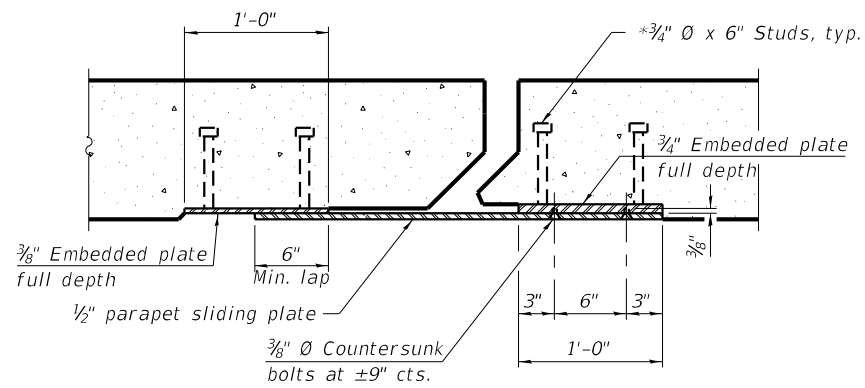
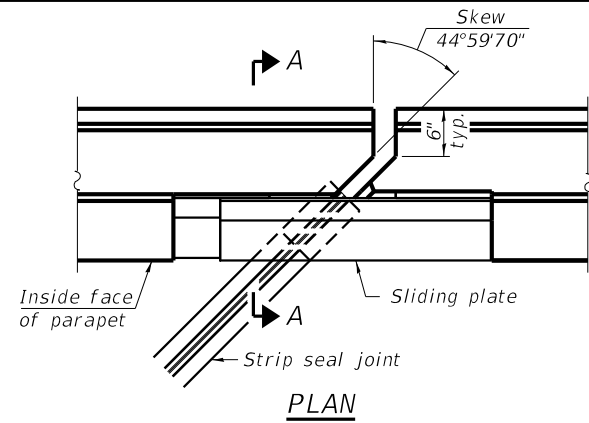
USER NAME = frank	DESIGNED - SM	REVISED -
PLOT SCALE = 2.0000' / 1"	DRAWN - FDL	REVISED -
PLOT DATE = 1/20/2023	CHECKED - DCB	REVISED -
	DATE - 1/20/2023	REVISED -

STATE OF ILLINOIS
DEPARTMENT OF TRANSPORTATION

JOINT REPLACEMENT DETAILS - 3 OF 3
STRUCTURE NO. 081-0125

STRUCTURAL SHEET 6 OF 11 SHEETS

F.A.I. RTE.	SECTION	COUNTY	TOTAL SHEETS	SHEET NO.
88	(161-1TB-4)BJR	ROCK ISLAND	25	17
	WHA# 1054D22		CONTRACT NO. 64S24	
C-92-031-23	ILLINOIS			



Notes:

The strip seal shall be made continuous and shall have a minimum thickness of 1/4". The configuration of the strip seal shall match the configuration of the locking edge rails. Open or "webbed" strip seal gland configurations are not permitted. The gland shall be sized for a maximum rated movement of 4 inches.

The locking edge rails depicted are configured for typical applications and are conceptual only. The actual configuration of the locking edge rails and matching strip seal may vary from manufacturer to manufacturer provided they fit the application and meet the minimum anchorage shown. Flanged edge rails, however, will not be allowed. Locking edge rails may exceed the 4 1/2" maximum depth provided the anchorage system is revised according to the manufacturer's recommendation.

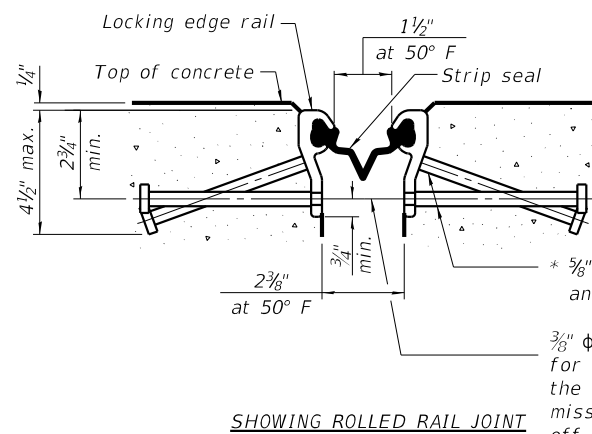
The manufacturer's recommended installation methods shall be followed.

All steel components shall be galvanized after fabrication according to Article 520.03 of the Standard Specifications.

The Maximum space between locking edge rail segments shall be 3/16" and sealed with a suitable sealant; however, any rail joint within 10' measured perpendicular to the face of the curb or parapet shall be welded as shown in the locking edge rail splice detail.

Cost of parapet sliding plates, embedded plates, and anchorage studs included with Preformed Joint Strip Seal.

The concrete opening below the strip seal will vary based on the locking edge rail chosen by the Contractor. Deck and parapet lengths shown elsewhere in the plans are dimensioned to the concrete opening, not the joint opening, and are based on the rolled locking edge rail. If the Contractor elects to use a different locking edge rail, dimensional adjustments may be required. One exception to this would be the strip seal joint at the end of the precast bridge approach slab. For these cases the pavement connector length shall be adjusted, not the length of the bridge approach slab.

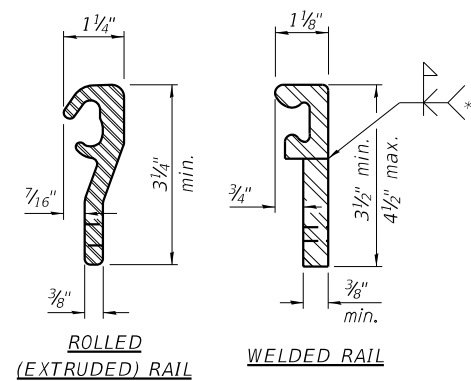
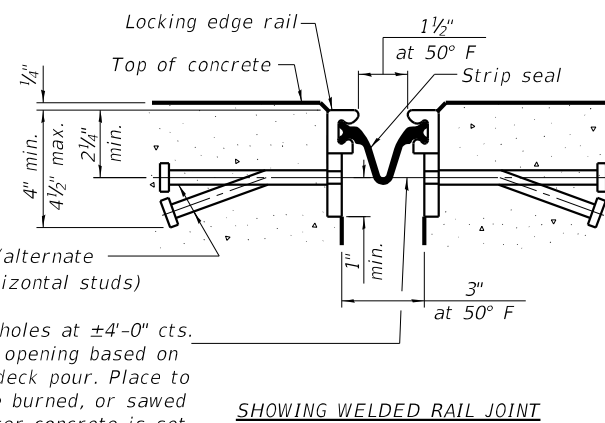


* 5/8" Ø x 6" studs @ 6" cts. (alternate angled/bent studs with horizontal studs)

3/8" φ threaded rods in 7/16" φ holes at ±4'-0" cts. for holding the proper joint opening based on the temperature during the deck pour. Place to miss studs. All rods shall be burned, or sawed off flush with the plates after concrete is set.

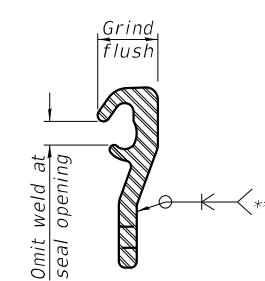
SECTION A-A

* Granular or solid flux filled headed studs conforming to Article 1006.32 of the Std. Specs., automatically end welded.



LOCKING EDGE RAILS

** Back gouge not required if complete joint penetration is verified by mock-up.



LOCKING EDGE RAIL SPLICE

The inside of the locking edge rail groove shall be free of weld residue. Rolled rail shown, welded rail similar.

BILL OF MATERIAL

Item	Unit	Total
Preformed Joint Strip Seal	Foot	187

FILE = S:\PROJECTS\2022\1054D22\1001202.DESIGN\CAD.SHEETS\04.SN.081-0125\1054D22.Modified Preformed Joint Strip Seal.dgn



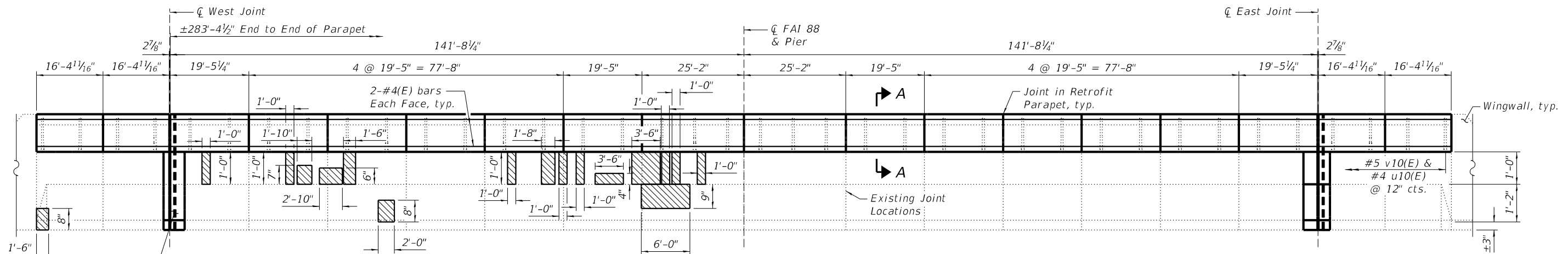
USER NAME	DESIGNED	REVISIONS
grog	SM	-
	FDL	-
	DCB	-
		-

STATE OF ILLINOIS
DEPARTMENT OF TRANSPORTATION

MODIFIED PREFORMED JOINT STRIP SEAL
STRUCTURE NO. 081-0125

STRUCTURAL SHEET 7 OF 11 SHEETS

F.A.I. RTE.	SECTION	COUNTY	TOTAL SHEETS	SHEET NO.
88	(161-1TB-4)BJR	ROCK ISLAND	25	18
	WHA# 1054D22			CONTRACT NO. 64S24
	C-92-031-23	ILLINOIS		

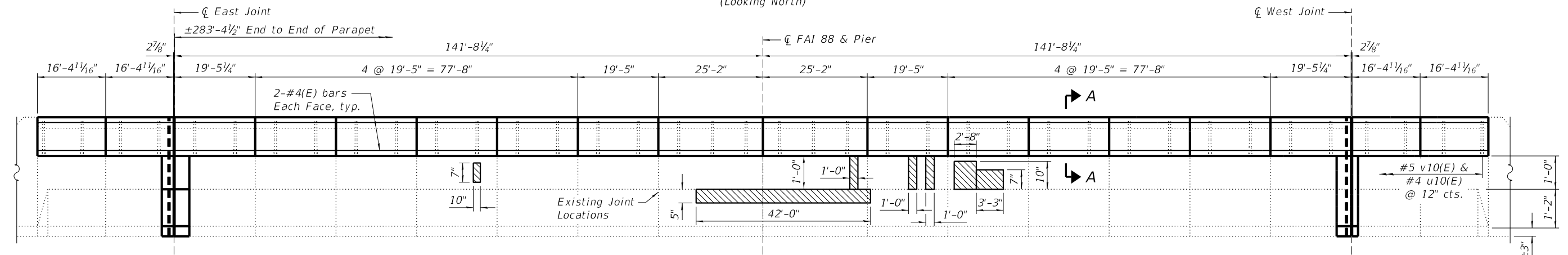


Portion of Parapet to be rebuilt with Expansion Joint Replacement, typ. (See structural sheets 4-7 of 11)

INSIDE ELEVATION OF NORTH PARAPET REPAIRS

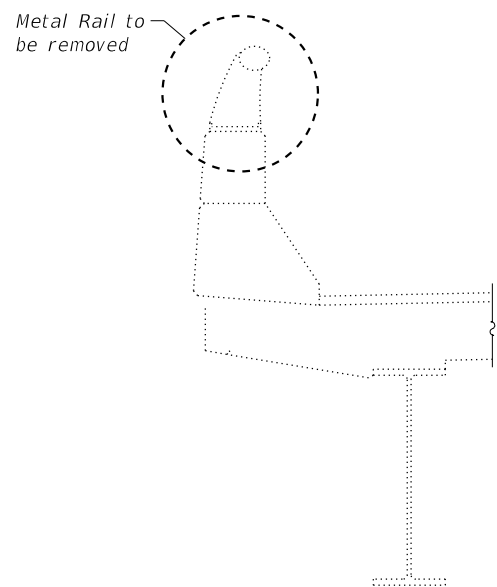
(Looking North)

LEGEND
 Structural Repair of Concrete (Depth Equal to or Less Than 5")

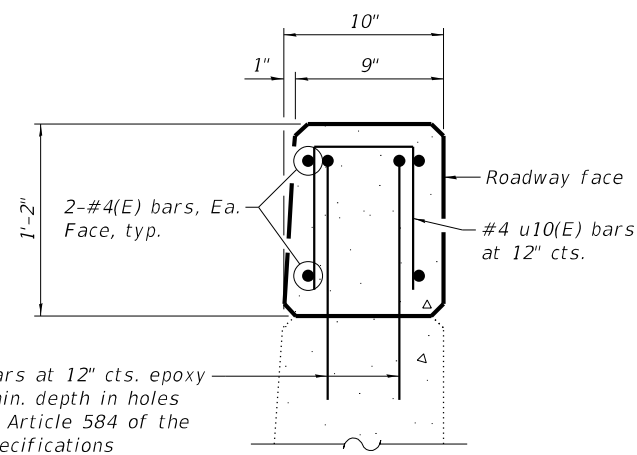


INSIDE ELEVATION OF SOUTH PARAPET REPAIRS

(Looking South)



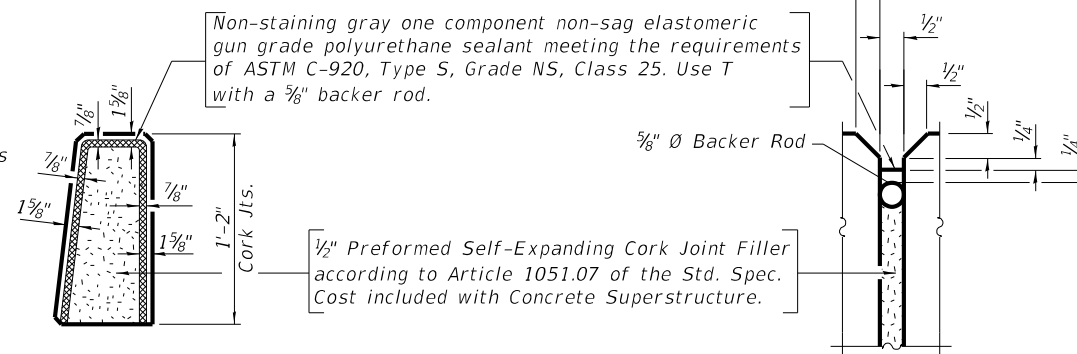
EXISTING BARRIER SECTION



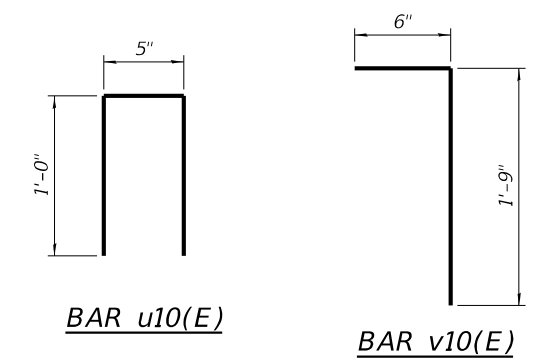
NOTES:

- All Concrete Removal Regions shall have a 3/4\"/>
- Class SI Concrete shall be used.
- All exposed edges shall be chamfered 3/4\"/>
- Cost of all materials, labor, and equipment to complete the work as detailed and as specified in the Special Provisions shall be included in the cost of "Retrofit Concrete Parapet".
- Epoxy grout v10(E) bars in 7/8\"/>
- The existing railings shall be removed and disposed of according to Article 501.05 of the Standard Specifications. Cost included with "Retrofit Concrete Parapet".
- Quantity for Structural Repair of Concrete (Depth Equal to or Less Than 5") is estimated. Areas to be repaired shall be determined in the field by the Engineer.
- If the anchorage section of the approach guardrail conflicts with the barrier improvements, it shall be removed during rail removal and replaced after the barrier concrete has cured. Cost included with "Retrofit Concrete Parapet".

SECTION A-A



PARAPET JOINT DETAILS



BILL OF MATERIAL

Item	Unit	Quantity
Protective Coat	Sq. Yd.	146
Retrofit Concrete Parapet	Foot	699
Structural Repair of Concrete (Depth Equal to or Less Than 5")	Sq. Ft.	51

FILE = S:\PROJECTS\2022\1054D22\1054D22.DESIGN\CAD SHEETS\NO 4\SN 081-0125\1054D22.Parapet Repair Details.dgn



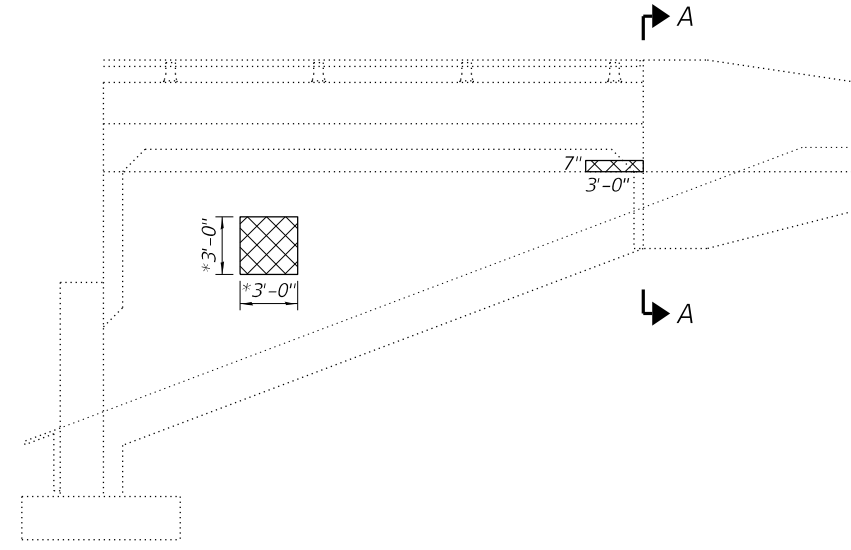
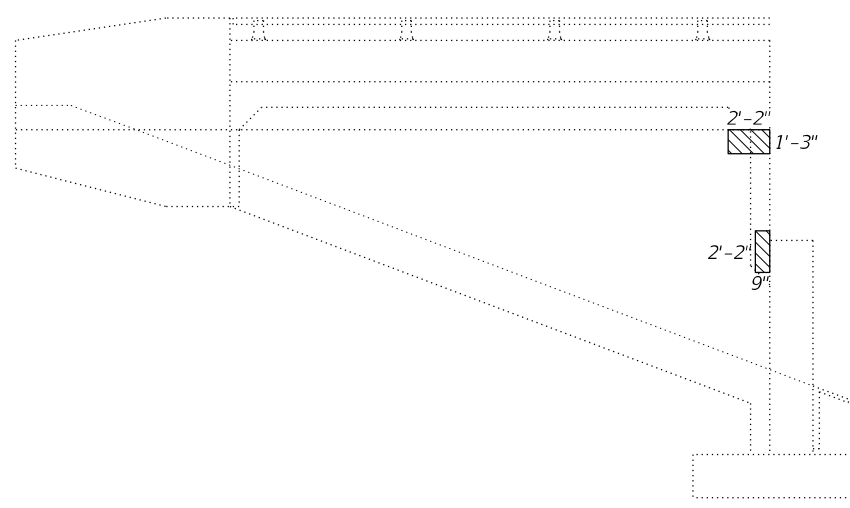
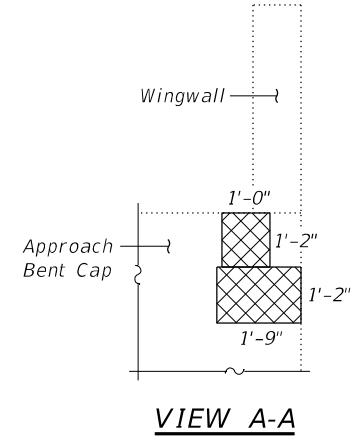
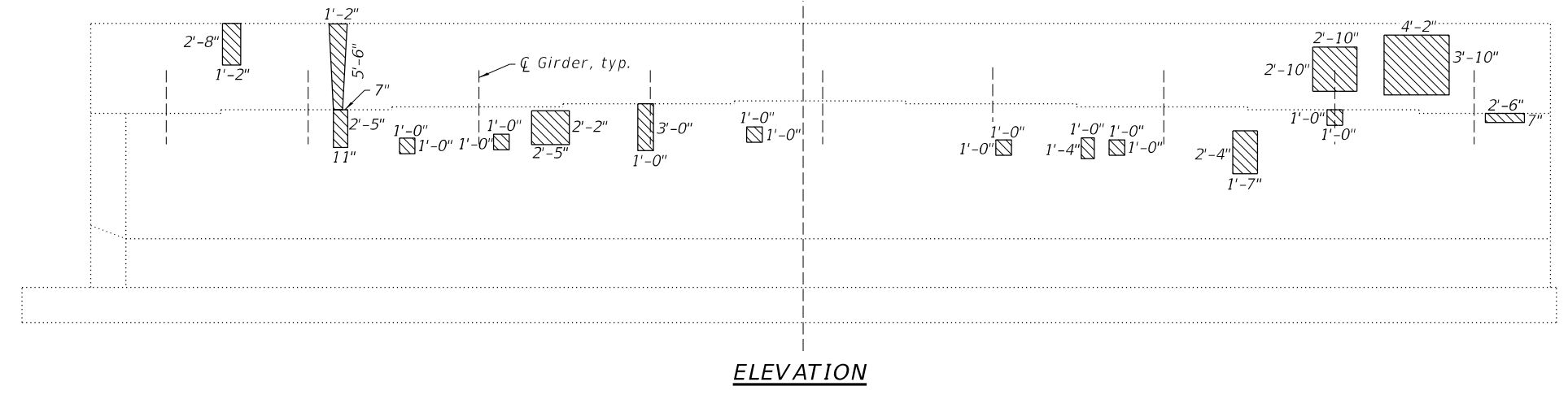
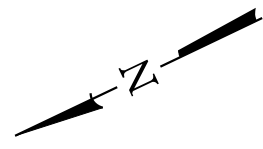
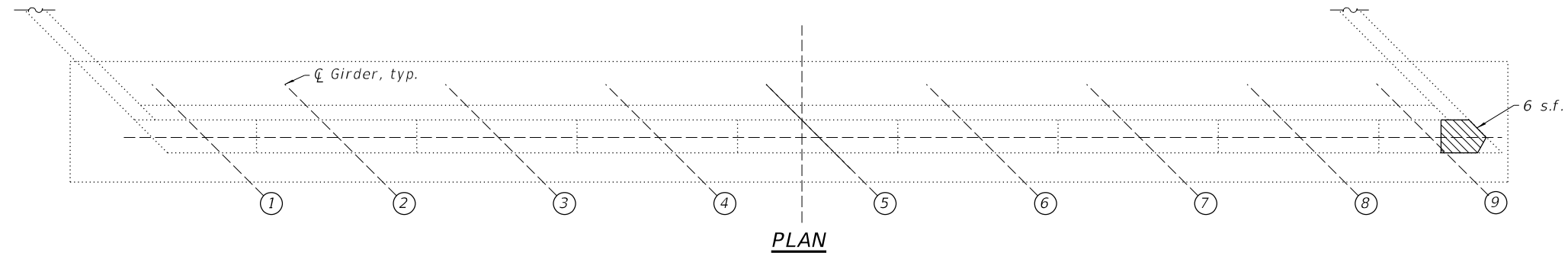
USER NAME = frank	DESIGNED - SM	REVISED -
PLOT SCALE = 2.0000' / 1"	DRAWN - FDL	REVISED -
PLOT DATE = 1/23/2023	CHECKED - DCB	REVISED -
	DATE - 1/23/2023	REVISED -

**STATE OF ILLINOIS
DEPARTMENT OF TRANSPORTATION**

**PARAPET REPAIR DETAILS
STRUCTURE NO. 081-0125**

STRUCTURAL SHEET 8 OF 11 SHEETS

F.A.I. RTE. 88	SECTION (161-1HB-4)BJR	COUNTY ROCK ISLAND	TOTAL SHEETS 25	SHEET NO. 19
WHA# 1054D22		CONTRACT NO. 64S24		
C-92-031-23	ILLINOIS			



- LEGEND**
- Structural Repair of Concrete (Depth equal to or less than 5 inches)
 - Structural Repair of Concrete (Depth greater than 5 inches)

BILL OF MATERIAL

ITEM	UNIT	TOTAL
Structural Repair of Concrete (Depth Equal to or Less than 5 Inches)	Sq. Ft.	66
Structural Repair of Concrete (Depth Greater than 5 Inches)	Sq. Ft.	14

* Added for contingency

FILE = S:\PROJECTS\2022\1054D22\1054D22.DESIGN\CAD.SHEETS\NO. 4\SN. 081-0125\1054D22.East Abutment Repair Details.dgn



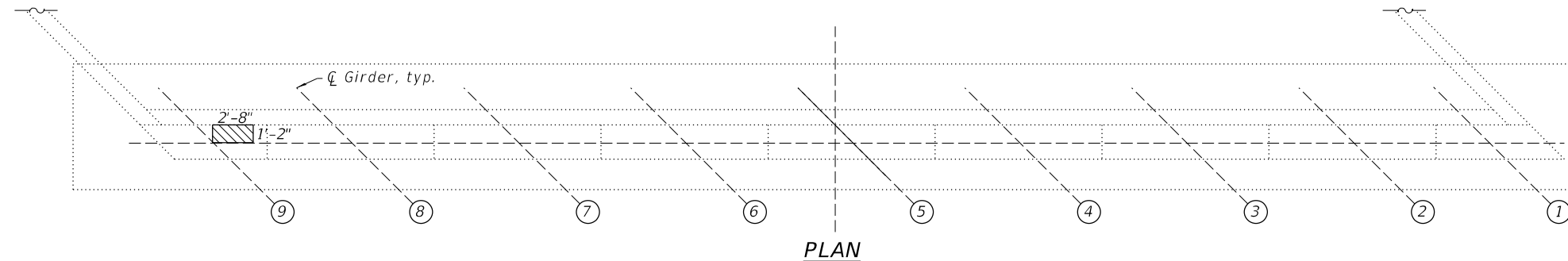
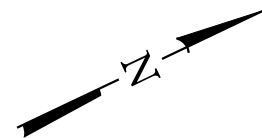
USER NAME = greg	DESIGNED - SM	REVISED -
PLOT SCALE = 2.0000' / 1"	DRAWN - FDL	REVISED -
PLOT DATE = 12/1/2022	CHECKED - DCB	REVISED -
	DATE - 12/1/2022	REVISED -

**STATE OF ILLINOIS
DEPARTMENT OF TRANSPORTATION**

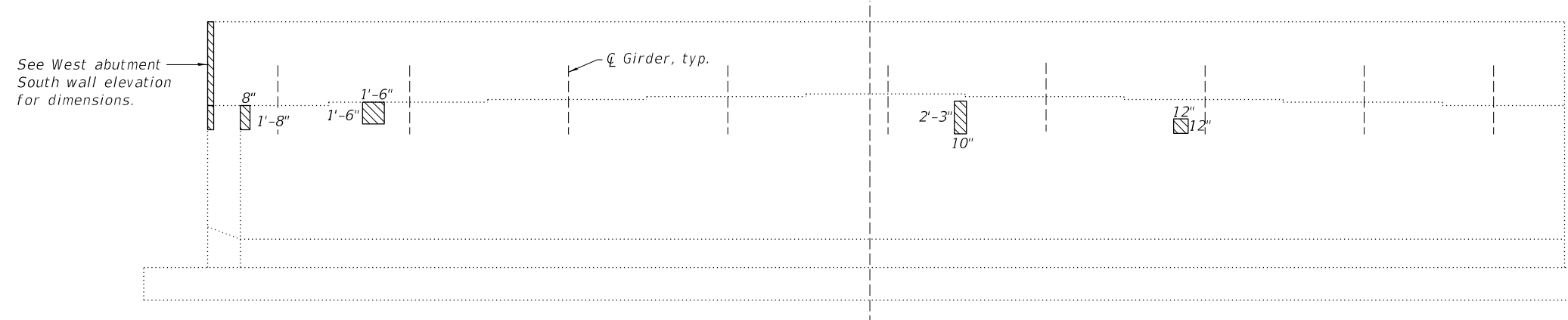
**EAST ABUTMENT REPAIR DETAILS
STRUCTURE NO. 081-0125**

STRUCTURAL SHEET 9 OF 11 SHEETS

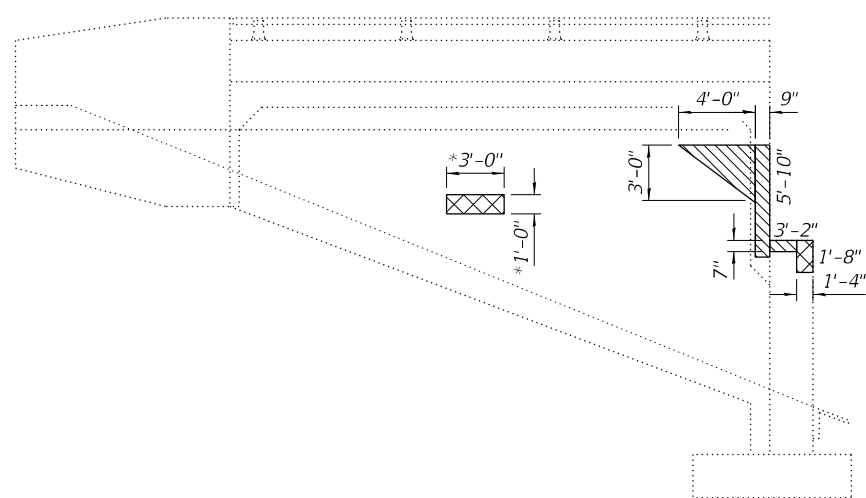
F.A.I. RTE.	SECTION	COUNTY	TOTAL SHEETS	SHEET NO.
88	(161-1HB-4)BJR	ROCK ISLAND	25	20
WHA# 1054D22		CONTRACT NO. 64S24		
C-92-031-23	ILLINOIS			



PLAN



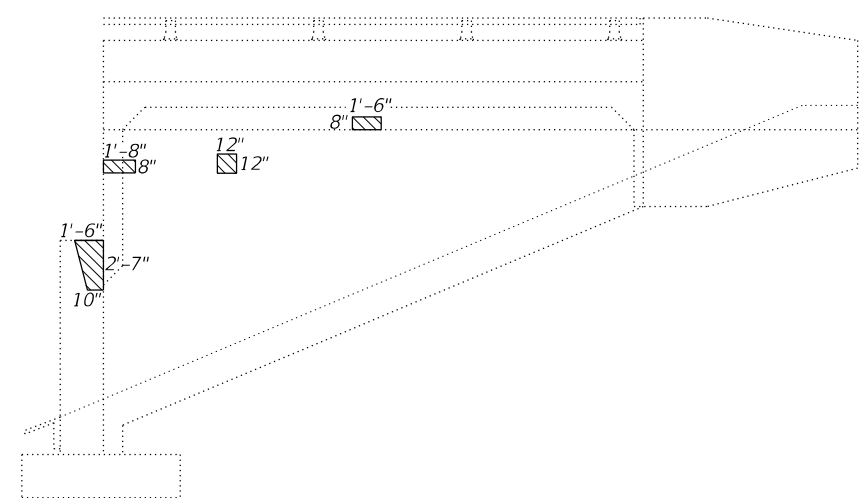
ELEVATION



WEST ABUTMENT SOUTH WALL ELEVATION

(Looking North)
(All dimension are along skew)

* Added for contingency



WEST ABUTMENT NORTH WALL ELEVATION

(Looking South)
(All dimension are along skew)

LEGEND

- Structural Repair of Concrete (Depth equal to or less than 5 inches)
- Structural Repair of Concrete (Depth greater than 5 inches)

BILL OF MATERIAL

ITEM	UNIT	TOTAL
Structural Repair of Concrete (Depth Equal to or Less than 5 Inches)	Sq. Ft.	27
Structural Repair of Concrete (Depth Greater than 5 Inches)	Sq. Ft.	6

FILE = S:\PROJECTS\2022\1054D22\10012022\DESIGN\CAD\SHEETS\NO 4\SN 081-0125\1054D22.West Abutment Repair Details.dgn

WILLET HOFMANN & ASSOCIATES INC.
ENGINEERING ARCHITECTURE LAND SURVEYING
809 EAST 2ND STREET, DIXON, IL 61021-0367
T: 815-284-3381 DESIGN FIRM: #184-00918

USER NAME = greg	DESIGNED - SM	REVISED -
PLOT SCALE = 2.0000' / 1"	DRAWN - FDL	REVISED -
PLOT DATE = 12/1/2022	CHECKED - DCB	REVISED -
	DATE - 12/1/2022	REVISED -

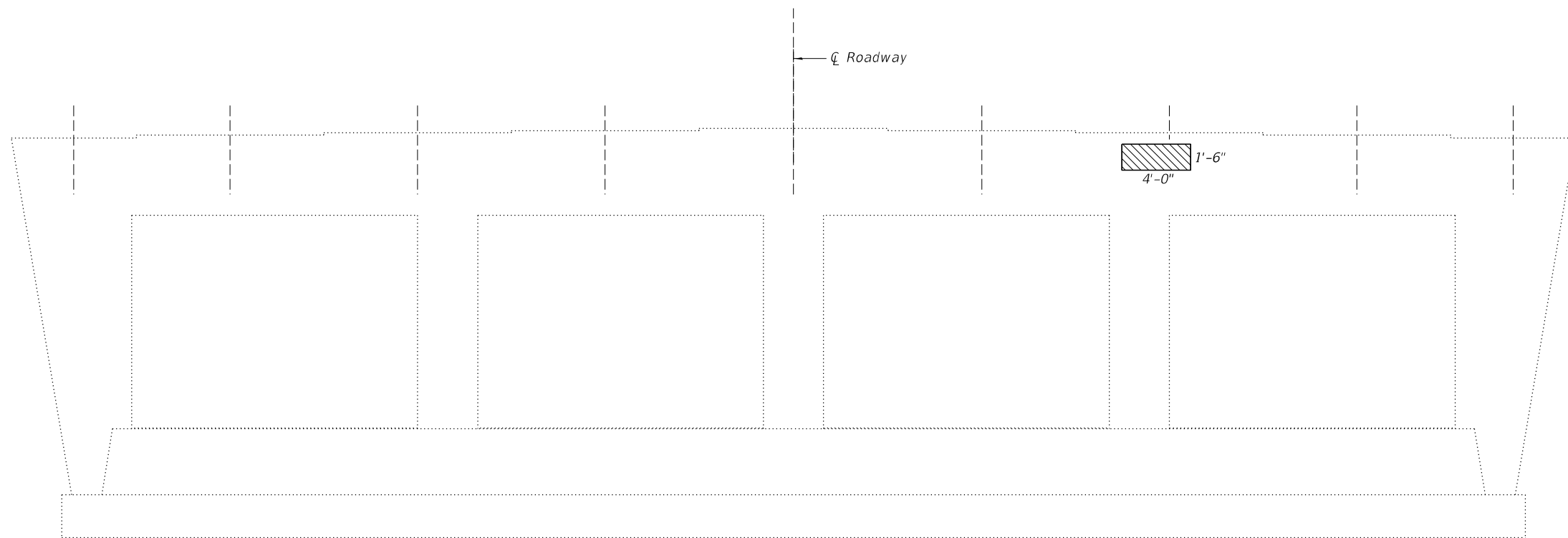
**STATE OF ILLINOIS
DEPARTMENT OF TRANSPORTATION**

**WEST ABUTMENT REPAIR DETAILS
STRUCTURE NO. 081-0125**

STRUCTURAL SHEET 10 OF 11 SHEETS

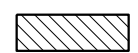
F.A.I. RTE.	SECTION	COUNTY	TOTAL SHEETS	SHEET NO.
88	(161-1HB-4)BJR	ROCK ISLAND	25	21
WHA# 1054D22		CONTRACT NO. 64S24		
C-92-031-23	ILLINOIS			

FILE = S:\PROJECTS\2022\1054D22.IDOT\2022.DESIGN\CAD.SHEETS\NO 4\SN 081-0125\1054D22.Pier.Repair.Details.dgn



WEST FACE ELEVATION
(Looking East)

LEGEND

 Structural Repair of Concrete
(Depth equal to or less than 5 inches)

BILL OF MATERIAL

ITEM	UNIT	QUANTITY
Structural Repair of Concrete (Depth Equal to or Less than 5 Inches)	Sq. Ft.	6



USER NAME = greg	DESIGNED - SM	REVISED -
	DRAWN - FDL	REVISED -
PLOT SCALE = 2.0000' / 1" =	CHECKED - DCB	REVISED -
PLOT DATE = 12/1/2022	DATE - 12/1/2022	REVISED -

**STATE OF ILLINOIS
DEPARTMENT OF TRANSPORTATION**

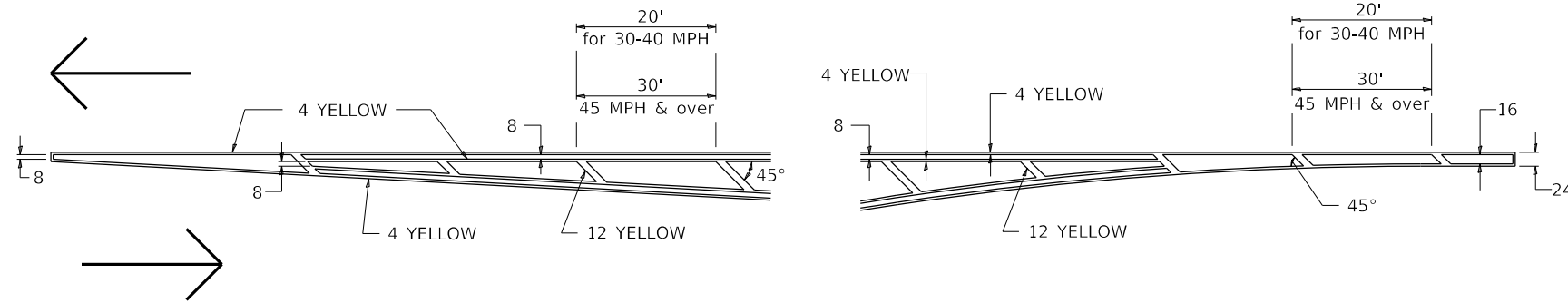
**PIER REPAIR DETAILS
STRUCTURE NO. 081-0125**

STRUCTURAL SHEET 11 OF 11 SHEETS

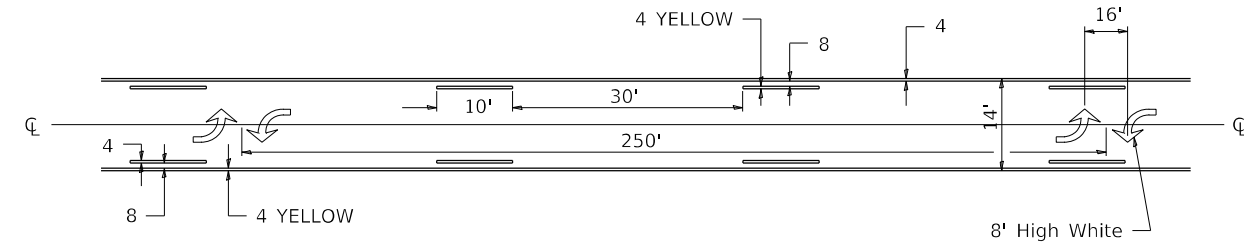
F.A.I. RTE.	SECTION	COUNTY	TOTAL SHEETS	SHEET NO.
88	(161-1HB-4)BJR	ROCK ISLAND	25	22
WHA# 1054D22		CONTRACT NO. 64S24		
C-92-031-23	ILLINOIS			

TYPICAL PAVEMENT MARKINGS

TYPICAL PAVEMENT MARKING FOR FLUSH MEDIAN AT LEFT TURN LANE

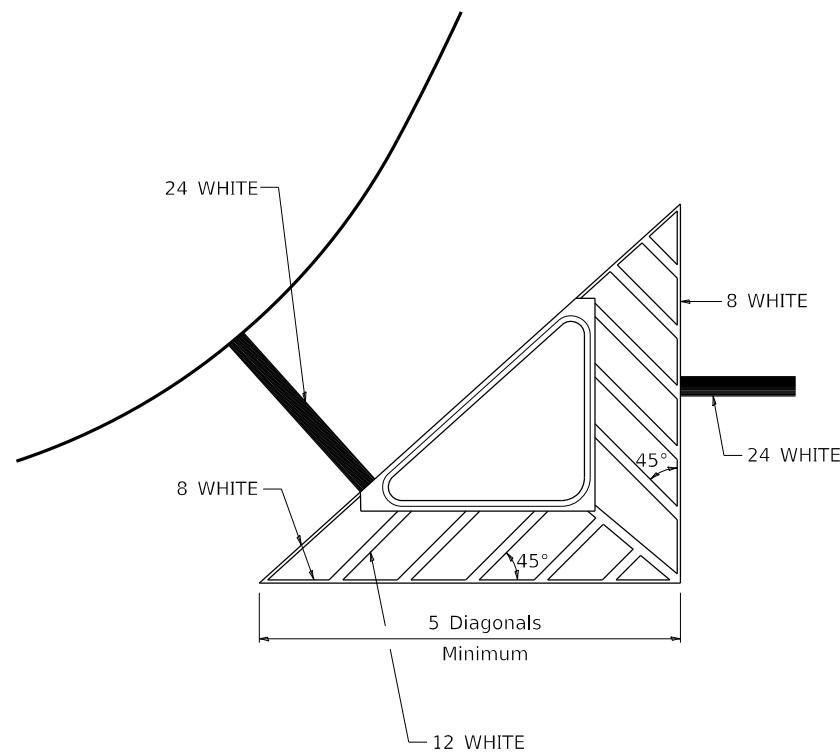


MEDIAN PAVEMENT MARKING



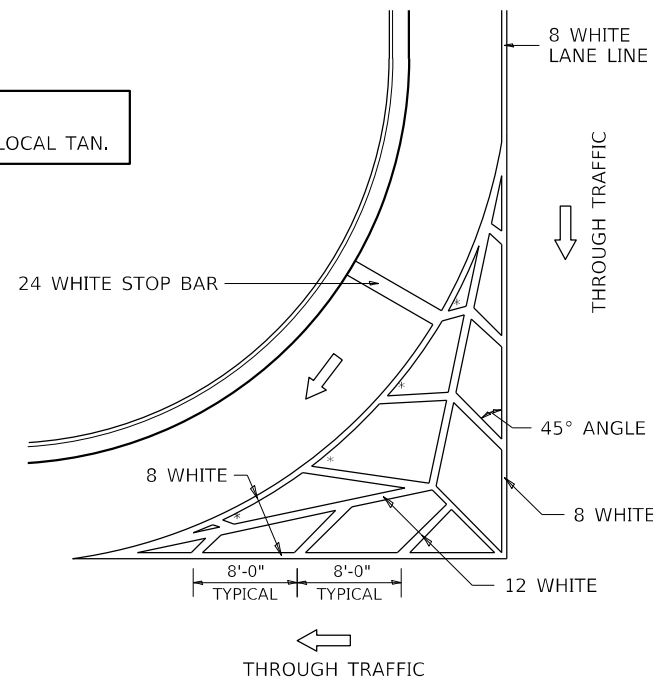
** ALL DIMENSIONS ARE IN INCHES UNLESS OTHERWISE NOTED.

TYPICAL ISLAND OFFSET SHOULDER WIDTH



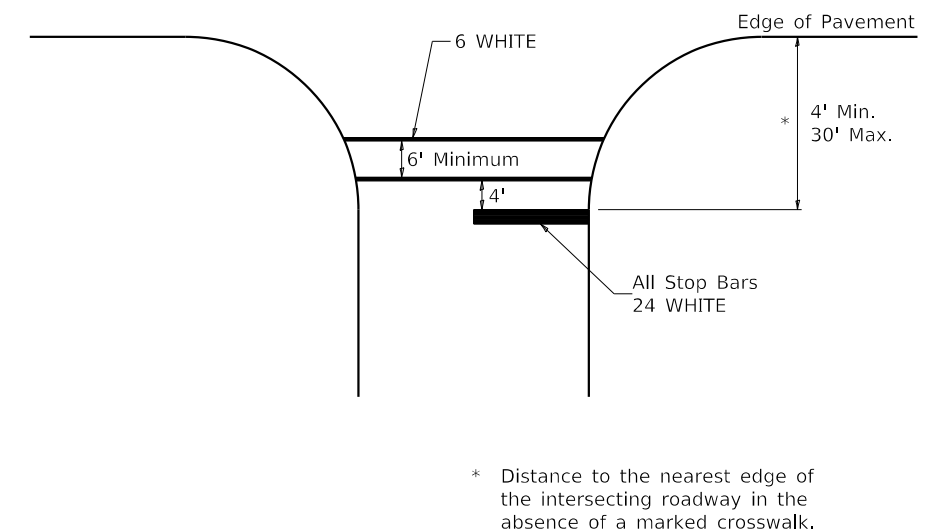
TYPICAL MARKING FOR PAINTED ISLANDS

NOTE:
* 45° TO LOCAL TAN.



STANDARD CROSSWALK MARKING

See Schedules for Locations



* Distance to the nearest edge of the intersecting roadway in the absence of a marked crosswalk.

FILE = S:\PROJECTS\2022\1054D22.IDOT\2022.DESIGN\CAD.SHEETS\NO.4\SN.081-0125\1054D22.Standard.Details.dgn



USER NAME = greg	DESIGNED - GBG	REVISED -
PLOT SCALE = 2.0000' / 1" = 1/8"	DRAWN - GBG	REVISED -
PLOT DATE = 12/1/2022	CHECKED - GFS	REVISED -
	DATE - 12/1/2022	REVISED -

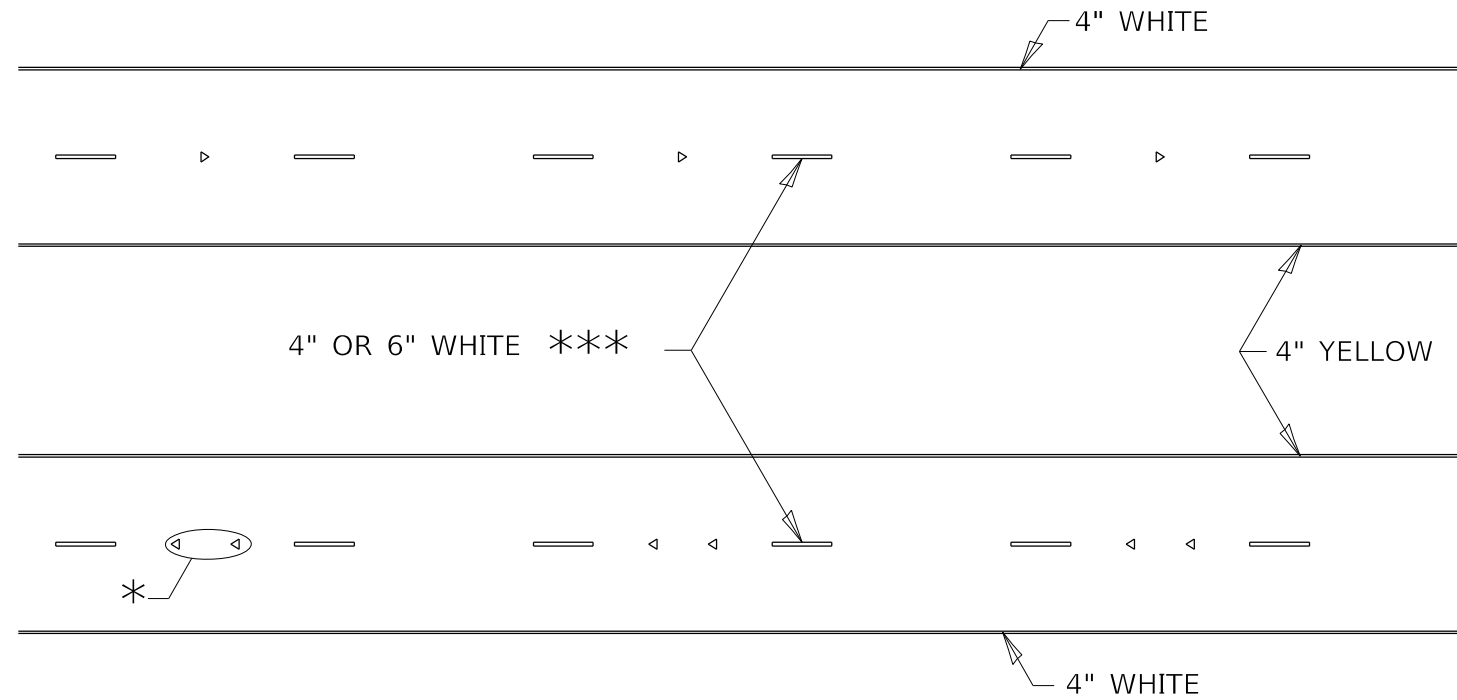
STATE OF ILLINOIS
DEPARTMENT OF TRANSPORTATION

DISTRICT 2 STANDARD DETAILS
STRUCTURE NO. 081-0125

SHEET 1 OF 3 SHEETS

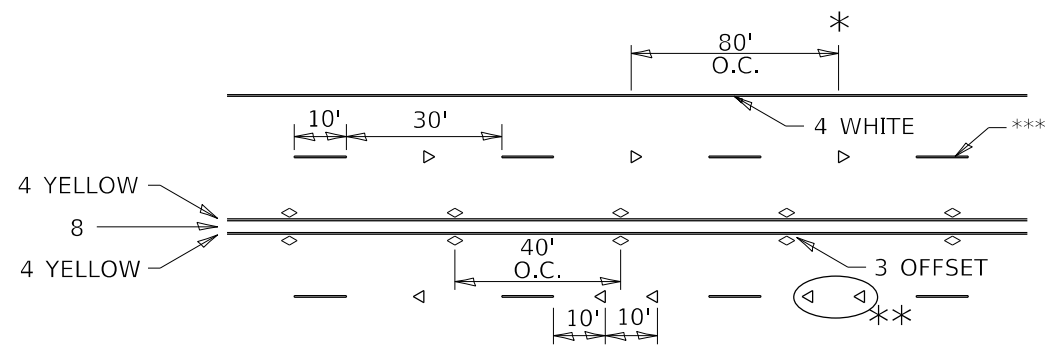
F.A.I. RTE. 88	SECTION (161-1HB-4)BJR	COUNTY ROCK ISLAND	TOTAL SHEETS 25	SHEET NO. 23
WHA# 1054D22		CONTRACT NO. 64S24		
C-92-031-23	ILLINOIS			

TYPICAL PAVEMENT MARKINGS



* SEE HIGHWAY STANDARD 781001 FOR SPACING DETAILS.
USE DOUBLE MARKERS WHEN ADT ≥ 20,000.

MULTI-LANE / DIVIDED



* REDUCE TO 40' O.C. ON CURVES WHERE ADVISORY SPEEDS ARE 10 MPH LOWER THAN POSTED SPEEDS.

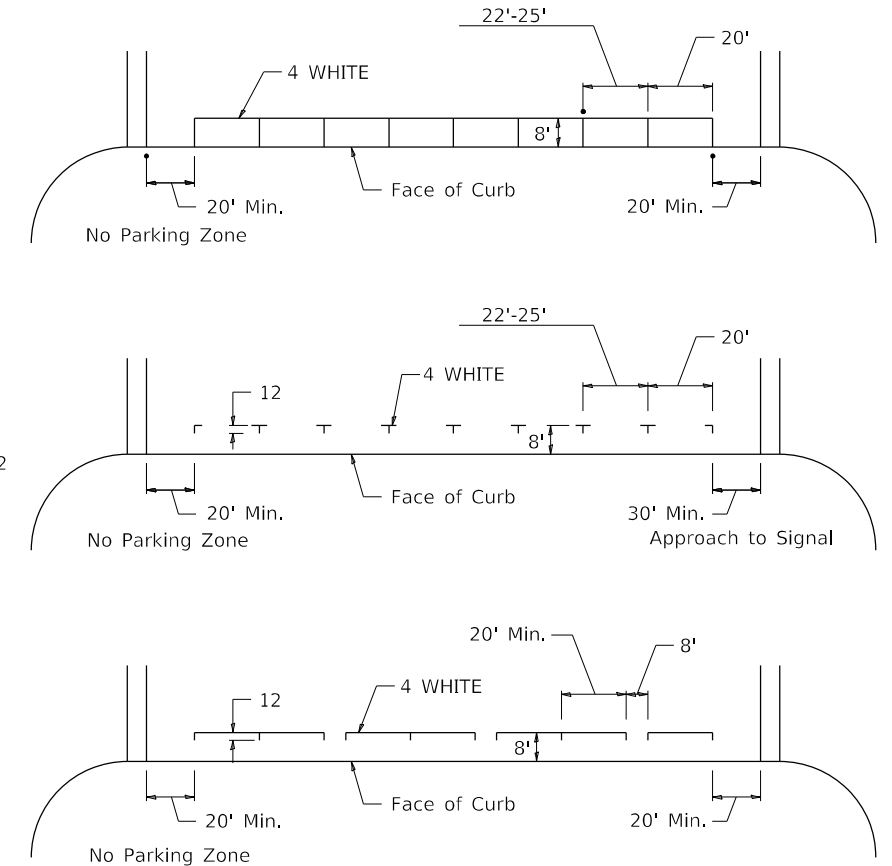
** USE DOUBLE MARKERS WHEN ADT ≥ 20,000

*** CENTERLINE SKIP DASH PAVEMENT MARKING SPEED LIMIT LESS THAN 40 MPH USE 4" LINE. SPEED LIMIT 40 MPH AND OVER USE 6" LINE.

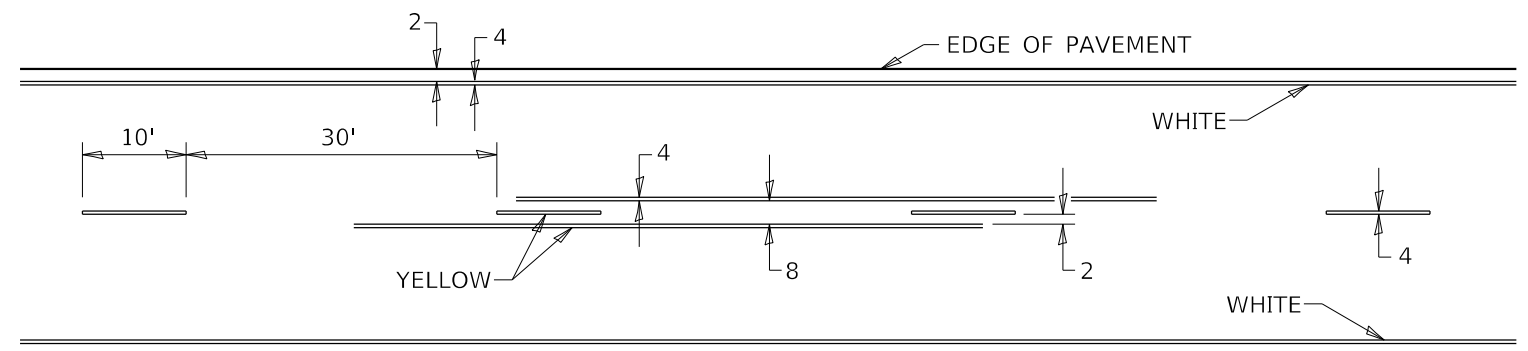
MULTI-LANE / UNDIVIDED & ONE WAY

(FOR MULTI-LANE UNDIVIDED HIGHWAYS USE THIS DETAIL NOT HIGHWAY STANDARD 781001)

TYPICAL PARKING SPACING



TYPICAL PAVEMENT MARKING FOR TWO LANE SECTION - NO PASSING ZONES



SYMBOLS

FILE = S:\PROJECTS\2022\1054D22.DESIGN\CAD_SHEETS\NO 4.SN 081-0125\1054D22_Standard_Details.dgn



USER NAME = greg	DESIGNED - GBG	REVISED -
	DRAWN - GBG	REVISED -
PLOT SCALE = 2.0000' / 1"	CHECKED - GFS	REVISED -
PLOT DATE = 12/1/2022	DATE - 12/1/2022	REVISED -

STATE OF ILLINOIS
DEPARTMENT OF TRANSPORTATION

DISTRICT 2 STANDARD DETAILS
STRUCTURE NO. 081-0125

SHEET 3 OF 3 SHEETS

F.A.I. RTE.	SECTION	COUNTY	TOTAL SHEETS	SHEET NO.
88	(161-1HB-4)BJR	ROCK ISLAND	25	25
WHA# 1054D22		CONTRACT NO. 64S24		
C-92-031-23	ILLINOIS			